

179th Street Corridor Access Management and Circulation Plan and NE 179th St. & NE 29th Ave. Intersection Improvement

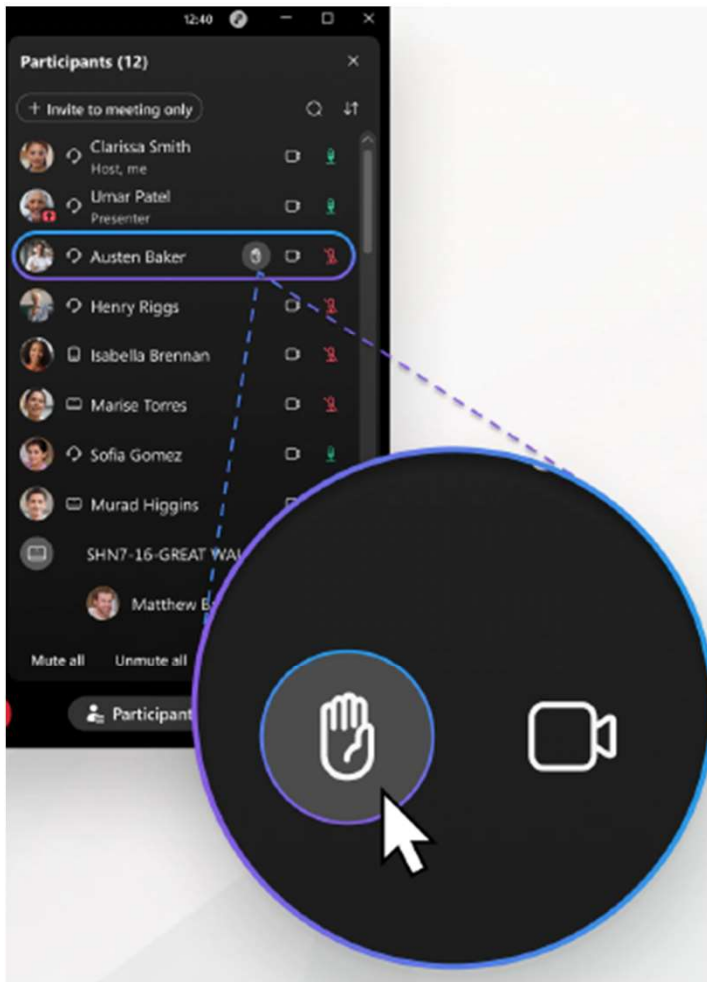
Public Works Virtual Open House

January 27, 2022


The meeting starts at 5:00 p.m. and concludes at 6:00 p.m.



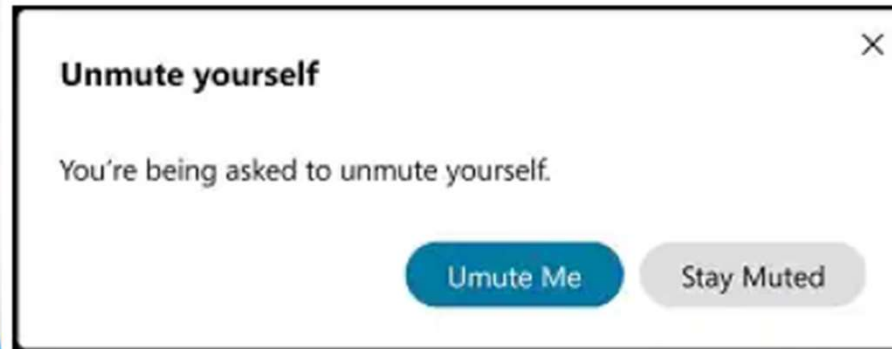
Questions



During a meeting, click  **Raise Hand**.

A raised hand  appears next to your name in the participants list.

If the host allows you to speak, you're prompted to unmute yourself.



To lower your hand, click **Lower Hand**.

If your meeting has [reactions](#), you can also raise and lower your hand from the **Reactions** menu, or use gesture recognition.



Introductions

- Meeting Moderator – Cindy Gonzalez
- Clark County Communication Manager – Kaley McLachlan-Burton
- Clark County Project Manager – Scott Sawyer
- Clark County Planning – Matt Herman
- Clark County Construction Manager – Isaac McConnell
- Clark County Real Property Services Section Manager – Laura Slye
- Otak Project Manager – Doug Sarkkinen
- DKS Team member – Randy Johnson
- Otak Team Member – David Haynes



179th Street Access Management and Circulation Plan Agenda

- **Introductions**
- **Project Purpose and Need**
- **Planning Study Area**
- **Useful Weblinks**
- **History**
- **Existing Conditions**
- **Planned Improvements**
- **Proposed Plan**
- **Next Steps**
- **Questions**

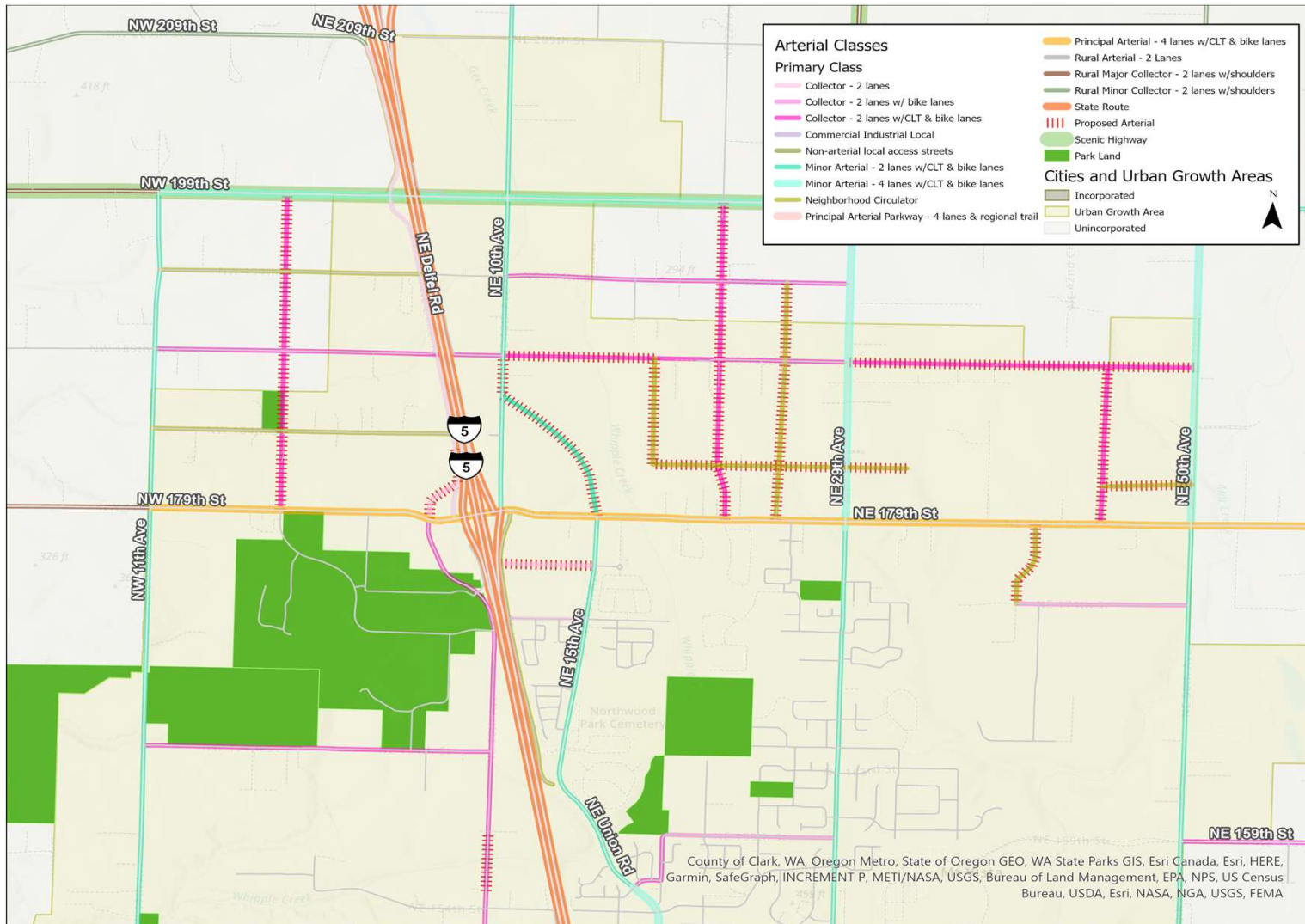


Project Purpose and Need

- The purpose of this analysis is to provide a cohesive circulation and access management plan for the study corridor to guide future infrastructure improvements including access locations, intersection control and facility cross-section elements.
- The current topography of 179th Street contains significant hills and valleys.
- Improving 179th Street to a 4-lane street will require “cuts” and “fills”.
- Future access locations on/off 179th Street need to be considered for safety and mobility.



Planning Study Area



History

- **2007 Periodic Comprehensive Plan Update**
 - Vancouver Urban Growth Area Expansion
- **2009 Mill Creek Sub-Area Plan Adoption**
 - Arterial Atlas Amendment
 - Zoning Code Amendment
 - Comprehensive Plan Amendment
- **2015 Connecting Washington funding package**
 - I-5/179th Street Interchange Reconstruction receive funding
- **2020 Urban Holding Removal**
 - Ordinance 2020-02-02 allows urban level development to proceed on ~2,200 acres.
- **2020 Pedestrian Accessway Code Adoption**
 - Ordinance 2020-12-02 approved requirement for providing pedestrian accessways on major streets

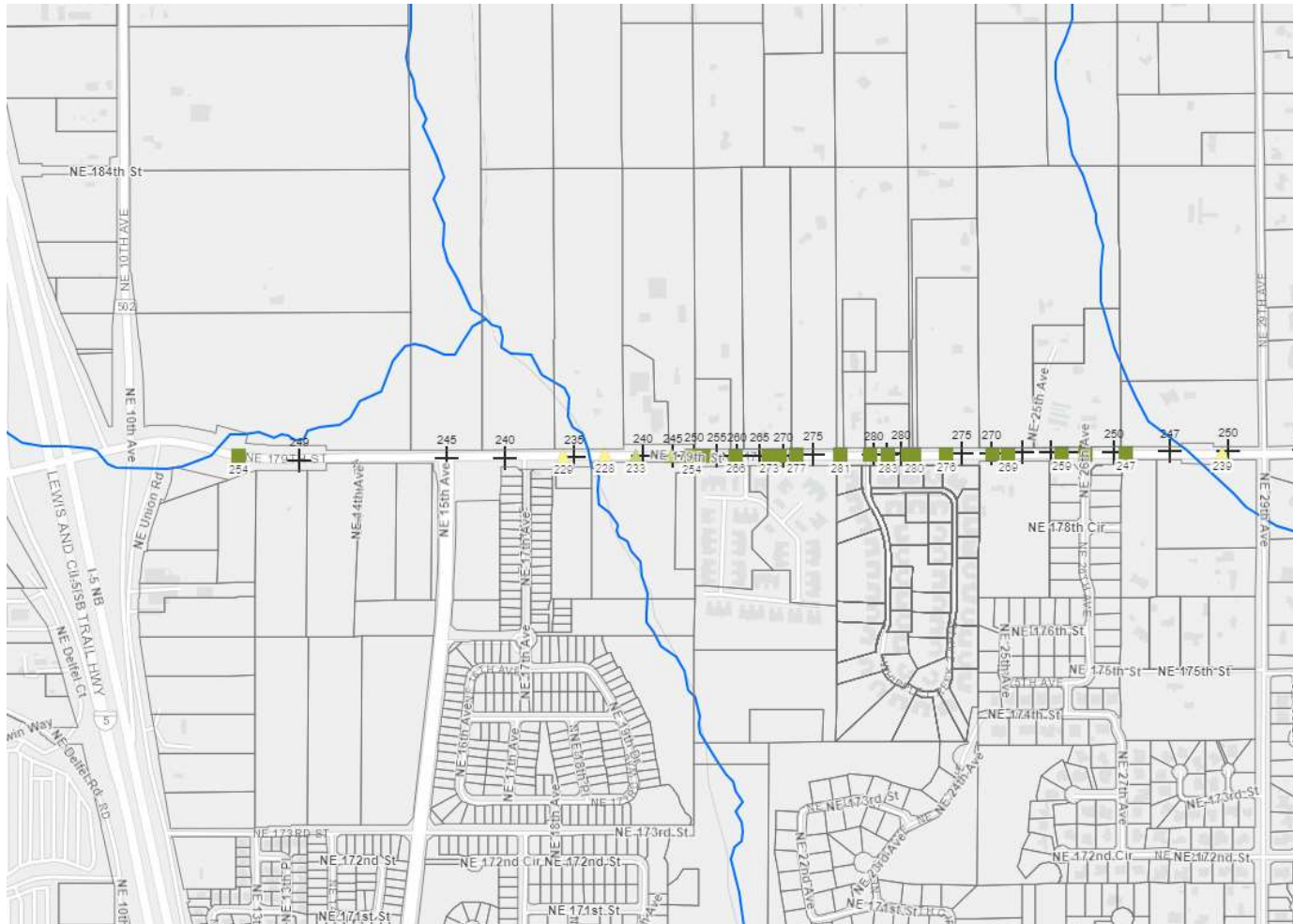


Existing Intersection Control

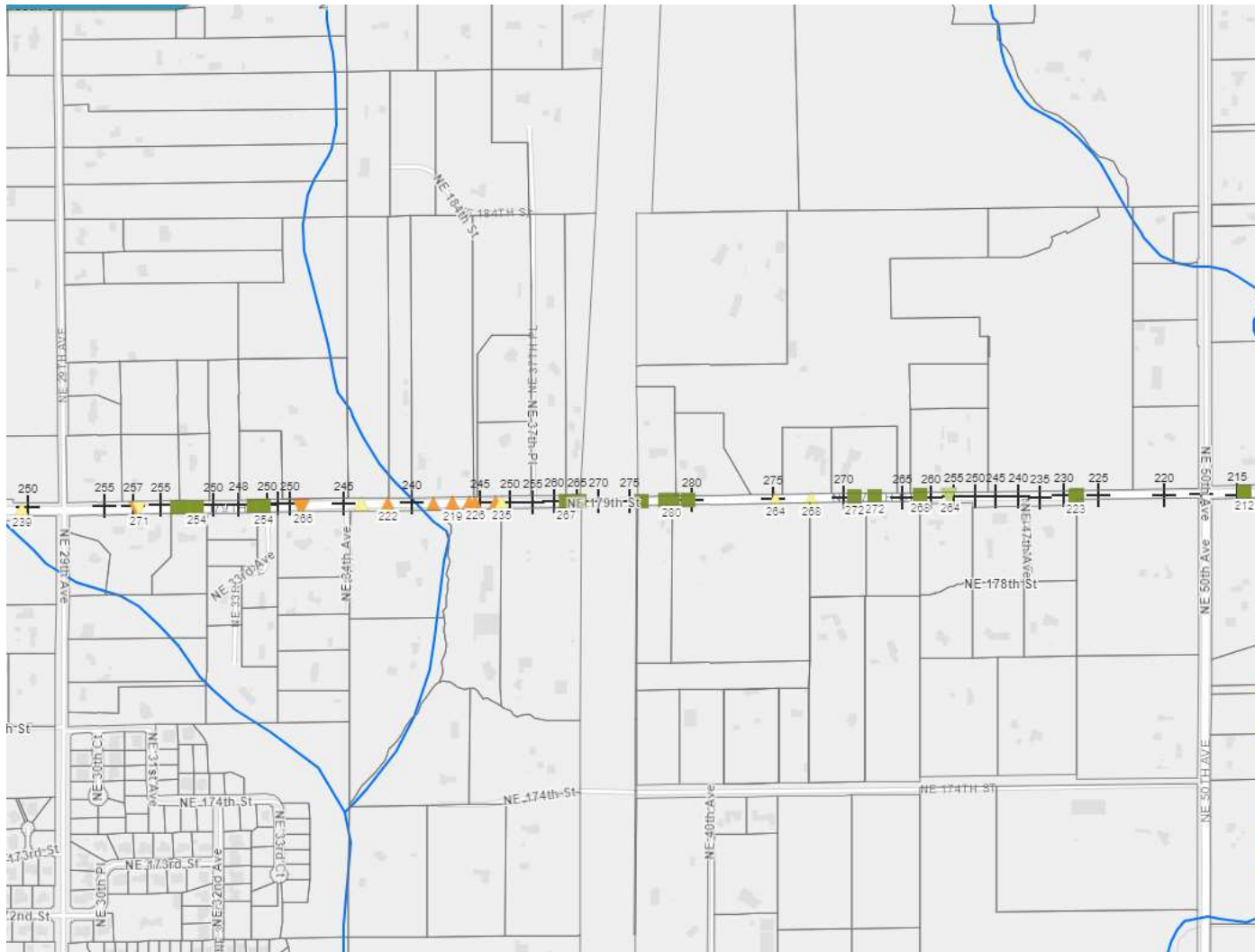
MAJOR STREET	MINOR STREET	INTERSECTION CONTROL TYPE
NW 179 TH STREET	NW 11 th Avenue	2-way stop control (NB and SB)
	NE 10 th Avenue South	1-way stop control (NB)
	NE 2 nd Avenue	1-way stop control (NB)
NE 179 TH STREET	NE Delfel Road South	Signalized
	NE Delfel Road North	1-way stop control (SB)
	I-5 SB On/Off Ramp	Signalized
	I-5 NB Off Ramp and NE 10 th Avenue	Signalized
	NE Union Road	1-way stop control (NB)
	NE 15 th Avenue	Signalized
	NE 26 th Avenue	1-way stop control (NB)
	NE 29 th Avenue	all-way stop control
	NE 50 th Avenue	all-way stop control



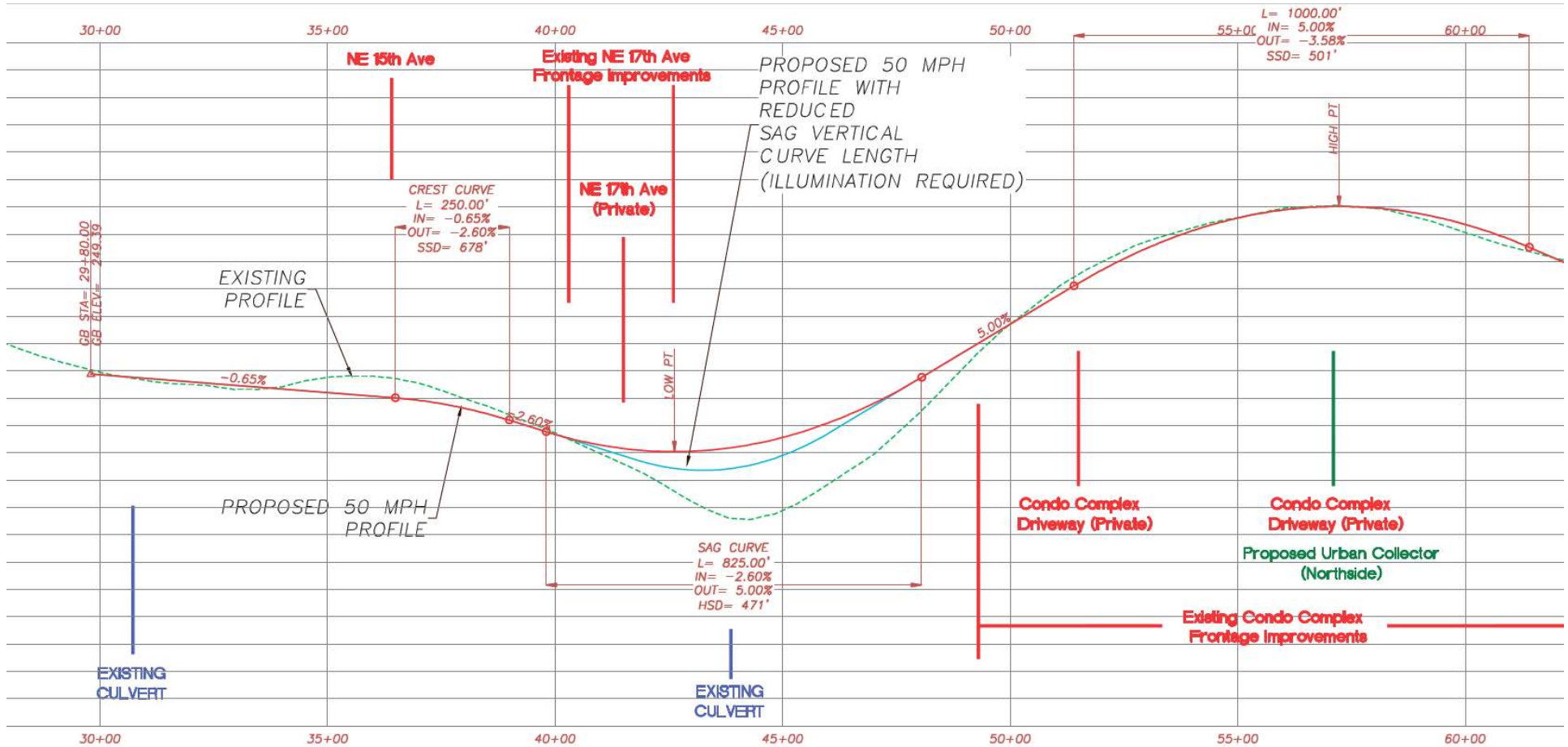
Existing Driveways – Northeast 179th Street (continued)



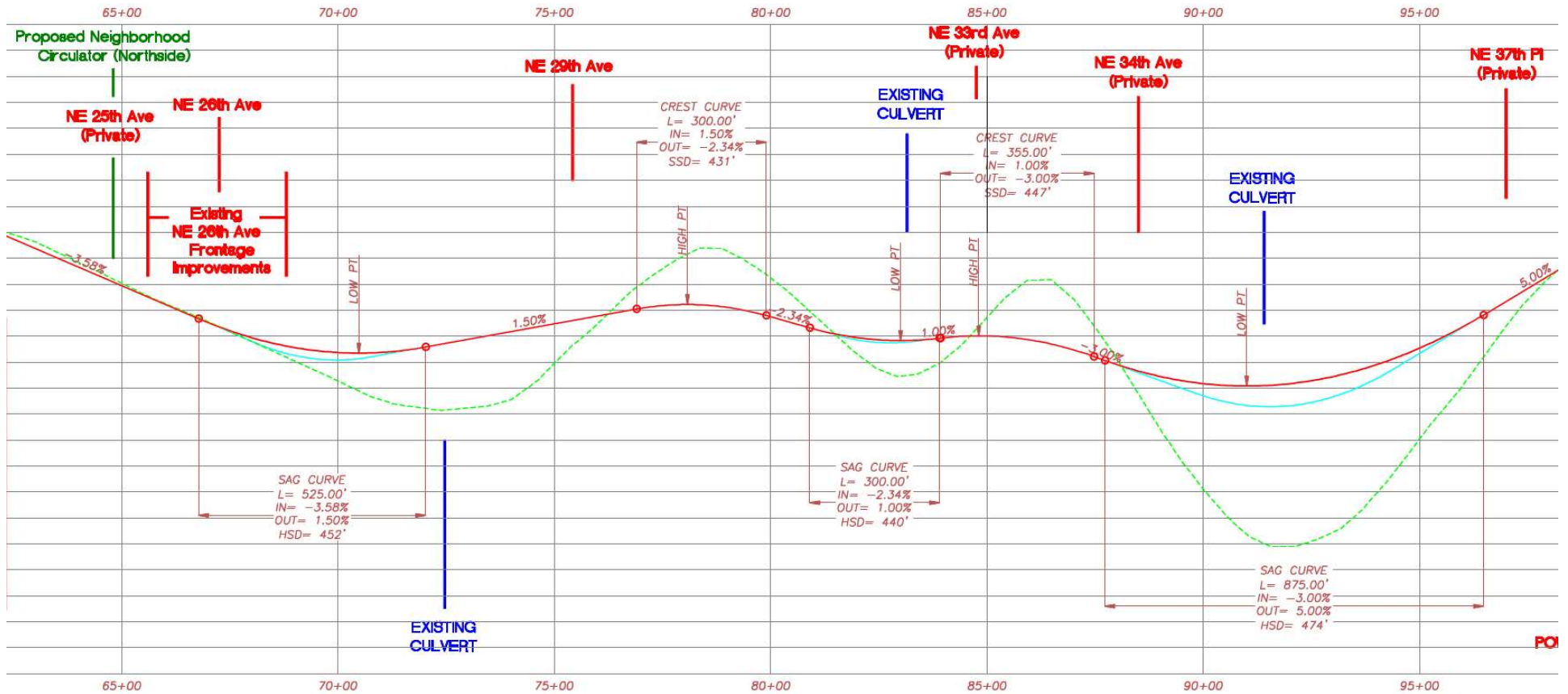
Existing Driveways – Northeast 179th Street



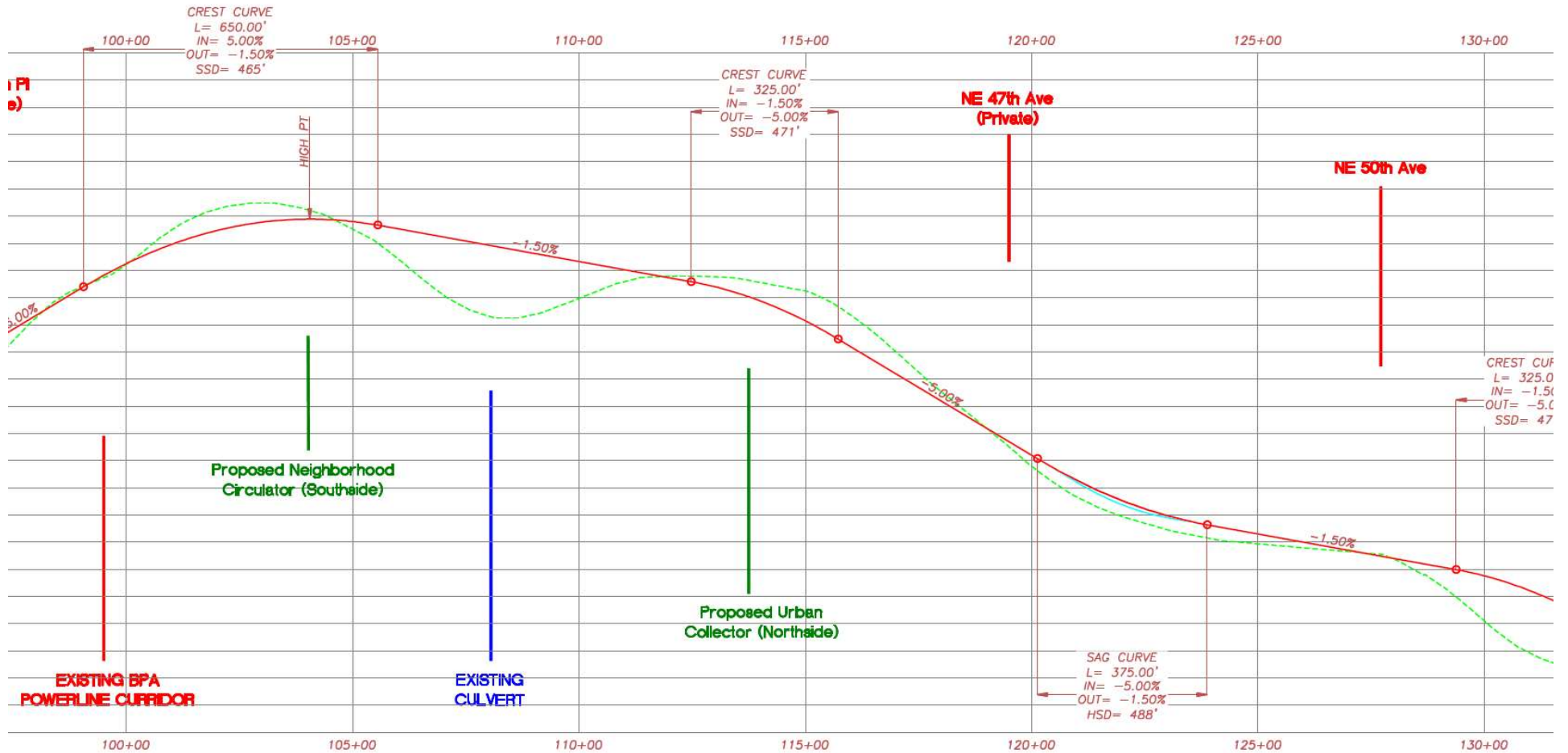
Topology – East (15th Avenue to 22nd Avenue)



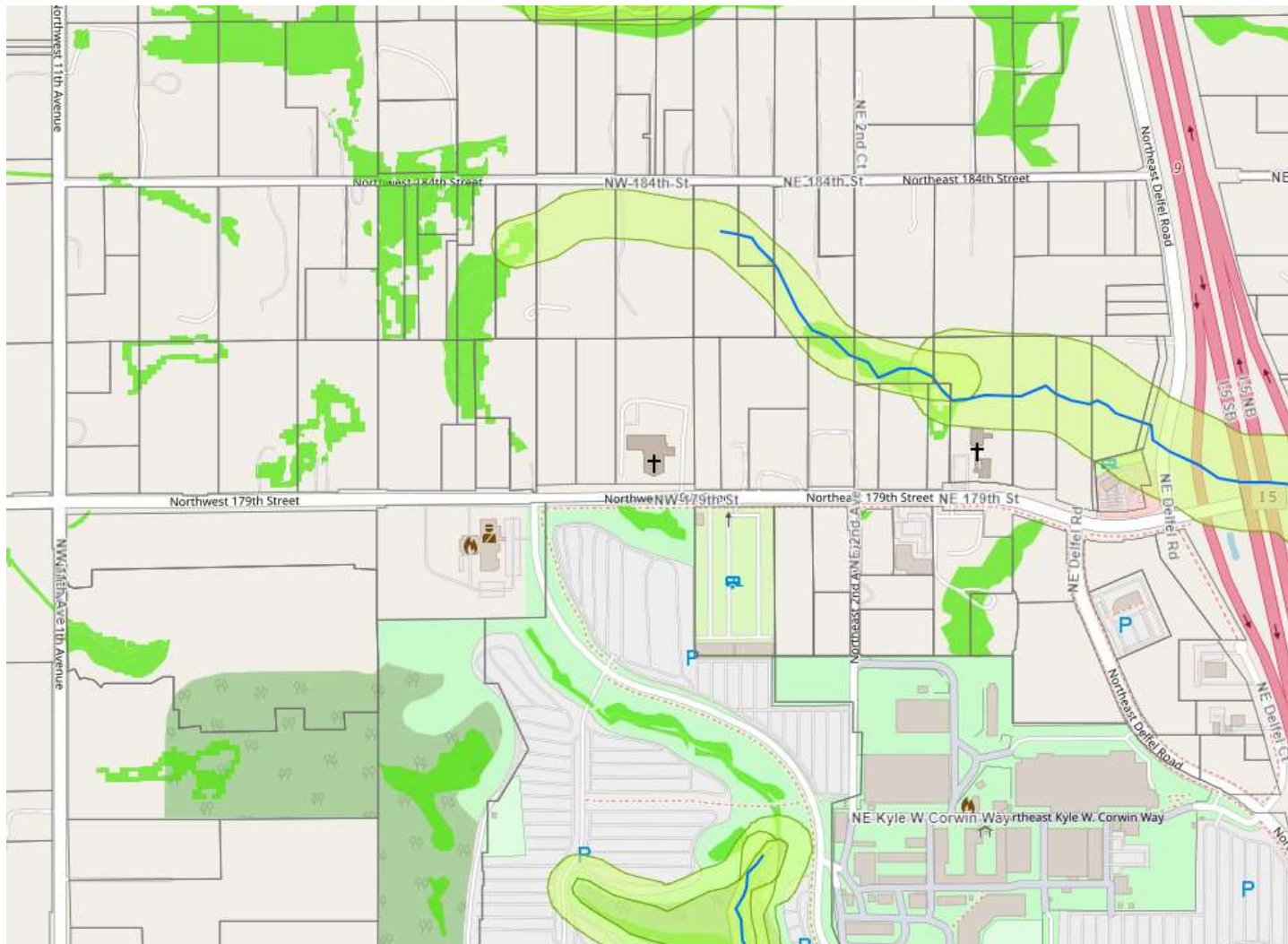
Topology – East (25th Avenue to 37th Avenue)



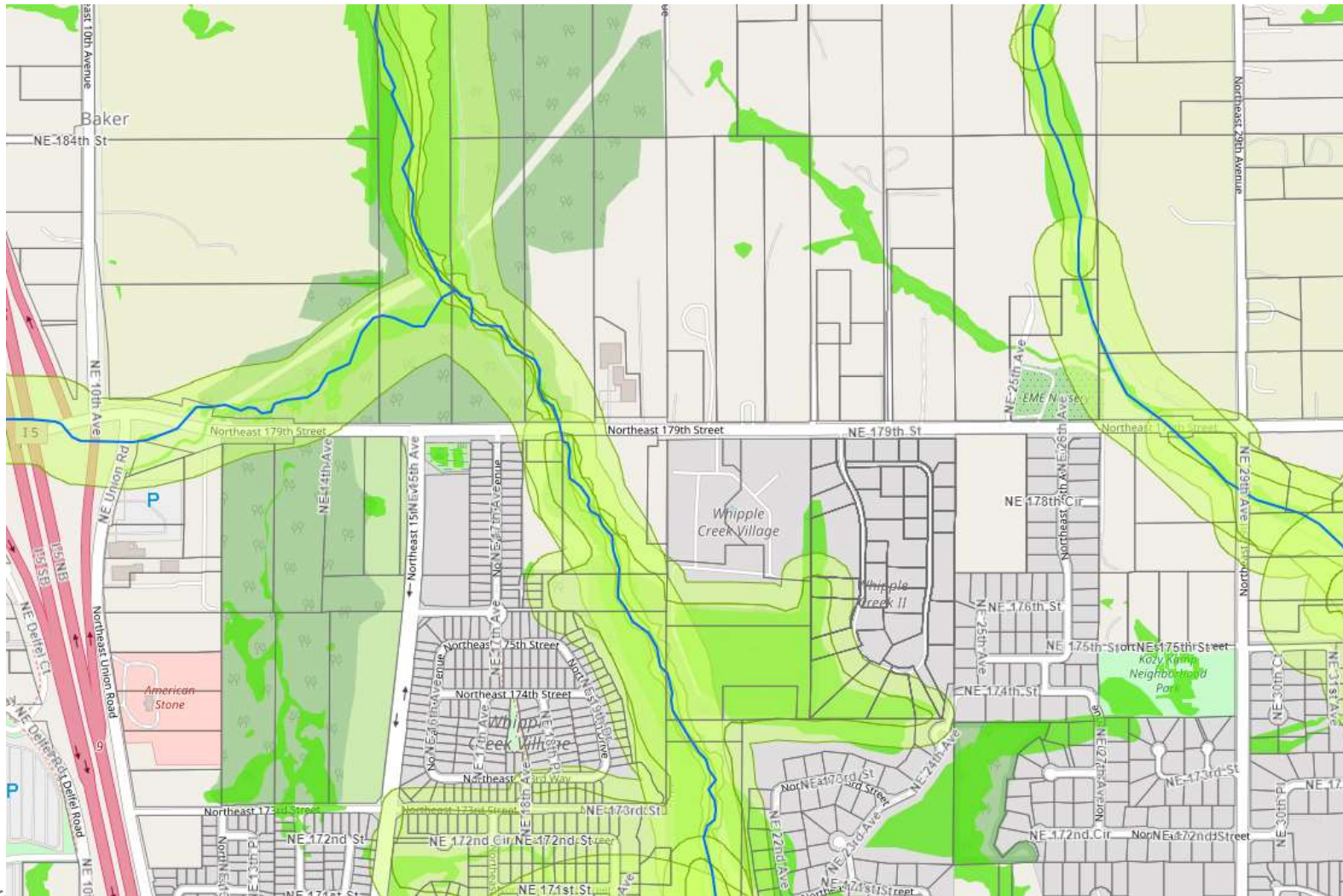
Topology – East (BPA Right-of-Way to 50th Avenue)



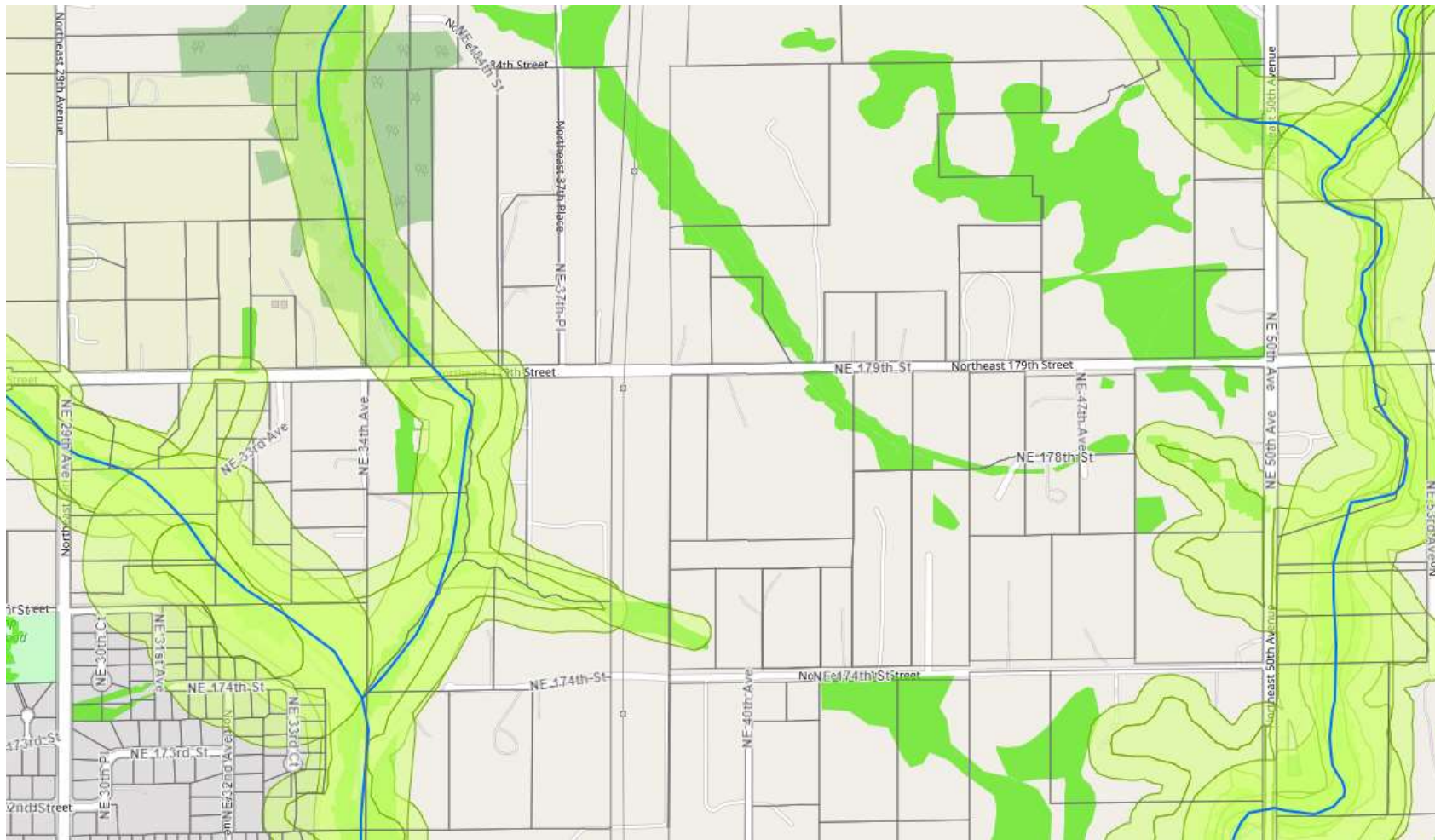
Environmental Constraints – Northwest 179th Street



Environmental Constraints – Northeast 179th Street (continued)

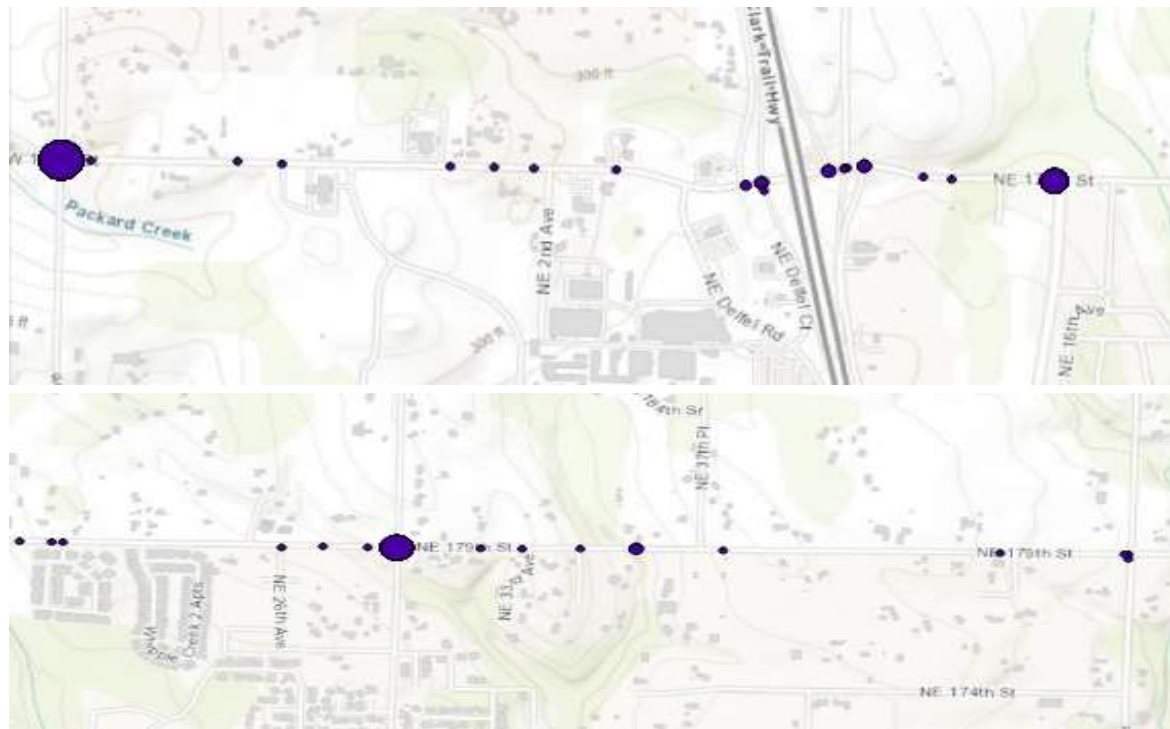


Environmental Constraints – Northeast 179th Street

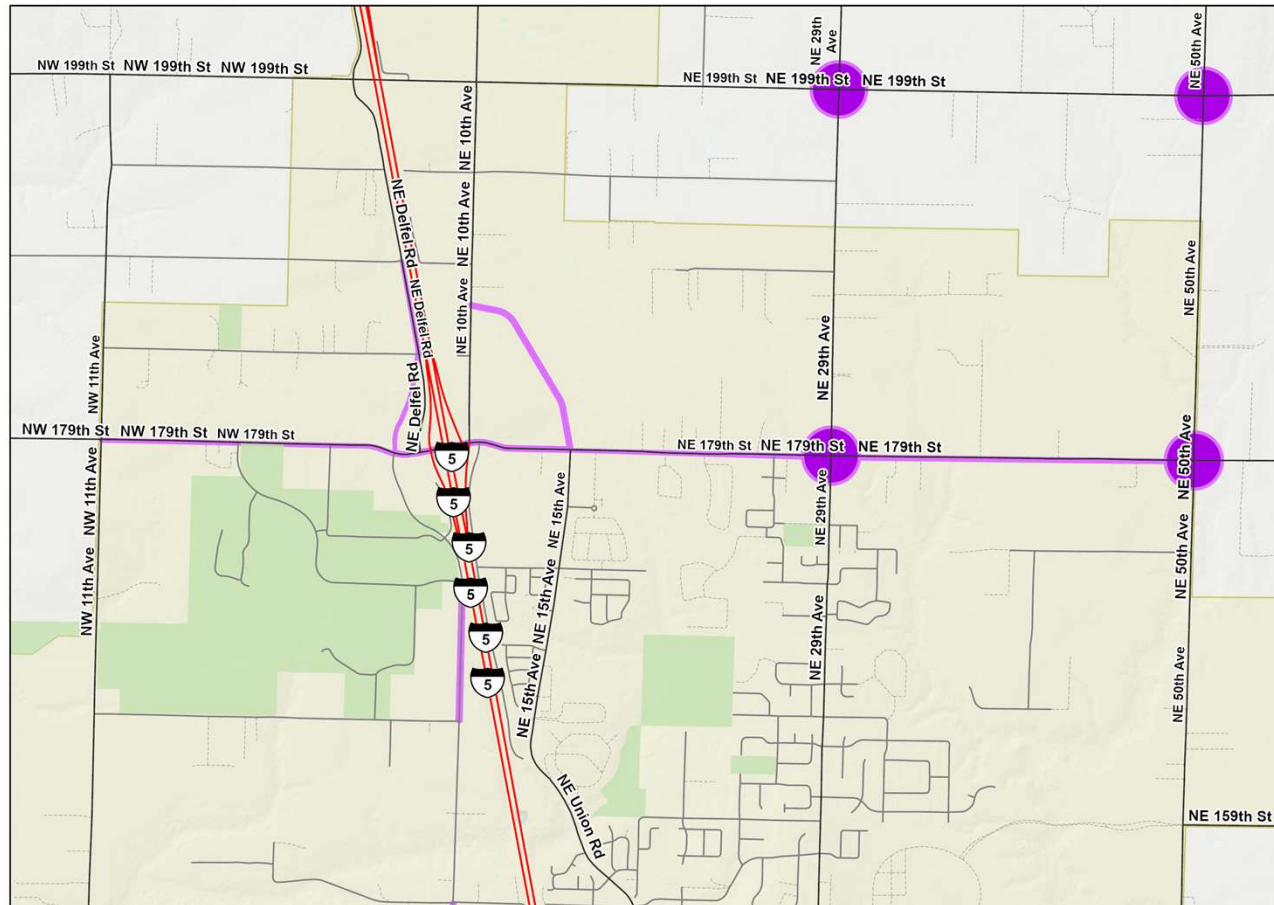


Collisions (2015-2019)

LOCATION	COLLISION TYPE					SEVERITY		
	ANGLE	REAR END	TURNING	SIDE-SWIPE	OTHER	SEVERE INJURY	OTHER INJURY	PDO
179 TH ST (NOT INCLUDING INTERSECTIONS)	1	3	3	2	10	0	7	12
179 TH ST (INCLUDING INTERSECTIONS)	26	8	10	5	15	1	35	28



Clark County Capital Projects



All Roads
 Interstate

State Route
 Arterial
 Forest Arterial

Minor Collector
 Forest Collector
 Private or Other

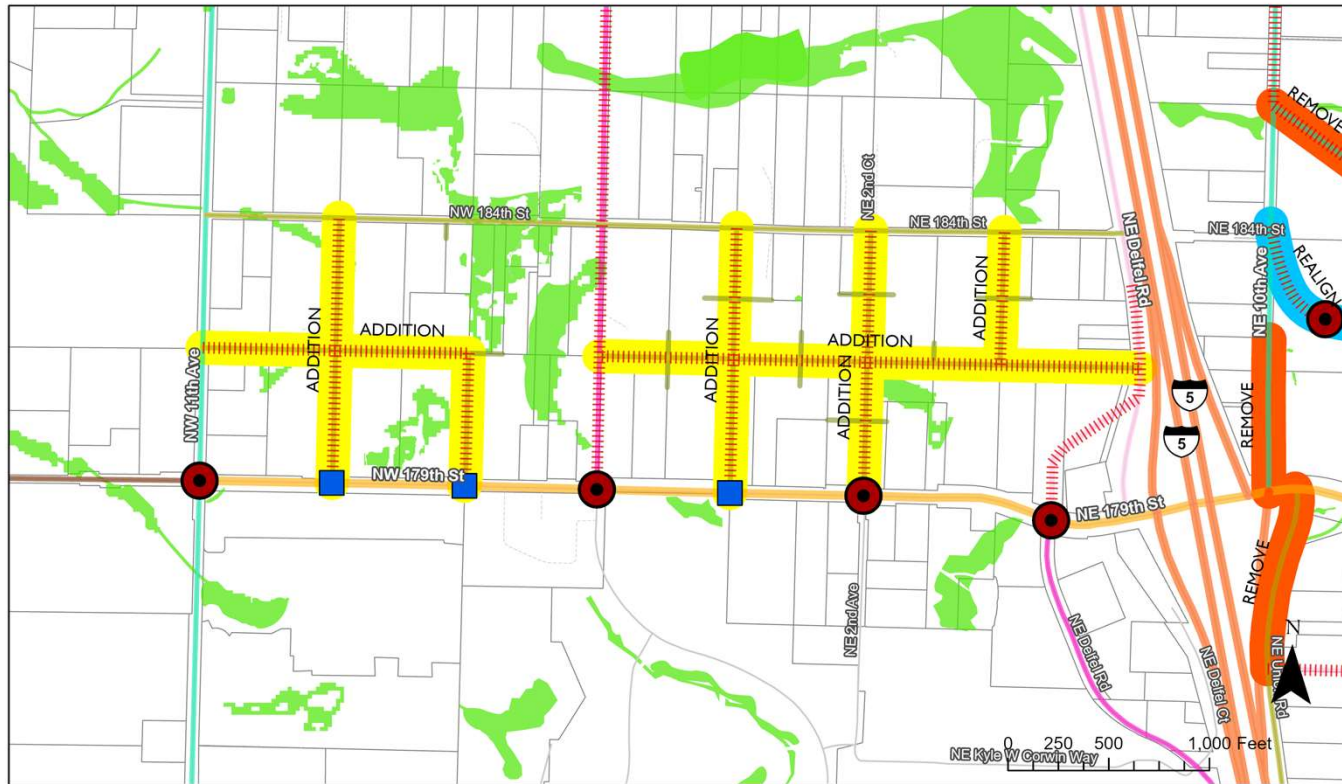
Capital Facilities Plan Projects





179th Street Access Management and Circulation Plan

Northwest 179th Street: Northwest 11th Avenue to Northeast Delfel Road



- | | | | | | |
|--|-------------------------------------|---------------------------------------|---|---|---|
| Type of Intersection | Interim Access, Emergency Use Only* | Align | Collector - 2 lanes w/ bike lanes | Minor Arterial - 4 lanes w/CLT & bike lanes | Rural Arterial - 2 Lanes |
| Type | Proposed Arterial | Remove | Collector - 2 lanes w/CLT & bike lanes | Neighborhood Circulator | Rural Minor Collector - 2 lanes w/shoulders |
| Amendment Types | Change | Potential Wetlands Presence | Commercial Industrial Local | Principal Arterial Parkway - 4 lanes & regional trail | State Route |
| Change | Addition | Arterial Atlas Classifications | Non-arterial local access streets | Principal Arterial - 4 lanes w/CLT & bike lanes | Rural Major Collector - 2 lanes w/shoulders |
| Interim Full Access, Future Right In / Right Out | Roundabout | Collector - 2 lanes | Minor Arterial - 2 lanes w/CLT & bike lanes | Rural Arterial - 2 Lanes | |
| Shared Access - Right In / Right Out | | | | | |

* The interim and future access of specific developments is determined based on the conditions of approval. The effect of the conditions will be coordinated with the engineering/design of 179th Street improvements, construction of and access to alternative circulation route(s), the responsible official imposing the conditions, and the property owners.

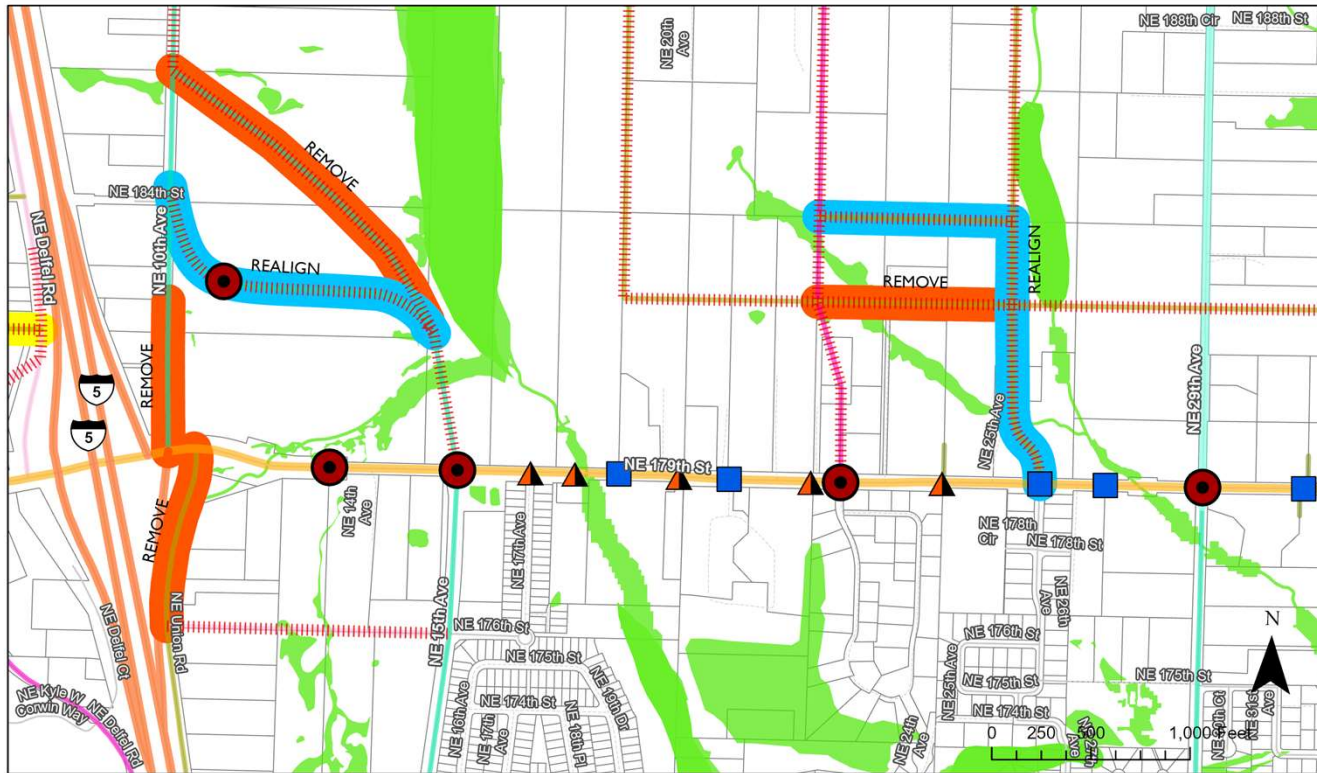
Folder: \\dark.root.local\home\users\commplan\hermenm\ArcGIS\Projects\179 Access Management Study\





179th Street Access Management and Circulation Plan

Northeast 179th Street: Northeast 10th Avenue to Northeast 29th Avenue



Type of Intersection	▲ Interim Access, Emergency Use Only *	● Realign	— Collector - 2 lanes w/ bike lanes	— Minor Arterial - 4 lanes w/CLT & bike lanes	— Rural Arterial - 2 Lanes
Type	▨ Proposed Arterial	○ Remove	— Collector - 2 lanes w/CLT & bike lanes	— Neighborhood Circulator	— Rural Minor Collector - 2 lanes wisholders
● Interim Full Access, Future Right In / Right Out	Amendment Types	■ Potential Wetlands Presence	— Commercial Industrial Local	— Principal Arterial Parkway - 4 lanes & regional trail	— State Route
● Roundabout	● Change	— Arterial Atlas Classifications	— Non-arterial local access streets	— Principal Arterial - 4 lanes w/CLT & bike lanes	
● Shared Access - Right In / Right Out	● Addition	— Collector - 2 lanes	— Minor Arterial - 2 lanes w/CLT & bike lanes	— Rural Major Collector - 2 lanes wisholders	

* The interim and future access of specific developments is determined based on the conditions of approval. The effect of the conditions will be coordinated with the engineering/design of 179th Street improvements, construction of and access to alternative circulation route(s), the responsible official imposing the conditions, and the property owners.

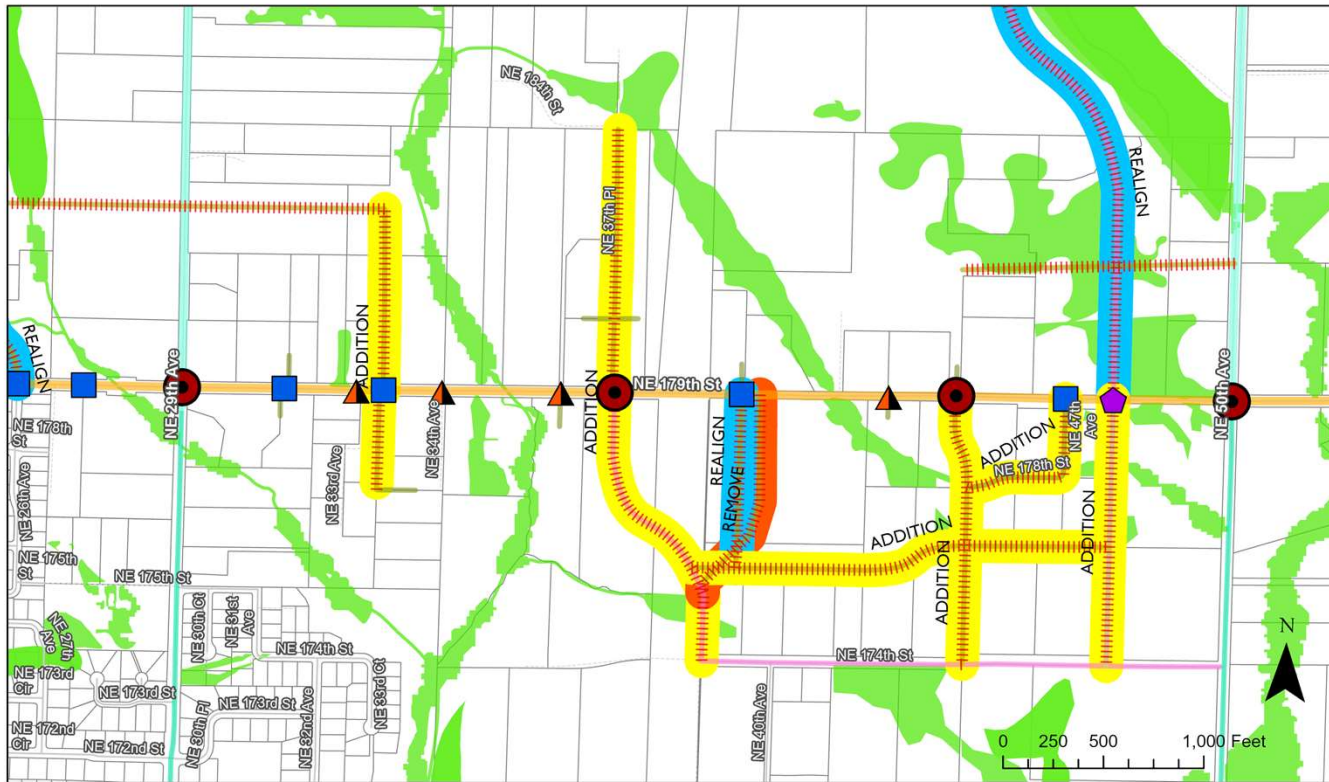
Folder: G:\ArcGIS\Projects\179 Access Management Study\





179th Street Access Management and Circulation Plan

Northeast 179th Street: Northeast 29th Avenue to Northeast 50th Avenue



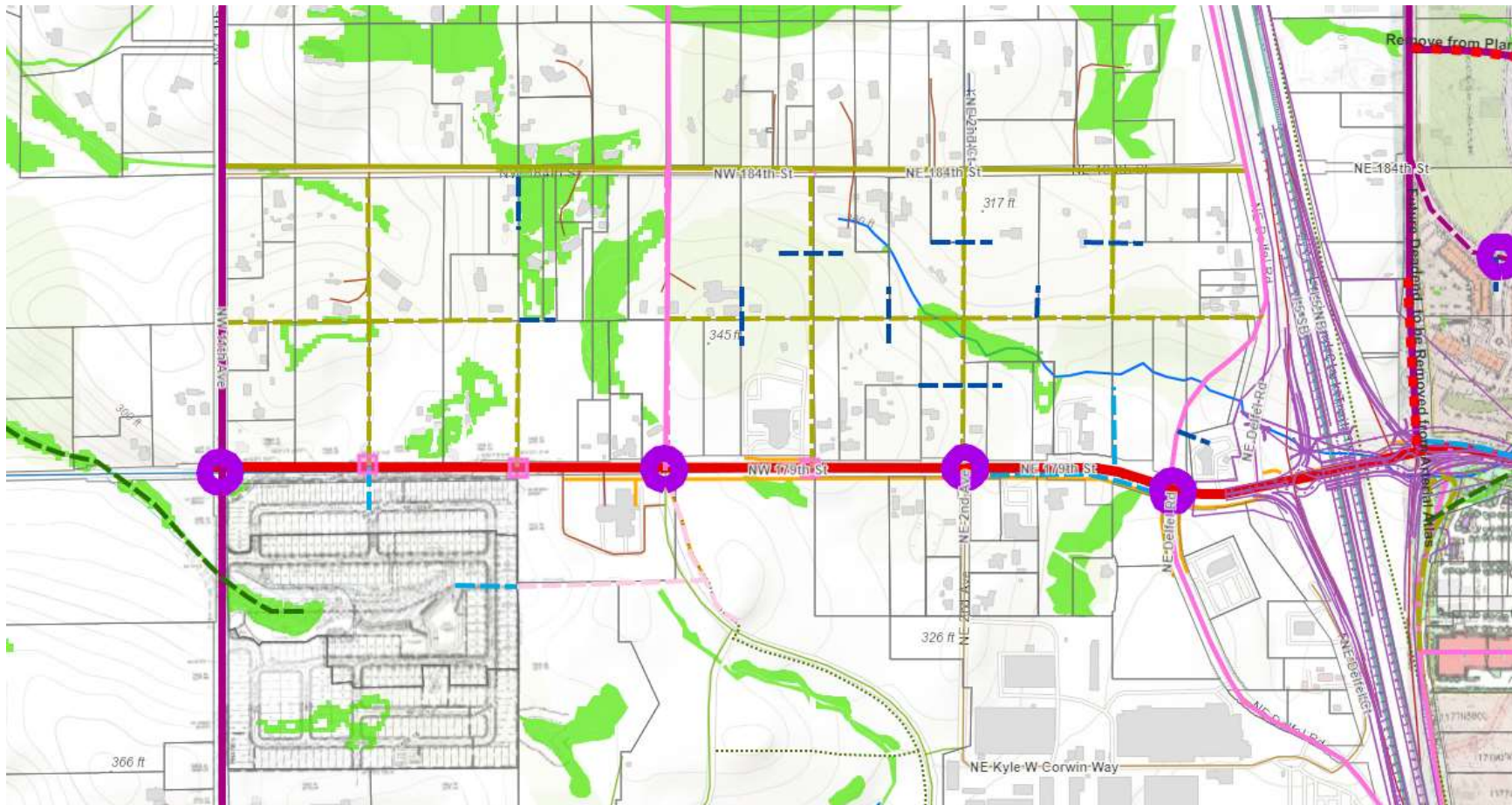
Type of Intersection	▲ Interim Access, Emergency Use Only *	● Realign	■ Collector - 2 lanes w/ bike lanes	■ Minor Arterial - 4 lanes w/CLT & bike lanes	■ Rural Arterial - 2 Lanes
Type	▨ Proposed Arterial	● Remove	■ Collector - 2 lanes w/CLT & bike lanes	■ Neighborhood Circulator	■ Rural Minor Collector - 2 lanes w/shoulders
Amendment Types	■ Change	■ Potential Wetlands Presence	■ Commercial Industrial Local	■ Principal Arterial Parkway - 4 lanes & regional trail	■ State Route
Change	■ Addition	Arterial Atlas Classifications	■ Non-arterial local access streets	■ Principal Arterial - 4 lanes w/CLT & bike lanes	■ Rural Major Collector - 2 lanes w/shoulders
■ Interim Full Access, Future Right In / Right Out		■ Collector - 2 lanes	■ Minor Arterial - 2 lanes w/CLT & bike lanes		
● Roundabout					
■ Shared Access - Right In / Right Out					

* The interim and future access of specific developments is determined based on the conditions of approval. The effect of the conditions will be coordinated with the engineering/design of 179th Street improvements, construction of and access to alternative circulation route(s), the responsible official imposing the conditions, and the property owners.

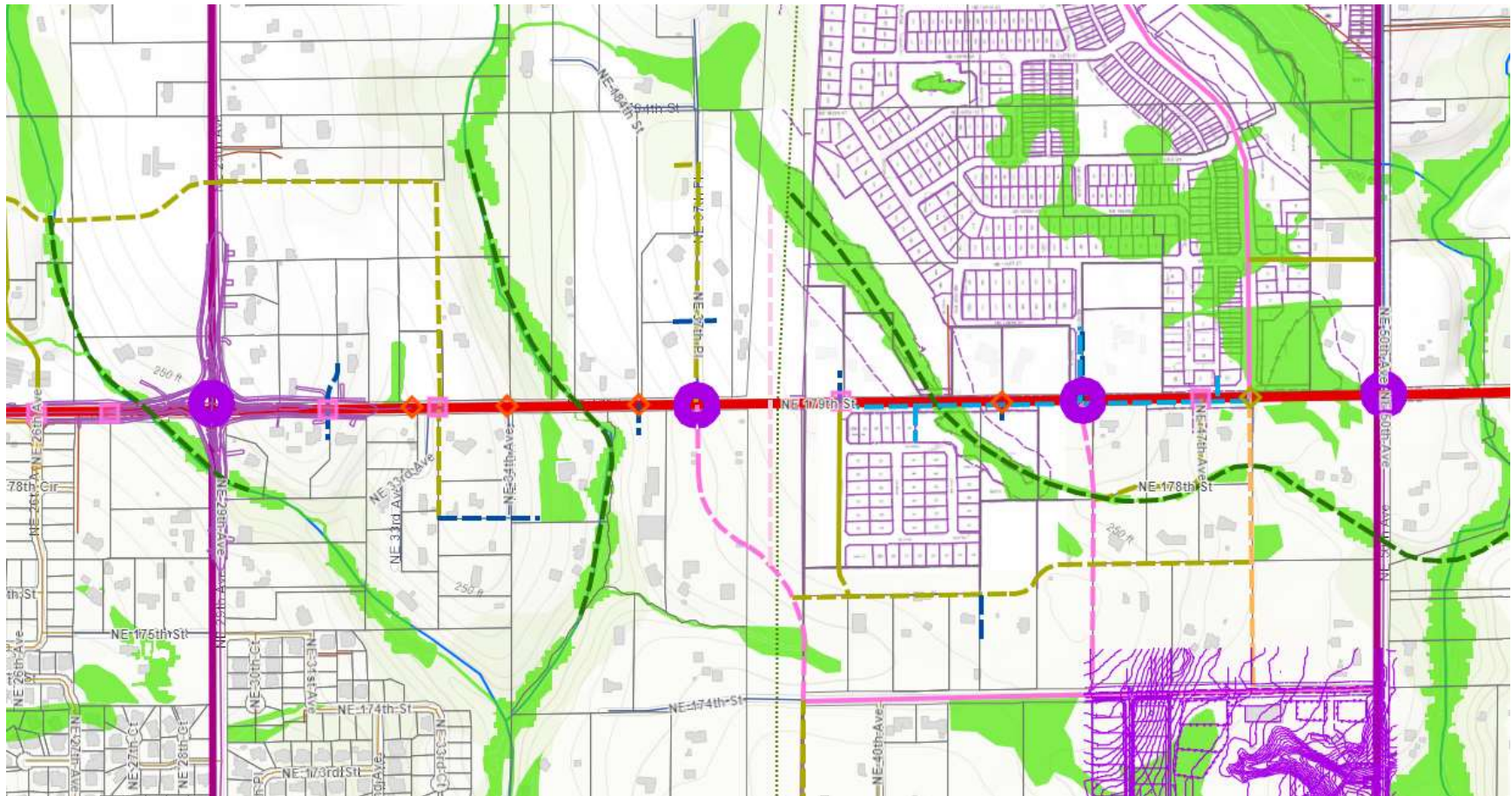
Folder: G:\ArcGIS\Projects\179 Access Management Study\



Pedestrian, Wildlife and Local Street Connectivity



Pedestrian, Wildlife and Local Street Connectivity



Next Steps

- **Public Outreach and Notice – January 2022**
- **Development Engineering Advisory Board – February 2, 2022**
- **Planning Commission – February 17, 2022**
- **County Council – March 15, 2022**



Thank you!

- **Contact Information**

Matt Hermen
Planner III
Clark County Public Works
(564)397-4343
Matt.hermen@clark.wa.gov

