

Clark County Sheriff's Office Shooting Range

Public Works

Council Time

October 14, 2020



High-level summary of key points

- CCSO is currently using Camp Bonneville and English Pit.
- CCSO to vacate English Pit. Tentative timeline is year end.
- Camp Bonneville improvements to facilitate CCSO move.
- FBI Lease options.
- Range management and site management.
- Public support and FAQs.
- Partnerships.
- Council guidance.



English Pit CCSO use overview

- History
- Partnerships
- Needs
- Policy and industry best practices require low light firearms training and qualifications for law enforcement.
- Locations to train are extremely limited.
- 1940, HB1064 have increased training standards and hours.
- Move by 2021

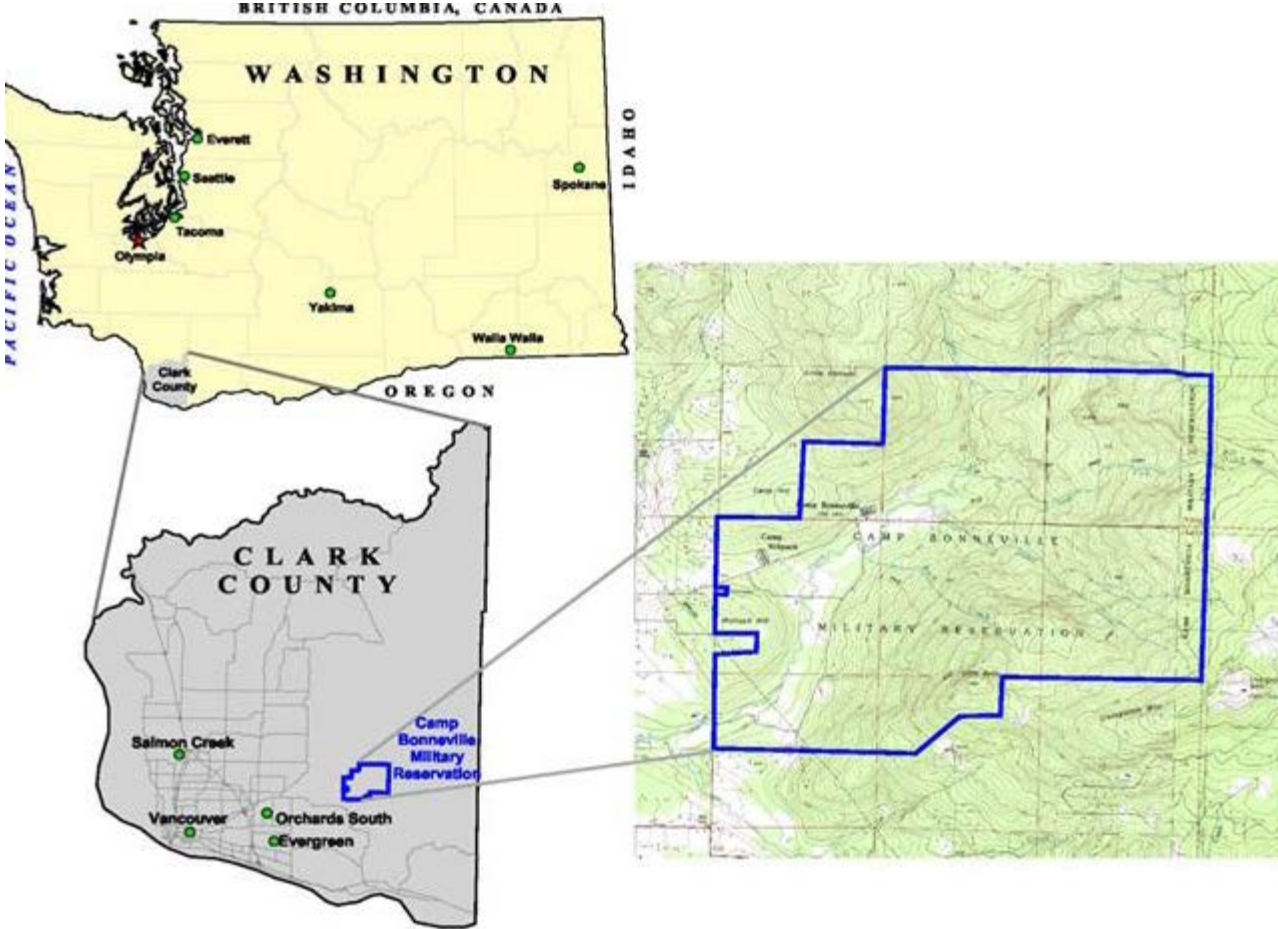


Camp Bonneville Leases, Agreements, and Use

- FBI range lease and use
- CCSO use
- Night use (request council approval)
- FBI range expansion, cabin refurbishment and pistol range improvements.
- FBI has \$34,000 for the range expansion.
- Timber Funds for improvements.



Camp Bonneville Location



Site Reuse Plan

8. INTENDED REUSE

Clark County is the authorized LRA for the Property and in September 1998 (updated in February 2003 and finalized in November 2005) published the Camp Bonneville Draft Reuse Plan (Reuse Plan). The Army is transferring the Property to Clark County under a conservation conveyance. The Reuse Plan identifies the Property reuse as recreational, with nine specific components: regional park, law enforcement training center, rustic retreat center/outdoor school, Native American cultural center, Clark College environmental education, trails and nature area, FBI firing range, timber resource management area, and habitat restoration. Approximately 800 acres of the 3,020 acres at Camp Bonneville will be dedicated as a regional park area. The Reuse Plan is considered by the Army as the primary document that describes the intended reuse of the Property. See Figure 9 - Reuse Plan Land Uses for the locations of the reuse components.

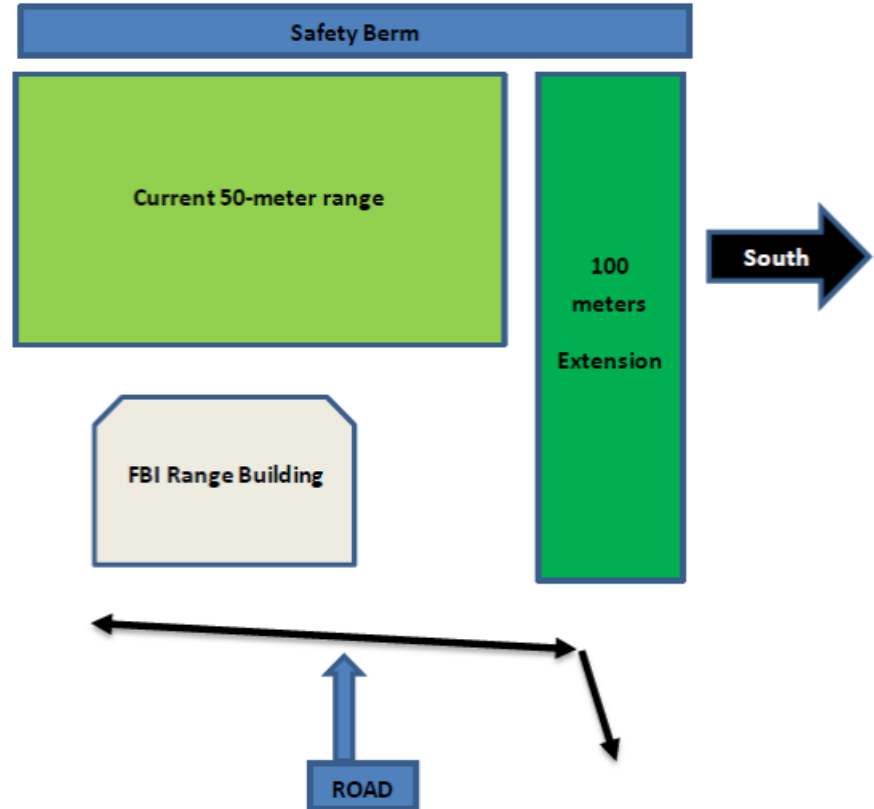


Camp Bonneville Forest Management and Fire Prevention

- County continues to implement its sustainable forest management plan and to date has thinned 950 acres targeting forest health.
- County has completed unexploded ordnance clean-up at the camp, recently completing the west slopes. This area happens to be one of the more heavily developed borders of the park. Unexploded ordnance clean-up requires the removal of understory vegetation and small trees so that crews can effectively search for ordinance. These practices also reduce high levels of ladder fuels.
- County's Forester began the formation of a team that will develop the value loss prevention plan for Camp Bonneville.
- County pays the fire protection assessment on many different properties including larger, undeveloped or forested parks, conservation lands, and Camp Bonneville.
- DNR support, etc.



Range Improvements Southern Expansion to 100m



Camp Bonneville Cabin Improvements



30m pistol range cleanup



Additional Site Support

- Onsite DNR presence
- Completion of clean up work
- Ecology outreach
- Public Works management of the site
- Public Works scheduling coordination of the range calendar
- Future Regional Park master planning work and public participation process
- Site FAQ - <https://clark.wa.gov/public-works/camp-bonneville-faqs>



Tentative Timeline and Council Guidance

Date	Description
October 2020	<ul style="list-style-type: none">• Continue negotiations with FBI regarding proposed User Agreement
November 2020	<ul style="list-style-type: none">• Develop an MOU with CCSO addressing the move and management logistics• Discuss needed repairs and/or improvements• Address scheduling and calendar coordination
November 2020	<ul style="list-style-type: none">• Council thoughts on user agreements and potential rates
December 2020	<ul style="list-style-type: none">• Move needed items from English Pit for CCSO use

