

Vote Both Sides

Clark County, Washington

Sample Ballot  
Primary and Special Election  
August 07, 2018

Precinct **SAMPLE**

**Who donates to campaigns?**  
View contributors for candidates and measures  
**Public Disclosure Commission**  
www.pdc.wa.gov  
Toll Free (877) 601-2828

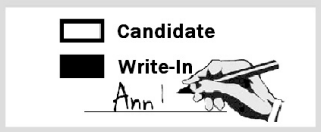
**Instructions**



Use a blue or black pen to completely fill in the box to the left of your choice.

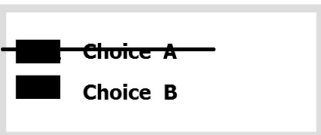
Vote for one choice for each contest or ballot measure. If you vote for more than one choice for that contest or ballot measure, no votes will be counted for that contest or ballot measure.

To vote for a write-in candidate:



Completely fill in the box to the left of the words "Write-in" and write the name of the candidate on the line.

To correct a mistake:



Draw a line through the entire candidate's name or measure choice as shown above. You then have the option of marking another choice.

**Elections Office Contact Information:**  
Location: 1408 Franklin St., Vancouver  
Mail To: PO Box 8815, Vancouver, WA 98666  
Telephone: (564) 397-2345  
Speech-to-Speech Relay: (800) 833-6384  
Fax Number: (564) 397-2394  
Email: elections@clark.wa.gov  
Website: clarkvotes.org

**Begin Voting at the top of the next column.**



**READ:** Each candidate for partisan office may state a political party that he or she prefers. A candidate's preference does not imply that the candidate is nominated or endorsed by the party, or that the party approves of or associates with that candidate.

**Federal Partisan Office**  
**U.S. Senator - Vote For One**

- Thor Amundson (Prefers Independent Party)
- Dave Strider (Prefers Independent Party)
- Joey Gibson (Prefers Republican Party)
- Mike Luke (Prefers Libertarian Party)
- GoodSpaceGuy (Prefers Republican Party)
- Clint R. Tannehill (Prefers Democratic Party)
- Maria Cantwell (Prefers Democratic Party)
- Susan Hutchison (Prefers Republican Party)
- Brad Chase (Prefers FDFR Party)
- Tim Owen (Prefers Republican Party)
- Matthew D. Heines (Prefers Republican Party)
- Sam Wright (Prefers The Human Rights Party)
- Art Coday (Prefers Republican Party)
- John Orlinski (Prefers Republican Party)
- Charlie R Jackson (Prefers Independent Party)
- Keith Swank (Prefers Republican Party)
- Alex Tsimerman (Prefers StandupAmerica Party)
- RC Smith (Prefers Republican Party)
- Don L. Rivers (Prefers Democratic Party)
- Jennifer Gigi Ferguson (Prefers Independent Party)
- Steve Hoffman (Prefers Freedom Socialist Party)

- George H. Kalberer (Prefers Democratic Party)
- James Robert "Jimmie" Deal (Prefers Green Party)
- Roque "Rocky" De La Fuente (Prefers Republican Party)
- Jon Butler (Prefers Independent Party)
- Dave Bryant (Prefers Republican Party)
- Mohammad Said (Prefers Democratic Party)
- Matt Hawkins (Prefers Republican Party)
- Glen R Stockwell (Prefers Republican Party)
- Write-in

**Federal Partisan Office**

**U.S. Representative**  
**3rd Congressional District**  
**Vote For One**

- David McDevitt (Prefers Democratic Party)
- Michael Cortney (Prefers Republican Party)
- Jaime Herrera Beutler (Prefers Republican Party)
- Carolyn Long (Prefers Democratic Party)
- Martin Hash (Prefers Democratic Party)
- Earl Bowerman (Prefers Republican Party)
- Dorothy Gasque (Prefers Democratic Party)
- Write-in

Sample Ballot 12003000100082

000000001102

Sample Ballot

2833031277

Vote Both Sides

Clark County, Washington

Sample Ballot  
Primary and Special Election  
August 07, 2018

Precinct *SAMPLE*

**State Legislative Partisan Offices**

**State Representative**  
14th Legislative District  
Position No. 1  
Vote For One

Chris Corry  
(Prefers Republican Party)

Kathy Coffey  
(Prefers Republican Party)

Sasha Bentley  
(Prefers Democratic Party)

Earl Steven Lee  
(Prefers Democratic Party)

Write-in

**State Representative**  
14th Legislative District  
Position No. 2  
Vote For One

Noah Ramirez  
(Prefers Democratic Party)

Liz Hallock  
(Prefers Democratic Party)

Gina Mosbrucker  
(Prefers Republican Party)

Write-in

**State Representative**  
17th Legislative District  
Position No. 1  
Vote For One

Tanisha Harris  
(Prefers Democratic Party)

James Tolson  
(Prefers Democratic Party)

Vicki Kraft  
(Prefers Republican Party)

Write-in

**State Representative**  
17th Legislative District  
Position No. 2  
Vote For One

Damion E Jiles, Sr.  
(Prefers Democratic Party)

Paul Harris  
(Prefers Republican Party)

Write-in

**State Representative**  
18th Legislative District  
Position No. 1  
Vote For One

Brandon Vick  
(Prefers Republican Party)

Chris Thobaben  
(Prefers Democratic Party)

Write-in

**State Representative**  
18th Legislative District  
Position No. 2  
Vote For One

Kathy Gillespie  
(Prefers Democratic Party)

Larry A. Hoff  
(Prefers Republican Party)

Write-in

**State Representative**  
20th Legislative District  
Position No. 1  
Vote For One

John Thompson  
(Prefers Democratic Party)

Richard DeBolt  
(Prefers GOP Party)

Write-in

**State Representative**  
20th Legislative District  
Position No. 2  
Vote For One

Mark Smith  
(Prefers Independent Party)

Brennan Bailey  
(Prefers Democratic Party)

Ed Orcutt  
(Prefers Republican Party)

Write-in

**State Representative**  
49th Legislative District  
Position No. 1  
Vote For One

Sharon Wylie  
(Prefers Democratic Party)

Write-in

**State Representative**  
49th Legislative District  
Position No. 2  
Vote For One

Monica Jurado Stonier  
(Prefers Democratic Party)

Write-in

**County Partisan Offices**

**County Assessor**  
Vote For One

Peter Van Nortwick  
(Prefers Republican Party)

Darren Wertz  
(Prefers Republican Party)

Norbert Schlecht  
(States No Party Preference)

Write-in

Sample Ballot 12003000200089

000000001205

Sample Ballot

2833031277

Vote Both Sides

Vote Both Sides

Clark County, Washington

Sample Ballot  
Primary and Special Election  
August 07, 2018

Precinct *SAMPLE*

**County Auditor**  
Vote For One  
 Greg Kimsey  
(Prefers GOP Party)  
 Write-in

**County Clerk**  
Vote For One  
 Barbara L. Melton  
(Prefers Democratic Party)  
 Scott G Weber  
(Prefers Republican Party)  
 Write-in

**County Council  
Chair (At-Large)**  
Vote For One  
 Marc Boldt  
(States No Party Preference)  
 Eric K. Holt  
(Prefers Democratic Party)  
 Eileen Quiring  
(Prefers Republican Party)  
 Christy Stanley  
(Prefers Democratic Party)  
 Write-in

**County Council  
Councillor - District No. 1**  
Vote For One  
 Veny Razumovsky  
(Prefers CascadiaNow Party)  
 Jim Moeller  
(Prefers Democratic Party)  
 Jeanne E. Stewart  
(Prefers Republican Party)  
 Temple Lentz  
(Prefers Democratic Party)  
 Write-in

**County Council  
Councillor - District No. 2**  
Vote For One  
 Julie Olson  
(Prefers Republican Party)  
 Elisabeth Veneman  
(Prefers Republican Party)  
 Write-in

**County Prosecuting Attorney**  
Vote For One  
 Tony Golik  
(Prefers Democratic Party)  
 Write-in

**County Sheriff**  
Vote For One  
 Chuck E. Atkins  
(Prefers Republican Party)  
 Write-in

**County Treasurer**  
Vote For One  
 Robert Hinds  
(States No Party Preference)  
 Alishia Topper  
(States No Party Preference)  
 Write-in

**Local Nonpartisan Offices**

**City of Vancouver  
Council - Position No. 1  
Unexpired Three Year Term**  
Vote For One  
 Laurie Lebowsky  
 Sarah Fox  
 Maureen McGoldrick  
 Mary Elkin  
 Adam Shetler  
 Write-in

**Public Utility District No. 1  
of Clark County  
Commissioner - District No. 1**  
Vote For One  
 Jim Malinowski  
 Judy Chipman  
 Sherry Erickson  
 Write-in

000000001102 Sample Ballot 22003000300081

Sample Ballot

2833031277

Vote Both Sides

Clark County, Washington

Sample Ballot  
Primary and Special Election  
August 07, 2018

Precinct **SAMPLE**

<p style="text-align: center;"><b>Local Measure</b></p> <p><b>Clark County Fire District No. 13 Proposition No. 1</b> Levy Lid Lift Authorizing Restoration of Previous Property Tax Levy</p> <p>The Board of Clark County Fire District #13 adopted Resolution No. 2018-03-01 concerning a proposition to maintain and adequately fund District operations.</p> <p>This proposition authorizes the District to restore its regular property tax levy to \$1.25 per \$1,000.00 of assessed valuation in 2018 for collection in 2019 and authorize setting the levy limit factor at 106% (not to exceed the \$1.25 rate) for each of the five succeeding years for the purposes of acquiring emergency equipment, addressing capital needs, and improving operations. The maximum allowable levy in 2023 shall serve as the base for subsequent levy limitations.</p> <p>Should this proposition be:</p> <p><input type="checkbox"/> Approved</p> <p><input type="checkbox"/> Rejected</p>	<p><b>Precinct Committee Officer Precinct 106</b> Vote For One</p> <p><input type="checkbox"/> Kathleen "Kasey" Cote DEM (I affirm I am a Democrat)</p> <p><input type="checkbox"/> Mike Calhoun DEM (I affirm I am a Democrat)</p> <p><input type="checkbox"/> Kevin Durette DEM (I affirm I am a Democrat)</p>	<p><b>Precinct Committee Officer Precinct 173</b> Vote For One</p> <p><input type="checkbox"/> Kathryn Beecher DEM (I affirm I am a Democrat)</p> <p><input type="checkbox"/> Paul Ventura DEM (I affirm I am a Democrat)</p> <p><input type="checkbox"/> Daniel Warren Ray DEM (I affirm I am a Democrat)</p>
<p style="text-align: center;"><b>Election of Political Party Precinct Committee Officer</b></p>	<p><b>Precinct Committee Officer Precinct 108</b> Vote For One</p> <p><input type="checkbox"/> Danielle Jokela DEM (I affirm I am a Democrat)</p> <p><input type="checkbox"/> Brian D. Leahy DEM (I affirm I am a Democrat)</p>	<p><b>Precinct Committee Officer Precinct 190</b> Vote For One</p> <p><input type="checkbox"/> Mark Engleman REP (I affirm I am a Republican)</p> <p><input type="checkbox"/> Parker Truax REP (I affirm I am a Republican)</p> <p><input type="checkbox"/> Catherine Rich DEM (I affirm I am a Democrat)</p> <p><input type="checkbox"/> Trevor Top DEM (I affirm I am a Democrat)</p>
<p>For this office only: In order to vote for precinct committee officer, a partisan office, you must affirm that you are a Democrat or a Republican and may vote only for one candidate from the party you select. Your vote for a candidate affirms your affiliation with the same party as the candidate. This preference is private and will not be matched to your name or shared.</p>	<p><b>Precinct Committee Officer Precinct 110</b> Vote For One</p> <p><input type="checkbox"/> Adam Aguilera DEM (I affirm I am a Democrat)</p> <p><input type="checkbox"/> Kendra Wert DEM (I affirm I am a Democrat)</p> <p><input type="checkbox"/> Will Roth DEM (I affirm I am a Democrat)</p> <p><input type="checkbox"/> Eileen Cowen DEM (I affirm I am a Democrat)</p>	<p><b>Precinct Committee Officer Precinct 220</b> Vote For One</p> <p><input type="checkbox"/> Tzipi Kathleen Hartson REP (I affirm I am a Republican)</p> <p><input type="checkbox"/> Dan Clark REP (I affirm I am a Republican)</p>
<p><b>Precinct Committee Officer Precinct 104</b> Vote For One</p> <p><input type="checkbox"/> John Mudge DEM (I affirm I am a Democrat)</p> <p><input type="checkbox"/> Leah Perkel DEM (I affirm I am a Democrat)</p>	<p><b>Precinct Committee Officer Precinct 130</b> Vote For One</p> <p><input type="checkbox"/> Tom Lineham DEM (I affirm I am a Democrat)</p> <p><input type="checkbox"/> Mark Didrickson DEM (I affirm I am a Democrat)</p>	<p><b>Precinct Committee Officer Precinct 225</b> Vote For One</p> <p><input type="checkbox"/> Gary D. Hansen DEM (I affirm I am a Democrat)</p> <p><input type="checkbox"/> James Luce DEM (I affirm I am a Democrat)</p> <p><input type="checkbox"/> Chris Prothero DEM (I affirm I am a Democrat)</p>
	<p><b>Precinct Committee Officer Precinct 170</b> Vote For One</p> <p><input type="checkbox"/> Fred E. Swink REP (I affirm I am a Republican)</p> <p><input type="checkbox"/> James Heckler REP (I affirm I am a Republican)</p>	

Sample Ballot22003000400088

000000001205

Sample Ballot

2833031277

Vote Both Sides

Clark County, Washington

Sample Ballot  
Primary and Special Election  
August 07, 2018

Precinct *SAMPLE*

Sample Ballot32003000500080  
000000001102

Sample Ballot

2833031277

<p><b>Precinct Committee Officer</b> <b>Precinct 240</b> Vote For One</p> <p><input type="checkbox"/> Jack McClary REP (I affirm I am a Republican)</p> <p><input type="checkbox"/> David H. Funk REP (I affirm I am a Republican)</p> <p><input type="checkbox"/> Vicki Work DEM (I affirm I am a Democrat)</p> <p><input type="checkbox"/> Tuffy von Borstel DEM (I affirm I am a Democrat)</p>	<p><b>Precinct Committee Officer</b> <b>Precinct 350</b> Vote For One</p> <p><input type="checkbox"/> Dale Kintz REP (I affirm I am a Republican)</p> <p><input type="checkbox"/> Lyle Cabe REP (I affirm I am a Republican)</p> <p><input type="checkbox"/> Peter Hotrum REP (I affirm I am a Republican)</p> <p><input type="checkbox"/> Deborah Hall DEM (I affirm I am a Democrat)</p> <p><input type="checkbox"/> Chris (Cheat) Edmonson DEM (I affirm I am a Democrat)</p>	<p><b>Precinct Committee Officer</b> <b>Precinct 448</b> Vote For One</p> <p><input type="checkbox"/> Jacqueline Kuran DEM (I affirm I am a Democrat)</p> <p><input type="checkbox"/> Jessica Prutz DEM (I affirm I am a Democrat)</p>
<p><b>Precinct Committee Officer</b> <b>Precinct 294</b> Vote For One</p> <p><input type="checkbox"/> Vincent Marcy REP (I affirm I am a Republican)</p> <p><input type="checkbox"/> Gunnar Metzger REP (I affirm I am a Republican)</p>	<p><b>Precinct Committee Officer</b> <b>Precinct 370</b> Vote For One</p> <p><input type="checkbox"/> Tony Baldwin DEM (I affirm I am a Democrat)</p> <p><input type="checkbox"/> Tiffany Burnette DEM (I affirm I am a Democrat)</p> <p><input type="checkbox"/> Tyler Davis DEM (I affirm I am a Democrat)</p>	<p><b>Precinct Committee Officer</b> <b>Precinct 449</b> Vote For One</p> <p><input type="checkbox"/> Marjorie Millner DEM (I affirm I am a Democrat)</p> <p><input type="checkbox"/> Carolyn Affolter DEM (I affirm I am a Democrat)</p> <p><input type="checkbox"/> Chris Thobaben DEM (I affirm I am a Democrat)</p>
<p><b>Precinct Committee Officer</b> <b>Precinct 325</b> Vote For One</p> <p><input type="checkbox"/> John M. Acken DEM (I affirm I am a Democrat)</p> <p><input type="checkbox"/> Kala Madugula DEM (I affirm I am a Democrat)</p>	<p><b>Precinct Committee Officer</b> <b>Precinct 420</b> Vote For One</p> <p><input type="checkbox"/> Kent Meyer DEM (I affirm I am a Democrat)</p> <p><input type="checkbox"/> Heather Payne DEM (I affirm I am a Democrat)</p> <p><input type="checkbox"/> David E. Poland DEM (I affirm I am a Democrat)</p>	<p><b>Precinct Committee Officer</b> <b>Precinct 452</b> Vote For One</p> <p><input type="checkbox"/> Douglas Canoose DEM (I affirm I am a Democrat)</p> <p><input type="checkbox"/> Elizabeth Meyer DEM (I affirm I am a Democrat)</p>
<p><b>Precinct Committee Officer</b> <b>Precinct 330</b> Vote For One</p> <p><input type="checkbox"/> Candice Schafer DEM (I affirm I am a Democrat)</p> <p><input type="checkbox"/> Justin Allen DEM (I affirm I am a Democrat)</p>	<p><b>Precinct Committee Officer</b> <b>Precinct 430</b> Vote For One</p> <p><input type="checkbox"/> Brian R. Gellatly REP (I affirm I am a Republican)</p> <p><input type="checkbox"/> Erika Metzger REP (I affirm I am a Republican)</p> <p><input type="checkbox"/> Ryan Paulos DEM (I affirm I am a Democrat)</p> <p><input type="checkbox"/> Heather B Lindberg DEM (I affirm I am a Democrat)</p> <p><input type="checkbox"/> Cindy Haverkate DEM (I affirm I am a Democrat)</p>	<p><b>Precinct Committee Officer</b> <b>Precinct 500</b> Vote For One</p> <p><input type="checkbox"/> Samantha A.M. Beeler REP (I affirm I am a Republican)</p> <p><input type="checkbox"/> David Standal REP (I affirm I am a Republican)</p> <p><input type="checkbox"/> Benjamin Petersen DEM (I affirm I am a Democrat)</p> <p><input type="checkbox"/> Kathryn Bode DEM (I affirm I am a Democrat)</p>
<p><b>Precinct Committee Officer</b> <b>Precinct 336</b> Vote For One</p> <p><input type="checkbox"/> David Wright REP (I affirm I am a Republican)</p> <p><input type="checkbox"/> Red Warren REP (I affirm I am a Republican)</p>		<p><b>Precinct Committee Officer</b> <b>Precinct 527</b> Vote For One</p> <p><input type="checkbox"/> Peter Silliman REP (I affirm I am a Republican)</p> <p><input type="checkbox"/> Jack L Holtz REP (I affirm I am a Republican)</p>

Vote Both Sides

Sample Ballot  
Primary and Special Election  
August 07, 2018

Clark County, Washington

Precinct *SAMPLE*

Sample Ballot32003000600087  
000000001205

Sample Ballot

2833031277

**Precinct Committee Officer**  
**Precinct 540**  
Vote For One  
 Frank Decker REP  
(I affirm I am a Republican)  
 Linda Ford REP  
(I affirm I am a Republican)

**Precinct Committee Officer**  
**Precinct 543**  
Vote For One  
 Bill Davis REP  
(I affirm I am a Republican)  
 Christian Spartacus REP  
Berrigan  
(I affirm I am a Republican)

**Precinct Committee Officer**  
**Precinct 566**  
Vote For One  
 Lewis Gerhardt REP  
(I affirm I am a Republican)  
 Virnin Lee REP  
McKellar-Dickinson  
(I affirm I am a Republican)

**Precinct Committee Officer**  
**Precinct 603**  
Vote For One  
 Rick Halle REP  
(I affirm I am a Republican)  
 Ben Seppala REP  
(I affirm I am a Republican)

**Precinct Committee Officer**  
**Precinct 611**  
Vote For One  
 Dan Rockhold REP  
(I affirm I am a Republican)  
 Sid Sutherland REP  
(I affirm I am a Republican)

**Precinct Committee Officer**  
**Precinct 617**  
Vote For One  
 Seth Aho REP  
(I affirm I am a Republican)  
 Brian J. Rohan REP  
(I affirm I am a Republican)

**Precinct Committee Officer**  
**Precinct 625**  
Vote For One  
 David P. Anderson REP  
(I affirm I am a Republican)  
 Jonathan VanGelder REP  
(I affirm I am a Republican)  
 Steve Jacobson REP  
(I affirm I am a Republican)

**Precinct Committee Officer**  
**Precinct 632**  
Vote For One  
 Richard Colwell REP  
(I affirm I am a Republican)  
 Darrel Nash REP  
(I affirm I am a Republican)  
 Troy Maxcy DEM  
(I affirm I am a Democrat)  
 Brigg R. Franklin DEM  
(I affirm I am a Democrat)

**Precinct Committee Officer**  
**Precinct 633**  
Vote For One  
 Rebecca Wiegand DEM  
(I affirm I am a Democrat)  
 Kayla Swart DEM  
(I affirm I am a Democrat)

**Precinct Committee Officer**  
**Precinct 649**  
Vote For One  
 Alex Banse-Fay REP  
(I affirm I am a Republican)  
 Cerisse Wilson REP  
(I affirm I am a Republican)

**Precinct Committee Officer**  
**Precinct 653**  
Vote For One  
 Rebecca deJongh DEM  
(I affirm I am a Democrat)  
 James L. Proctor, Jr. DEM  
(I affirm I am a Democrat)

**Precinct Committee Officer**  
**Precinct 669**  
Vote For One  
 Kerry Christofanelli REP  
(I affirm I am a Republican)  
 Alan Svehaug REP  
(I affirm I am a Republican)

**Precinct Committee Officer**  
**Precinct 673**  
Vote For One  
 Andrew Brewer DEM  
(I affirm I am a Democrat)  
 Mike Pond DEM  
(I affirm I am a Democrat)

**Precinct Committee Officer**  
**Precinct 674**  
Vote For One  
 Yvonne P. Behrens DEM  
(I affirm I am a Democrat)  
 Merridy McDaniel DEM  
(I affirm I am a Democrat)

**Precinct Committee Officer**  
**Precinct 675**  
Vote For One  
 Tom Sharples REP  
(I affirm I am a Republican)  
 Mario Raia REP  
(I affirm I am a Republican)

**Precinct Committee Officer**  
**Precinct 678**  
Vote For One  
 Dan Barnes REP  
(I affirm I am a Republican)  
 Dominek J. Trono REP  
(I affirm I am a Republican)

**Precinct Committee Officer**  
**Precinct 688**  
Vote For One  
 Marjorie Austen REP  
(I affirm I am a Republican)  
 John Blom REP  
(I affirm I am a Republican)

**Sample Ballot**  
**Primary and Special Election**  
**August 07, 2018**

**Clark County, Washington**

**Precinct *SAMPLE***

**Precinct Committee Officer**  
**Precinct 689**  
**Vote For One**  
 Terri Niles DEM  
(I affirm I am a Democrat)  
 Cheryl Aichele DEM  
(I affirm I am a Democrat)

**Precinct Committee Officer**  
**Precinct 912**  
**Vote For One**  
 Katja Delavar REP  
(I affirm I am a Republican)  
 Stac A. Boyd REP  
(I affirm I am a Republican)

**Precinct Committee Officer**  
**Precinct 951**  
**Vote For One**  
 Robert Campbell REP  
(I affirm I am a Republican)  
 Marilyn Roggenkamp REP  
(I affirm I am a Republican)  
 Thomas Gibson DEM  
(I affirm I am a Democrat)  
 Veronica Child DEM  
(I affirm I am a Democrat)

**Precinct Committee Officer**  
**Precinct 690**  
**Vote For One**  
 Johnny Winningham DEM  
(I affirm I am a Democrat)  
 Henriette D. Burns DEM  
(I affirm I am a Democrat)

**Precinct Committee Officer**  
**Precinct 914**  
**Vote For One**  
 Brent D. Boger REP  
(I affirm I am a Republican)  
 Connie Jo Freeman REP  
(I affirm I am a Republican)

**Precinct Committee Officer**  
**Precinct 965**  
**Vote For One**  
 John Ley REP  
(I affirm I am a Republican)  
 Jennifer McDaniel REP  
(I affirm I am a Republican)

**Precinct Committee Officer**  
**Precinct 692**  
**Vote For One**  
 Sean Emerson REP  
(I affirm I am a Republican)  
 Carolyn M Simpson REP  
(I affirm I am a Republican)

**Precinct Committee Officer**  
**Precinct 925**  
**Vote For One**  
 Michael J. Pattullo REP  
(I affirm I am a Republican)  
 Chuck Miller REP  
(I affirm I am a Republican)

**Precinct Committee Officer**  
**Precinct 968**  
**Vote For One**  
 James P. Rogers REP  
(I affirm I am a Republican)  
 Margaret Ann MacPherson REP  
(I affirm I am a Republican)

**Precinct Committee Officer**  
**Precinct 697**  
**Vote For One**  
 Audrey Mattoon DEM  
(I affirm I am a Democrat)  
 Carlos Palacio DEM  
(I affirm I am a Democrat)

**Precinct Committee Officer**  
**Precinct 935**  
**Vote For One**  
 Katharine Cotrell DEM  
(I affirm I am a Democrat)  
 Dorothy Weissert DEM  
(I affirm I am a Democrat)

**End of Ballot**

**Precinct Committee Officer**  
**Precinct 698**  
**Vote For One**  
 Steve McAllister REP  
(I affirm I am a Republican)  
 Robert C. Moon REP  
(I affirm I am a Republican)

**Precinct Committee Officer**  
**Precinct 940**  
**Vote For One**  
 Stacie Jesser REP  
(I affirm I am a Republican)  
 Glenn Kincaid REP  
(I affirm I am a Republican)

**Precinct Committee Officer**  
**Precinct 699**  
**Vote For One**  
 Starr A. Durand DEM  
(I affirm I am a Democrat)  
 Jamie Hurly DEM  
(I affirm I am a Democrat)  
 John Kowalski DEM  
(I affirm I am a Democrat)

**Precinct Committee Officer**  
**Precinct 950**  
**Vote For One**  
 Craig Feller REP  
(I affirm I am a Republican)  
 Jacinta Cox REP  
(I affirm I am a Republican)

Sample Ballot42003000700079

000000001102

Sample Ballot

2833031277



000000001393

**Sample Ballot**42003000800086



This page intentionally left blank



2833031277

**Sample Ballot**