

Clark County Official Local

Voters' Pamphlet

August 5, 2014 Primary Election



Published by the Clark County Auditor's Office

Auditor's letter

Dear Clark County Voter,

Welcome to the 2014 Primary Voters' Pamphlet.

To make sure you receive your ballot, it is necessary that you keep your address current with the Elections Office. We instruct the U.S. Postal Service to not forward ballots. If you need to update your address, you may call us at (360) 397-2345, or go online at www.clarkvotes.org.

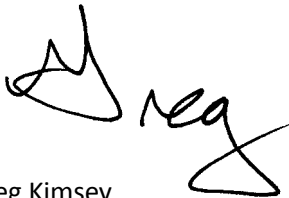
You may choose to return your voted ballot to the Elections Office by mail or by delivering it to one of the 33 secure, staffed ballot drop-off boxes that will be located throughout the county on the day of the primary. The ballot drop-off box locations are on page 10 of this voters' pamphlet.

In addition, there is a "drive-up" ballot collection box located in downtown Vancouver, one block east of Franklin in the center of 14th Street, approximately one block from the Elections Department. This drive-up ballot box will be available beginning on Wednesday, July 16.

If you are a registered voter and have not received your primary ballot in the mail by Friday, July 25, please contact the Elections Department for a replacement ballot.

I urge you to read this pamphlet but to also seek out more information. Democracy works best when citizens participate in the collective decision making process. I hope you will join in by casting your ballot in the Primary Election on August 5, 2014. Every vote counts!

Sincerely,



Greg Kimsey
Clark County Auditor

Contents

A reminder to vote

3

Be an informed voter. Here's how.

3

Top 2 Primary Information

4-7

Voting instructions

8

Accessible voting

9

Ballot deposit site locations

10

Candidate statements

11-25

Ballot measures

26-31

Participating jurisdictions – 3rd Congressional District; Clark County; 14th Legislative District; 17th Legislative District; 18th Legislative District; 20th Legislative District; 49th Legislative District; Clark County Commissioner District No. 3; Public Utility District No. 1 of Clark County District No. 3; Town of Yacolt; Emergency Medical Service District No. 1

Cover photo: Farmland in Clark County.

A reminder to vote

Registering to vote

Registering takes only a few minutes, and you may do it by mail or online at <http://clarkvotes.org>.

MyVote
register to vote | my voting information

You must complete a voter registration form if you are registering for the first time in Washington or if you moved to a new county. If you have moved within the same county, you may complete a new form or contact the Elections Department by mail, email or phone. Registration forms are available during business hours at public libraries, schools when they are open, city and town halls, and the County Elections Department.

Who is eligible to vote?

The requirements for registering to vote are simple. You must be a United States citizen, 18 years or older on August 5, and live in Clark County 30 days prior to the election.

How to vote

Clark County voters will receive their ballots by mail. If you are a registered voter in Clark County, we will mail you a ballot for every election in which you are entitled to participate.

The page **Voting instructions** (Page 8) in this pamphlet explains how to vote using the Clark County voting process. Please read the instructions in this pamphlet. We want your vote to count!

Lost or damaged ballot?

If you lose your ballot, or it becomes damaged, you can obtain a replacement ballot by contacting the Elections Department.

Phone: (360) 397-2345

Email: elections@clark.wa.gov

Mailing address: PO Box 8815, Vancouver, WA 98666-8815

Street address: 1408 Franklin Street, Vancouver, WA 98660

Speech to speech relay: (800) 833-6384

Be an informed voter. Here's how.

There are many sources of information for citizens wishing to know more about candidates, issues, and coverage of the upcoming August 5 primary and special election.

Read all about it

- **The Columbian**
www.columbian.com
- **The Oregonian**
www.oregonlive.com/elections/
- **The Camas/Washougal Post Record**
www.camaspstrecord.com
- **The Reflector**
www.thereflector.com



League of Women Voters

For a schedule of events or candidate forums, see their website at www.washingtonvoter.org or call (360) 693-9966.

Watch cable TV

CVTV Clark-Vancouver Television on Comcast cable channels 21 and 23. Election coverage will include candidate forums and interviews of candidates in various races. See TV listings in *The Columbian*, cable channel 2, and the CVTV website, www.cvtv.org or call (360) 696-8233.

If you do not have cable TV you can obtain video tapes of any program from CVTV.



Look online



- Election coverage can be found on the Clark County Elections Department website at <http://clarkvotes.org>.
- The Fort Vancouver Regional Library has computers with Internet connections available for public use.

Top 2 Primary sample ballot

Vote Both Sides

<p>OFFICIAL BALLOT PRIMARY AND SPECIAL ELECTION August 5, 2014</p>	<p>CLARK COUNTY, WASHINGTON Precinct 448</p>
<div style="background-color: black; color: white; padding: 10px; text-align: center; font-weight: bold; font-size: 1.2em;">INSTRUCTIONS</div> <p>MAKE SURE YOUR VOTE COUNTS by reading the voting instructions below and those printed on the other materials in your ballot packet.</p> <p>VOTING INSTRUCTIONS:</p> <ol style="list-style-type: none"> 1) Your ballot must be voted in secret and shown to no one. 2) Use a black or blue ink pen to mark your ballot by completely filling in the box to the left of your choices. 3) VOTE FOR ONLY ONE CHOICE FOR EACH OFFICE OR BALLOT MEASURE. Unless specifically allowed by law, more than one vote for an office or ballot measure will be an overvote and no votes for that office or ballot measure will be counted. 4) To vote for a person not appearing on the ballot, completely fill in the box to the left of the "Write-in" choice and use the line provided for their name. Write-in votes cast for Precinct Committee Officer should include the candidate's political party. 5) IF YOU MAKE A MISTAKE WHEN VOTING, completely cross out the name of the candidate or choice you do not want. You then have the option of making another choice. 	<p>READ: Each candidate for partisan office may state a political party that he or she prefers. A candidate's preference does not imply that the candidate is nominated or endorsed by the party, or that the party approves of or associates with that candidate.</p>
<div style="background-color: black; color: white; padding: 5px; text-align: center; font-weight: bold; font-size: 0.9em;">FEDERAL PARTISAN OFFICES</div> <p>U.S. SENATOR VOTE FOR ONE</p> <p><input type="checkbox"/> Candidate A (Prefers G.O.P. Party)</p> <p><input type="checkbox"/> Candidate B (Prefers Reform Party)</p> <p><input type="checkbox"/> Candidate C (Prefers Democratic Party)</p> <p><input type="checkbox"/> Candidate D (Prefers Green Party)</p> <p><input type="checkbox"/> Candidate E (Prefers Republican Party)</p> <p><input type="checkbox"/> Candidate F (Prefers Democratic Party)</p> <p><input type="checkbox"/> Candidate G (Prefers Republican Party)</p> <p><input type="checkbox"/> Write-in</p>	<p>U.S. REPRESENTATIVE 3RD CONGRESSIONAL DISTRICT VOTE FOR ONE</p> <p><input type="checkbox"/> Candidate A (Prefers G.O.P. Party)</p> <p><input type="checkbox"/> Candidate B (Prefers Reform Party)</p> <p><input type="checkbox"/> Candidate C (Prefers Democratic Party)</p> <p><input type="checkbox"/> Candidate D (Prefers Green Party)</p> <p><input type="checkbox"/> Candidate E (Prefers Republican Party)</p> <p><input type="checkbox"/> Candidate F (Prefers Democratic Party)</p>
<div style="border: 1px solid black; padding: 5px;"> </div>	<p>STA 18T POS VOT</p> <p><input type="checkbox"/> Candidate C (Prefers Democratic Party)</p> <p><input type="checkbox"/> Candidate D (Prefers Green Party)</p> <p><input type="checkbox"/> Candidate E (Prefers Republican Party)</p> <p><input type="checkbox"/> Candidate F (Prefers Democratic Party)</p> <p><input type="checkbox"/> Candidate G (Prefers Republican Party)</p> <p><input type="checkbox"/> Write-in</p>

.....

This sample ballot is representative of the official ballot that voters will receive for the primary. Please note the instructions for both the partisan offices and the Precinct Committee Officer, if applicable to your ballot. The following three pages address many questions about the Top 2 Primary.

.....

Test Ballot

Top 2 Primary FAQs

What does this mean for voters?

In August 2014, the state will conduct a Top 2 Primary. Voters will not have to pick a party and will be able to choose among all candidates for each office. In each race, the two candidates with the most votes will advance to the general election.

What is a Top 2 Primary?

A Top 2 Primary allows voters to choose among all candidates running for each office. Voters do not have to declare a party affiliation in order to vote in the primary.

Candidates for partisan office may state a preference for a political party, which is listed on the ballot. Candidates do not have to be supported, nominated or endorsed by that party. The two candidates who receive the most votes in the primary qualify for the general election. Candidates must also receive at least 1 percent of the votes cast in that race in order to advance to the general election.

What does the candidate's "party preference" mean in a Top 2 Primary?

Each candidate for partisan office may state a political party that he or she prefers. A candidate's preference does not imply that the candidate is nominated or endorsed by the party, or that the party approves of or associates with that candidate.

How did the Top 2 Primary become law?

The Top 2 Primary was passed by the people in 2004 as an initiative. I-872 passed by almost 60 percent.

What happened after I-872 passed?

In May 2005, the state Democratic, Republican and Libertarian parties sued in federal court to prevent its implementation. The political parties argued that the Top 2 Primary system violated their right to free association.

The federal District Court agreed with them and issued an order in July 2005 prohibiting the state from implementing the Top 2 Primary. The state appealed, but the Court of Appeals also agreed with the parties in an order issued in 2006. The state appealed to the U.S. Supreme Court.

What did the U.S. Supreme Court decide?

The court upheld the constitutionality of I-872. The Supreme Court reasoned that, since this form of primary has never been used, the political parties' challenge was based on assumptions. The court decided that it would not nullify the vote of the people based on speculation.

Could a race in the general election include two candidates who prefer the same party?

Yes. The candidates in each race who advance to the general election will be the two who receive the most votes in the primary. It is possible that both candidates who advance to the general election prefer the same party.

Can a voter still write-in a candidate?

Yes. Each race on the ballot, except Precinct Committee Officer, will still have a write-in line and you can write in the name of a candidate.

What offices are affected?

The Top 2 Primary applies to elections for all partisan offices and all nonpartisan races where three or more candidates have filed for the same office.

The Top 2 Primary does not apply to elections for U.S. President or Vice President.

Does the U.S. Supreme Court opinion impact the presidential primary?

No. The Top 2 Primary is for local, state and congressional races. The presidential primary is a separate system that only applies to nominating candidates for president, and how the major parties allocate their delegates to the national conventions. The relevant statutes are RCW 29A.56.010 through RCW 29A.56.060.

Where can I find more information about the Top 2 Primary?

The Secretary of State's Office posts information about Initiative 872, the administrative rules to implement Initiative 872, and the court documents in the legal challenge on its website at:

https://wei.sos.wa.gov/agency/osos/en/voters/pages/top_2_primary.aspx

What does this mean for candidates?

Candidates must still file a declaration of candidacy with the County Auditor or the Secretary of State, depending on the office. Candidates will be allowed to state on the declaration of candidacy which political party they prefer, and that information will be listed on the ballot.

This is strictly an expression of that candidate's preference. It does not imply that the candidate is nominated or endorsed by the party, or that the party approves of or associates with that candidate. For purposes of conducting elections, people running for office are not members of a particular party or candidates of a particular party. Rather, they are candidates running for office, and are provided the opportunity to express a preference for a political party.

Are minor party candidates still required to conduct conventions and collect signatures in order to run for office?

No. All candidates use the same procedures to file for office and appear on the primary ballot. The Top 2 Primary evens the playing field for candidates. Candidates may list any party as the party that they prefer.

Minor party and independent candidates for President and Vice President are an exception. They must still collect signatures and obtain the consent of the candidates.

Can the political parties prevent a candidate from expressing a preference for their party?

No. Candidates are permitted to express a preference for any political party. The court ruled that the ability of candidates to express a preference for a party does not severely burden the rights of the party.

Can the political parties still nominate candidates?

Yes. State law no longer dictates how political parties conduct their nominations. Now, the state and local parties decide how to conduct their nominations. The rules for party-run nominations vary party to party, and even between the state and local parties. Political parties can nominate multiple candidates for the same race. The court stated:

Whether parties nominate their own candidates outside the state-run primary is simply irrelevant. In fact, parties may now nominate candidates by whatever mechanism they choose because I-872 repealed Washington's prior regulations governing party nominations.

What about Precinct Committee Officer positions?

Your primary ballot may include the names of candidates for Precinct Committee Officer. Precinct Committee Officers are officials of the Democratic and Republican parties.

Officers are being elected in the Aug. 5 primary. Candidates will not appear on the general election ballot.

The only Precinct Committee Officers whose names appear on the primary ballot are those in races with two or more candidates of the same party in the same precinct. If only one candidate in either the Democratic or Republican party files in a precinct, that person is deemed elected to the office and their name will not appear on the ballot. Write-in votes for Precinct Committee Officers are not accepted.

Can the political parties demand that their nominees be distinguished on the ballot?

No. The law does not allow nominations or endorsements by interest groups, political action committees, political parties, labor unions, editorial boards, or other private organizations to be printed on the ballot.

The Supreme Court ruled the political parties do not have a constitutional right to have their nominees distinguished on the ballot. The Supreme Court said:

“It is true that parties may no longer indicate their nominees on the ballot, but that is unexceptionable: The First Amendment does not give political parties a right to have their nominees designated as such on the ballot. ... Parties do not gain such a right simply because the state affords candidates the opportunity to indicate their party preference on the ballot. ‘Ballots serve primarily to elect candidates, not as forums for political expression.’”

Can candidates advertise themselves as nominees of a political party?

Yes. Candidates can promote themselves in voters’ pamphlets, advertisements, and other forums as the nominees of a political party.

After candidate filing week, can a major party fill vacancies on the major party ticket?

No. This process was specifically repealed in I-872 because there is no major party ticket in a Top 2 Primary. All candidates are treated the same.

A race will only be reopened for a special filing period if there is a void in candidacy, meaning no candidates filed during the regular filing period.

If only one or two candidates file, will that race skip the primary and only appear on the general election ballot?

No. Even if only one or two candidates file for a partisan office, that race will still appear in the primary. It is only in nonpartisan and judicial elections that the race skips the primary when just one or two candidates file. The relevant statute is RCW 29A.52.220.

If a candidate for partisan office who was one of the top two vote-getters in the primary dies or is disqualified before the general election, will the party be allowed to name a replacement?

No. In a Top 2 Primary, a candidate’s party preference is purely for informational purposes and does not play any role in the administration of the election. Because the candidates are not representatives or nominees of a political party, a party is not allowed to name a replacement candidate. The laws that previously allowed the political parties to replace deceased or disqualified candidates were repealed in I-872.



Ballot drop box on W 14th and Esther streets, Vancouver

Voting instructions

Your ballot packet will be mailed to you about 20 days before the August 5 primary. It will contain:

- An instruction sheet that explains the voting process.
- The official ballot where you will mark your choices.
- A yellow secrecy envelope with instructions printed on it.
- A return affidavit envelope with a green stripe that is addressed to the County Auditor.

To make sure your vote is counted please follow the steps below when you receive your ballot package.

- 1 Read the following instructions** that explain how to vote in this election.
- 2 Read the ballot.** It contains all the races and ballot measures that you can vote.
- 3 Mark your ballot by completely filling in the box to the left of your choice with a black or blue ink pen.**

*Example:
Candidate 2 has been chosen in the city council race.
One candidate has been marked and the box is filled in completely.*

<input type="checkbox"/>	Write-in
LOCAL NONPARTISAN OFFICES	
CITY	
COUNCIL - POSITION NO. 6	
Nonpartisan	
Full Four Year Term	
VOTE FOR ONE	
<input type="checkbox"/>	Candidate 1
<input checked="" type="checkbox"/>	Candidate 2
<input type="checkbox"/>	Write-in

4 *Optional.* If you want to vote for a candidate not appearing on the ballot, completely fill in the box to the left of the Write-In choice and use the line provided.

5 **Check your ballot to be sure you have voted for all the candidates and measures you intended.** Make sure you voted for only one candidate in each race. If you vote for more than one candidate, your votes in that race will be rejected. Your other votes will be counted if they are done correctly.

If you make a mistake marking your ballot, draw a line through the entire candidate's name as shown below. You then have the option of making another choice.

Full Two Year Term	
VOTE FOR ONE	
<input checked="" type="checkbox"/>	Candidate D
<input checked="" type="checkbox"/>	Candidate E
<input type="checkbox"/>	Write-in

6 **Refold the ballot in the same way you received it and place it inside the yellow secrecy envelope.** Then seal it. Don't write on this envelope.

7 **Place the yellow secrecy envelope into the white affidavit envelope with the green stripe.**

8 **Read the declaration on the affidavit envelope, and then sign and date it.**

9 **Seal the envelope and put a first class stamp (49¢) on the envelope and mail it so it is postmarked no later than August 5.**

You may also deliver your envelope in person. Please see page 10 for information about ballot deposit locations.

If you need help, call the Elections Department at (360) 397-2345.

Accessible voting

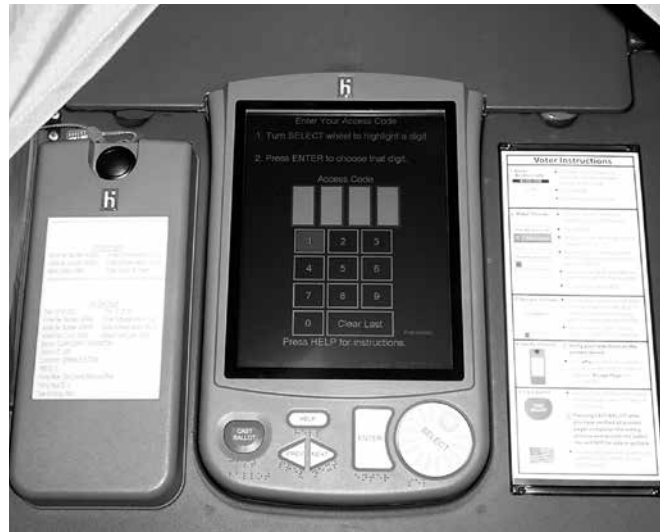
Using the eSlate

Clark County voters with disabilities have the option of casting a truly secret ballot using an accessible voting unit.

The eSlate accessible voting unit is a direct record electronic machine that allows voters with disabilities, including those who are blind, mobility impaired or lack upper-body dexterity, to vote privately and independently. The eSlate is in a booth that is wheelchair-accessible. The photos to the right are of the eSlate, encased in its booth.

Beginning 20 days before each election this accessible voting machine is available from 8 a.m. to 5 p.m. at the Clark County Elections Office, 1408 Franklin Street, Vancouver.

The elections department may be reached by taking C-Tran bus #25 Fruit Valley Route. You will be let off at Franklin Street and Mill Plain Blvd.



The photograph shows a close-up of the eSlate.

About the accessible eSlate

The eSlate is accessible in six ways starting July 16.

- For those who cannot operate the eSlate using the buttons and wheel, special interface devices are available as shown here.
- For those who cannot see or read the eSlate screen, use the headphones with volume control to hear the ballot.



The accessible eSlate unit is in a wheelchair-accessible booth.

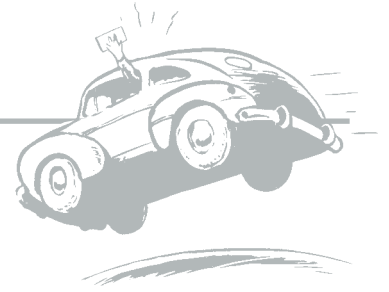
If you are not in a chair but need to sit while voting, a chair can be used with the special booth.

Accessible features

- (A) Those who are blind, visually impaired, or have difficulty reading can listen to the ballot. The SELECT wheel is the trigger to the audio. Turning clockwise moves the listener through the ballot. To hear something repeated, turn the SELECT wheel counterclockwise.
 - Those using hearing aids with a telecoil mode may use their neckloop rather than the headphones.
- (B) The RED jelly switch is the same as the SELECT wheel. The GREEN jelly switch is the same as the ENTER button.
- (C) Voters with quadriplegia can use their sip-n-puff to move through the ballot. Sip to move through the ballot. Puff to mark your choice.



Ballot deposit locations



If you wish to return your voted ballot in person before the primary, starting on July 16, take it to the:

■ **Clark County Elections Department**

1408 Franklin Street, Vancouver. 8 a.m. to 5 p.m. Monday through Friday.

If you lose your ballot or it becomes damaged, you can obtain a replacement ballot only at this location.

■ **Red permanent ballot drop box**

West 14th and Esther streets, Vancouver (one-half block east of the Elections Department). *Available 24 hours a day.*

Election Day is Tuesday, August 5, 2014. If you wish to return your voted ballot in person on Election Day take it to the red ballot drop box before 8 p.m.

In addition, election workers will be present to accept completed ballots **only** on Election Day from 7 a.m. to 8 p.m. at the following locations:

Clark County Elections Department

1408 Franklin Street, Vancouver

Battle Ground City Hall

109 SW 1st Street, Battle Ground

Battle Ground High School

300 W Main Street, Battle Ground

Burton Elementary School

14015 NE 28th Street, Vancouver

Chinook Elementary School

1900 NW Bliss Road, Vancouver

Dorothy Fox Elementary School

2623 NW Sierra Street, Camas

East Vancouver Community Church*

12415 SE 7th Street, Vancouver

Eleanor Roosevelt Elementary School

2921 Falk Road, Vancouver

Ellsworth Elementary School

512 SE Ellsworth Road, Vancouver

Felida Elementary School

2700 NW 119th Street, Vancouver

Fisher's Landing Elementary School

3800 SE Hiddenbrook Drive, Vancouver

Glenwood Heights Primary School

9716 NE 134th Street, Vancouver

Grace Foursquare Gospel Church

717 SE Everett Road, Camas

Hazel Dell Elementary School

511 NE Anderson Road, Vancouver

Helen Baller Elementary School

1954 NE Garfield Street, Camas

Hockinson Middle School

15916 NE 182nd Avenue, Brush Prairie

Image Elementary School

4400 NE 122nd Avenue, Vancouver

La Center Community Center

1000 E 4th Street, La Center

Lincoln Elementary School

4200 Daniels Street, Vancouver

M.L. King Elementary School

4801 Idaho Street, Vancouver

Mill Plain Elementary School

400 SE 164th Avenue, Vancouver

Minnehaha Elementary School

2800 NE 54th Street, Vancouver

Pleasant Valley School

14320 NE 50th Avenue, Vancouver

Prune Hill Elementary School

1601 NW Tidland Street, Camas

Ridgefield Nazarene Church

747 Pioneer Street, Ridgefield

Riverview Elementary School

12601 SE Riveridge Drive, Vancouver

Salmon Creek Elementary School

1601 NE 129th Street, Vancouver

Sarah J. Anderson Elementary School

2215 NE 104th Street, Vancouver

Sifton Elementary School

7301 NE 137th Avenue, Vancouver

Sunset Elementary School

9001 NE 95th Street, Vancouver

Walnut Grove Elementary School

6103 NE 72nd Avenue, Vancouver

Washougal Community Center

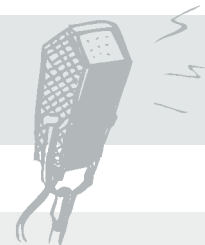
1681 C Street, Washougal

Yacolt Primary School

406 W Yacolt Road, Yacolt

* To be used during the Primary only.

Candidate statements



Federal Partisan Office

US Representative 3RD Congressional District



Bob Dingethal

Prefers Democratic Party

With 35 years' experience as a businessman, non-profit leader and community advocate, I am ready to be your voice in Congress.

Career politicians always talk about jobs. I have created hundreds of jobs. We need to grow the middle class and improve education. You can't build a strong economy when one-fifth of students don't finish high school.

I will work to make health care better and more

affordable, ensure equal pay for equal work, while protecting Social Security and Medicare.

I want all voices to be heard and will return to open Town Hall meetings with your vote.

Address: PO Box 668, Vancouver 98666

Phone: (360) 258-1631

Email: bob@bobdingethal.com

Website: www.bobdingethal.com

Facebook: facebook.com/bobforcongress

Twitter: @BobForCongress



Jaime Herrera Beutler

Prefers Republican Party

From day one, serving Southwest Washington families and communities has remained my mission in Congress.

Bringing jobs back to Southwest Washington is priority one. By removing red tape and barriers to job growth, I'm fighting to help our economy grow.

I'm making government accountable to you, taking quick action to keep government responsive to the people.

I'm hunting down government inefficiency to tackle our national debt. I'm protecting Social Security and Medicare, vital programs to our seniors.

No one will work harder for Southwest Washington than I will. I ask for your vote to keep serving you in Congress.

Address: PO Box 1614, Ridgefield 98642

Phone: (360) 597-3065

Email: Info@VoteJaime.com

Website: www.VoteJaime.com



Michael Delavar

Prefers Republican Party

I will vote to: empower the states and local school boards (by eliminating Common Core), protect our right to keep and bear arms, replace the current tax system with a flat tax, repeal Obamacare, lower healthcare costs, and allow people to buy insurance across state lines. We must: audit the Federal Reserve, end NSA spying on innocent Americans, and end foreign aid. My platform is simple: hold frequent town hall meetings, help constituents cut through red tape,

explain every vote, and vote constitutionally to protect life, liberty, and property. Anything beyond this is a waste of taxpayer dollars.

Address: PO Box 1255, Washougal 98671

Phone: (360) 771-4859

Email: elect@michaeldelavar.com

Website: www.michaeldelavar.com

Facebook: www.facebook.com/michaeldelavarcampaign

Twitter: www.twitter.com/michaeldelavar

State Partisan Office

State Representative 14TH Legislative District Position No. 1



Norm Johnson

Prefers Republican Party

It is truly an honor to serve the people of the 14th District. I have supported legislation in areas that I feel are most important; agriculture, business, education, public safety and care for the most vulnerable. As a former member of the United States Army, I am proud of a bill I sponsored that designates March 30

each year as "Welcome Home Vietnam Veterans' Day" in Washington. I will continue working hard as Ranking Republican on the Community Development, Housing and Tribal Affairs Committee. I also serve on the Education, Higher Education, Rules and Transportation Committees.

Phone: (509) 314-9668

Email: gales1978@hotmail.com

State Partisan Office

State Representative 14TH Legislative District Position No. 2



Ben Shoval

Prefers Republican Party

Our state is in real trouble. Taxes keep going up. Government continues getting bigger. Businesses are afraid to hire. Many of our neighbors are out of work. That's why I helped lead the effort last year to make it harder for the Yakima City Council to raise taxes.

I am running so I can go to Olympia and battle against higher taxes and bigger government.

We must reform state government, re-evaluate and prioritize programs, and use taxpayer dollars responsibly, remembering and respecting whose money it really is – yours – and how hard you work to earn it.

Address: 123 E. Yakima Avenue, Yakima 98901

Phone: (509) 494-3956

Email: ben@benshoval.com

Website: www.benshoval.com



Gina R. McCabe

Prefers Republican Party

I am a "Washington grown" resident asking for your vote to represent you at our Capitol. I have lived in this beautiful area for over 30 years. My voice is strong and clear. Born on a Washington State military base, I am family strong. Strengthening our families will result in a resilient community, better education, stronger business and greater public safety. I will fight for jobs,

economic development and finding the balance between employment and environmental issues. I have been blessed with my community, friends and family. I look forward giving back. Help me put the "represent," back in Representative.

Phone: (509) 250-0679

Email: electginamccabe@gmail.com

Website: electginamccabe.com



Adam Yoest

Prefers Republican Party

Adam's service to state and country is best exemplified through his career in the Washington National Guard. Adam has consistently served in leadership roles while deployed to combat zones. Adam's military decorations include the Purple Heart, Combat Action Badge and four Army Commendation Medals. Adam's over 12 years of service to the State and Our nation are indicative of

character traits beyond reproach and demonstrate a willingness to place the needs of others before his personal interests and safety. These proven character attributes will serve the people of the 14th District exceptionally; should they elect him to represent their concerns.

Phone: (509) 910-3524

Email: electadamyoest@gmail.com

Website: www.electadamyoest.org



Paul George

Prefers Democratic Party

I came to Yakima as a newspaperman, never dreaming that would become 25 years of community involvement including Mayor, chairman of the start-up Yakima Valley Visitors and Convention Bureau, promotion to sports editor, racetrack manager and a career in the pari-mutuel industry. I am proud to have served on the Advisory Board that broke ground on Yakima's

Convention Center and subsequent expansion. Other high points were funding and staffing the Sports Commission and work on the successful cable TV franchise vote. I now desire to serve Yakima in the Legislature and ask for your vote.

Address: PO Box 881, Yakima 98907

Phone: (509) 966-5097

Email: pgeorge@yakima.net

State Representative 17TH Legislative District Position No. 1



Lynda Wilson

Prefers Republican Party

“As a mom, grandmother and small business employer, I am concerned with the direction of our state government. Economic opportunity, job creation and quality of life comes from a strong and vibrant private sector, not from a government that spends too much, taxes too much, and regulates too much. Families need more and better jobs. Parents *deserve* more options in education.

Individuals need *real* healthcare solutions of *their* choice, fitting *their* needs, not government’s.

Know that I will always represent and work for *you*, not politicians, bureaucrats or ‘special interests.’ It will be an honor to serve you.” Vote Wilson!

Phone: (360) 608-4519

Email: Lynda@ElectLyndaWilson.com

Website: www.ElectLyndaWilson.com



Monica Stonier

Prefers Democratic Party

Government needs to get the basics right: good public schools; safe and healthy communities; streamlined regulations; a partner for business and job creation.

I was one of the only legislators to accept no pay during the special session and support no tax increases. It’s your money. We should spend it wisely or give it back. I’m a teacher by training and

one of few lawmakers with firsthand experience in the classroom. I fought in my first term to ensure schools are our top priority. We have made progress but there is more to do. I ask for your vote.

Address: Re-elect Monica Stonier, PO Box 872634, Vancouver 98687

Phone: (360) 901-2859

Email: info@votemonicastonier.com

Website: www.votemonicastonier.com

State Partisan Office

State Representative 17TH Legislative District Position No. 2



Richard McCluskey

Prefers Democratic Party

As your representative I'll work to grow living wage jobs right here at home. The kind of jobs that build great families, successful businesses, a healthy environment, and a vibrant community.

Every child deserves a great education, I'll uphold the highest standards in K-12 education, our greatest responsibility and our most noble endeavor.

I'll strive to promote effective and efficient

public services that benefit all and assure that our transportation infrastructure is at its best.

I will remain accessible and responsive to your needs and your requests so that you too have a strong and constant voice in Olympia.

Address: McCluskey for State Rep., PO Box 872514, Vancouver 98687

Phone: (360) 896-1717

Email: richard@mccluskey17.com

Website: www.mccluskey17.com



Paul Harris

Prefers Republican Party

Vote for Paul Harris and let's "Get Washington Working." Unshackle businesses from excessive regulations, taxes and fees allowing economic progress and job creation. Fund education first and fully with a stand-alone budget. Education is the primary duty of the state and should not be dependent on tax increases. The Affordable Health

Care Act is broken. Steps need to be taken to *truly* make health care affordable for everyone. Our state budget is balanced. We need to limit spending and not raise taxes. Paul's proposals will work for you and for Clark County. Vote for Paul Harris.

Phone: (360) 553-2748

Email: electpaulharris@gmail.com

Website: electharris.com



Chris Rockhold

Prefers Libertarian Party

I believe in liberty. I believe the primary function of government should be to protect your liberties, not rob you of them. I believe in the right to own property, not just land and buildings, but all of the fruits of your labor. Government should protect these rights, not strip them from you. I believe our schools should teach more than just facts and figures, they need to also encourage

students to grow and thrive as individuals, not create generations of test takers. I believe you know what's best for you, not your government. I ask for your vote.

Address: 12004 NE Fourth Plain Road #D541, Vancouver 98682

Phone: (360) 903-0316

Email: Chrisrockhold2014@gmail.com

Website: ChrisRockhold.com

State Representative 18TH Legislative District Position No. 1



John Ley

Prefers Republican Party

Elect me and send a stronger team to Olympia. My focus: Empower businesses to create jobs, remove government obstacles so people and business can thrive. You keep more of *your* money.

We need local control of education dollars, not a one-size fits all, top-down approach. Our children deserve quality public education.

We need more accountability and reform of state agencies spending your money.

I'm a veteran, commercial airline captain, and small business owner.

I have the stamina, discipline and maturity to serve you. My priorities mirror yours: spend wisely, live within your means, and save for the future.

Address: Elect John Ley, PO Box 874073, Vancouver 98687

Phone: (360) 254-6225

Email: john@johnley.us

Website: www.johnley.us

Facebook: Elect John Ley



Mike Briggs

Prefers Democratic Party

When elected, I will represent *everyone*.

Olympia needs new people with business experience, a mature reasonable outlook, and who will negotiate across the aisle to move our state *forward*. Education is *not an expense* - it's our investment in the future. We need a realistic transportation plan to enable business and our environment to grow safely and prosper. I'll work hard to make education, transportation, and the

environment a priority for our state and future. I proudly served our country in the Navy, retired from a successful career in the lumber industry, and will proudly serve you as your representative.

Address: Mike Briggs For State Rep, PO Box 413, Camas 98607

Cell Phone: (206) 940-3590

Email: briggs4rep@gmail.com

Website: www.briggs4rep.com



Brandon Vick

Prefers Republican Party

Representative Brandon Vick has earned a reputation as an effective legislator who works hard to ensure the voice of the people in the 18th District is heard. Brandon has been widely recognized for his dedication, trustworthiness, and ability to thrive as a team player – earning the responsibility to serve on six committees – more than any other legislator.

Brandon is focused on making sure education is

funded first, Washington balances its budget, and that we have an environment where businesses build and thrive – creating family-wage jobs and putting Washington back to work.

Please vote to keep Brandon Vick working for you!

Address: PO Box 1434, Battle Ground 98604

Phone: (360) 609-4363

Email: Brandon@ElectBrandonVick.com

Website: www.ReElectBrandonVick.com

State Partisan Office

State Representative 18TH Legislative District Position No. 2



Liz Pike

Prefers Republican Party

Stopping the CRC was Job One. Now we must solve our cross-river transportation needs without allowing light rail into Clark County. Additional bridges will do that.

We must prioritize and control spending, lower taxes, and reduce job-killing regulations. Our children deserve the best so we must fund education first *without* raising taxes.

Raised on a Brush Prairie dairy farm, I know what hard work means. As a business owner, I

know job creation is what's needed for a healthy economy. I provide leadership, integrity, courage, and solutions for a brighter future. It's an honor to serve you.

Vote for Liz!

Address: Friends to Elect Liz Pike, PO Box 662, Camas 98607

Phone: (360) 281-8720

Email: ElectLizPike@comcast.net

Website: <http://LizPike.us>

Facebook: Liz Pike



Maureen Winningham

Prefers Democratic Party

A businesswoman, mom of a public school student, and longtime Clark County resident, Maureen will bring independent leadership to a gridlocked legislature. A collaborator with fresh ideas and 20 years executive experience in Fortune 500 companies, Maureen knows what it takes to create a thriving local economy. She will fight for strong business conditions and a skilled

and competitive workforce. No stranger to hard work, Maureen understands the struggles that seniors and families face – education, job security and caring for multiple generations. As your legislator, she will move past the politics to fight for a stronger Middle Class!

Email: Campaign@maureenwinningham.com

Facebook: Elect Maureen Winningham

State Representative 20TH Legislative District Position No. 1



Richard DeBolt

Prefers G.O.P. Party

A native of Tacoma, Richard traveled extensively during his youth while his father served in the military. Richard and his wife, Amy, currently live in Chehalis. Amy is an elementary school teacher. They have a daughter, Sophie and a son, Austin.

Currently employed at TransAlta as communications and community relations

director, Richard DeBolt formerly was the director for the Centralia-Chehalis Chamber of Commerce.

Bringing strong community values to the Legislature, Richard DeBolt exemplifies leadership at our state's highest levels.

Phone: (360) 740-0266

Email: Michal.tankersley@icloud.com

Website: www.richarddebolt.com



Michael Savoca

States No Party Preference

If elected I'll donate half my salary to local charities. I will not accept campaign donations from lobbyists, corporations, or unions. No campaign contributions above \$5 will be accepted. We are in the fight of our lives to take back our country from billionaires and multi-national corporations, or our children will become serfs in the country our soldiers fought and died for.

Sixteen states have voted to overturn the US Supreme Court decision that put government up for sale to the highest bidder. Washington State must be next to demand a constitutional amendment restoring campaign finance reform.

Phone: (360) 446-2255

Email: masavoca@fairpoint.net

Website: michaelsavoca.com

State Partisan Office

State Representative 20TH Legislative District Position No. 2



Ed Orcutt

Prefers Republican Party

State Representative Ed Orcutt has earned a reputation in Olympia as an effective, independent leader who works hard to make things happen for the families in Southwest Washington. Ed is a leader in protecting natural resource-based jobs, property rights, hunting and fishing opportunities, and the quality of life we all enjoy.

Ed Orcutt's priorities include creating new

family-wage jobs, making government agencies more responsive to the citizens they serve, and making government live within its means. That means funding education and vital services using existing revenues. Let's keep Ed Orcutt working for us as our state representative.

Phone: (360) 751-2317

Email: ElectEdOrcutt@kalama.com

Website: repedorcutt.com



John Morgan

Prefers Republican Party

We need a change in Government to restore our Liberties and our Government to the People. We need to change the people in Government, With the Values that made Our Country great, Courage, Truth, Justice, Liberty; With a firm resolve to make Tomorrow better, not just for Ourselves, but for Our Children. The CAFR Funds should be used to benefit all the People, not just a select few. We

must bring these Funds out of the Shadows and into the Light. There are similarities of Politicians and diapers: They both need to be changed and for the same reason.

Phone: (360) 701-1299

Email: electjohnmorgan@gmail.com

Website: electjohnmorgan.com

State Partisan Office

State Representative **49TH Legislative District** Position No. 1



Sharon Wylie

Prefers Democratic Party

I am proud to serve as your representative. My family is deeply involved in our community and believes that public service is an honor. Despite challenges, I am proud of progress closing tax loopholes, making higher education more accessible and affordable, and using my management consulting experience to make government more efficient. Another \$1 billion

invested in best practices strengthened our commitment to our kids. Together we can create a stronger economy, make our tax system more just, and protect our vulnerable people. Contact me at 1-360-901-8551 or Campaign@sharonfor49th.com

Phone: (360) 901-8551

Email: Campaign@sharonfor49th.com

Website: www.sharonfor49th.com



Anson Service

Prefers Republican Party

I am a Doctor of Clinical Psychology, leader, educator, business owner, and family man. My expertise in education, research, communication, and negotiation make me the *better, sensible choice* over politicians who vote to raise taxes, hurt businesses, and support wasteful spending. My bipartisan style is vital to eliminate waste, fully fund our schools, and serve all children *without raising taxes*. I created the "100% Vancouver"

program to boost businesses to take back millions of our dollars spent on Oregon's economy. I *advocate for elderly and vulnerable citizens*, helping citizens of *all ages and abilities* to thrive.

Address: Elect Dr. Anson Service Campaign Headquarters, 205 E. 11th Street, Suite LL1, Vancouver 98660

Phone: (360) 735-7330

Email: anson@electansonservice.com

Website: www.electansonservice.com



Scott Dalesandro

States No Party Preference

Our region has a promising future, but we need the vision and the leadership to take that next step. We need independent thinkers and people who aren't afraid to "do the right thing" regardless of influence peddlers. No more status quo, "lead, follow or get out of the way." The current political

parties care more about their legacies than they do about you. I care about this community and the legacy that we leave to my granddaughters. Allow me to work for you.

Email: Scott@HireScott49.com

Website: HireScott49.com

State Representative 49TH Legislative District Position No. 2



Lisa Ross

Prefers Republican Party

A CPA and MBA, I have shown leadership in retail grocery, nonprofit, mental health, transportation and government, including being a vested union member.

My goal is a brighter future in Vancouver for employees *and* employers - without projects like the CRC that don't solve the problem and are too expensive and wasteful. We voters repeatedly have chosen fiscal restraint and common sense measures that align with my values. *It is time to*

vote for someone who will truly represent you - regardless of party. I am a professional problem solver with integrity who will never break your trust.

Choose more.

Address: Select Lisa Ross, PO Box 65182, Vancouver 98665
Phone: (360) 624-8339
Website: www.SelectLisaRoss.com
Facebook: Lisa Ross for 49th



Jim Moeller

Prefers Democratic Party

Washington State belongs to us, not the lobbyists. As your state representative I am fighting to shine a light on currently concealed political spending, including from out of state interest groups. The economic recovery must include all citizens. That means attracting new jobs, new investment and new ideas through holding fast to our values: protecting the vulnerable, excellence in education, affordable, local and accessible college, health

care, opportunity for all, fiscal discipline and a commitment to a special quality of life we treasure. Together we can build a better Washington and Vancouver for our families and the future.

Address: The Committee to Elect Jim Moeller, 1701 Broadway Street #328, Vancouver 98663
Phone: (360) 904-3377
Email: electjim@jimmoeller.org
Website: www.jimmoeller.org



Carolyn Crain

Prefers Republican Party

As a decade long advocate for our rights, both locally and in Olympia, I will continue working hard to protect them. Funding education first, protecting programs for vulnerable citizens, developing fiscally sustainable budget reforms, while bringing new infrastructure and a better bridge solution to Vancouver are my priorities. As a business friendly and economic stimulating futuristic thinker I'll work to restore job opportunities here in Vancouver.

Loss of the 2/3rds majority vote law in court blocked our right to control government spending! I'll work to protect you from tax increase plans returning respect for the people's vote to Olympia.

Address: 5917 NE 47th Street, Vancouver 98661
Cell Phone: (503) 984-5659
Email: voteCarolynCrain@comcast.net
Website: www.voteCarolyn.us

County Partisan Office

Clark County Assessor



Darren S. Wertz

States No Party Preference

For the past eleven years I've worked with County Board of Equalization helping property owners get their assessed property values corrected.

I am an army veteran with a master's degree in Economics, was Economist for PUD for 11 years, serve on Ridgefield City Council but most importantly have been a property owner in Clark County for over 30 years and believe strongly in

property rights and fair taxation.

I know State Code and have advanced technical appraisal training through IAAO and AI.

It's time to have an assessor that's for the property owner. Please hire me. Vote *Wertz*.

Thank you.

Address: PO Box 1676, Ridgefield 98642

Email: WertzCares@gmail.com

Website: www.WertzForAssessor.com



Peter Van Nortwick

Prefers Republican Party

It is an honor to be your Assessor. In my term, we introduced a culture of continuous improvement. As a result, we eliminated the office's back logs and began meeting our statutory deadlines.

In addition, we drastically lowered the cost of government reducing our spending by 21% since 2009 and returned \$632,000 to the general fund.

In the current budget, we took a voluntary budget decrease and are on track to return over \$1.2 Million to the general fund. *Better Government, Faster Service* and leaving Clark County financially *Stronger* is my goal. If you like results, vote for a Re-Pete.

Phone: (360) 907-4413

Email: Friendsofpeterwannortwick@gmail.com

County Partisan Office

Clark County Auditor



Greg Kimsey

Prefers Republican Party

It has been a great privilege to serve as your County Auditor these past 16 years.

Accomplishments include: *improved integrity of elections process; conducted numerous performance audits ensuring tax dollars are used efficiently and effectively; Washington State Auditor of the Year; national awards for financial reporting.*

My commitment is to provide the highest

possible level of service to "customers" of the Auditor's Office.

I have been, and will continue to be, an advocate for taxpayers in county government.

I appreciate the confidence voters have had in me. I hope you will honor me with your vote this year.

Phone: (360) 521-6685

Email: gkimsey@comcast.net

Website: www.GregKimsey.com

Clark County Clerk



Deanna Pauli-Hammond

Prefers Democratic Party

The County Clerk's office is an integral part of the superior court system that depends on accurate records. I bring 25 years' experience in Customer Service, Office, and Financial Records Management, with a proven record of passing state and federal audits.

I feel the focus of the Clerk's office is to build on technologies that expedite best practices, make public records accessible, reduce errors, and enable

clerks to provide the best possible service to the courts and the community. I would also work to find ways to help the public with limited resources utilize court services when they're needed.

Address: Deanna for County Clerk, 800 NE Tenney Road #110-425, Vancouver 98685

Phone: (360) 984-0345

Email: deannaforcountyclerk@gmail.com

Website: www.deanna4countyclerk.com



Scott G. Weber

Prefers Republican Party

It has been my honor to serve as your Clark County Clerk for the last four years. During my term, our office has made significant positive change, resulting in better, more responsive customer service. We have allowed for real-time public access to documents and electronic filing. Under my leadership, we are continuing this work. Ensuring that Washington State's court records are open

and accessible is the most essential function of the Clerk's Office, and I thank you for your support as we make constant, steady improvement. I am Scott Weber and I ask for your vote.

Address: Scott G. Weber, 15512 NE 87th Street, Vancouver 98682

Phone: (360) 253-3977

Email: friendsofscottweber@gmail.com

Website: Weber4Clerk.com

County Partisan Office

Clark County Commissioner District No. 3



Jeanne E. Stewart

Prefers Republican Party

Citizens First. – The Number 1 priority! It's what government should be about—above all else.

Let's work to move Clark County forward—demand safer transport of all hazardous materials traveling through our county; improve mental health services; preserve our neighborhoods; keep taxes under control through carefully prioritized spending; work with regional partners to expand economic development to create jobs; work with

cities for mutual benefit; help create an effective regional transportation plan including a third bridge without the financial burden of light rail; actively support C-Tran's flexible, affordable, functional bus service. I will always respectfully represent the Citizens of Clark County.

Address: Stewart for Clark County, PO Box 383, Vancouver 98666

Phone: (360) 695-5154

Email: stwjevanc@aol.com

Website: www.JeanneStewart.org



Craig Pridemore

Prefers Democratic Party

As a public finance manager, former Clark County Commissioner and State Senator, Craig Pridemore has the knowledge, skills and experience to be an effective champion of the citizens of Clark County from Day One. He has received the support and endorsements of community leaders from across the county. Craig will focus on restoring partnerships with community organizations;

ensuring county employees are working on behalf of citizens, not political ideologies; and on restoring fiscal accountability to county government. A US Army veteran, Craig has devoted his life to public service and to a positive, productive future for our community.

Address: Friends of Craig Pridemore, 1111 Main Street, Suite 400, Vancouver 98661

Website: www.CraigPridemore.com

County Partisan Office

Clark County **Prosecuting Attorney**



Josie Townsend

Prefers Republican Party

Positive Change is needed in the office of the Prosecutor. I have twenty years of experience as a New York State Trooper, thirteen years as a lawyer. I have served five years as a Hearings Officer for the Department of Licensing. I am the former City Prosecutor for the City of Vancouver. Vote for me - I can promise you that the office of the

Prosecutor will treat you with respect - whether you are the victim, the police, the offender, or opposing counsel. It is a privilege to be a public servant and I will remember that – always.

Phone: (360) 694-7601

Email: jctownsend@aol.com

Website: www.electjosie.com



Tony Golik

Prefers Democratic Party

It's been an honor to serve as your elected Prosecuting Attorney.

I've spent my entire career fighting for victims and families. I've personally prosecuted many of the most dangerous criminals in our community.

A few accomplishments: We opened our state's first Elder Justice Center; brought all local cities together to participate in our Children's Justice Center; and increased technological efficiency,

saving taxpayer dollars. I appreciate the confidence voters have in me. I would be honored to have your vote.

Trusted leaders in law enforcement endorse Tony Golik: Sheriff Garry Lucas, Chief Mitch Lackey, and retired Clark County Prosecutor Art Curtis.

Address: Citizens to Re-Elect Tony Golik for Prosecutor, PO Box 1390, Battle Ground 98604

Phone: (360) 356-6155

Website: www.electgolik.com

Clark County Sheriff



Shane Gardner

States No Party Preference

I'm Shane Gardner, Sheriff's Office Community Outreach Sergeant. Each day I make life safer and more secure for you while building relationships between the Sheriff's Office and our community – exactly what our Sheriff must do. I'm an Army veteran (Ranger) and hundreds who know my leadership skills endorse me: (www.ShaneGardner.com/endorsements).

As Sheriff, I'll lead our county into a modern, engaging, effective model of law enforcement.

I'm a nonpartisan candidate - when you call 911, we want to know your emergency, not your political affiliation. Partisan politics have no place in law enforcement.

I'm Shane Gardner and ask for your vote.

Address: 2400 SE 133rd Court, Vancouver 98683

Phone: (360) 892-6330

Email: Shane@ShaneGardner.com

Website: www.ShaneGardner.com

Campaign Facebook: Facebook.com/ShaneGardnerForSheriff

Personal Facebook: Facebook.com/TheGardnerFour



Ed Owens

Prefers Independent Party

Ever-present and involved in my community, I value diversity, mentoring youth, fostering bi-partisan partnerships. Nationally, I'm a proven safety advocate. As Sheriff, I will open the Sheriff's Office to citizen oversight, establish transparency and restore accountability, trust and responsiveness to the citizens and businesses. My 23-year career is about being in-service to others with fresh perspectives gained from multiple agencies. I'm the only candidate with executive experience leading and serving on the Clark County Law Enforcement Council. I'm a Retired Combat Veteran and First

Sergeant and I hold a Bachelor's Degree in Criminal Justice. I'm grateful for your vote!

Address: Ed Owens 4 Sheriff (I), PO Box 397, Battle Ground 98604; **Phone:** (360) 991-9665

Email: ed@edowens4sheriff.com

Website: www.edowens4sheriff.com

Facebook: www.facebook.com/EdOwens4Sheriff

Twitter: twitter.com/EdOwens4Sheriff

Instagram: instagram.com/edowens4sheriff/#

LinkedIn: www.linkedin.com/pub/ed-owens/28/4b7/547

Google+: plus.google.com/116714323665015304310/posts



John Graser

Prefers Republican Party

My reorganization plan will result in nearly 30 more deputies on patrol, reducing response times to your calls and emergencies. Using my plans to reduce the jail population will treat our mentally ill and addicted people more appropriately, reduce crime and save you money. Refocusing the work of the Drug Task Force will begin to reduce the flood of drugs on our streets and schools. Promoting diversity hiring will be of benefit to the entire

community. Your quality of life and safety is my primary concern. Responsible, mature leadership is essential for our future. Vote John Graser!

Address: 13023 NE Highway 99, Suite 7-152, Vancouver 98686

Phone: (360) 936-3850

Email: JohnGraser@comcast.net

Website: www.graserforsheriff.com



Chuck E. Atkins

Prefers Republican Party

Everyone should feel safe and secure in their neighborhoods while having confidence in those sworn to protect them. I believe in a tough but smart approach to fighting crime, long-term problem solving, and professional service with accountability. I have 35 years of experience as a deputy, K9 handler, sergeant, SWAT commander, precinct commander, assistant chief, and I'm a graduate of the FBI National Academy. Over 150 public safety

professionals endorse me for sheriff because they understand being sheriff is a tough job that requires experience, integrity, and leadership. I ask you to join them in supporting me for sheriff.

Phone: (360) 601-9019

Email: chuck@atkinsforsheriff.com

Website: www.atkinsforsheriff.com

Facebook: www.facebook.com/chuckatkinsforsheriff

County Partisan Office

Clark County Treasurer



Lauren Colas

Prefers Republican Party

If you deal with government entities, you've likely experienced frustration, delays, inefficiency and complacency. Can government really have reliable, cutting-edge technology, exceptional customer service, streamlined operations, plus cost savings? Absolutely! It depends on the leader. After 30 years, the time for this much needed transformation and new leadership in the Treasurer's office is now.

Lauren will lead as an effective Treasurer using her 25-year business career experience in Fortune 100, public accounting, and private companies. Well-qualified, highly educated, fresh energy and ideas, innovation over status quo – she can and will deliver. Real-world business experience matters.

Vote improvement. Vote Lauren Colas.

Email: Lauren@votelaurencolas.com

Website: www.votelaurencolas.com

Facebook: www.facebook.com/LColasCCTreasurer



Doug Lasher

Prefers Democratic Party

The position of County Treasurer is not about political rhetoric. It's about 30 years of hard work administering the law, which has earned Doug a stellar reputation as an innovative administrator, excellent manager, and vigilant caretaker of the public's monies.

Over the years, accomplishments include one-stop service center, shared Remittance Processing Center, electronic REET processing, and treasury web portal. Customer service is

Doug's priority.

Next year will be critical implementing a new POS cashiering system and upgrading the remittance processing equipment and software that enhances customer service and internal controls. Doug is honored by your continued trust, support, and vote.

Address: Citizens for Doug Lasher, PO Box 864, Vancouver 98666

Phone: (360) 576-9783

Email: citizensforlasher@msn.com

Website: www.votedouglassher.com

Public Utility District No.1 of Clark County **Commissioner** District No. 3



Michael Piper

Clark County PUD is an excellent organization. But we can do better! The PUD should take full advantage of all incentives to help create a more sustainable energy future for our region while keeping our rates low. I am interested in a utility that pursues an electrical infrastructure – that supports new emerging technologies and industry (electric vehicles, solar and wind, fuel cells, and

LEDs, etc.) As a lifelong environmentalist, my experience at the City of Vancouver and Clackamas County; and conservation work at BPA - working with over 100 public utilities makes me uniquely qualified to serve as your PUD Commissioner.

Address: 7915 NE Burton Road #L-107,
Vancouver 98662
Phone: (360) 600-3097



Bill Hughes

We have probably one of the finest PUDs in the country. I have seen them in action during fires, blizzards, floods and even a tornado or two. While it's hard to improve on perfection, sometimes a fresh face can bring a new idea or two.

I have no grandiose idea(s) but perhaps a few suggestions. I would be open to any suggestions

from any of our subscribers. My phone and email will be open and accessible to any and all PUD subscribers. If I can't resolve your problem, I will put you in touch with the people who can.

Address: 1204 NE 65th Street, Vancouver 98665
Phone: (360) 694-7352
Email: bhughes803@aol.com



Byron Hanke

During the past twelve years, as your elected representative on the Clark Public Utilities Board of Commissioners, my goal has been to bring knowledge, experience and a common sense approach to the ever increasing complexities of utility governance. With your support, my efforts during this next six year term will continue to be in the best interests of our customers.

I am a longtime supporter of the public power concept and understand the duties and responsibilities of the Commission. Stable rates, reliable service and financial integrity will head my list of priorities.

Address: 1429 SE Columbia Way, Vancouver 98661
Phone: (360) 904-7544 and (360) 694-9414



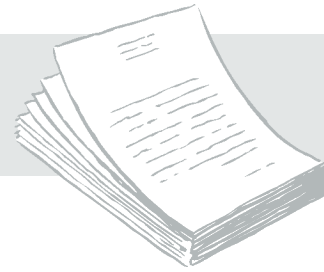
Jane Van Dyke

A proven customer advocate who is an effective, and engaged leader, vote for Jane Van Dyke to continue award-winning customer service, reliable power and water services, and low stable rates. Jane is connected to you through community leadership. Past and current activities: PUD commissioner, Columbia Land Trust founding board/president, Vancouver Sunrise Rotary president, Vancouver Lake Watershed Partnership, Washington State Bar Association, EOCF-Headstart, and Columbia

River Economic Development Council. The utility needs diversified power and an adequate water supply that encourages efficiencies, conservation, and renewables. Let Jane's skills, knowledge, and understanding lead the utility. Vote Jane Van Dyke!

Phone: (360) 904-3974
Email: jane@janevandyke.com
Website: JaneVanDyke.com
Facebook: ElectJaneVanDyke

Ballot measure



Town of Yacolt

Proposition No. 1

Emergency Medical Program Excess Levy

The Town Council, Town of Yacolt, Clark County, Washington, adopted Resolution No. 505, referring to the voters the proposition described herein. This proposition allows the electors of the Town of Yacolt to authorize a one-year excess levy to be made in 2014 for collection in 2015 of \$112,260 at an approximate tax rate of \$1.50 per \$1,000 of assessed valuation, with the proceeds of such excess levy to be used for maintenance, operation and staff salaries for the North Country Emergency Medical Service for an estimated three (3) year period.

Should this tax levy be approved?

Tax Levy . . . Yes

Tax Levy . . . No

Statement for:

Keep your North Country EMS ambulances, vote *Yes!*

This is not a new tax. Your support will renew the 2011 excess levy for another 3 years. This levy is a full 1/3 of NCEMS' operating budget and provides the necessary funding to continue operating two ambulances 24/7.

Community support through tax levies is the only way our rural community can have 2 ambulances available 24/7. NCEMS utilizes a combination of volunteer, part-time and fulltime paramedics and EMTs to staff your ambulances. For every one fulltime employee at NCEMS there are six volunteers.

For North Country EMS taxing district residents there are no out-of-pocket costs for utilizing your ambulance service which costs between \$950 and \$1250 for a hospital transport. Your out-of-pocket expenses are credited by the property taxes you pay as a homeowner or renter. Visitors to our community always receive a full bill for any hospital transport provided.

As your ambulance provider, the mission of North Country EMS is, "To safeguard life through effective, efficient and innovative Medical Care and Rescue services that will enhance the quality of life and health of those we serve." Help keep NCEMS' 38 years of being here for our community going.

NCEMS takes pride in being transparent and responsible stewards of the funds entrusted to them by tax payers. This levy requires a 60 percent voter approval. It is critical that we maintain our current ambulance staffing, and that everyone votes yes!

Submitted by:

Chair: Jerry Olson	Tom McDowell	Lori Homola
(360) 695-1385	(360) 686-3390	(360) 247-5239

Rebuttal of statement against:

We agree, NCEMS is a wonderful and valuable ambulance provider. However, NCEMS is not "Big Government." They provide an essential service to the residents of our community. This renews the 2011 levy which is 1/3 of the operating costs for your ambulance. Every 3 years our citizens get to choose to have an ambulance or not. This is local government at its best! You, not "Big Government" getting to vote to "Keep Your Ambulances."

Explanatory statement

The Town of Yacolt through North Country EMS seeks voter approval to impose an excess property tax levy to be collected in 2015 at an approximate amount of \$1.50 per One Thousand Dollars of assessed valuation. This levy replaces the 2011 levy and makes up one third (1/3) of the operating costs of the District. The purpose of this levy is to continue to provide emergency medical services and paramedic response at the current level to the residents of the Town of Yacolt for an estimated three (3) year period.

Statement against:

The North Country Emergency Medical Service is a wonderful program that has served north and northeast Clark County with honor and distinction for nearly 40 years. That is not the issue with this ballot measure.

What is at issue is ever expanding government taxation. The wording of this proposition makes it seem like a trivial amount, only \$1.50 per \$1000 of valuation, just pennies! The problem is that very quickly all these pennies, pennies taken from your pocket, start to add up to dollars. Real dollars that you worked hard for. Money you use to feed your families.

What will you cut out of your budget to pay for your "yes" vote? You have enough to worry about without less of your money to spend on your own needs. The NCEMS is a valuable service to our fine town and it's hard working citizens. Call your Town Council and tell them so, and ask them what they will cut out of their budget to pay for it.

In these hard times we do not need more taxes, we need less. The Town Council is telling you to make the hard decisions instead of doing it themselves. You will have less money to spend, so what do you cut? It's time we sent the message to Big Government that they are our representatives; we elected them to answer the hard questions, and the answer is not to raid our wallets.

Vote Now. Vote No.

Submitted by:

Tom Clark

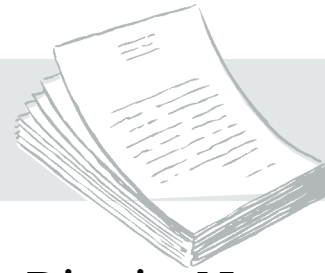
clarkcountytaxpayers@gmail.com

Rebuttal of statement for:

There's no tax like an old tax. Just because we've taxed ourselves too many times before does not mean we need to keep repeating our mistakes. Send a message that we won't be nickel and dimed into the poor house anymore. Call your elected officials, tell them to cut somewhere else. This is a program you want and you are tired of your tax dollars being wasted.

Be brave. Take a stand. Vote no.

Ballot measure



Clark County Emergency Medical Service District No. 1

Proposition No. 1

Emergency Medical Program Excess Levy

The Board of County Commissioners of Clark County, Washington adopted Resolution No. 2014-04-12, referring to the voters the foregoing proposition. This proposition allows the electors of Clark County Emergency Medical Service District No. 1 to authorize a one-year excess levy to be made in 2014 for collection in 2015 of \$1,609,025 at an approximate tax rate of \$1.50 per \$1,000 of assessed valuation, with the proceeds of the excess levy to be used for maintenance, operation and staff salaries for the North Country Emergency Medical Service for an estimated three (3) year period.

Should this levy be approved?

Tax Levy . . . Yes

Tax Levy . . . No

Statement for:

Keep your North Country EMS ambulances, vote Yes!

This is not a new tax. Your support will renew the 2011 excess levy for another 3 years. This levy is a full 1/3 of NCEMS' operating budget and provides the necessary funding to continue operating two ambulances 24/7.

Community support through tax levies is the only way our rural community can have 2 ambulances available 24/7. NCEMS utilizes a combination of volunteer, part-time and fulltime paramedics and EMTs to staff your ambulances. For every one fulltime employee at NCEMS there are six volunteers.

For North Country EMS taxing district residents there are no out-of-pocket costs for utilizing your ambulance service which costs between \$950 and \$1250 for a hospital transport. Your out-of-pocket expenses are credited by the property taxes you pay as a homeowner or renter. Visitors to our community always receive a full bill for any hospital transport provided.

As your ambulance provider, the mission of North Country EMS is, "To safeguard life through effective, efficient and innovative Medical Care and Rescue services that will enhance the quality of life and health of those we serve." Help keep NCEMS' 38 years of being here for our community going.

NCEMS takes pride in being transparent and responsible stewards of the funds entrusted to them by tax payers. This levy requires a 60 percent voter approval. It is critical that we maintain our current ambulance staffing, and that everyone votes yes!

Submitted by:

Chair: Jerry Olson
(360) 695-1385

Tom McDowell
(360) 686-3390

Lori Homola
(360) 247-5239

Rebuttal of statement against:

We agree, NCEMS is a wonderful and valuable ambulance provider. However, NCEMS is not "Big Government."

They provide an essential service to the residents of our community. This renews the 2011 levy which is 1/3 of the operating costs for your ambulance. Every 3 years our citizens get to choose to have an ambulance or not. This is local government at its best! You, not "Big Government" getting to vote to "Keep Your Ambulances."

Explanatory statement

Clark County Emergency Medical Service District No. 1 through North Country EMS seeks voter approval to impose an excess property tax levy to be collected in 2015 at an approximate amount of \$1.50 per One Thousand Dollars of assessed valuation. This levy replaces the 2011 levy and makes up one third (1/3) of the operating costs of the District. The purpose of this levy is to continue to provide emergency medical services and paramedic response at the current level to the residents of north Clark County for an estimated three (3) year period.

Statement against:

The North Country Emergency Medical Service is a wonderful program that has served north and northeast Clark County with honor and distinction for nearly 40 years. That is not the issue with this ballot measure.

What is at issue is ever expanding government taxation. The wording of this proposition makes it seem like a trivial amount, only \$1.50 per \$1000 of valuation, just pennies! The problem is that very quickly all these pennies, pennies taken from your pocket, start to add up to dollars. Real dollars that you worked hard for. Money you use to feed your families.

What will you cut out of your budget to pay for your "yes" vote? You have enough to worry about without less of your money to spend on your own needs. The NCEMS is a valuable service to our fine county and it's hard working citizens. Call your County Commissioner and tell them so, and ask them what they will cut out of their budget to pay for it.

In these hard times we do not need more taxes, we need less. The County Commissioners are telling you to make the hard decisions instead of doing it themselves. You will have less money to spend, so what do you cut? It's time we sent the message to Big Government that they are our representatives; we elected them to answer the hard questions, and the answer is not to raid our wallets.

Vote Now. Vote No.

Submitted by:

Tom Clark

clarkcountytaxpayers@gmail.com

Rebuttal of statement for:

There's no tax like an old tax. Just because we've taxed ourselves too many times before does not mean we need to keep repeating our mistakes. Send a message that we won't be nickel and dimed into the poor house anymore. Call your elected officials, tell them to cut somewhere else. This is a program you want and you are tired of your tax dollars being wasted.

Be brave. Take a stand. Vote no.

Complete text of measures

Town of Yacolt

Emergency Medical Service District No. 1
Resolution No. 505

WHEREAS, the Town Council of the Town of Yacolt, Clark County, Washington, is proposing submission to the voters of the District at an election to be held therein on August 5, 2014, a proposition authorizing a levy to be made in 2014 for collection in 2015 upon all taxable property within the District of \$112,260, the estimated cost to be approximately \$1.50 per \$1,000 assessed valuation in excess of the maximum tax levy specified by law for Emergency Medical Service Districts without a vote of the electors for the General Fund of the District. The proceeds of the levy are to be used for operating funds, maintenance and salaries of the North Country Emergency Medical Service for an estimated period of three (3) years; and

WHEREAS, it is certain that the money which will be available for 2015-2017 will be insufficient to pay the costs of the Medical Program and to meet the other general expenses of the Emergency Medical Service District and that an additional tax levy of \$112,260 needs to be made for the purposes outlined above; and

WHEREAS, this situation requires that an election be held in the District; now therefore,

BE IT RESOLVED by the Town Council, Town of Yacolt, Clark County, Washington, as follows:

Section 1. It is hereby found and declared that a need exists requiring the calling of an election, and the County Auditor of Clark County, Ex-Officio supervisor of elections for said County, is hereby requested to find and declare the existence of such need. The Auditor is further requested and directed to call and conduct an election in the District in the manner provided by law to be held therein on August 5, 2014 between the hours of 7:00 am and 8:00 pm (D.T.) for the purpose of submitting to the electors of the District for their approval or rejection the question whether or not a tax levy shall be made in 2014 for collection in 2015 upon all the taxable property of the District for the General Fund of the District of \$112,260 (the estimated cost to be approximately \$1.50 per \$1,000 assessed valuation) in excess of the maximum tax levy provided by law for Emergency Medical Service Districts without a vote of the electors of the District, the proceeds thereof to be used for the sole purpose of continuing the operation, maintenance, and the staff salaries of the North Country Emergency Medical Service for an estimated three (3) year period.

PASSAGE REQUIREMENTS. Pursuant to RCW 84.52.052, this ballot measure must receive at least 107 YES votes to meet validation requirements and must be approved by not less than a 60% majority of voters voting in the election.

Section 2. The "Ballot Title" of the aforesaid proposition shall be as follows:

Proposition No. 1

Emergency Medical Program Excess Levy

The Town Council, Town of Yacolt, Clark County, Washington, adopted Resolution No. 505, referring to the voters a proposition to allow the electors of the Town of Yacolt, to authorize a one-year excess levy to be made in 2014 for collection in 2015 in the total amount of \$112,260, at an approximate tax rate of \$1.50 per \$1,000 of assessed valuation, with the proceeds of such excess levy to be used for maintenance, operation and staff salaries for the North Country Emergency Medical Service for an estimated three (3) year period.

Should this tax levy be approved?

- TAX LEVY . . . YES
 TAX LEVY . . . NO

Section 3. The Clerk of the Town of Yacolt is directed to certify to the County Auditor of Clark County, Ex-Officio supervisor of elections of said County, a copy of this Resolution showing its adoption by the Town Council, at least 45 days prior to the date of such election, and to perform such other duties as are necessary or required by law to the end that the question of whether or not said excess tax levy shall be made as herein provided for shall be submitted to the voters of Emergency Medical Service District at the aforesaid election.

ADOPTED this 21st day of April, 2014.

Attest:

s/Cindy Marbut, Clerk, Town of Yacolt
s/Jeff Carothers, Mayor
s/Vince Myers, Council Member
s/Dave Hancock, Council Member
s/Lewis Gearhardt, Council Member
s/Josh Karl, Council Member

Opposed:
Rick Urias

Clark County

Clark County Emergency Medical Service District No. 1
Resolution No. 2014-04-12

WHEREAS, the Governing Board of Clark County Emergency Medical Service, District No. 1, Clark County, Washington, is proposing submission to the voters of the District at an election to be held therein on August 5, 2014, a proposition authorizing a levy to be made in 2014 for collection in 2015 upon all taxable property within the District of \$1,609,025, the estimated cost to be approximately \$1.50 per \$1,000 assessed valuation in excess of the maximum tax levy specified by law for Emergency Medical Service Districts without a vote of the electors for the General Fund of the District. The proceeds of the levy are to be used for operating funds, maintenance and salaries of the North Country Emergency Medical Service for an estimated period of three (3) years; and

WHEREAS, it is certain that the money which will be available for 2015-2017 will be insufficient to pay the costs of the Medical Program and to meet the other general expenses of the Emergency Medical Service District and that an additional tax levy of \$1,609,025 needs to be made for the purposes outlined above; and

WHEREAS, this situation requires that an election be held in the District; now therefore,

BE IT RESOLVED by the Board of County Commissioners of Clark County, as Governing Board of Clark County Emergency Medical Service District No. 1, as follows:

Section 1. It is hereby found and declared that a need exists requiring the calling of an election, and the County Auditor of Clark County, Ex-Officio supervisor of elections for said County, is hereby requested to find and declare the existence of such need. The Auditor is further requested and directed to call and conduct an election in the District in the manner provided by law to be held therein on August 5, 2014 between the hours of 7:00 am and 8:00 pm (D.T.) for the purpose of submitting to the electors of the District for their approval or rejection the question whether or not a tax levy shall be made in 2014 for collection in 2015 upon all the taxable property of the District for the General Fund of the District of \$1,609,025 (the estimated cost to be approximately \$1.50 per \$1,000 assessed valuation) in excess of the maximum tax levy provided by law for Emergency Medical Service Districts without a vote of the electors of the District, the proceeds thereof to be used for the sole purpose of continuing the operation, maintenance, and the staff salaries of the North Country Emergency Medical Service for an estimated three (3) year period.

PASSAGE REQUIREMENTS. Pursuant to RCW 84.52.052, this ballot measure must receive at least 1,299 YES votes to meet validation requirements and must be approved by not less than a 60% majority of voters voting in the election.

Section 2. The "Ballot Title" of the aforesaid proposition shall be as follows:

Proposition No. 1
Emergency Medical Program Excess Levy

The Board of County Commissioners of Clark County, Washington adopted Resolution No. 2014-04-12, referring to the voters a proposition to allow the electors of Clark County Emergency Medical Service District No. 1 to authorize a one-year excess levy to be made in 2014 for collection in 2015 in the total amount of \$1,609,025, at an approximate tax rate of \$1.50 per \$1,000 of assessed valuation, with the proceeds of such excess levy to be used for maintenance, operation and staff salaries for the North Country Emergency Medical Service for an estimated three (3) year period.

Should this tax levy be approved?

- TAX LEVY . . . YES
 TAX LEVY . . . NO

Section 3. The Clerk of the District is directed to certify to the County Auditor of Clark County, Ex-Officio supervisor of elections of said County, a copy of this Resolution showing its adoption by the Board of Commissioners, at least 45 days prior to the date of such election, and to perform such other duties as are necessary or required by law to the end that the question of whether or not said excess tax levy shall be made as herein provided for shall be submitted to the voters of Emergency Medical Service District at the aforesaid election.

ADOPTED this 29th day of April, 2014.

Board of Commissioners of Clark County, Washington

Attest:

s/Rebecca Tilton, Clerk of the Board
s/Tom Mielke, Chairman, Commissioner

Approved as to Form:

s/Chris Horne, Chief Civil Deputy Prosecuting Attorney



proud past, promising future

CLARK COUNTY
WASHINGTON

Auditor's Office
Elections Department
PO Box 8815
Vancouver WA 98666-8815

NONPROFIT ORG.
U.S. POSTAGE
PAID
PORTLAND, OR
PERMIT No. 1345

ECRWSS

RESIDENTIAL CUSTOMER
