

August 7, 2012 primary

# Voters' pamphlet

CLARK COUNTY WASHINGTON

Are you registered to vote?

**BEAT THE RUSH!**

Register or update your  
registration now

Online at [www.clarkvotes.org](http://www.clarkvotes.org)  
or call (360) 397-2345



Published by the Clark County Auditor's Office



# Auditor's letter

## To Clark County Voters

This locally prepared and funded Voters' Pamphlet contains information about most candidates and a local measure that will be on the ballot. The Secretary of State's website – [www.secstate.wa.gov/elections](http://www.secstate.wa.gov/elections) – has an online voters' pamphlet with additional information on federal, state, legislative and judicial candidates.

Every election, a large number of ballots cannot be delivered to voters because voters have moved and have not updated their addresses with the Elections Department. If you move, have moved or will temporarily be away from home, please contact the Elections Department at (360) 397-2345 or [elections@clark.wa.gov](mailto:elections@clark.wa.gov) or go online at [www.clarkvotes.org](http://www.clarkvotes.org) to provide your new address.

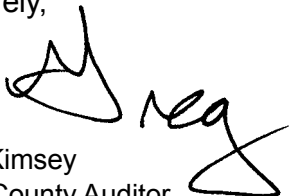
While we no longer have polling places, voters may deliver their ballots to one of the 35 secure, staffed ballot drop boxes throughout the county on primary election day. The drop-off locations are listed on Page 4 of this pamphlet. In addition, a drive-up ballot collection box is in the center of 14th Street about one block east of the Elections Department, 1408 Franklin Street. Collections at this ballot box will begin July 18.

If you are a registered voter and have not received your primary ballot in the mail by Friday, July 27, please contact the Elections Department for a replacement ballot.

The 2012 presidential election is rapidly approaching. If you are not yet registered to vote, I encourage you to do so. You can register online at [www.clarkvotes.org](http://www.clarkvotes.org). Information about registering by mail or in person also is on the website.

I urge you to read this pamphlet and seek more information. Informed voters make the best decisions. Please join me in exercising one of the most precious rights we have as Americans – the right to vote.

Sincerely,



Greg Kimsey  
Clark County Auditor  
[greg.kimsey@clark.wa.gov](mailto:greg.kimsey@clark.wa.gov), (360) 397-2078

## Contents

A reminder to vote .....	3
Be an informed voter. Here's how. .....	3
Ballot drop locations .....	4
Voting instructions - make sure your vote counts .....	5
Top 2 Primary sample ballot and frequently asked questions .....	6
Accessible voting .....	10
Statewide candidates .....	12
<b>Candidate statements</b> .....	14
<b>Ballot measures</b> .....	31
Complete text of the measures .....	32

**Participating jurisdictions** – 3rd Congressional District; 14th Legislative District; 17th Legislative District; 18th Legislative District; 20th Legislative District; 49th Legislative District; Clark County Commissioner Districts 1 and 2; State Court of Appeals, Division 2, District 3; Superior Court Judge, Dept. 2 and 8; Public Utility District No. 1 of Clark County, District 1; City of Camas

# A reminder to vote

## Registering to vote

Registering takes only a few minutes, and you may do it by mail or online at [www.clarkvotes.org](http://www.clarkvotes.org).

**MyVote**  
register to vote | my voting information

You must complete a voter registration form if you are registering for the first time in Washington or if you moved to a new county. If you have moved within the same county, you may complete a new form or contact the Elections Department by mail, email or phone. Registration forms are available during business hours at public libraries, schools when they are open, city and town halls, and the County Elections Department.

## Who is eligible to vote

The requirements for registering to vote are simple. You must be a United States citizen, 18 years or older on August 7, and live in Clark County 30 days prior to the election.

## How to vote

Clark County voters will receive their ballots by mail. If you are a registered voter in Clark County, we will mail you a ballot for every election in which you are entitled to participate.

The page **Voting instructions** (Page 5) in this pamphlet explains how to vote using the Clark County voting process. Please read the instructions in this pamphlet. We want your vote to count!

## Lost or damaged ballot?

If you lose your ballot, or it becomes damaged, you can obtain a replacement ballot by contacting the Elections Department.

**Phone:** (360) 397-2345

**Email:** [elections@clark.wa.gov](mailto:elections@clark.wa.gov)

**Mailing address:** PO Box 8815, Vancouver, WA 98666-8815

**Street address:** 1408 Franklin Street, Vancouver

**Speech to speech relay:** (800) 833-6384

# Be an informed voter. Here's how.

There are many sources of information for citizens wishing to know more about candidates, issues, and coverage of the upcoming August 7 primary.

## Read all about it

- **The Columbian**  
[www.columbian.com](http://www.columbian.com)
- **The Oregonian**  
[www.oregonlive.com/elections/](http://www.oregonlive.com/elections/)
- **The Camas/Washougal Post Record**  
[www.camaspstrecord.com](http://www.camaspstrecord.com)
- **The Reflector**  
[www.thereflector.com](http://www.thereflector.com)



## League of Women Voters

For a schedule of events or candidate forums, see their website at [www.washingtonvoter.org](http://www.washingtonvoter.org) or call (360) 693-9966.

## Watch cable TV

CVTV Clark-Vancouver Television on Comcast cable channels 21 and 23. Election coverage will include candidate forums and interviews of candidates in various races. See TV listings in *The Columbian*, cable channel 2, and the CVTV website, [www.cvtv.org](http://www.cvtv.org) or call (360) 696-8233.

If you do not have cable TV you can obtain video tapes of any program at any Fort Vancouver Regional Library branch or from CVTV.

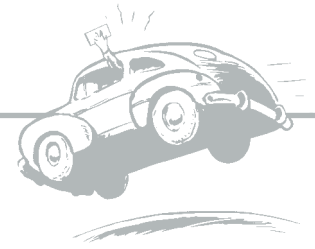


## Look online



- Information about candidates for statewide offices can be found on the Secretary of State's website at [www.sos.wa.gov/elections/](http://www.sos.wa.gov/elections/).
- Election coverage can be found on the Clark County Elections Department website at <http://clarkvotes.org>.
- The Fort Vancouver Regional Library has computers with Internet connections available for public use.

# Ballot drop locations



If you wish to return your voted ballot in person before the primary, August 7, take it to the:

■ **Clark County Elections Department**

1408 Franklin Street, Vancouver. 8 a.m. to 5 p.m. Monday through Friday.  
If you lose your ballot or it becomes damaged, you can obtain a replacement ballot only at this location.

■ **Red permanent ballot drop box**

West 14th and Esther streets, Vancouver (one-half block east of the Elections Department). *Available 24 hours a day.*

**Election Day is Tuesday, August 7, 2012.** If you wish to return your voted ballot **in person on Election Day** take it to the red ballot drop box before 8 p.m.

In addition, election workers will be present to accept completed ballots only on Election Day from 7 a.m. to 8 p.m. at these locations:

**Clark County Elections Department**

1408 Franklin Street, Vancouver

**Battle Ground City Hall**

109 SW 1st Street, Battle Ground

**Battle Ground High School**

300 W Main Street, Battle Ground

**Burton Elementary School**

14015 NE 28th Street, Vancouver

**Chinook Elementary School**

1900 NW Bliss Road, Vancouver

**Crestline Elementary School**

13003 SE 7th Street, Vancouver

**Dorothy Fox Elementary School**

2623 NW Sierra Street, Camas

**Eleanor Roosevelt Elementary School**

2921 Falk Road, Vancouver

**Ellsworth Elementary School**

512 SE Ellsworth Avenue, Vancouver

**Felida Elementary School**

2700 NW 119th Street, Vancouver

**Fisher's Landing Elementary School**

3800 SE Hiddenbrook Drive,  
Vancouver

**Glenwood Heights Primary School**

9716 NE 134th Street, Vancouver

**Grace Foursquare Gospel Church**

717 SE Everett Road, Camas

**Hazel Dell Elementary School**

511 NE Anderson Road, Vancouver

**Helen Baller Elementary School**

1954 NE Garfield Street, Camas

**Hockinson Middle School**

15916 NE 182nd Avenue, Brush Prairie

**Image Elementary School**

4400 NE 122nd Avenue, Vancouver

**La Center Community Center**

1000 E 4th Street, La Center

**Lincoln Elementary School**

4200 Daniels Street, Vancouver

**M.L. King Elementary School**

4801 Idaho Street, Vancouver

**Mill Plain Elementary School**

400 SE 164th Avenue, Vancouver

**Minnehaha Elementary School**

2800 NE 54th Street, Vancouver

**Pleasant Valley School**

14320 NE 50th Avenue, Vancouver

**Prune Hill Elementary School**

1601 NW Tidland Street, Camas

**Ridgefield Nazarene Church**

747 Pioneer Street, Ridgefield

**Riverview Elementary School**

12601 SE Riveridge Drive, Vancouver

**Salmon Creek Elementary School**

1601 NE 129th Street, Vancouver

**Sarah J. Anderson Elementary School**

2215 NE 104th Street, Vancouver

**Sifton Elementary School**

7301 NE 137th Avenue, Vancouver

**Sunset Elementary School**

9001 NE 95th Street, Vancouver

**Walnut Grove Elementary School**

6103 NE 72nd Avenue, Vancouver

**Washougal Community Center**

1681 C Street, Washougal

**Yacolt Primary School**

406 W Yacolt Road, Yacolt

# Voting instructions

Your ballot packet will be mailed to you about 20 days before the August 7 primary. It will contain:

- An insert explaining Washington's Top 2 Primary.
- An instruction sheet that explains the voting process.
- The official ballot where you will mark your choices (it will be folded).
- A yellow secrecy envelope with instructions printed on it.
- A return affidavit envelope with green stripes that is addressed to the county Auditor.

To make sure your vote is counted please follow the steps below when you receive your ballot package.

- 1** Read the following instructions that explain how to vote in this election.
- 2** Unfold and read the ballot. It contains all the races and ballot measures that you can vote.
- 3** Mark your ballot by completely filling in the box to the left of your choice with a black or blue ink pen.

*Example:  
Candidate 2 has been chosen in the city of Vancouver, council race.  
One candidate has been marked and the box is filled in completely.*

<input type="checkbox"/>	Write-in
<b>LOCAL NONPARTISAN OFFICES</b>	
CITY OF VANCOUVER COUNCIL - POSITION NO. 6 Nonpartisan Full Four Year Term VOTE FOR ONE	
<input type="checkbox"/>	Candidate 1
<input checked="" type="checkbox"/>	Candidate 2
<input type="checkbox"/>	Write-in

**4** *Optional.* If you want to vote for a candidate not appearing on the ballot, completely fill in the box to the left of the Write-In choice and use the line provided.

**5** **Check your ballot to be sure you have voted for all the candidates and measures you intended.** Make sure you voted for only one candidate in each race. If you vote for more than one candidate, your votes in that race will be rejected. Your other votes will be counted if they are done correctly.

**If you make a mistake marking your ballot**, draw a line through the entire candidate's name as shown below. You then have the option of making another choice.

<b>Full Four Year Term</b>	
<b>VOTE FOR ONE</b>	
<input checked="" type="checkbox"/>	Candidate D
<input checked="" type="checkbox"/>	Candidate E
<input type="checkbox"/>	Write-in

**6** Refold the ballot in the same way you received it and place it inside the yellow secrecy envelope. Then seal it. Don't write on this envelope.

**7** Place the yellow secrecy envelope into the white affidavit envelope with green stripes.

**8** Read the oath on the affidavit envelope, and then sign and date it.

**9** Seal the envelope and put a first class stamp (45¢) on the envelope and mail it so it is postmarked no later than August 7.

You may also deliver your envelope in person. Please turn to Page 4 for information about ballot deposit locations.

If you need help, call the Elections Department at (360) 397-2345.

# Top 2 Primary sample ballot

## Vote Both Sides

OFFICIAL BALLOT CLARK COUNTY, WASHINGTON  
 PRIMARY AND SPECIAL ELECTION August 7, 2012 Precinct 448

### INSTRUCTIONS

**MAKE SURE YOUR VOTE COUNTS** by reading the voting instructions below and those printed on the other materials in your ballot packet.

**VOTING INSTRUCTIONS:**

- 1) Your ballot must be voted in secret and shown to no one.
- 2) Use a black or blue ink pen to mark your ballot by completely filling in the box to the left of your choices.
- 3) **VOTE FOR ONLY ONE CHOICE FOR EACH OFFICE OR BALLOT MEASURE.** Unless specifically allowed by law, more than one vote for an office or ballot measure will be an overvote and no votes for that office or ballot measure will be counted.
- 4) To vote for a person not appearing on the ballot, completely fill in the box to the left of the "Write-in" choice and use the line provided for their name. Write-in votes cast for Precinct Committee Officer should include the candidate's political party.
- 5) **IF YOU MAKE A MISTAKE WHEN VOTING,** completely cross out the name of the candidate or choice you do not want. You then have the option of making another choice.

**READ:** Each candidate for partisan office may state a political party that he or she prefers. A candidate's preference does not imply that the candidate is nominated or endorsed by the party, or that the party approves of or associates with that candidate.

### FEDERAL PARTISAN OFFICES

- U.S. SENATOR**  
 VOTE FOR ONE
- Candidate A (Prefers G.O.P. Party)
  - Candidate B (Prefers Reform Party)
  - Candidate C (Prefers Democratic Party)
  - Candidate D (Prefers Green Party)
  - Candidate E (Prefers Republican Party)
  - Candidate F (Prefers Democratic Party)
  - Candidate G (Prefers Republican Party)
  - Write-in

- U.S. REPRESENTATIVE**  
 3RD CONGRESSIONAL DISTRICT  
 VOTE FOR ONE
- Candidate A (Prefers G.O.P. Party)
  - Candidate B (Prefers Reform Party)
  - Candidate C (Prefers Democratic Party)
  - Candidate D (Prefers Green Party)
  - Candidate E (Prefers Republican Party)
  - Candidate F (Prefers Democratic Party)

STA  
 18T  
 POS  
 VOT

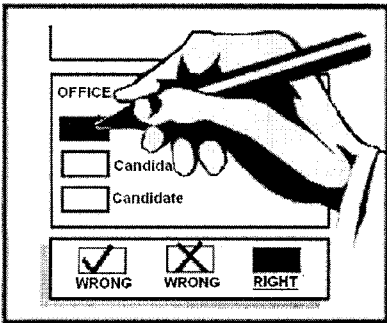
- Candidate C (Prefers Democratic Party)
- Candidate D (Prefers Green Party)
- Candidate E (Prefers Republican Party)
- Candidate F (Prefers Democratic Party)
- Candidate G (Prefers Republican Party)
- Write-in

.....

This sample ballot is representative of the official ballot that voters will receive for the primary. Please note the instructions for both the partisan offices and the Precinct Committee Officer, if applicable to your ballot. The following three pages address many questions about the Top 2 Primary.

.....

Test Ballot



# Top 2 Primary FAQs

---

*From the Washington Secretary of State Sam Reed*

## **What does this mean for voters?**

In August 2012, the state will conduct a Top 2 Primary. Voters will not have to pick a party and will be able to choose among all candidates for each office. In each race, the two candidates with the most votes will advance to the general election.

## **What is a Top 2 Primary?**

A Top 2 Primary allows voters to choose among all candidates running for each office. Voters do not have to declare a party affiliation in order to vote in the primary.

Candidates for partisan office may state a preference for a political party, which is listed on the ballot. Candidates do not have to be supported, nominated or endorsed by that party. The two candidates who receive the most votes in the primary qualify for the general election. Candidates must also receive at least 1 percent of the votes cast in that race in order to advance to the general election.

## **What does the candidate's "party preference" mean in a Top 2 Primary?**

Each candidate for partisan office may state a political party that he or she prefers. A candidate's preference does not imply that the candidate is nominated or endorsed by the party, or that the party approves of or associates with that candidate.

## **How did the Top 2 Primary become law?**

The Top 2 Primary was passed by the people in 2004 as an initiative. I-872 passed by almost 60 percent.

## **What happened after I-872 passed?**

In May 2005, the state Democratic, Republican and Libertarian parties sued in federal court to prevent its implementation. The political parties argued that the Top 2 Primary system violated their right to free association.

The federal District Court agreed with them and issued an order in July 2005 prohibiting the state from implementing the Top 2 Primary. The state appealed, but the Court of Appeals also agreed with the parties in an order issued in 2006. The state appealed to the U.S. Supreme Court.

## **What did the U.S. Supreme Court decide?**

The court upheld the constitutionality of I-872. The Supreme Court reasoned that, since this form of primary has never been used, the political parties' challenge was based on assumptions. The court decided that it would not nullify the vote of the people based on speculation.

## **Could a race in the general election include two candidates who prefer the same party?**

Yes. The candidates in each race who advance to the general election will be the two who receive the most votes in the primary. It is possible that both candidates who advance to the general election prefer the same party.

## **Can a voter still write-in a candidate?**

Yes. Each race on the ballot, except Precinct Committee Officer, will still have a write-in line and you can write in the name of a candidate.

## **What offices are affected?**

The Top 2 Primary applies to elections for partisan office, including in the U.S. Senate, U.S. House of Representatives and state legislature, as well as the offices of governor and county commissioner.

The Top 2 Primary does not apply to elections for U.S. president or vice president or nonpartisan offices such as judicial and municipal positions or positions on a junior taxing district, fire district or school board.

---

### **Does the U.S. Supreme Court opinion impact the presidential primary?**

No. The Top 2 Primary is for local, state and Congressional races. The presidential primary is a separate system that only applies to nominating candidates for president, and how the major parties allocate their delegates to the national conventions. The relevant statutes are RCW 29A.56.010 through RCW 29A.56.060.

### **Where can I find more information about the Top 2 Primary?**

The Secretary of State's Office posts information about Initiative 872, the administrative rules to implement Initiative 872, and the court documents in the legal challenge on its Web site at:

[www.sos.wa.gov/elections/Top2Primary.aspx](http://www.sos.wa.gov/elections/Top2Primary.aspx)

## Questions from candidates

### **What does this mean for candidates?**

Candidates must still file a declaration of candidacy with the County Auditor or the Secretary of State, depending on the office. Candidates will be allowed to state on the declaration of candidacy which political party they prefer, and that information will be listed on the ballot.

This is strictly an expression of that candidate's preference. It does not imply that the candidate is nominated or endorsed by the party, or that the party approves of or associates with that candidate. For purposes of conducting elections, people running for office are not members of a particular party or candidates of a particular party. Rather, they are candidates running for office, and are provided the opportunity to express a preference for a political party.

### **Are minor party candidates still required to conduct conventions and collect signatures in order to run for office?**

No. All candidates use the same procedures to file for office and appear on the primary ballot. The Top 2 Primary evens the playing field for candidates. Candidates may list any party as the party that they prefer.

Minor party and independent candidates for president and vice president are an exception. They must still collect signatures and obtain the consent of the candidates.

### **Can the political parties prevent a candidate from expressing a preference for their party?**

No. Candidates are permitted to express a preference for any political party. The court ruled that the ability of candidates to express a preference for a party does not severely burden the rights of the party.

### **Can the political parties still nominate candidates?**

Yes. State law no longer dictates how political parties conduct their nominations. Now, the state and local parties decide how to conduct their nominations. The rules for party-run nominations vary party to party, and even between the state and local parties. Political parties can nominate multiple candidates for the same race. The court stated:

*Whether parties nominate their own candidates outside the state-run primary is simply irrelevant. In fact, parties may now nominate candidates by whatever mechanism they choose because I-872 repealed Washington's prior regulations governing party nominations.*

### **What about Precinct Committee Officer positions?**

Your primary ballot may include the names of candidates for Precinct Committee Officer. Precinct Committee officers are officials of the Democratic and Republican parties.

Officers are being elected in the Aug. 7 primary. Candidates will not appear on the general election ballot.

The only Precinct Committee officers whose names appear on the primary ballot are those in races with two or more candidates of the same party in the same precinct. If only one candidate in either the Democratic or Republican party files in a precinct, that person is deemed elected to the office and their name will not appear on the ballot. Write-in votes for Precinct Committee Officers are not accepted.



### Can the political parties demand that their nominees be distinguished on the ballot?

No. The law does not allow nominations or endorsements by interest groups, political action committees, political parties, labor unions, editorial boards, or other private organizations to be printed on the ballot.

The Supreme Court ruled the political parties do not have a constitutional right to have their nominees distinguished on the ballot. The Supreme Court said:

*“It is true that parties may no longer indicate their nominees on the ballot, but that is unexceptionable: The First Amendment does not give political parties a right to have their nominees designated as such on the ballot. ... Parties do not gain such a right simply because the state affords candidates the opportunity to indicate their party preference on the ballot. “Ballots serve primarily to elect candidates, not as forums for political expression.”*

### Can candidates advertise themselves as nominees of a political party?

Yes. Candidates can promote themselves in voters’ pamphlets, advertisements, and other forums as the nominees of a political party.

### After candidate filing week, can a major party fill vacancies on the major party ticket?

No. This process was specifically repealed in I-872 because there is no major party ticket in a Top 2 Primary. All candidates are treated the same.

A race will only be reopened for a special filing period if there is a void in candidacy, meaning no candidates filed during the regular filing period.

### If only one or two candidates file, will that race skip the primary and only appear on the general election ballot?

No. Even if only one or two candidates file for a partisan office, that race will still appear in the primary. It is only in nonpartisan elections that the race skips the primary when just one or two candidates file. The relevant statute is RCW 29A.52.220.

### If a candidate for partisan office who was one of the top two vote-getters in the primary dies or is disqualified before the general election, will the party be allowed to name a replacement?

No. In a Top 2 Primary, a candidate’s party preference is purely for informational purposes and does not play any role in the administration of the election. Because the candidates are not representatives or nominees of a political party, a party is not allowed to name a replacement candidate. The laws that previously allowed the political parties to replace deceased or disqualified candidates were repealed in I-872.



Ballot drop box on W 14th and Esther streets, Vancouver

# Accessible voting

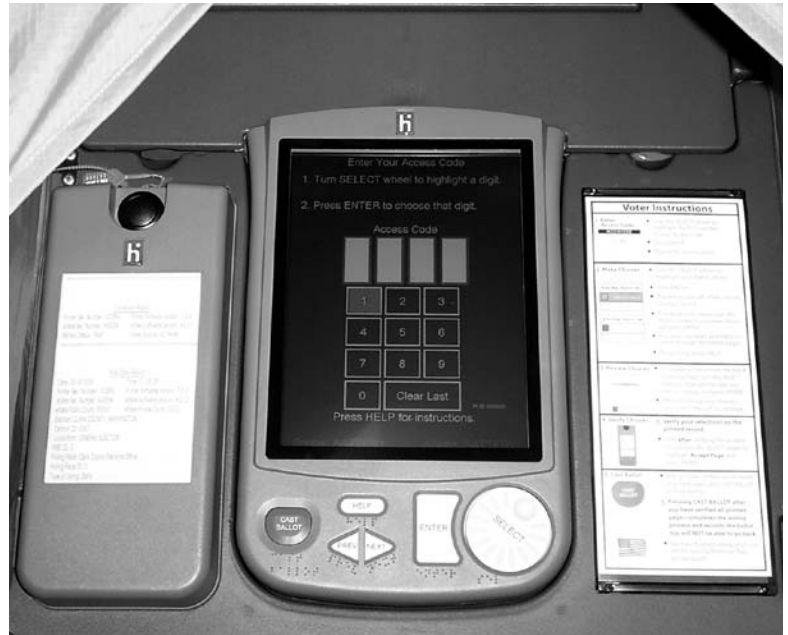
## Using the eSlate

Clark County voters with disabilities have the option of casting a truly secret ballot using an accessible voting unit.

The eSlate accessible voting unit is a direct record electronic machine that allows voters with disabilities, including those who are blind, mobility impaired or lack upper-body dexterity, to vote privately and independently. The eSlate is in a booth that is wheelchair accessible. The photos to the right are of the eSlate, encased in its booth.

Beginning 20 days before each election this accessible voting machine is available from 8 a.m. to 5 p.m. at the Clark County Elections Office, 1408 Franklin Street, Vancouver.

The elections department may be reached by taking C-Tran bus #1 Fruit Valley Route. You will be let off at Franklin Street and Mill Plain Blvd.



*The top photograph shows a close-up of the e-Slate. The photograph on the right shows the e-Slate as part of the wheelchair accessible booth.*



## About the accessible eSlate

The eSlate is accessible in six ways.

- For those who cannot operate the eSlate using the buttons and wheel, special interface devices are available as shown here.
- For those who cannot see or read the eSlate screen, use the headphones with volume control to hear the ballot.

## Accessible features

- Those who are blind, visually impaired, or have difficulty reading can listen to the ballot. The SELECT wheel is the trigger to the audio. Turning clockwise moves the listener through the ballot. To hear something repeated, turn the SELECT wheel counterclockwise.

Those using hearing aids with a telecoil mode may use their neck-loop rather than the headphones.



- The RED jelly switch is the same as the SELECT wheel. The GREEN jelly switch is the same as the ENTER button.



- Voters with quadriplegia can use their sip-n-puff to move through the ballot. Sip to move through the ballot. Puff to mark your choice.



**The accessible eSlate unit is in a wheelchair-accessible booth.  
If you are not in a chair but need to sit while voting, a chair can be used with the special booth.**

# Statewide candidates

The State will not be producing a printed State Voters' pamphlet for this primary. The online version can be seen at <https://wei.sos.wa.gov/agency/osos/en/MyVote/Pages/MyVote.aspx>

Here is a list of all state offices and candidates that will appear on the ballot with their contact information provided:

## FEDERAL PARTISAN OFFICES

### U.S. SENATOR

**Michael Baumgartner**  
(Prefers Republican Party)  
218 Main St Ste 704  
Kirkland WA 98033  
(206) 337-2242  
Michael@VoteBaumgartner.com  
www.VoteBaumgartner.com

**Will Baker**  
(Prefers Reform Party)  
PO Box 458  
Tacoma WA 98401  
(253) 627-1317  
Willpower76@hotmail.com

**Chuck Jackson**  
(Prefers Republican Party)  
1429 Ave D #341  
Snohomish WA 98290  
chuck@scaryreality.com  
www.scaryreality.com

**Timmy (Doc) Wilson**  
(Prefers Democratic Party)  
PO Box 95647  
Seattle WA 98145  
(206) 769-0967  
sluggertimm@yahoo.com  
www.docwilsonusenate.com

**Art Coday**  
(Prefers Republican Party)  
PO Box 55683  
Shoreline WA 98155  
(206) 992-6166  
artcoday@gmail.com

**Maria Cantwell**  
(Prefers Democratic Party)  
PO Box 12740  
Seattle WA 98111  
(206) 285-2012  
maria@cantwell.com

**Glen (Stocky) R. Stockwell**  
(Prefers Republican Party)  
405 N Division St  
Ritzville WA 99169  
(509) 540-6899  
StockwellStocky@aol.com

**Mike the Mover**  
(Prefers Republican Party)  
16925 9th Ave SE  
Mill Creek WA 98012  
(206) 546-9545  
mike\_the\_mover@comcast.net

## GOVERNOR

**Rob Hill**  
(Prefers Democratic Party)  
17104 13th Ave NW  
Shoreline WA 98177  
(206) 595-1662  
Robhill10@hotmail.com

**Rob McKenna**  
(Prefers Republican Party)  
PO Box 52866  
Bellevue WA 98015  
(425) 449-8244  
Rob@RobMcKenna.org

**Jay Inslee**  
(Prefers Democratic Party)  
901 Rainier Ave S  
Seattle WA 98144  
(206) 533-0575  
Jay@JayInslee.com  
www.jayinslee.com

**James White**  
(Prefers Independent Party)  
PO Box 61  
Marysville WA 98270  
(206) 617-4989  
White4gov2012@hotmail.com

**Christian Joubert**  
(States No Party Preference)  
PO Box 1382  
Edmonds WA 98020  
(206) 446-6079  
christian@holisticgovernor.org

**Shahram Hadian**  
(Prefers Republican Party)  
PO Box 15074  
Mill Creek WA 98082  
(425) 530-1585  
info@hadian2012.com  
www.Hadian2012.com

**L. Dale Sorgen**  
(Prefers Independent Party)  
PO Box 1794  
Sultan WA 98294  
(425) 609-2251  
dalesorgen@imagineliberty.us

**Max Sampson**  
(Prefers Republican Party)  
32306 Morgan Drive  
Black Diamond WA 98010  
(360) 886-1426  
Maxsampson2000@yahoo.com

**Javier O. Lopez**  
(Prefers Republican Party)  
PO Box 5068  
Lacey WA 98509  
(360) 888-8203  
roralop@yahoo.com  
www.lopez2012.org

## LT. GOVERNOR

**Glenn Anderson**  
(Prefers Indep Republican Party)  
PO Box 1682  
Issaquah WA 98027  
(425) 222-7092  
glenn.anderson@att.net  
www.glennanderson2012.org

**Brad Owen**  
(Prefers Democrat Party)  
1933 E State Route 3  
Shelton WA 98584  
(360) 490-9086  
bradowen@msn.com  
www.BradOwen2012.com

**James Robert Deal**  
(States No Party Preference)  
PO Box 2276  
Lynnwood WA 98036  
(425) 771-1110  
james@jamesrobertdeal.com

**Bill Finkbeiner**  
(Prefers Republican Party)  
12011 Bel-Red Rd Ste 206  
Bellevue WA 98005  
(206) 229-0412  
billfinkbeiner@msn.com

**Dave T. Sumner IV**  
(Prefers Neopopulist Party)  
PO Box 2133  
Kalama WA 98626

**Mark Greene**  
(Prefers Democracy Indep. Party)  
PO Box 612  
Bellevue WA 98009  
(425) 747-7966  
Mark@brandnewelections.us  
www.brandnewelections.us

## SECRETARY OF STATE

**Jim Kastama**  
(Prefers Democratic Party)  
PO Box 1271  
Tacoma WA 98401  
(253) 655-0537  
jim@jimkastama.com  
www.jimkastama.com

**David J. Anderson**  
(States No Party Preference)  
1616 Bright Star Way NE  
Olympia WA 98506  
(360) 317-6113  
vote4anderson@live.com  
www.vote4anderson.org

**Sam Wright**  
(Prefers The Human Rights Party)  
1522 Evanston Ct NE  
Olympia WA 98506  
(360) 943-4424  
samwright1522@comcast.net  
www.thehumanrightsparty.org

**Karen Murray**  
(Prefers Constitution Party)  
PO Box 1866  
Quincy WA 98848  
(509) 787-5125  
info@murray4sos.org

**Kathleen Drew**  
(Prefers Democratic Party)  
120 State Ave NE #1042  
Olympia WA 98501  
(206) 979-5467  
kathleendrew2012@gmail.com  
www.kathleendrew2012.com

**Kim Wyman**  
(Prefers Republican Party)  
PO Box 3812  
Lacey WA 98509  
(360) 742-0678  
KimWyman12@comcast.net  
www.KimWyman.com

**Greg Nickels**  
*(Prefers Democratic Party)*  
 3413 38th Ave SW  
 Seattle WA 98126  
 (206) 938-2958  
 info@gregnickels.com  
 www.gregnickels.com

#### STATE TREASURER

**Jim McIntire**  
*(Prefers Democratic Party)*  
 PO Box 21941  
 Seattle WA 98111  
 (360) 399-6509  
 jim@jimmcintire.com  
 www.jimmcintire.com

#### STATE AUDITOR

**Troy Kelley**  
*(Prefers Democratic Party)*  
 PO Box 99415  
 Lakewood WA 98496  
 (800) 831-8397  
 troy@troykelley.com

**James Watkins**  
*(Prefers Republican Party)*  
 PO Box 2213  
 Kirkland WA 98083  
 (425) 390-4348  
 info@watkinsforauditor.com

**Mark Miloscia**  
*(Prefers Democratic Party)*  
 30720 19th Ave S  
 Federal Way WA 98003  
 (253) 839-7087  
 mark@markmiloscia.com  
 www.markmiloscia.com

**Craig Pridemore**  
*(Prefers Democratic Party)*  
 1111 Main St Ste 400  
 Vancouver WA 98660  
 (360) 823-8477  
 info@craigpridemore.com

#### ATTORNEY GENERAL

**Bob Ferguson**  
*(Prefers Democratic Party)*  
 PO Box 2405  
 Seattle WA 98111  
 (206) 523-7245  
 mikescottwebb@gmail.com

**Reagan Dunn**  
*(Prefers Republican Party)*  
 PO Box 40417  
 Bellevue WA 98015  
 (206) 232-0339  
 info@reagandunn.com

**Stephen Pidgeon**  
*(Prefers Republican Party)*  
 3002 Colby Ave Ste 306  
 Everett WA 98201  
 (425) 605-4774  
 attorney@stephenpidgeon.com  
 www.stephenpidgeon4ag.com

#### COMMISSIONER OF PUBLIC LANDS

**Stephen A. Sharon**  
*(States No Party Preference)*  
 4545 10th Ave S  
 Seattle WA 98108  
 (425) 922-9090  
 Steve\_sharon@hotmail.com

**Peter J. Goldmark**  
*(Prefers Democratic Party)*  
 PO Box 12917  
 Seattle WA 98111  
 (206) 913-8619  
 info@petergoldmark.com  
 www.petergoldmark.com

**Clint Didier**  
*(Prefers Republican Party)*  
 8770 Glade N Rd  
 Pasco WA 99301  
 (509) 380-7324  
 farmerdidier@gmail.com

#### SUPERINTENDENT OF PUBLIC INSTRUCTION

**James Bauckman**  
 PO Box 412  
 Bellingham WA 98227  
 (360) 201-5022  
 jamesbauckman@gmail.com  
 www.jamesbauckmanforSPI.wordpress.com

**Randy I. Dorn**  
 PO Box 5499  
 Lacey WA 98509  
 (253) 256-2147  
 info@randydorn2012.com  
 www.randydorn2012.com

**Don Hansler**  
 22711 66th Ave Ct E  
 Spanaway WA 98387  
 (253) 846-3354  
 donhansler@comcast.net

**John Patterson Blair**  
 26410 Vashon Hwy SW  
 Vashon WA 98070  
 (206) 391-8780  
 ANewFoundation@centurytel.net

**Ronald L. (Ron) Higgins**  
 806 Cedar Ave  
 Richland WA 99352  
 (509) 946-3596  
 ronald.higgins@charter.net

#### INSURANCE COMMISSIONER

**John R. Adams**  
*(Prefers Republican Party)*  
 1715 W Nickerson St  
 Seattle WA 98119  
 (206) 282-7000  
 adams-seagen@att.net

**Mike Kreidler**  
*(Prefers Democratic Party)*  
 PO Box 7485  
 Olympia WA 98507  
 (360) 352-5661  
 mike@mikekreidler.com

**Scott Reilly**  
*(Prefers Republican Party)*  
 PO box 194  
 Medina WA 98039  
 (425) 688-0339  
 mulsgroup@gmail.com

**Brian C. Berend**  
*(Prefers Independent Party)*  
 34 37th St NE #A  
 Auburn WA 98002  
 (253) 351-2990  
 bcberend@msn.com

#### SUPREME COURT JUSTICE ~ POSITION 2

**Douglas W. McQuaid**  
 4700 42nd Ave SW Ste 475  
 Seattle WA 98116  
 (206) 935-4746  
 mcquaidlaw@comcast.net

**Susan Owens**  
 6963 Littlerock Rd SW  
 Olympia WA 98512-7246  
 (360) 866-6052  
 sowens@olypen.com  
 www.justicesusanowens.com

**Scott Stafne**  
 2033 6th Ave Ste 800  
 Seattle WA 98121  
 (206) 629-2055  
 Info@StafneforJustice.com

#### SUPREME COURT JUSTICE ~ POSITION 8

**Bruce O. Danielson**  
 PO Box 650  
 Port Orchard WA 98366  
 (360) 895-1246  
 votedanielson@aol.com

**Steve Gonzalez**  
 PO Box 12316  
 Seattle WA 98111  
 (360) 207-1789  
 info@justicegonzalez.com

#### SUPREME COURT JUSTICE ~ POSITION 9

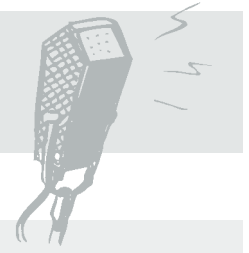
**Bruce Hilyer**  
 PO Box 19794  
 Seattle WA 98109  
 (206) 852-4295  
 bwhilyer@yahoo.com

**Sheryl Gordon McCloud**  
 710 Cherry St  
 Seattle WA 98104  
 (206) 224-8777  
 Sheryl@sgmcloud.com  
 www.mccloudforjustice.com

**Richard B. Sanders**  
 PO Box 11794  
 Olympia WA 98508  
 (206) 999-9350  
 RBSanders@aol.com

**John W. Ladenburg**  
 603 Stewart St #819  
 Seattle WA 98101  
 (253) 241-1311  
 John@Ladenburg.org

# Candidate statements



## Federal Partisan Office

US REPRESENTATIVE 3<sup>RD</sup> CONGRESSIONAL DISTRICT



### Jaime Herrera Beutler

*Prefers Republican Party*

From day one, serving Southwest Washington families and communities has remained my mission in Congress.

*Bringing jobs back to Southwest Washington is priority one.* By removing red tape and barriers to job growth, I'm fighting to help our economy grow.

*I'm making government accountable to you,* taking quick action to keep government responsive to the people.

*I'm hunting down government inefficiency to tackle our national debt.*

*I'm protecting Social Security and Medicare, vital programs to our seniors.*

No one will work harder for Southwest Washington than I will. I ask for your vote to keep serving you in Congress.

**Address:** PO Box 1614, Ridgefield 98642

**Phone:** (360) 597-3065

**Email:** Info@VoteJaime.com

**Website:** www.VoteJaime.com



### Jon T. Haugen

*Prefers Democratic Party*

*Patriot.* Jon Haugen is a United States Naval Academy graduate; (top third, 1981); Navy Pilot. He had a 24-year military career serving with NATO (North Atlantic Treaty Organization) and later as a Commanding Officer.

*Fiscal Conservative.* Jon Haugen is the only candidate to offer an I-5 bridge plan that saves \$3 billion without tolls or light rail.

*In the Military Jon Haugen worked with others*

*to solve problems, he will bring that common sense approach to solve the challenges we face.*

Married 27 years; Jon Haugen's wife is a Registered Nurse. The Haugen's have three children; all attended Clark College.

**Address:** Jon T. Haugen, 13502 NW 49th Avenue, Vancouver 98685; **Phone:** (360) 907-8340

**Website:** www.HaugenVet.com

**Twitter:** @HaugenVet; **Facebook:** HaugenVet.com



### Norma Jean Stevens

*States No Party Preference*

The Constitution is the supreme law of the land and our elected officials must uphold their oath to protect it. I am running on no party as there are no parties mentioned in the constitution and therefore no parties should be controlling our country or elections. I support free markets with less government intervention. I believe in smaller government and a balanced budget with total

fiscal responsibility.

Our liberties must be kept intact with those already taken being restored. It's time to end the wars and keep a strong national defense here. Vote for Norma Jean. She's on America's team!

**Address:** 30512 Stackpole Lane, Ocean Park 98640; **Phone:** (360) 665-2476

**Email:** normajean2012@msn.com

**Website:** normajeanforamerica.com

## State Partisan Office

### STATE SENATOR 14<sup>TH</sup> LEGISLATIVE DISTRICT



#### Curtis King

*Prefers Republican Party*

It has been my honor to represent the citizens of the 14th Legislative District.

I serve on four committees and have not missed a single vote on the Senate floor.

Our state currently faces many challenges. Most pressing is the proper funding of our K-12 system, maintenance and preservation of transportation, and caring for our most vulnerable.

Our problems are rooted in spending, not

a lack of revenues. We need a smaller, more efficient state government. We need to help small business succeed rather than adding more burdens.

Your vote will help me continue to address these challenges.

**Address:** Committee to Re-Elect Curtis King, PO Box 10025, Yakima 98909

**Phone:** (509) 952-4667

**Email:** [senatorking@charter.net](mailto:senatorking@charter.net)

## State Partisan Office

### STATE REPRESENTATIVE 14<sup>TH</sup> LEGISLATIVE DISTRICT POSITION NO. 1



#### Paul Spencer

*Prefers Democratic Party*

Retired in 2008 from industrial career. Familiar with the state laws that cover Energy, Safety, Environment, and County Government. Co-founder of the Skamania County EDC in 1985.

Supporter of *Initiative 937* in 2006. Democratic Party State Committeeman and member of the Agricultural and Rural Caucus.

I challenge independent voters to consider

that rural regions of our state are poorly served by Republican politicians in a State Legislature with a solid – and stable – Democratic Party majority. We rural citizens should elect Roosevelt Democrats, such as myself, who can negotiate with urban Democrats on a collegial basis.

**Address:** Paul Spencer, PO Box 173, Stevenson 98648; **Phone:** (360) 223-5756

**Email:** [spencerinthegorge@yahoo.com](mailto:spencerinthegorge@yahoo.com)



#### Norm Johnson

*Prefers Republican Party*

It is truly an honor to serve the people of the 14th district. In Olympia I have supported legislation in areas that I feel are most important: agriculture, business, education, public safety and care for the most vulnerable.

I am proud that my work has been recognized by highly regarded organizations; *Friend of Farming* by the Farm Bureau; *Appreciation*

*Award* for commitment to the developmentally disabled; *Corner Stone Award*, from Association of Washington Business; *Statement of Support Award* by the National Guard and Reserve; and *Guardian of Small Business* award by the Federation of Independent Business.

**Phone:** (509) 452-1328

**Email:** [norm@normjohnson.org](mailto:norm@normjohnson.org)

## State Partisan Office

### STATE REPRESENTATIVE 14<sup>TH</sup> LEGISLATIVE DISTRICT POSITION NO. 2



#### **Mathew K.M. Tomaskin**

*Prefers Democratic Party*

My name is Mathew K.M. Tomaskin and I am running for the 14th Legislative District Position II. As a First American growing up in Central Washington my entire life, I've had a concern about equal and fair representation in our state government from elected officials. As a Veteran of the US Army, I gained lifelong skills in responsibility, honesty, and integrity. I used these traits to

become an elected official for the Yakama Nation, and currently I am their Legislative Affairs Liaison. I would like your support in building a smarter and more effective government for our citizens. Thank You.

**Address:** PO Box 302, Wapato 98951

**Phone:** (509) 945-5911

**Website:** [www.facebook.com/MattTomaskin2012](http://www.facebook.com/MattTomaskin2012)



#### **Charles Ross**

*Prefers Republican Party*

Thank you for allowing me to be your voice in the Washington State House of Representatives for the last six years. It is a privilege I do not take lightly; an honor I very much appreciate.

Our state faces serious economic challenges. But the problems facing government are no different than those facing your family and mine.

The solution: Tighten our belts and spend money on only the most-important things. That's what I do as a private citizen and that's what I vote to do as an elected official. I hope I can count on your support. Thank you.

**Address:** Committee to re-elect Charles Ross, PO Box 996, Naches 98937; **Phone:** (509) 653-2340

**Email:** [Charlesnaches@aol.com](mailto:Charlesnaches@aol.com)

## State Partisan Office

### STATE SENATOR 17<sup>TH</sup> LEGISLATIVE DISTRICT



#### **Don Benton**

*Prefers Republican Party*

Don Benton is a small business owner, father of four, and one of our state's most principled leaders. He has a record of working across party lines to promote jobs, defend our public schools and balance the state budget.

Last year, Senator Benton supported a bi-partisan budget that balanced without tax hikes or gimmicks. It made funding schools the top priority and included long overdue reforms.

Don knows that only people create jobs, not government. He voted to ease burdensome regulations, allowing good-paying jobs to return to our community.

He opposes tolls, tax increases and the costly light rail boondoggle.

**Address:** Friends For Don Benton, PO Box 5076, Vancouver 98668; **Phone:** (360) 574-4873

**Email:** [don@donbenton.com](mailto:don@donbenton.com)

**Website:** [www.senatorndonbenton.com](http://www.senatorndonbenton.com)



#### **Tim Probst**

*Prefers Democratic Party*

Our community deserves independent, unifying, positive leadership, focused on the economy. As your State Representative, I've fought debt and spending, opposed tax hikes, and refused my own pay during special session. Working respectfully across party lines, I passed my bi-partisan economic agenda: 10,000 people in training, internships, and jobs; 3,000 scholarships for middle class families; laws cutting red

tape for businesses; lower dropout rates; WSU Vancouver's new engineering building; and training benefits for soldiers. We need measurable results and service to others, not partisan ideology. *Democrats, Republicans, Independents, I ask for your vote.* Far more unites us than divides us.

**Address:** 1111 Main Street, Suite 400, Vancouver 98660; **Phone:** (360) 989-7817

**Email:** [Tim@ElectTimProbst.net](mailto:Tim@ElectTimProbst.net)

**Website:** [www.ElectTimProbst.net](http://www.ElectTimProbst.net)



# State Partisan Office

## STATE REPRESENTATIVE 17<sup>TH</sup> LEGISLATIVE DISTRICT POSITION NO. 1



### Julie Olson

*Prefers Republican Party*

*"As a mother, businesswoman, and school board member I am concerned with the direction of government in Washington. Our state budget must be sustainable and balanced without raising taxes. We have to scale back the burdensome regulations on our businesses so that they can begin hiring again."*

As School Board President, Julie Olson found ways to do more with less without a single teacher layoff. She will go to Olympia as an experienced leader to protect our priorities and stop

the current habit of overspending, overpromising and underdelivering.

Julie Olson will bring independent, fiscally responsible and innovative thinking to Olympia.

**Address:** Friends to Elect Julie, 14300 NE 20th Avenue, D102-272, Vancouver 98686

**Phone:** (360) 546-1795

**Email:** Julie@votejulieolson.com

**Website:** <http://www.votejulieolson.com/>

**Facebook:** <https://www.facebook.com/votejulieolson>



### Monica Stonier

*Prefers Democratic Party*

As a mom, public school educator, and a taxpayer, I care more about creating jobs, improving our schools, and insuring government is transparent and accountable than partisan bickering and political theater.

In Olympia, I will push for a commonsense balanced, budget that fully funds K-12 education and preserves the safety net for seniors and most vulnerable - without raising taxes. We must

make wise investments in job training, economic growth, and support our biggest job creators – small businesses. I will always be a strong champion for low taxes, independent thinking, and listening to you. I ask for your vote.

**Address:** Elect Monica Stonier, PO Box 872634, Vancouver 98687-2634; **Phone:** (360) 901-2859

**Email:** info@votemonicastonier.com

**Website:** [www.votemonicastonier.com](http://www.votemonicastonier.com)



### Matthew Homola

*Prefers Republican Party*

I will bring youth and enthusiasm to the role of 17th District Representative. I am 38 years old, married, and a property owner, and have been a resident of Clark County all my working life. Having no connection to special interests of any kind will allow me to communicate with the voters and put forth best efforts to serve only their

needs. I am a successful senior business manager for a logistic and warehousing company located in Vancouver. And, I am a seasoned information technology developer, including accounting and control functions.

**Phone:** (360) 885-4493

**Email:** [droid@matthewhomola.com](mailto:droid@matthewhomola.com)

## State Partisan Office

### STATE REPRESENTATIVE 17<sup>TH</sup> LEGISLATIVE DISTRICT POSITION NO. 2



#### Paul Harris

*Prefers Republican Party*

Vote for Paul Harris and his *Get Washington Working* proposal for Jobs, Education and Energy! Unshackle businesses from excessive regulations, taxes and fees allowing economic progress and job creation. Fund education first and fully with a stand alone budget. Education is the primary duty of the state and should not

be dependent on tax increases. Recognize hydropower as a clean, green resource providing 70% of Washington State's electricity. Hydropower is crucial to NW industries and jobs. Paul's proposals and hard work in Olympia will get us working in Clark County. Vote for Paul Harris!

**Phone:** (360) 553-2748; **Website:** electharris.com



#### Jim Gizzi

*Prefers Democratic Party*

We need representatives that work as hard as we do.

I've been a businessperson for 24 years in telecommunications and a Clark County Planning Commissioner. I'll bring hands-on experience to pass legislation that improves the economy and gets out of the way so businesses can put people to work.

With a daughter in our public schools, I'll lead efforts to reduce class size, retain quality

teachers and improve math, science and technology curriculum.

We can do this without raising taxes. I'll demand transparency, accountability and regular performance audits so every dollar is spent wisely. I ask for your vote.

**Address:** 14300 NE 20th Avenue, Suite. D102-347, Vancouver 98686; **Phone:** (360) 723-0900

**Email:** jim@jimgizzi.com

**Website:** www.jimgizzi.com

## State Partisan Office

### STATE SENATOR 18<sup>TH</sup> LEGISLATIVE DISTRICT



#### Ralph Schmidt

*Prefers Democratic Party*

Personal: Married with two adult children; Veteran, US Air Force; Retired.

Education: BA Mathematics; MS Taxation; Designated Teaching Credential; Additional course work in Accounting, Economics, Computer Science, and Agriculture.

Experience: Over forty years working mostly in information technology; worked in private industry for small to large companies; worked

for Federal, State, and local governments; worked with Assessor, Planning, Elections, Roads, Law Enforcement, Treasurer, Health and other departments.

Message: Low income Washington taxpayers currently pay taxes at the highest possible rate; high income at the lowest. Low income should pay low or no taxes; High income should pay more.

**Email:** ralph-for-senate@hotmail.com



#### Ann Rivers

*Prefers Republican Party*

There are two parts to economic recovery: a job and your ability to keep more of your money in your pockets. Every day I've been in office, that has been my guide and my goal.

My focus: Get Washington working again with small business leading the way; a smaller, more efficient and economically realistic government. That's *our* money being spent.

Prioritizing spending to do those things

government should do: funding education, transportation, public safety and those most vulnerable who must have our help.

Together, we can make a difference. I'm Ann Rivers and I'm asking for your vote.

**Address:** Friends of Ann Rivers for State Senate 18th Legislative District; **Phone:** (360) 450-7994

**Email:** annrivers18@comcast.net

**Website:** www.annrivers.com

---

STATE REPRESENTATIVE 18<sup>TH</sup> LEGISLATIVE DISTRICT POSITION NO. 1

---



**Brandon Vick**

*Prefers Republican Party*

As a small-business leader and a long-term resident of the 18th District, I understand the challenges facing the people of southwest Washington.

I will work and advocate tirelessly to change the direction of our State. We need to foster a strong business environment so that Washington can get back to work and thrive. I am committed to reducing the size of government, reducing

spending, and providing much needed tax relief for families and small businesses. I believe I have the vision, energy and strength necessary to effectively advocate for the people of our community and I ask for your vote!

**Address:** Brandon Vick, PO Box 1434, Battle Ground 98604; **Phone:** (360) 609-4363  
**Email:** brandon@electbrandonvick.com  
**Website:** www.electbrandonvick.com



**Adrian E. Cortes**

*Prefers Republican Party*

As a city councilman and businessman with a deep background of community service, I'm well aware of the challenges facing our families. In this economy, my number one priority must be jobs and economic development. Knowing that our quality of life begins with a job, I believe in the *Families First* approach using the same fiscally conservative values we all trust in during

the hard times, living within our means. A pro-business climate, educational success for our children, safety for our neighborhoods, fiscal sanity for our government; these are my watch words. I'm Adrian Cortes... I ask for your vote.

**Phone:** (360) 608-3513  
**Email:** adriancortes@nym.hush.com  
**Website:** www.adriancortes.com

# State Partisan Office

## STATE REPRESENTATIVE 18<sup>TH</sup> LEGISLATIVE DISTRICT POSITION NO. 2



### David Shehorn

*Prefers Democratic Party*

The key to the resolution of the budget crisis is jobs. More jobs are created by increased demand for products and services. Economically sustainable growth is a delicate balance between industry incentives, training, education, mobilization of the workforce and government regulations. Understanding the industry perspective is essential to guiding the expansion and growth of demand, jobs and business

opportunities. Buying goods and services locally, when practical, enhances the local economy and business efficiency. The preservation of worker's rights, civil rights, healthcare privacy and environmental protection are essential to our continued pursuit of happiness while living in a thriving, sustainable community.

**Phone:** (360) 200-1168 (message)

**Website:** <http://electDavidShehorn.NationBuilder.com>



### Ryan Gompertz

*Prefers Democratic Party*

My name is Ryan Gompertz, and I am an alternative.

Politics as usual have failed to deliver the results we need. Rather than lose confidence, it's time for a fresh approach.

I am an alternative to politicians who talk when they should listen. A balanced and thoughtful

alternative to partisan gridlock. As a hard working independent, I will fight for a more efficient, more responsive, and less expensive government.

I don't need to tell you that times are tough, but together we are tougher.

My name is Ryan Gompertz, and I will bring a new voice to Olympia. Yours.



### Liz Pike

*Prefers Republican Party*

Our citizens feel the effects of the economy. We need a *new direction* to give our citizens a brighter future. Government should *never* hurt working families. I'll work to control spending, lower taxes, and eliminate job-killing regulations. Our children deserve the best education; I'll work to *reform* our schools *without* raising taxes.

As one of thirteen children raised on a Brush Prairie dairy farm, I learned the value of hard

work. As a business owner, I'm committed to supporting our communities and businesses and understand the importance of job creation to grow a healthy economy. *Restore Washington. Vote Liz.*

**Address:** Friends to Elect Liz Pike, PO Box 662, Camas 98607; **Phone:** (360) 281-8720

**Email:** [ElectLizPike@comcast.net](mailto:ElectLizPike@comcast.net)

**Website:** <http://LizPike.us>; **Facebook:** Liz Pike

# State Partisan Office

## STATE SENATOR 20<sup>TH</sup> LEGISLATIVE DISTRICT



**John E. Braun**

*Prefers Republican Party*

I am not a career politician and do not aspire to be one. Our elected officials should set priorities -- go to Olympia, get the job done, and go home. This election is about the future. It is about new leadership.

My wife and I have four children, and I am concerned about the future of our state. Olympia has lost touch with the people. You can be

assured that I won't lose touch with the voters. My priorities are to create jobs, lower taxes, eliminate government waste and improve student achievement.

I ask for your trust, support and vote.

**Address:** John Braun, PO Box 234, Chehalis 98532; **Phone:** (360) 508-6540  
**Email:** info@johnbraunforsenate.com  
**Website:** www.JohnBraunforSenate.com



**Dan Swecker**

*Prefers Republican Party*

Senator Dan Swecker was a US Army helicopter pilot, Vietnam veteran and recipient of the Bronze Star, Purple Heart and Air Medal. He received a B.A. and owned and operated Swecker Salmon Farm, Inc. for 20 years. He now works for the Washington Fish Growers Assn.

Dan helped lead this year's coalition that created a fiscally responsible budget and reduced the deficit by more than a billion dollars without raising taxes or using gimmicks.

Dan's goals are to create family wage jobs, develop a sustainable budget, protect property rights, and help improve public schools. Re-elect Dan Swecker for Senate.

**Address:** Dan Swecker for Senate Campaign, 10420 173rd Avenue SW, Rochester 98579  
**Phone:** (360) 273-5890  
**Email:** dan@danswecker.com  
**Website:** www.danswecker.com



**Rae Lowery**

*Prefers Republican Party*

Most of my life, I was not interested in politics. When I did become interested, I was disgusted by it. I did not even belong to a political party until 6 months ago.

So why am I now running for the Senate? I realized that if everyone with integrity and strong ethics felt as I did, there would never be people who were worth voting for. I love my country and

I don't like the direction it is taking. I want to do what I can to put it right. Thank you for your support, and for your vote.

**Phone:** (360) 750-7035  
**Email:** SenatorLowery@yahoo.com  
**Facebook:** www.facebook.com/profile.php?id=100003785548672

# State Partisan Office

## STATE REPRESENTATIVE 20<sup>TH</sup> LEGISLATIVE DISTRICT POSITION NO. 1



**Richard DeBolt**

*Prefers Republican Party*

It's been an honor to serve the people of the 20th District since 1997. I am equally pleased the new district boundaries will allow me to serve the communities of north Clark County. We share priorities important to all Southwest Washington families. My commitment has been, and will be to you, to get Washington working again.

I will continue to fight to make government

live within its means while providing sustainable funding for education, public safety and our most vulnerable citizens.

I am asking for your vote to make our state and communities a great place to live and work.

**Address:** Richard DeBolt, 1673 S Market Street, Suite 159, Chehalis 98532  
**Phone:** (360) 219-7072  
**Email:** arnydvs@gmail.com

## State Partisan Office

### STATE REPRESENTATIVE 20<sup>TH</sup> LEGISLATIVE DISTRICT POSITION NO. 2



#### John Morgan

*Prefers Republican Party*

I seek office to address regulations and the critical issues of employment, education and health care from the perspective of the members of my community. It will require fiscal discipline and firm resolve to balance the budget without an additional burden on our state's taxpayers to protect jobs, education and ensure access to affordable health care.

The regulatory recession forcing our local

employers out of business must be addressed. We must protect a balanced economic base through responsible fiscal policy. As your legislator, I will work to implement reforms such as zero-based budgeting and respecting the state's debt limit.

**Address:** John Morgan, PO Box 500, Rochester 98579; **Phone:** (360) 273-8896

**Email:** johnmorgan4stcongress@hotmail.com



#### Ed Orcutt

*Prefers Republican Party*

Representative Ed Orcutt has earned a reputation as an effective, independent leader who works hard to make things happen for the families in his district.

After earning his B.S. degree in forest management, Ed Orcutt has worked as a forestry consultant for over 22 years – owning his own company since July 2009. Ed is a leader in protecting forestland owners, natural resource jobs, and our quality of life.

Representative Orcutt's priorities include working to create more family-wage jobs, to balance budgets within existing means, and to fund basic education – first.

Keep Ed Orcutt working as our state representative!

**Address:** Committee to Re-elect Ed Orcutt, PO Box 1280, Kalama 98625; **Phone:** (360) 751-2317

**Email:** electEdOrcutt@kalama.com

**Website:** www.repedorcutt.com

## State Partisan Office

### STATE SENATOR 49<sup>TH</sup> LEGISLATIVE DISTRICT



#### Eileen Qutub

*Prefers G.O.P. Party*

I was raised in Vancouver. Today, I am deeply concerned with our state's financial stability, its relentless appetite for growth, reckless spending and disregard for the people's money. Leadership in Olympia isn't providing an environment for small businesses to flourish and create jobs that allow families to prosper.

As I did in the Oregon Legislature, I will work to eliminate burdensome obstacles that are stifling

job growth while keeping taxes low. I support full funding of education, but with reforms that steer more money to kids at the classroom level, and foster academic excellence. I humbly ask for your vote.

**Address:** PO Box 65824, Vancouver 98665

**Phone:** (360) 232-6709

**Email:** eileenqutub@gmail.com

**Website:** EileenQutub.com



#### Annette Cleveland

*Prefers Democratic Party*

A Vancouver native, Annette will bring 3 decades of private and public sector experience to Olympia. This experience includes work for the Vancouver Chamber assisting businesses, at C-TRAN protecting transit, and with Senator Patty Murray on WSU Vancouver funding, transportation priorities and services for veterans and military families. Annette knows how to work at all levels of government to get results. As our

State Senator, Annette will build on her record of common sense, community-driven service. With Annette's deep understanding of our community and proven record of collaboration, let's put her lifetime of experience to work for all of us!

**Address:** Annette Cleveland for State Senate, 1111 Main Street, Suite 400, Vancouver 98660

**Phone:** (360) 975-1914

**Email:** info@annettecleveland.com

**Website:** www.annetteclevelandforsenate.com

## State Partisan Office

### STATE REPRESENTATIVE 49<sup>TH</sup> LEGISLATIVE DISTRICT POSITION NO. 1



#### Sharon Wylie

*Prefers Democratic Party*

After my appointment, the voters elected me to continue as your State Representative. Creating jobs, preserving education and protecting our elderly, disabled and children are my priorities and were reflected in the balanced budget we passed. Our *Jobs Now* Package creates 20,000 new jobs.

I have proven skills and a passionate commitment to fight for internal government reforms,

cost savings and a fair and sustainable tax system to fund our priorities. I am a mom, a wife and a grandmother who believes in public service. We *can* have a strong economy and compassionate communities. I ask for your vote.

**Address:** Committee to Elect Sharon Wylie, 1111 Main Street, Suite 400, Vancouver 98660

**Website:** [www.sharonfor49th.com](http://www.sharonfor49th.com)



#### Debbie Peterson

*Prefers Republican Party*

Since 2004, I have advocated for taxpayers! Last December, I asked the County Commissioners to deny a 2012 - 1% property increase. They unanimously supported my request. Currently, I am a member of the Smarter Bridge Coalition. I have met with Oregon/Washington lawmakers, working on retaining the existing I-5 Bridge and establishing another, economical bridge, across the Columbia River.

I am asking for the support and votes of the great citizens of the 49th District. I will continue to work as hard for you, in Olympia, as I have, here in Vancouver. Thank you so much for your vote.

**Address:** Committee To Elect Debbie!, PO Box 872204, Vancouver 98687

**Phone:** (360) 356-4437

**Email:** [Debbie@debbiepeterson.org](mailto:Debbie@debbiepeterson.org)

**Website:** [www.debbiepeterson.org](http://www.debbiepeterson.org)

## State Partisan Office

### STATE REPRESENTATIVE 49<sup>TH</sup> LEGISLATIVE DISTRICT POSITION NO. 2



#### Carolyn Crain

*Prefers Republican Party*

Our voices are not respected. I attend city and county meetings regularly and watch state issues. In 6 years our education budget doubled yet our State Supreme Court ruled we haven't properly funded it. Why? While actual dollars to education increased, its percentage of total revenue fell.

We're losing: freedom due to land and water

use regulations; money due to increased taxation for benefit of special interest; lack of access to healthcare due to low Medicaid payments. The incumbent is suing us over our 2/3 majority vote to raise taxes. As your advocate, I won't sue you!

**Phone:** (503) 984-5659

**Email:** [hazel\\_x2@comcast.net](mailto:hazel_x2@comcast.net)

**Website:** [votecarolyn.com](http://votecarolyn.com)



#### Jim Moeller

*Prefers Democratic Party*

Protect the vulnerable, educate the young and build a strong economy: these are my priorities as your State Representative. Basic infrastructure projects directly created new jobs, while the improvements are attracting new employers. Fiscal discipline has been delivered responsibly, without cutting K-12 or shredding our safety net. I reinstated enforcement of state vehicle tag laws to crackdown on scofflaws. Let's work

together to build a better economy, less vulnerable to boom and bust, and made stronger by our values: *equality and opportunity for all*. Together we can make Vancouver even better for the next generation.

**Address:** The Committee to Elect Jim Moeller, 1701 Broadway #328, Vancouver 98663

**Phone:** (360) 904-3377

**Email:** [electjim@jimmoeller.org](mailto:electjim@jimmoeller.org)

**Website:** [www.jimmoeller.org](http://www.jimmoeller.org)

# County Partisan Office

## CLARK COUNTY COMMISSIONER DISTRICT NO. 1



**Robert (Bob) Freund**

*States No Party Preference*

Clark County needs a change in how we support and help each other to be successful. I'm not a politician who will be swayed and influenced by higher-ups and side with their position. I'm a small business owner and everyday guy who feels they are getting pushed over and micro-managed by government.

Clark County was made great by the people of the community. It's time to take control of

where we live and create our own vision of Clark County. I want to be elected to be your voice and your opinion on the changes that will benefit all residents.

**Website:** Bobfriend.com

**Website:** Bobfreund.com



**Darren S. Wertz**

*Prefers Republican Party*

Honest, Educated, Experienced, Decorated Army Veteran fully engaged in the community focused on making government serve the people rather than my political career.

Capable and 100% Committed to good sense, fiscal responsibility and the well being of my neighbors in Clark County.

Strong advocate of private property rights while protecting others' investment in the

neighborhood.

Believe we are put here to work and to manage with care what we have. To enjoy creating a better place, a better life.

I ask for your vote and promise my professional, effective best in return.

**Phone:** (360) 910-6270

**Email:** DarrenWertz.1ClarkWa@Gmail.com

**Website:** DarrenWertz1ClarkWa.com



**Ron Barca**

*Prefers Democrat Party*

Do you like how Clark County has changed over the past 20 years? If not, help me change the status quo. Over-regulation and unresponsive government are destroying Clark County and driving business away. At my job, I am trained to reduce roadblocks and red tape. Unlike career politicians, I can do the same for Clark County. My plan will lead to a balanced economy, encourage small businesses, save farms and forests,

ensure rural areas stay rural, and make government work for the people, not special interests. Vote Ron Barca for County Commissioner and make Clark County work for *us* again.

**Address:** Ron Barca for Clark County Commissioner Dist. #1, 1111 Main Street, Suite 400, Vancouver 98660; **Phone:** (360) 566-7735

**Website:** www.ronbarca4clarkcounty.com

**Facebook:** www.facebook.com/RonBarcaForCountyCommissioner

*Turn to the next page to view additional candidates for this office.*



## CLARK COUNTY COMMISSIONER DISTRICT NO. 1



### Tom Mielke

*Prefers Republican Party*

Tom Mielke, successful retired businessman of 18 years (employing 35 families) and 8-year State Representative, is running to be re-elected your County Commissioner.

Tom has been the only voice for the people on the commission and on the C-TRAN board, fighting tolls and light rail while demanding a county-wide vote.

Successful at reducing County regulations and business strangling fee structures, Tom realizes

the urgent need for jobs in Clark County and is focused on economic development.

Decorated Vietnam Combat Veteran, father & grandfather, Tom resides in rural Battle Ground.

Voter tested and approved, Tom is again asking for your vote.

**Address:** Tom Mielke For County Commissioner, PO Box 2503, Battle Ground 98604

**Phone:** (360) 608-6201

**Email:** district18rep@msn.com

**Website:** www.TomMielke.com



### Joe Tanner

*Prefers Democrat Party*

*It's All About Jobs!*

Joe Tanner is a longtime local small businessman, decorated Vietnam veteran, Eagle Scout, former State Senator, proud husband of 42 years, father, and grandfather.

Joe delivers results. In the legislature he fought for WSU-Vancouver, to eliminate sales tax on manufacturing, and built a strong bi-partisan reputation. As President of the Economic Development Council, Joe helped land thousands

of new family wage jobs.

Put Joe back to work for you, fighting for good jobs, adding taxpayers rather than taxes, protecting private property rights, and enhancing our quality of life.

Joe welcomes your suggestions and appreciates your vote.

**Address:** 1111 Main Street, Suite 400, Vancouver 98660; **Phone:** (360) 910-1600

**Email:** Joe@VoteJoeTanner.com

**Website:** www.VoteJoeTanner.com

# County Partisan Office

## CLARK COUNTY COMMISSIONER DISTRICT NO. 2



### Pat Campbell

*States No Party Preference*

Inaction due to partisan and religious extremism is not an option for Clark County where budgets are required by law to balance and essential services fairly delivered.

Pat Campbell with his proven record on Vancouver City Council will study the issues thoroughly and bring a collaborative approach to the three-member Board of Clark County Commissioners. His decades of public service and

life experience provide a deep well to draw from when addressing the difficult issues we face.

Government needs to deliver its services equitably while using our taxes efficiently. Pat will do both without partisan drama or sectarian preference.

**Address:** PO Box 873206, Vancouver 98687

**Phone:** (360) 904-0815

**Email:** patcampbell@patservesus.com

**Website:** www.PATSERVESUS.com



### David Madore

*Prefers Republican Party*

As founder of US Digital, I built a prospering and thriving debt free business that provides over 100 great Clark County jobs. My desire is for all of our citizens to prosper and thrive. As your Commissioner, I commit to use proven leadership principles to shape a business-friendly environment, free of abusive taxes, burdensome fees, and inappropriate government regulations. Funding for the flawed CRC-light rail project should be withdrawn. We must make it easy and affordable for businesses to create precious jobs.

Vote to elect David Madore for Commissioner and re-elect Commissioner Tom Mielke. Let's get Clark County working again!

**Cell phone:** (360) 601-3056

**Email:** David@DavidMadore.com

**Website:** www.DavidMadore.com

**Public Facebook:** www.facebook.com/DavidMadorePublic

**Personal/family Facebook:** http://www.facebook.com/DavidMadore2

**Media site:** www.COUV.com



### Marc Boldt

*Prefers Republican Party*

Jobs – A word used by many, but rarely backed by action. I have acted, and I believe we stand at the door of opportunity because of my actions.

First, I have provided needed land zoned for jobs. Also, I have, and will *fight* regulations that take time and money regardless of the outcome through Department of Ecology and other agencies.

I also led for our promising future, creating our WSU/county heritage farm, a regional health alliance, a plan to make our county a leader for our aging population, and others.

Thank you for your vote of confidence. God bless.

**Phone:** (360) 256-9025

**Email:** dawn.boldt@gmail.com

**Website:** www.marcboldt.com



### Roman Battan

*Prefers Democrat Party*

I'm Roman Battan and I ask for your vote to be the next District 2 County Commissioner. I believe we need new leadership that encourages open dialogue with citizens and operates efficiently with taxpayer dollars. With over \$500 million in revenue our county has the resources to provide essential services without raising taxes.

Clark County is a great place to call home, but it should also be a great place to work. I

believe that by streamlining county operations, prioritizing budget items, and being transparent with citizens, we can create an environment that supports a healthy community and growing economy.

**Phone:** (360) 513-9490

**Email:** roman@electromanbattan.com

**Website:** www.electromanbattan.com

**Facebook:** www.facebook.com/electromanbattan

# State Nonpartisan Office

## STATE COURT OF APPEALS DIVISION 2, DISTRICT 3 JUDGE - POSITION NO. 1

### Joel Penoyar

*Nonpartisan*

At thirty-six years, Joel Penoyar is the longest serving judge in the state.

Joel and Betsy, raised 5 children and have been active in Soccer, Boy Scouts, Girl Scouts, and numerous other organizations. Joel is a volunteer firefighter, first responder and youth track coach.

Judge Penoyar says, "It is a mistake for judges to attempt to mold the law to fit their own

personal or political beliefs. More important than a *judicial philosophy* is a judicial work ethic: I work hard to write decisions that are understandable, correct, complete and that make sense in our real world."

Joel Penoyar

**Phone:** (360) 875-6342

No photo submitted

# County Nonpartisan Office

## CLARK COUNTY SUPERIOR COURT JUDGE - DEPARTMENT 2

### John P. Wulle

*Nonpartisan*

Judge John Wulle has been a Judge for 15 years, first as a District Court Judge and now on the Superior Court Bench. Superior Court Judges have a varied and large case load. It is important for a Judge to have experience in all areas of the law. Judge Wulle has that in-depth knowledge of the various areas of law: Criminal, Civil and Family Law. Judge Wulle has proved he has the

work ethic it takes to do the job. The Judge is endorsed by law enforcement. Judge Wulle deserves your vote for another 4 year term.

**Email:** judgejohnwulle@comcast.net

**Website:** www.judgejohnwulle.com



### David E. Gregerson

*Nonpartisan*

It is time for new leadership in Department 2 of Clark County Superior Court.

David Gregerson understands the privilege and honor of public service, and will treat everyone in court with dignity, respect, and fairness.

A lifelong resident of Clark County, David is a civic leader with deep family and business roots. With 20 years experience as a trial attorney, and presiding over hundreds of cases as Judge Pro Tempore, David Gregerson has the integrity,

knowledge and judicial temperament to be our next judge.

Exercise your right to choose judicial representation by electing a proven community leader. Vote David Gregerson!

**Address:** Committee to Elect David Gregerson, 415 E. 17th Street, Vancouver 98663

**Phone:** (360) 904-1500

**Email:** degregerson@gmail.com

**Website:** www.gregersonforjudge.com



# County Nonpartisan Office

CLARK COUNTY SUPERIOR COURT JUDGE - DEPARTMENT 8



## Josephine (Josie) Townsend

*Nonpartisan*

A judge has the sacred responsibility of making decisions that significantly impact people's lives. These decisions can determine your freedom and liberty, guilt or innocence, property and parental rights, and much more. Given the importance of these decisions, we have the right to expect that our elected leaders, and especially judges, consistently practice and display the fundamental values of *fairness, equality, and justice* to all people.

I am committed to achieving fairness, equality, and justice when making decisions that will affect your lives. I would be honored to have the privilege of serving you as Clark County Superior Court Judge.

**Address:** Committee to Elect Josephine (Josie) Townsend, Superior Court Judge, 211 E. 11th Street, Suite 104, Vancouver 98660

**Phone:** (360) 694-7601

**Email:** JCTownsend@aol.com

**Website:** www.JosieforJudge.com



## Diane M. Woolard

*Nonpartisan*

Judge Diane Woolard has served since July 2000, presiding over countless cases involving family law, adoptions, terminations, and protection of persons in need, guardianships, civil litigation and numerous felonies. Judge Woolard received a plaque from Superior Court for her years of service presiding over drug court.

Judge Diane Woolard has endeavored to serve on the bench in an ethical and professional

manner. She has balanced the demands of justice and the rights of all individuals while trying to ensure a safe community. Judge Woolard will be honored to continue to serve as your Superior Court Judge and the public.

**Phone:** (360) 901-0828

**Email:** dianemw@comcast.net

**Website:** www.judgedianewoolard.com



**Jim Malinowski**

*Nonpartisan*

I was raised in Clark County, am active in the community, and have regularly attended PUD Board Meetings for many years prior to this election. As an electric power engineer and Clark College Power Utilities Technology Program Manager and Instructor, I have the background to understand the complex electric and natural gas markets that affect 70% of our power bills. With

my strong technical background and knowledge of utility operations, I will be able to represent your interests on the board that oversees our customer-owned utility district. I will work to keep rates stable and low as possible.

**Address:** PO Box 127, Amboy 98601

**Phone:** (360) 247-6404

**Email:** j.malinowski@ieee.org

**Website:** <http://jim-malinowski.com/>

---



**Julia Anderson**

*Nonpartisan*

I am running for Clark Public Utilities Commissioner because I care. Count on me to ask constructive questions and get clear answers to preserve low-cost power and water for all utility customers. But my mission is about more than power rates.

With 26 years of leadership experience in your community as a professional journalist covering business, energy, and the economy, I have the

skills to get things done. I know how to make decisions that will balance livability with job creation on behalf of you - the owners of our public-power utility.

I would be honored to have your vote.

**Address:** Committee to Elect Julia Anderson, Clark County Public Utilities Commissioner, 15211 NE Grinnell Road, Woodland 98674

**Phone:** (360) 263-0496

**Website:** [www.ElectJuliaAnderson.com](http://www.ElectJuliaAnderson.com)

---



**David Campos**

*Nonpartisan*

For eight years, I have served local businesses from two of Clark County's largest member-owned financial institutions. I have watched as many of our county's job creating small businesses have had to adapt and change to an ever-more difficult environment. I am committed to job creation and removing government imposed barriers that limit growth. I will fight for lower

costs and improved service. We have all had to cut back and learn to do more with less. Small government starts at home - I am ready to bring practical private sector financial experience to your member-owned utility.

**Email:** [dave@votecampos.com](mailto:dave@votecampos.com)

**Website:** [www.votecampos.com](http://www.votecampos.com)

**Facebook:** vote dave campos

---

*Turn to the next page to view additional candidates for this office.*

## Public Utility District Nonpartisan Office

PUBLIC UTILITY DISTRICT No. 1 OF CLARK COUNTY **COMMISSIONER** DISTRICT NO. 1**Philip A. Parker***Nonpartisan*

I pledge to work for low cost, long term, reliable public power. This can be accomplished through conservation, efficiency of operations and prudent use of renewable power sources. I believe you can judge leadership by past performance. I am a retired electrician who serves the community on the SW Washington Workforce Development Board and the State Transportation Commission. I am a former member of the

State Electrical Board and the WSUV and Clark College advisory boards. I understand and respect working family values and offer my experience, leadership skills and commitment to teamwork to make your PUD even better.

**Address:** Parker for PUD, PO Box 2883, Battle Ground 98604; **Phone:** (360) 687-0242

**Email:** parker4PUD@gmail.com

**Website:** www.parker4PUD.com

**Jim West***Nonpartisan*

I'm Jim West; I pledge to work for you the customer-owners of Clark Public Utilities.

My first priority - set the standard for the Utility leadership to be good fiscal stewards with our money.

Our traditional low cost power is in question. I'll advocate for more conservation and energy efficiency programs along with practical – common sense economic policies from our state and

federal partners so we can create jobs and improve liveability.

Our Utility is nationally recognized for customer service and operational excellence! Let's all support their efforts to continue to perform at these high levels. Vote Jim West.

Friends of Jim West

**Phone:** (360) 609-0749

**Email:** info@electjimwest.com

**Website:** www.electjimwest.com

**Sherry Erickson***Nonpartisan*

Do you want affordable utilities? Put my BYU mechanical engineering degree, WSU MBA, and consulting experience to work for you! I will scrutinize financial statements, promote cost-based rates, explore power supply alternatives, insist on accurate billing, initiate technology upgrades, hedge risk, and closely monitor performance. Customers want reliable distribution, efficient operations and a competent work-force. I have

the qualifications to keep CPU on track with innovative operating principles that are important to you. I love Clark County. I'll naturally protect our resources by supporting conservation education, renewable energy and community service. Choose the most capable candidate. Vote for Sherry Erickson!

**Email:** sherryericksonPUD@gmail.com

**Facebook:** Sherry Erickson, PE, MBA for Clark PUD Commissioner

**Helen Nowlin***Nonpartisan*

As an attorney and a mother of four children I am a proponent for the public, not *Big* business or the banks. With degrees in science and international environmental law, I am knowledgeable about energy and environmental law and policy and managing risk and liability. Please vote for the person who can address the new issues that will come to dominate the Utility's business activities, like broader market distribution

problems, conversion to alternate, non-carbon based energy sources and the added pressures of balancing growing demand with more, inevitable climate based initiatives. I would be honored to serve you!

**Address:** Helen Nowlin, 2406 NE 139th Street, #63, Vancouver 98686; **Phone:** (360) 635-6437

**Website and Facebook:** www.electhelennowpud.com

# Ballot measure



## City of Camas

### PROPOSITION NO. 1

#### EMERGENCY MEDICAL PROGRAM EXCESS LEVY

Shall the City of Camas levy an emergency medical services property tax levy of \$0.46 per \$1,000.00 of assessed valuation for six (6) consecutive years commencing in 2013 with the proceeds thereof to be used to continue provision of emergency medical services?

Tax Levy, Yes

Tax Levy, No

#### Explanatory statement

The City of Camas seeks voter approval for the Emergency Medical Services (EMS) Levy. The levy is subject to voter approval every 6 years. Voter approval would increase property tax rates in 2013 from .35 cents to .46 cents per \$1000 assessed property value. The levy is used to maintain advanced emergency medical services, purchase ambulances and equipment, maintain training, hire personnel, and continue community programs such as First Aid and CPR classes.

### Statement for:

The citizens' committee recommends voter approval of the Emergency Medical Services (EMS) Levy. Please vote yes!

#### Levy History:

Since 1979, this EMS program has provided Camas with an enhanced level of emergency services. The EMS program includes: ambulance transport, dual function paramedic/firefighters, continuous training for personnel, community training, and training for other jurisdictions and businesses. The EMS program continues to improve service to the community and was recently recognized as one of the top five paramedic services in the U.S. and Canada in cardiac arrest survival rates. The continued EMS levy approval by the voters every six years supports these efforts.

#### Levy Assessment:

The number of EMS calls over the past six years has increased by 20 percent, federal Medicare reimbursements for services provided have been reduced, and the recession has decreased property valuations. These factors and the increased costs of providing quality emergency medical services necessitate and increase in the levy rate from thirty-five cents to forty-six cents per thousand dollars of assessed property value. The levy will make the fund

sustainable and continue to provide the funds to support the replacement of ambulances and equipment, offset rising fuel costs, continue mandated training, continue community CPR and First Aid Training, and provide training to our partners in neighboring jurisdictions.

#### Benefits Provided:

Dual function paramedic/firefighters, local low cost ambulance transport service compared to private companies, community programs, enhanced level of service and training to regional partners. We ask for your support; please vote yes!

#### Written by:

Committee in Support of Levy

#### Members:

Monte Brachmann, Chair

Brent Erickson, Sean Guard

*No statement against was submitted.*



proud past, promising future

CLARK COUNTY  
WASHINGTON

Auditor's Office  
Elections Department  
PO Box 8815  
Vancouver WA 98666-8815

NONPROFIT ORG.  
U.S. POSTAGE  
**PAID**  
PORTLAND, OR  
PERMIT No. 1345

ECRWSS

## RESIDENTIAL CUSTOMER

# Complete text of measures

### ORDINANCE NO. 2646

AN ORDINANCE providing for the submission to the voters of the City of Camas of a proposition authorizing an excess property tax levy at the rate of \$0.46 per \$1,000.00 of assessed valuation for six (6) consecutive years commencing in 2013 for the purpose of funding an Emergency Medical Services Program.

WHEREAS, the City of Camas has, in conjunction with the City of Washougal, Clark County Fire Protection District No. 1, and Clark County Fire Protection District No. 9, operated a combined Emergency Medical Services Program, and

WHEREAS, the funding for said program expires at the end of 2012 and additional funds will thereafter be required to continue said Emergency Medical Services Program, and

WHEREAS, Clark County Fire Protection District No. 1 and Clark County Fire Protection District No. 9 have combined into one fire district, and

WHEREAS, the elected officials of said cities and the fire district have agreed that it will be desirable to continue such Emergency Medical Services Program, and

WHEREAS, there will not be sufficient funds from general taxation to pay the City's pro-rata share of the cost of said Emergency Medical Services Program, and

WHEREAS, it will be necessary to submit a proposition to the voters of the City of Camas for an excess property tax levy as authorized by RCW 84.59.069, now, therefore,

THE COUNCIL OF THE CITY OF CAMAS DO ORDAIN AS FOLLOWS:

#### Section I

The Council of the City of Camas hereby declares a need exists requiring the calling of an election, and the County Auditor of Clark County, Ex-Officio Supervisor of Elections for said county, is hereby requested to find and declare the existence of a need for an election. Said County Auditor is further requested and directed to call and conduct an election in the City of Camas in the manner provided by law, to be held therein on August 7, 2012, between the hours of 7:00 a.m. and 8:00 p.m. (Pacific Daylight Time) for the purpose of submitting to the electors of the City of Camas for their approval or rejection, a question

whether or not a tax levy shall be made upon all the taxable property within the limits of the City of Camas at the rate of \$0.46 per \$1,000.00 of assessed valuation in excess of the maximum tax levy provided by law for Non-Charter Code Cities, the proceeds thereof to be used for the sole purpose of continuing the operation and maintenance of the Emergency Medical Services Program.

#### Section II

The "Ballot Title" of the aforesaid proposition shall be as follows:

#### PROPOSITION NO. 1

#### EMERGENCY MEDICAL PROGRAM EXCESS LEVY

Shall the City of Camas levy an emergency medical services property tax levy of \$0.46 per \$1,000.00 of assessed valuation for six (6) consecutive years commencing in 2013 with the proceeds thereof to be used to continue provision of emergency medical services?

Tax Levy, Yes       Tax Levy, No

The City Clerk is hereby authorized and directed to certify said proposition to the Supervisor of Elections for Clark County, Washington, forthwith and as provided by law.

#### Section III

The County Supervisor of Elections and/or the City Clerk is hereby authorized, directed and empowered to cause notices of such election to be given for the time and in the manner and form provided by the laws of the State of Washington, and the ordinances of the City of Camas, and to take all other steps necessary and proper to bring about and carry on such election.

#### Section IV

This Ordinance shall take force and be in effect five (5) days from and after its publication according to law.

PASSED BY the Council and APPROVED by the Mayor this 2nd day of April, 2012.

SIGNED: Scott Higgins (Mayor)

ATTEST: Joan M. Durgin (Clerk)

APPROVED as to form:

SIGNED: Shawn MacPherson (City Attorney)