

SEPTEMBER 14, 2004 PRIMARY ELECTION

Official local voters' pamphlet for Clark County

| | |
|------------------------------------------------------------|----|
| Letter from the county Auditor..... | 2 |
| Please vote: It's simple | 3 |
| Background information on the 2004 primary election..... | 3 |
| NEW! Polling place voting instructions | 4 |
| NEW! Absentee ballot voting instructions | 6 |
| Be an informed voter. Here's how..... | 9 |
| How partisan candidates appear on the election ballot..... | 10 |
| Democratic Party candidate statements | 11 |
| Republican Party candidate statements | 17 |
| Libertarian Party candidate statements | 23 |
| Nonpartisan candidate statements | 25 |
| The office of the Precinct Committee Officer..... | 26 |
| Absentee ballot application form | 26 |
| Ballot measures | 27 |
| Complete text of local measures | 35 |

**THE PRIMARY ELECTION HAS CHANGED.
MAKE SURE YOUR VOTE IS COUNTED.**

**FIRST
Pick your party.**

**THEN
Pick your ballot.**

**AND
Remember to vote for nonpartisan
offices and issues.**

Pick a party. Pick a ballot. Don't forget the nonpartisan offices and issues.

Dear Clark County Voters,

Washington state has a new primary. In order to ensure that your votes are counted, I encourage you to take a few moments to read the instructions on how to cast a ballot. These instructions can be found on pages 4 to 8 of this Voters' Pamphlet; they will also be included with your absentee ballot and will be available at each polling place.

You will be provided four ballots (Democratic, Republican, Libertarian, and Nonpartisan). You must select and mark your choices on only one of these ballots. Candidates for nonpartisan offices and any local measures that you are eligible to vote on are also included on the political party ballots. If you vote more than one political party ballot your votes for political party candidates may not be counted.

You are not required to publicly declare an affiliation with any political party in order to participate in the primary, and no record will be kept of which ballot you select to vote.

These changes apply only to the primary. For the general election you will be given one ballot and you may vote for the candidate of your choice without respect to that candidate's political party affiliation. The process of voting for nonpartisan races and ballot measures is also not affected.

We are conducting this year's primary and general election with the same punch-card voting system that has been used successfully in Clark County for many years. Before the end of 2005, we plan to implement a replacement voting system that conforms to recent federal legislation.

This locally prepared and funded Voters' Pamphlet contains information about candidates running for local and regional offices. It does not include information about candidates for statewide offices. Information about these candidates can be found on the Secretary of State's Web site at www.secstate.wa.gov/elections. In addition, the Administrative Office of the Courts will be inserting a Judicial Voter Information pamphlet in The Columbian newspaper. The information in this pamphlet is also available on the Secretary of State's Web site.

Since January 2003 the federal government has required citizens who are registering to vote to provide their driver's license number or the last four numbers of their Social Security number. Earlier this summer registered voters who have not yet provided that identification received a letter from the County Elections Department requesting that information. Voters who have not provided that information will be required to provide that identification at the polling place or to be returned with their absentee ballot before their votes can be counted.

The changes described above are the result of judicial decisions and actions by the state and federal governments. The changes are not the fault of the Election Board workers. These workers have received training in how to administer the new primary, but it is as big a change for them as it is for voters. The Election Board workers are an essential part of the election process and work at least 14 hours at the polling places on the day of the primary for nominal pay. If you visit a polling place, I ask you to appreciate that the board workers are trying as hard as they can to make sure you receive the ballot you are entitled to and that your vote is counted. Please be tolerant of any delays that you might experience at your polling place.

If you have questions regarding the new Washington Primary or other election-related questions, you can obtain information at www.clark.wa.gov/elections or by calling the Elections Department at 397-2345.

Please take a moment to read the instructions to ensure we are able to count all the votes you intended to cast.

To find your polling place for this election, please visit our Web site at www.clark.wa.gov/elections or call the Elections Department at 397-2345. This information is also printed on the voter registration identification card which our office sends to each voter.

Sincerely,

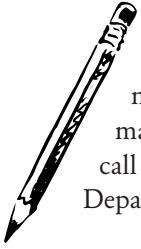


Greg Kimsey
Clark County Auditor

Participating jurisdictions:

Congressional District; Legislative Districts; Clark County; City of Washougal; School Districts, Camas No. 117, Ridgefield No. 122; and Fire Protection Districts, No. 3, No. 6, No. 10, No. 11, No. 12.

Please vote: It's simple.



Registering to vote

Registering takes only a few minutes and you can do it by mail. To register to vote, please call the Clark County Elections Department at (360) 397-2345.

Who is eligible to vote

The requirements for registering to vote are simple. You must be a United States citizen, 18 years or older, and live in Clark County 30 days prior to the election.

How to vote

At the polls - The actual voting process is easy. Upon registration, the Elections Department issues each registered voter a card that states his or her precinct number and place to vote. Most of the

polls are located in area schools. Arriving at the polls – they open at 7 a.m. and close at 8 p.m. – you'll be asked to sign the poll book roster. In Clark County, voting is done by punch card. Just punch in your choices. The entire process takes only a few minutes.

By absentee ballot - Drop your ballot in the mail or at the Elections Department.

A word about the primary election

Polling places will be open for this election. You will need to go to your polling place to vote, unless you are an absentee voter. Permanent absentee voters will receive their ballot by mail.

Absentee ballots

To obtain an absentee ballot, please call the Elections Department at (360) 397-2345. Or you can fill out the form on page 26, cut it out, and either mail it to the Elections Department or drop it by. Our address is 1408 Franklin Street, Vancouver. Mail to PO Box 8815, Vancouver WA 98666-8815.

Permanent absentee ballots

You can vote by absentee ballot on a permanent basis. Any voter is eligible to receive an absentee ballot by mail for every election. If you would like a permanent absentee ballot, please mark the appropriate box on the form on page 26.



Background information on the **2004 primary election**

Why are we changing?

Both of the major political parties successfully went to court and challenged the way we conduct our partisan primary elections. A law was passed this year creating a new primary system because of the court challenge.

Why are there four ballots?

There is a separate ballot for each major political party (Democrat, Republican, and Libertarian) and one additional nonpartisan ballot for unaffiliated voters. In the September primary election you will be able to choose only one (1) of the four ballots on which to vote.

Your choice of ballot is done privately with no record made or kept of which ballot you vote. However, choosing a political party ballot infers support for that party.

Each political party ballot also includes nonpartisan races and local measures.

What do I do with the unused ballots?

After voting one of the four ballots, discard the remaining three. If you vote an absentee ballot, tear the unused ballots in half and throw them away. If you vote at the polls, return the three unused ballots to the election workers to be set aside, voided, and returned to the Elections Department.

What happens if I vote for people in different parties?

If you vote for candidates in different political parties by voting on more than one ballot, none of the votes for any candidate associated with any major po-

litical party will be valid. If you vote for more than one party, we are not allowed to count any of your party votes.

What are nonpartisan ballots?

A nonpartisan ballot is available for voters choosing not to participate in a political party primary. The nonpartisan ballot has no political party candidates or offices, just the nonpartisan races and local measures.

This ballot does not have any positions on it that are affiliated with a political party (i.e. it doesn't have U.S. Senator, Governor, State Representatives, or County Commissioners). You may use this option if you don't choose a party ballot.

Polling place voting instructions *Poll*

Voting in a partisan primary election has changed. The actual process is the same, but there are more choices to make.

To make sure that your vote is counted you need to follow the steps below when you go to your polling place to vote.

When you arrive at the polling place:

- An election worker will ask your name and the number of your voting precinct.
- You will need to sign your name in the Poll book roster.
- Then you will be given:
 - a gray secrecy envelope containing four different ballot cards,
 - a gold-colored secrecy envelope with nothing inside, and
 - the *Voting Guide* containing a voting instruction sheet and candidate names.

1 In the voting booth, read the *Voting Guide*.

It contains four sections. Three show information about the political parties and one has the information about the nonpartisan offices, judicial offices, and local measures.

2 Take all four ballot cards out of the gray secrecy envelope. Choose only ONE of the cards for voting. Votes cast for more than one political party will cause all your political party votes to be rejected.

Ballot cards:

- **No color (completely white)** with “Nonpartisan Ballot” is for voters who don’t want to vote in any of the three political party prim-

aries but do want to vote in the nonpartisan races, judicial races, and any local measures.

- **Red stripe** with “Democratic Party Ballot” is for voters who want to vote in the Democratic Party primary. This ballot card should also be used for voting in the nonpartisan races, judicial races, and any local measures.

- **Green stripe** with “Republican Party Ballot” is for voters who

want to vote in the Republican Party primary. This ballot card should also be used for voting in the nonpartisan races, judicial races, and any local measures.

- **Blue stripe** with “Libertarian Party Ballot” is for voters who want to vote in the Libertarian Party primary. This ballot card should also be used for voting in the nonpartisan races, judicial races, and any local measures.

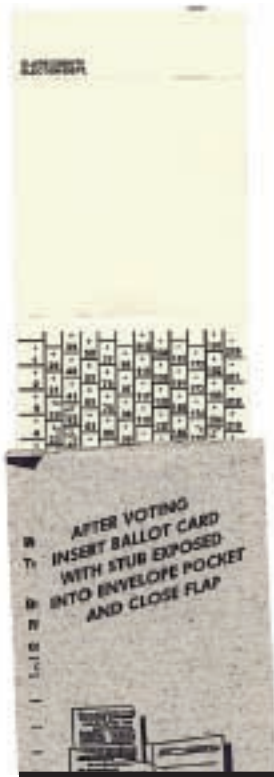


At the polling place, you will be handed this voting packet. (See step 1.)

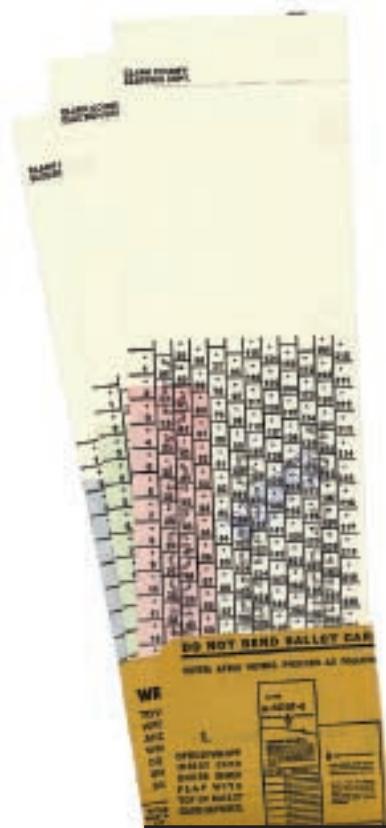
In the voting booth, take out the four ballot cards and choose ONE. Use it for ALL your voting. (See steps 2 to 4.)

Choose ONE of these ballot cards and use it for ALL your voting.

ing place voting instructions Polling



When you have finished voting, place the ballot card you voted on into the gray secrecy envelope. (See steps 5 and 7.)



Place the three unused ballot cards into the gold secrecy envelope. (See steps 5 and 6.)

3 **A.** If you have chosen to vote only the nonpartisan races, judicial races, and local measures, follow the instructions in the last section of the *Voting Guide* and punch out your choices using the punch tool.

B. If you chose one of the party ballot cards:
■ Follow the instructions in the *Voting Guide* for your particular party ballot card and punch out

your choices using the punch tool. **Remember, don't vote for any other party.**

■ Go to the last section of the *Voting Guide* and follow instructions for voting in the nonpartisan races, judicial races, and any local measures.

4 Check your ballot card and the *Voting Guide*.

- Have you punched out all the races or measures that you wanted to vote?
- Make sure you vote for only one candidate in a race. **If you vote for more than one candidate, your votes in that race will be rejected.** However, the remaining correct votes will be counted.

5 When you are satisfied that your ballot card is correct, place it into the gray secrecy envelope. Put the three remaining, unused ballot cards into the gold secrecy envelope.

6 Give the gold envelope (with the three unused ballot cards) back to the election workers.

They will remove the ballot card stubs and place them in a secure tub.

7 Take your gray envelope that contains your chosen, voted ballot card to the clerk by the ballot box.

The clerk will remove the stub and place the ballot into the ballot box.

Absentee ballot voting instructions

Voting in a partisan primary election has changed. The actual process is the same, but there are more choices to make.

To make sure that your vote is counted you need to follow the steps below when you receive your ballot package.

Your ballot packet will be mailed to you about 18 days before the September 14 primary. It will contain:

- The main envelope printed in red ink that contains all the voting materials,
 - An instruction sheet that explains the voting process,
 - The *Absentee Ballot Guide*,
 - A yellow secrecy envelope containing four different ballot cards,
 - A goldenrod-colored write-in ballot form, and
 - A return affidavit envelope with green stripes and addressed to the county Auditor.
- The packet may also contain a yellow voter identification form. (See step 7.)

1 Read the instruction sheet included in your packet that explains how to vote in this election, or use this pamphlet.

2 Read the *Absentee Ballot Guide* next.

It includes a section on how to punch out the ballot card correctly. The *Absentee Ballot Guide* has four sections. The first three show information about the political parties and the last section has the information about the nonpartisan offices, judicial offices, and local measures.



When you receive your voting ballot packet read the instruction sheet – or this pamphlet – and the Absentee Ballot Guide. (See steps 1 to 2.)

3 Take the four ballot cards out of the yellow envelope. Choose only ONE of the cards for voting. **Votes cast for more than one political party will cause all your political party votes to be rejected.**

Your choices are:

- **Buff ballot card** with “Nonpartisan Ballot” is for voters who don’t want to vote in any of the three partisan primaries but do want to vote in the nonpartisan



Take the four ballot cards out of the yellow secrecy envelope and choose ONE. Use it for ALL your voting. (See steps 3 to 5.)

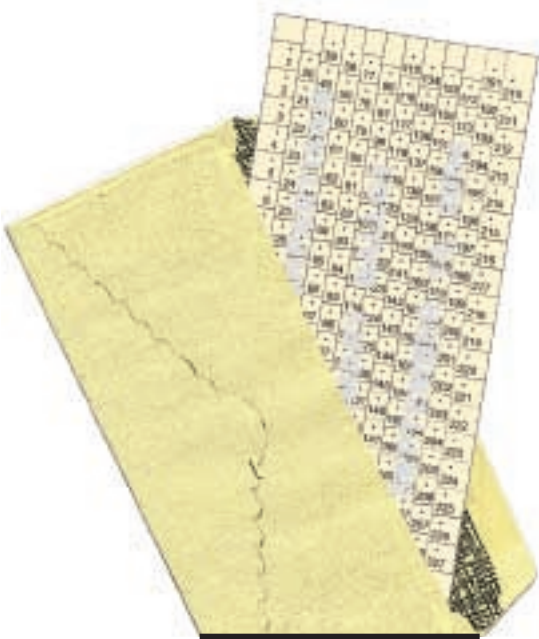
racers, judicial races, and any local measures.

- **Red ballot card** with “Democratic Party Ballot” is for voters who want to vote in the Democratic Party primary. This ballot card should also be used for voting in the nonpartisan races, judicial races, and any local measures.

- **Green ballot card** with “Republican Party Ballot” is for voters who want to vote in the

Choose ONE of these ballot cards and use it for ALL your voting.

Absentee ballot voting instructions



When you have finished voting, place the ballot card you voted on into the yellow secrecy envelope and seal it.
(See step 6.)



Place the yellow envelope into the affidavit envelope with the green stripes and seal it.
(See step 8.)



Read the oath, sign it, add the date, and then mail or return the envelope.
(See step 9.)

Republican Party primary. This ballot card should also be used for voting in the nonpartisan races, judicial races, and any local measures.

■ **Blue ballot card** with “Libertarian Party Ballot” is for voters who want to vote in the Libertarian Party primary. This ballot card should also be used for voting in the nonpartisan races, judicial races, and any local measures.

4 A. If you have chosen to vote only the nonpartisan races, judicial races, and local measures, follow the instructions in the last section of the *Absentee Ballot Guide* and punch out your choices.

B. If you chose one of the party ballot cards:

■ Follow the instructions in the *Absentee Ballot Guide* for your particular party ballot card

and punch out your choices. **Remember, don't vote for any other party.**

■ Go to the last section of the *Absentee Ballot Guide* and follow instructions for voting in the nonpartisan races, judicial races, and any local measures.

Absentee ballot voting instructions

5 Check your ballot card and the *Absentee Ballot Guide*.

- Have you punched out all the races or measures that you wanted to vote?
- Make sure you vote for only one candidate in a race. **If you vote for more than one candidate, your votes in that race will be rejected.** However, the remaining correct votes will be counted.

[*Optional* - If you want to vote for a candidate not in the *Absentee Ballot Guide*, use the goldenrod-colored write-in ballot. Remember, a write-in vote is counted only when the selected candidate has filed an Official Precinct Officer Declaration of Candidacy or a Write-in Declaration of Candidacy.]

6 Almost finished! When you are satisfied that your ballot card (and goldenrod write-in ballot, if you used it) is correct, place it inside the yellow secrecy envelope and seal it.

Don't write on this envelope.

7 If you registered by mail after January 1, 2003, you will need to include some type of personal identification information, such as a state drivers license, if you haven't already provided it to the Elections Department. This is a new requirement of the 2002 federal Help America Vote Act. You should already have received a request for this information or it may be in your ballot package from the Elections Department. It includes a list of the types of identification information that is acceptable. You will need to make a copy of the identification and include it in the affidavit envelope, not in the yellow secrecy envelope.

8 Place the yellow secrecy envelope into the affidavit envelope with green stripes. Then seal it.

9 Read the oath, then sign and date it. Put a first-class stamp on and mail it. **Make sure it is postmarked election day or earlier.**

Alternatively, you can drop the completed affidavit envelope on or before election day at:

- Your polling place on election day between 7 a.m. and 8 p.m.
- The Clark County Elections Department at 1408 Franklin Street, Vancouver, Monday to Friday, 8 a.m. to 5 p.m.
- The ballot drop-box on the east side of the Elections Department building, at any time.

List of polling places

For a complete list of all voting precincts and polling places, please see our Notice of Election, which will be published in the September 10 edition of the Columbian newspaper. You can also visit our Web site at www.clark.wa.gov/elections or you can call the County Elections Department at 397-2345 to find out which precinct you are in and where that precinct votes. Your precinct number and polling place are also printed on the voter registration identification card which was sent to you after you registered to vote.

Be an informed voter. Here's how.

There are many sources of information for citizens wishing to know more about candidates, issues and coverage of the upcoming September 14 primary



NEWSPAPERS

■ The Columbian

Web site: www.columbian.com

The 2004 Judicial Voter Pamphlet will be included as a supplement to The Columbian on or about August 30.

■ The Oregonian

Web site: www.oregonlive.com/elections/oregonian/clarkcounty

■ The Camas/Washougal Post Record

Web site: www.camaspstrecord.com

■ The Reflector

Web site: www.thereflector.com

LEAGUE OF WOMEN VOTERS

For a schedule of candidate forums and other events, see their Web site, www.lwvwa.org/clark/ or call 693-9966.

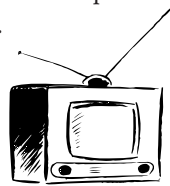
On October 13, 6:30 to 10 p.m., the League of Women Voters and Forum at the Library will hold a General Election Candidates' Night forum in a moderated format in Gaiser Hall at Clark College. This will include candidates who were nominated in Primary to appear on the General Election ballots.



FORT VANCOUVER REGIONAL LIBRARY

Look for candidates' brochures and flyers at any of the community library branches in Clark County.

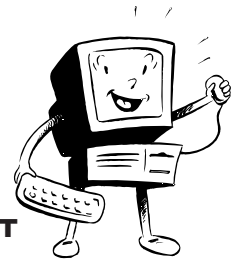
The library has computers with internet access.



CABLE TV

CVTV Clark – Vancouver Television on Comcast cable channels 23 and 21. Election coverage will include interviews, candidate forums, video voters guide and debates of candidates in selected local races. See TV listings in The Columbian and the CVTV Web site, www.cvtv.org, or call 696-8233. If you do not have cable TV you can obtain video tapes of any program at any Fort Vancouver Regional Library branch or from CVTV.

TVW on cable channel 22 will air video voters guides for state-wide races. For program schedule see the TVW Web site, www.tvw.org or call the Programming Hotline at (360) 664-4TVW.



THE INTERNET

■ Clark County Elections Department

Web site: <http://elections.clark.wa.gov>.

Links to the State On-Line Voter Pamphlet and the Judicial Voter Pamphlet will be included.

■ State Voter Pamphlet

Web site: <http://vote.wa.gov>

■ Judicial Voter Pamphlet

Web site: <http://www.courts.wa.gov>

The Fort Vancouver Regional Library has computers with internet access.

JOIN CLARK COUNTY RESIDENTS ON ELECTION NIGHT

On election night at approximately 8 p.m. gather in the hearing room on the 6th floor of the Clark County Public Service Center to hear and see election results. The public Service Center is located at 1300 Franklin Street.

How partisan candidates appear on the election ballot

How partisan candidates' names get printed on the Election Ballot

During the last week in July each year, citizens of Washington have the opportunity to file a *Declaration of Candidacy* to run for elective public office. For political party elective offices, any candidate filing a declaration may file as a candidate of a "major" political party or as a candidate of a "minor" political party or as an independent candidate. In Clark County, political party elective offices normally appear on the even year primary and general election ballot.

In order to qualify as a "major" party, a political party must have had a candidate running for a statewide office on the ballot during the last election where statewide offices were voted on in Washington. At least one statewide candidate for a political party must have received at least five percent of the total votes cast for that office. When these two events occur the political party of that candidate qualifies as a "major" political party. Currently, there are three "major" political parties in the state of Washington, the Democratic Party, the Republican Party and the Libertarian Party.

If a citizen decides to file as a candidate for political party elective office

but they are not a member of a major political party, they will have to declare themselves a candidate of a minor political party or declare themselves to be an independent candidate. Candidates for political office who file consider themselves independents or members of a minor political party must provide a petition signed by registered voters from the district in which they are seeking elective office. Depending on the office sought, the petition must contain the valid signatures of at least one thousand registered voters for a statewide office or a petition containing the signatures of at least one hundred registered voters of other districts. These signatures must be collected at an advertised convention held in late June or early July. This petition must be submitted to election officials in order for the candidate to file a *Declaration of Candidacy*.

During the political party primary, held in mid September of even numbered years, only the names of candidates of "major" political parties will be printed on the ballot. There will be separate ballots for each of the three major political parties and voters will have to decide which of the three ballots they wish to vote. An additional ballot containing only nonpartisan candidates and local measures will be provided to each

voter in case they choose to not participate in a political party primary.

Each major political party candidate must demonstrate voter support in two ways to appear on the November general election ballot. A candidate must receive the most votes in his or her party's primary and also must receive one percent of the total votes cast. A candidate running unopposed for the nomination of a political party for a particular office but who does not receive one percent of the total vote cast for that office will *not* proceed to the general election. Similarly, a political party must have at least one percent of the total number of voters select that party's ballot before any of its nominees may proceed to the general election.

Candidates who file as minor political party or as independent candidates will go directly to the general election ballot in November. They will *not* appear on the September primary ballot.

Nonpartisan candidates are those who are not required to provide a party label when they file for office. They include Superintendent of Public Instruction as well as all judicial offices and local measures.

U.S. REPRESENTATIVE 3rd Congressional District

Brian Baird
Democrat



As your representative I will always work hard, listen and use common sense. I've worked to strengthen our economy, make health care and prescription drugs affordable, protect our environment and improve our education system. I fought to keep our communities safe from crime and drugs, and I've voted to support our soldiers and veterans. I led the effort to let Washington residents deduct sales taxes, voted to eliminate the marriage penalty and worked to end wasteful spending. We have accomplished a lot together, but there is much more to be done and I would be honored to have your vote.

Address: Brian Baird for Congress, PO Box 5016, Vancouver 98668; Telephone: (360) 696-1993; E-mail: brian@brianbaird.com; Web site: www.brianbaird.com

Cheryl A. Crist
Democrat



I call myself a peace candidate. I favor making nonviolence the organizing principle of US foreign policy, and ending the occupation of Iraq immediately. I support the 2004 Washington State Democratic Platform. My other positions on issues will be available at www.vote-smart.us

I hold a masters degree in guidance and counseling. I have had careers in public school teaching, the financial services industry, social services and radio broadcasting. At age 60, I am semi-retired and teaching yoga.

Please vote for me, your peace candidate. For more information see www.cristforcongress.us

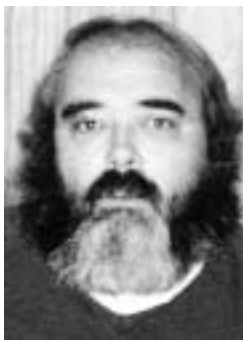
Address: Crist for Congress Campaign, 3029 Southall Court NW, Olympia 98502; Telephone: (360) 866-3911

15th LEGISLATIVE DISTRICT STATE REPRESENTATIVE Position No. 1

(No Democratic Party candidate filed)

15th LEGISLATIVE DISTRICT STATE REPRESENTATIVE Position No. 2

Michael H. Kepcha
Democrat



My name is Michael Kepcha. I am 58 years old, single with no significant other ever. Not religious, raised Mormon. Attended PCC 3 yrs, PSU 2 yrs full time. USNR 1963-1969, Active USN 1965-1967. I've filed twice just so there's a Democrat on the ballot for the 15th district; did not plan on it. Told the local papers it was a one time deal in 2002; *meant it!* Things happen. I wanted to work the 15th pos. 2 after 2002; couldn't. I lost 3 to 1 in the 15th vote. Five times the people voted in Sunnyside area as all the other 15th.

Address: 39215 NE 28th Street, Washougal 98671; Telephone: (360) 837-3922

17th LEGISLATIVE DISTRICT STATE SENATOR

Paul Waadevig
Democrat



Paul Waadevig: Positive, Proactive Leadership: As one of the nation’s leading government spending analysts, Paul knows how to make government efficient. “Our government must be held to the same standards as any responsible business.”

Paul Waadevig is Committed to Stronger Public Schools: Paul received the endorsement of the Washington Education Association because he knows good teachers and good schools prepare our children for a lifetime of service and knowledge.

Paul Waadevig is Committed to Real Jobs: “I’ll push for ways to attract good jobs, and develop innovative job creation strategies.”

Voice. Vision. Action. Paul means business.

Address: Waadevig for Senate, 14300 NE 20th Avenue #D102-278, Vancouver 98686; Telephone: (360) 693-6584; Web site: www.paul2004.org

John T. Davis
Democrat



You learn some thing when you’ve run a local school district.

You learn about values, community and the importance of bringing people together. You learn about fiscal responsibility and the prudent use of tax dollars.

Most of all you learn to appreciate the value of listening to the people.

Teamwork. That’s how things get done. And that’s exactly how John Davis has remained so productive throughout his career.

Now, this father of four, distinguished educator and retired Superintendent of the Hockinson School District has set his sights on a new goal – the State Senate.

John Davis is ready to lead.

Address: John Davis for State Senate, PMB 232, 13023 NE Highway 99 #7, Vancouver 98686; Telephone: (360) 921-7555; E-mail: Davis.senate@people4davis.com; Web site: www.people4davis.com

17th LEGISLATIVE DISTRICT STATE REPRESENTATIVE Position No. 1

Ilene Ferrell
Democrat



A journeyman electrician and small business owner, Ilene is dedicated to community service. An InterACT Board member, she listens to concerned citizens. A Women in Action volunteer, she mentors 5th grade girls. An electrician, she volunteers with Habitat for Humanity. A respected citizen, she served on Clark College’s Presidential Search Advisory Committee. A Leadership Clark County graduate, Ilene has a bachelor’s degree and is completing her master’s degree in public administration.

“My parents taught me the importance of family, friends, and community. I ask for your vote to become State Representative and promise to respect my commitment to public service.”

Address: Working Families for Ilene Ferrell, 2019 NE 179th Street #G-32, Ridgefield 98642; Telephone: (360)693-8367; E-mail: ilene@ilene17.com; Web site: www.ilene17.com

(Second candidate in this race on next page)

These statements are submitted by the candidates and are not checked for accuracy by any government agency.

17th LEGISLATIVE DISTRICT STATE REPRESENTATIVE Position No. 1 (continued)

Pat Campbell
Democrat



After graduating from Pacific Lutheran University, Pat Campbell and his wife Dorothy, a pediatric nurse, moved here in 1976. Their two sons attended Camas and Evergreen public schools and are now starting families of their own in Clark County.

A Vietnam veteran, Pat has been in public service for over 35 years, primarily in corrections. He works extensively with local families, pastors, courts, and employers.

Pat has not made rash promises to obtain campaign contributions or endorsements. He is running a fiscally responsible campaign, personally doorbelling district residents.

“You are the special interest I’ll serve in Olympia.” – Pat Campbell

Address: Elect Pat Campbell, P.O. Box 873206, Vancouver 98687; Telephone: (360) 904-0815; E-mail: pat777campbell@msn.com

17th LEGISLATIVE DISTRICT STATE REPRESENTATIVE Position No. 2

Deb Wallace
Democrat



State Representative *Deb Wallace gets results*, bringing jobs and transportation improvements to Clark County.

Challenging the state to do better, *Deb Wallace has taken action*. Her first bill requiring performance measures for transportation is making Washington more accountable. Now she will work to make all state agencies accountable.

With two children, Deb understands kids need a quality education. She worked to increase enrollment in higher education, and fund K-12.

Wife of an Air Force officer, a mom, economic development specialist, transportation professional and community activist, *Deb Wallace has the background* to build bi-partisan coalitions to solve our community’s challenges.

Address: Re-elect Deb Wallace, PO Box 872015, Vancouver 98687; Telephone: (360) 256-9011; E-mail: votedebwallace@comcast.net ; Web site: www.votedebwallace.org

18th LEGISLATIVE DISTRICT STATE SENATOR

Dave Seabrook
Democrat



Dave Seabrook believes we must rebuild trust in our elected leaders. He will hold government accountable to remember who it works for and to live within its budget.

As your State Senator Dave Seabrook will focus on creating quality jobs, assisting small businesses loyal to our community, and preserving the quality of our children’s education.

As a Fire Captain and paramedic Dave Seabrook, studied health policy and knows we must control the skyrocketing cost of health care while improving overall quality.

Let’s send Firefighter Dave Seabrook to Olympia to rebuild trust and refocus our priorities to better serve Southwest Washington.

Address: Dave Seabrook for 18th District State Senate, PO Box 2873, Battle Ground 98604; Telephone: (360) 772-3185; E-mail: dave@daveseabrook.org

These statements are submitted by the candidates and are not checked for accuracy by any government agency.

18th LEGISLATIVE DISTRICT STATE REPRESENTATIVE Position No. 1

Pam Brokaw
Democrat



We need positive leadership we can count on in the 18th District. It's time for economic strategies that create sustainable family-wage jobs, a transportation plan that looks to the future, good schools and essential government services at a cost we can afford.

As a reporter, I learned the issues. Fourteen years of public service taught me that solutions require leadership and teamwork linking citizens, businesses and government.

As your State Representative, I'll build partnerships that get the results Washington families expect and deserve.

Pam Brokaw for State Representative.

Telephone: (360) 546-0070; *E-mail:* votebrokaw@comcast.net

18th LEGISLATIVE DISTRICT STATE REPRESENTATIVE Position No. 2

Brian D. Beecher
Democrat



Brian Beecher: Putting People First

On the Washougal City Council, Brian keeps a budget balanced without sacrificing basic services. He will demand higher standards of accountability on state spending. He will stop taxpayer support of companies outsourcing our jobs.

Brian Beecher: Commitment and Integrity

"It's time to get back to basics. Government needs to focus on people not parties. We need to lower the health care costs and taxes on small businesses to create new jobs. Better roads will attract new investment. We need to preserve our high quality of life and focus on SW Washington priorities."

Address: PO Box 561, Camas 98607; *Telephone:* (360) 513-1814; *E-mail:* brianbeecher2004@yahoo.com; *Web site:* www.brianbeecher.com

49th LEGISLATIVE DISTRICT STATE SENATOR

Craig Pridemore
Democrat



Craig Pridemore is a different kind of leader. He takes a stand on tough issues.

A trusted County Commissioner, Craig doesn't just talk about problems, he gets to work fixing them. He's the only candidate with a *proven track record of real accomplishments* for Clark County – keeping police on the street, fixing roads, and improving traffic.

As State Senator, he'll reward businesses for *creating local jobs*, not outsourcing them, fight for *quality healthcare* for every child and seniors, and continue to *protect rural areas* from development.

Craig Pridemore won't give in to political bosses in Olympia – he'll fight for us.

Address: Craig Pridemore for State Senate, 502 NE 78th Street, Vancouver 98665; *Telephone:* (360)573-4802; *E-mail:* info@craigpridemore.com; *Web site:* www.craigpridemore.com

49th LEGISLATIVE DISTRICT STATE REPRESENTATIVE Position No. 1

Bill Fromhold
Democrat



Bill Fromhold has actively and effectively represented the 49th District in Olympia. Due to his experience, leadership, and ability to solve problems, Bill has risen to vice chairmanship of the Appropriations and the Higher Education Committees.

He has demonstrated that he can bring all citizens – labor, business, and government – together to answer our urgent challenges in education, healthcare, long term care, transportation, workforce development, and childcare.

As an experienced community leader and legislator, Bill’s record shows his strong advocacy for southwest Washington. His character, courage, and compassion are exactly what the 49th District needs today and tomorrow.

Address: 11406 SE 19th Street, Vancouver 98664; Telephone: (360)907-3200;
Web site: www.fromhold.org

49th LEGISLATIVE DISTRICT STATE REPRESENTATIVE Position No. 2

Jim Moeller
Democrat



Jim Moeller, health care professional, lifelong Vancouver resident, votes our district’s values!

“As your legislator I am focused on jobs, health care, education, and our quality of life. I voted against corporate welfare measures and spending taxpayer money on companies outsourcing jobs overseas. My legislative votes for strong schools and a clean environment work to make our state competitive by attracting good jobs today without sacrificing our future. My top priorities are affordable health care coverage, family wage jobs, education, and veterans’ services. I am asking for your vote to continue to have the honor of representing you in Olympia.”

Address: The Committee to Elect Jim Moeller, 1701 Broadway, Suite 328, Vancouver 98663; Telephone: (360) 904-3377; E-mail: jim@jimmoeller.org;
Web site: www.jimmoeller.org

COMMISSIONER DISTRICT No.1 COUNTY COMMISSIONER

Betty Sue Morris
Democrat



A former Washington State Legislator, incumbent Betty Sue Morris is respected for thoroughness, intelligence, leadership and achievement. During her tenure, the county built more parks and roads than under any other board. A fiscal conservative she’s held the county financially stable despite revenue cutbacks. She’s a recognized statewide leader in salmon recovery.

In her next term Morris will champion jobs, parks, ball fields, law enforcement and affordable housing. She holds a Master’s degree and is a former teacher, newspaper reporter and hospital communications director. A wife and mother of two grown children, Betty Sue is a 32 year Felida resident.

Telephone: (360) 576-9119; E-mail: Morriscampaign@aol.com;
Web site: www.BettySueMorris.com

COMMISSIONER DISTRICT No.2 COUNTY COMMISSIONER

Jeanne Harris
Democrat



For eight years I have served you in local government, while running my own business, to improve our community through collaboration and partnerships to provide services while holding the line on budgets and taxes. I'm fiscally conservative, socially responsible and offer pro-active, common sense leadership. I will work to protect our families and our quality of life with managed growth, respecting rural as well as urban, assuring we have jobs, affordable housing, parks, ball fields, a healthy environment, public transit and a criminal justice system that puts offenders in jail and offers alternative programs that save lives, families and money.

Address: People for Jeanne Harris, 14511 NE 49th Circle, Vancouver 98682; Telephone: (360) 896-0422; E-mail: jeanne@jeanneharris.com; Campaign Coordinator: barb.sheldon@comcast.net; Web site: www.jeanneharris.com

John Hagensen
Democrat



John Hagensen brings to the commissioner position the common sense values he learned growing up in Clark County. As a current port commissioner, school board member, and attorney, John is a proven leader.

Dedicated to protecting our natural resources while carefully planning for growth, John also believes we need to work hard to develop efficient transportation, attract family wage jobs, stimulate our economy, minimize taxes and maximize services.

A leader with experience and vision, he asks for your vote to give our community values a voice in the future of Clark County. John is the clear choice for county commissioner.

Address: Committee to Elect John Hagensen, 335 NE Fifth Avenue, Camas 98607; Web site: www.johnhagensencountycommissioner.com

U.S. REPRESENTATIVE 3rd Congressional District

Thomas A. Crowson
Republican



I am a homebuilder, small businessman and retired firefighter. My wife, Tootie, is a schoolteacher. We have two children, Alicia and Will.

The most important issue is the war on terrorism. I strongly support the President's actions to engage terrorists domestically and overseas.

I will make President Bush's tax cuts permanent and support more tax cuts to promote economic growth, create new job opportunities and increase tax revenues.

I support the Defense of Marriage Act and a constitutional amendment reinforcing that fact.

I am a member of the NRA and endorsed by Human Life PAC.

For information go to: **Web site:** www.crowsonforcongress.com

Dawn Courtney
Republican



Dawn's loyalties are in the right place!

National Security: Dawn's committed to defeating the terrorists and to solving our chaotic border situations. Dawn will not support those who want to give control of our national security to the United Nations.

Family Values: Dawn rejects the "victim mentality". Dawn rejects the government's quest for more control over your life.

Private Businesses: Dawn's a marketing professional. Dawn helps private businesses grow with dedication, communication and commonsense. Dawn will use her skills in Congress so your child will have economic opportunities.

Dawn will represent you well; so vote *Dawn Courtney for Congress!*

Address: PO Box 382, Castle Rock 98611; **Telephone:** (360) 751-1726;

E-mail: dawn@CourtneyforCongress.net; **Web site:** www.CourtneyforCongress.net

15th LEGISLATIVE DISTRICT STATE REPRESENTATIVE Position No. 1

Bruce Chandler
Republican

(No statement or photograph was submitted)

15th LEGISLATIVE DISTRICT STATE REPRESENTATIVE Position No. 2

Dan Newhouse
Republican



Dan Newhouse was born in the Yakima Valley, graduated from WSU, is past president of Yakima County Farm Bureau and Hop Growers of America. He and his family live on their farm near Sunnyside. His agriculture and business knowledge, his ability to work with people, and his integrity have served our entire district well.

Dan believes government must be more efficient with your tax dollars. He supports issues that will provide safe neighborhoods, good schools and protect property rights. With your vote, Dan will continue to promote education, business, agriculture, timber, and an adequate water supply.

Thank you.

*Address: Dan Newhouse, PO Box 1214, Sunnyside 98944; Telephone: (509) 837-3807
E-mail: dnewhous@bentonrea.com*

17th LEGISLATIVE DISTRICT STATE SENATOR

Don Benton
Republican



Overall quality of life begins with a solid economy, which provides good paying jobs and prosperity for all our families. It's from prosperity that we can then afford the government services we desire.

Our economy is improving. I hope you agree that I've been a part of making that happen. I certainly will continue to protect it. Whether it's roads, health care, education, or environmental issues, I've worked hard to bring reasonable, common-sense solutions to the table.

I hope you will offer me the honor of your vote in this fall's election. It has been a pleasure to serve you!

*Address: Friends For Don Benton, PO Box 5076, Vancouver 98668;
Telephone: (360) 574-7369; Web site: www.DonBenton.com*

17th LEGISLATIVE DISTRICT STATE REPRESENTATIVE Position No. 1

Paul Harris
Republican



Paul Harris is a small business owner and former Evergreen School-board Member, serving for eleven years. Paul pledges to focus on creating jobs and improving the quality of education for our children. As a small business owner, he knows first hand the struggles that businesses face each day. Paul believes that in order to create more jobs, we must reduce the amount of taxes and regulations on our families and small businesses. Paul is married to his wife Lori and they have five children.

*Address: 1916 SE 130th Avenue, Vancouver 98683; Telephone: (360) 256-4057;
E-mail: plharris@comcast.net*

(Second candidate in this race on next page)

17th LEGISLATIVE DISTRICT STATE REPRESENTATIVE Position No. 1 (continued)

Jim Dunn
Republican



Jim Dunn has proven to be effective in the legislature for the residents of Vancouver and Clark County.

With consensus-building skills, Jim helped establish accountability in government, increased availability of affordable homes, expanded rights of residents, protected seniors, controlled spending, limited taxes and created family-wage jobs.

Jim and Joan, married 40 years, believe in giving back to the community. They have two children and five grandchildren. Jim, from a Washington Territory pioneer family, is a Vietnam-era veteran.

Jim is not beholden to anyone except the citizens of Clark County. Thank you for your support!

For further information: Address: 13215 C8 SE Mill Plain Boulevard #362, Vancouver 98684-6963; Telephone: (360) 896-5761; E-mail: StateRep@JimDunn.com; Web site: www.JimDunn.com

17th LEGISLATIVE DISTRICT STATE REPRESENTATIVE Position No. 2

Roy Rhine
Republican



Roy Rhine is dedicated to improving job creation, transportation and education. As a former private contractor, he knows the importance of a strong job market and benefits of lower taxes. He'll work to create livable wage jobs. As a State Patrolman, Roy has dedicated his life to serving and protecting our families. He knows our community's transportation needs and will work to improve our transportation system, making it accountable, vital to the future of Southwest Washington. As the father of two boys, Roy knows the importance of an education. As a Legislator, he will help secure and safeguard educational resources.

Address: 9517 NE 144th Court, Vancouver 98682; Telephone: (360) 892-6832; E-mail: rlrhine@comcast.net

18th LEGISLATIVE DISTRICT STATE SENATOR

Joseph Zarelli
Republican



Quality of life begins with a healthy economy that provides good paying jobs for our families. Only in prosperity are we able to afford needed government services, from education to roads, and healthcare to the environment. Raising taxes and imposing burdensome regulations only diminishes growth and hurts everyone.

As Chairman of the Ways & Means committee, I've worked hard to bring sound fiscal policy back to Olympia. And I've kept my commitments I made to you when I first ran for office. It has been an honor representing the 18th District. I humbly ask for your vote again this fall.

Address: PO Box 65087, Vancouver 98665; Web site: www.gojoez.com

18th LEGISLATIVE DISTRICT STATE REPRESENTATIVE Position No. 1

Richard Curtis
Republican



I'm Richard Curtis – father, husband, Vancouver Fire Captain-Paramedic, veteran, small business-owner and a city councilman for LaCenter.

Making the tough decision is what I do everyday. We have tough choices coming up in the House, and I have the experience and the training to get the job done.

People must get back to work and improving this state's business climate is the way to do it. I will fight to stop any income or payroll tax while working to end the business-strangling B&O tax.

Together, we can make a difference. This election, I'm asking for your vote. Thank you.

*Address: P.O. Box 1805, LaCenter 98629; Telephone: (360) 263-6952;
E-mail: Richard@electcurtis.com; Web site: www.electcurtis.com*

18th LEGISLATIVE DISTRICT STATE REPRESENTATIVE Position No. 2

Ed Orcutt
Republican



State Representative Ed Orcutt has earned a reputation in Olympia as an effective, independent leader who works hard to make things happen for the families in his district.

After earning his B.S. degree in forestry management, Ed Orcutt has worked as a forestry consultant for over 14 years. Ed is a leader in protecting our area's natural resources and the quality of life we all enjoy.

Ed Orcutt's priorities include working to create more family-wage jobs, to make government live within its means, and to fund basic education needs.

Keep Ed Orcutt working for us as our state representative.

Address: PO Box 1280, Kalama 98625; Telephone: (360) 751-2317

49th LEGISLATIVE DISTRICT STATE SENATOR

Don Carlson
Republican



Senator Don Carlson is a hard working legislator representing the citizens of Southwest Washington as a problem-solver and proven leader. He served as chair of the Higher Education Committee in the House, and continues as the current Chair in the Senate. He also serves on the Education, Children, Family Services and Corrections, and Ways and Means Committees. Don taught social studies for over 30 years in the Vancouver public schools before being elected to the Legislature. He continues to promote a quality education for the children of our State. He is working to improve our environmental quality.

*Address: Don Carlson, 507 NE 99th Street #71, Vancouver 98665;
E-mail: sendcarl@pacifier.com; Web site: www.carlsonforsenate.com*

49th LEGISLATIVE DISTRICT STATE REPRESENTATIVE Position No. 1

Justin Riley
Republican



A lifelong resident of Vancouver, Justin understands the issues that are important to the people here. A hard worker and quick study, he can provide new perspectives on the issues important to the people in the 49th District.

From making sure that employers aren't driven out of Washington by an over-regulating government, to making sure our police have the resources they need, to ensuring the best possible education for our children – no matter the source of that education – Justin offers new leadership with a new voice.

Address: The Committee to Elect Justin Riley, 1003 NE 91st Avenue, Vancouver 98664; E-Mail: Justin@rileyforrep.com; Web site: www.rileyforrep.com

49th LEGISLATIVE DISTRICT STATE REPRESENTATIVE Position No. 2

Mike W. Smith
Republican



As a proud citizen of beautiful Vancouver, Mike W. Smith truly cares about the issues that face our wonderful community. Mike pulled jobs to the front of the table two years ago by actually working as a broker to get good companies here to Vancouver, and Mike believes this to be the most important issue again. When people are working with good paying jobs everything else falls into place. The money needed for health care, education, transportation and fighting crime is there when people are working. Your vote for Mike W. Smith is a vote for action, not just talk.

Address: Committee to Elect Mike W. Smith; PO Box 5665, Vancouver 98668; Telephone: (360) 695-7069; E-mail: friends@mikewsmith.com; Web site: mikewsmith.com

COMMISSIONER DISTRICT No. I COUNTY COMMISSIONER

Tom Mielke
Republican



Tom Mielke, a father and grandfather, former small businessman and four-term state representative, is running for county commissioner. A decorated Vietnam veteran, Tom resides in Battle Ground.

He's owned a business and met a payroll. Tom is dismayed by the over-regulation and business-strangling county fee structure. Tom knows we need jobs here in Clark County now. Tom will focus on economic development every day he's in office without waiting 8 years first.

He will protect your private property rights. Tom will pledge to end intrusive county government practices.

He has a proven record of service. He's asking for your vote.

Address: PO Box 2503, Battle Ground 98604; Telephone: (360) 687-1106; E-mail: tomforcom@cs.com

COMMISSIONER DISTRICT No. 2 COUNTY COMMISSIONER

Marc Boldt
Republican



Common sense and credible leadership through sincere service has been my driving force for the past ten years as your State Representative. As a lifelong county resident, I want my children to enjoy the benefits of our wonderful community.

My top priorities include keeping our community safe, creating a balanced budget and addressing the county's transportation and infrastructure needs.

Taxpayers will know I am their advocate in county government by my commitment to providing the most effective and efficient services possible. This starts with a strong, top down leadership philosophy that your government works for you. Please vote for me.

Address: 19405 NE 112th Street, Brush Prairie 98606; Telephone: (360) 256-9025; E-mail: Marc@ElectMarcBoldt.com; Web site: www.ElectMarcBoldt.com

U.S. REPRESENTATIVE 3rd Congressional District

(No Libertarian Party candidate filed)

15th LEGISLATIVE DISTRICT STATE REPRESENTATIVE Position No. 1

(No Libertarian Party candidate filed)

15th LEGISLATIVE DISTRICT STATE REPRESENTATIVE Position No. 2

(No Libertarian Party candidate filed)

17th LEGISLATIVE DISTRICT STATE SENATOR

(No Libertarian Party candidate filed)

17th LEGISLATIVE DISTRICT STATE REPRESENTATIVE Position No. 1

(No Libertarian Party candidate filed)

17th LEGISLATIVE DISTRICT STATE REPRESENTATIVE Position No. 2

(No Libertarian Party candidate filed)

18th LEGISLATIVE DISTRICT STATE SENATOR

(No Libertarian Party candidate filed)

18th LEGISLATIVE DISTRICT STATE REPRESENTATIVE Position No. 1

(No Libertarian Party candidate filed)

18th LEGISLATIVE DISTRICT STATE REPRESENTATIVE Position No. 2

(No Libertarian Party candidate filed)

49th LEGISLATIVE DISTRICT STATE SENATOR

(No Libertarian Party candidate filed)

49th LEGISLATIVE DISTRICT STATE REPRESENTATIVE Position No. 1

(No Libertarian Party candidate filed)

49th LEGISLATIVE DISTRICT STATE REPRESENTATIVE Position No. 2

(No Libertarian Party candidate filed)

COMMISSIONER DISTRICT No.1 COUNTY COMMISSIONER

(No Libertarian Party candidate filed)

COMMISSIONER DISTRICT No. 2 COUNTY COMMISSIONER

(No Libertarian Party candidate filed)

JUDGE OF THE DISTRICT COURT Position No. 5

Janna R. Lovejoy
Nonpartisan



If elected judge, I am committed to bringing to the court the qualities of knowledge, experience, integrity, and common sense.

I have dedicated 21 years to the legal profession. I am a graduate of the University of Wisconsin Law School. In full-time private practice since 1993, I have competently addressed thousands of civil and criminal legal issues.

Advocating effectively, both as a prosecutor and as a defense attorney for 14 years, I have developed a balanced perspective and a confident no-nonsense approach that has prepared me to deliver fair, equitable, and tough decisions from the bench.

*Address: PO Box 49, La Center 98629; Telephone: (360) 225-2281;
E-mail: jrlovejoy@earthlink.net*

Craig Edward Kennedy
Nonpartisan



As your District Court Judge, Craig Kennedy will ensure that those who come before the court will be treated fairly and that our community's safety will not be compromised. Craig is a decorated U.S. Air Force, Vietnam Era Veteran; former Deputy Prosecutor; Defense Attorney; Community Services Specialist for Washington state; Children's Advocate and Probation Officer. Craig and his family live in Vancouver. Craig is committed to an innovative, customer-friendly court. Currently, no elected incumbent holds this position. If you would like to see the District Court move beyond simply clearing the docket, please support Craig Kennedy with your vote.

*Address: 14300 NE 20th Avenue, Suite D201321, Vancouver 98686;
E-Mail: KennedyforJudge@Comcast.net*

Rich Melnick
Nonpartisan



Judge Rich Melnick is dedicated to serving the public. He is the best qualified and only experienced candidate. With over twenty-four years as a judge and prosecutor, Judge Melnick has demonstrated high integrity, strong work ethics, and organizational skills. He is fully knowledgeable about court operations. Judge Melnick is a recognized legal scholar.

Judge Melnick, his wife Lori and their children, Zack and Ben, are active community volunteers. He coaches and assists with youth and athletic programs.

"I promise to provide fair and equal justice to Clark County and to always remember my decisions have real impact on people's lives."

Address: Committee to Retain Rich Melnick, 712 W Evergreen Boulevard, Vancouver, 98660; E-Mail: rmelnick@isp LLC.net

The office of the **Precinct Committee Officer**

In addition to the various state and county offices which will appear on the primary election ballot, most voters will be able to vote for the office of Precinct Committee Officer.

Who is eligible?

Anyone who is a registered voter and a member of a major political party may become a candidate. A candidate must file a declaration of candidacy form and pay a \$1 filing fee to the county auditor. Since voters do not register by political party in Washington, a candidate declares himself/herself to be a member of a major political party at the time of filing.

Election of a Precinct Committee Officer

Candidates appear on the primary ballot only. The candidate receiving the most votes in the precinct for each political party is elected. However, to be declared elected, a candidate must receive at least 10 percent of the number of votes cast

for the candidate of his/her party receiving the greatest number of votes in that precinct.

Term of office and vacancies

The term of office is two years. The term begins upon the official certification of the election results by the county canvassing board. Should a vacancy occur in the office (caused by death, disqualification, resignation, or failure to elect), the chairperson of the County Central Committee fills the vacancy by appointment.

Duties of a Precinct Committee Officer

Each officer is a member of the County Central Committee. The committee has the authority to nominate persons or fill

vacancies on the party ticket for a state, legislative or county office that is entirely within the county. Also, they elect members to the State Central Committee. The following duties are commonly assigned by the party organization:

- Attend meetings of county committees
- Actively participate in fund-raising activities
- Distribute party election materials during election campaigns
- Recommend party members to work as election poll workers
- Hold precinct caucuses for the purpose of adopting resolutions and selecting delegates to the county conventions
- Establish a record of eligible voters and party members within the precinct.

Individuals who are interested in serving as a Precinct Committee Officer should contact the chairperson of the County Central Committee or the state party headquarters.

Absentee ballot application

I hereby declare that I am a registered voter

Print name: Last First Middle initial

Residence address as registered

City or town State Zip code

Birth date Phone number

This application is being made for an Absentee Ballot for the

2004 Primary 2004 General both Permanent absentee ballot

X

Signature

Street

City or town State Zip code

OFFICE USE ONLY

Reg# _____

Precinct _____

Code _____

Date issued _____

Date returned _____

Voted

or Taken by _____

Format _____

To be valid, your written signature must be included.

Fill in address where you wish absentee ballot to be sent.

Directions:

1. Fill out your name and address as you are registered.
2. Be sure to print your name on the appropriate line.
3. Sign your name at the 'X'.

4. If you wish to have your ballot sent to an address other than where you are registered, indicate that address below your signature.

5. Mail to: Greg Kimsey, Clark County Auditor, Elections Department, P.O. Box 8815, Vancouver WA 98666-8815.

Ballot measures

CITY OF WASHOUGAL

PROPOSITION NO. 1

Emergency Medical Program Excess Levy

Shall the City of Washougal replace an existing Emergency Medical Services property tax levy of \$0.25 per one thousand dollars of assessed valuation with a tax levy of \$0.50 per thousand of assessed valuation for six (6) consecutive years commencing on January 1, 2005 and expiring December 31, 2010?

The proceeds of the levy shall be used exclusively to continue to provide emergency medical services in the City of Washougal.

TAX LEVY INCREASE - YES ...

TAX LEVY INCREASE - NO ...

No statement for or against submitted

City of Washougal explanatory statement:

The city of Washougal seeks voter approval to replace an existing Emergency Medical Services property tax levy by increasing the Emergency Medical Services property tax levy to fifty cents (\$0.50) per thousand dollars of assessed value of property in the City in each year for six consecutive years, with collection beginning in 2005.

CAMAS SCHOOL DISTRICT NO. 117

PROPOSITION NO. 1

Replacement Capital Levy for Technology

The Board of Directors passed Resolution #03-10 concerning this proposition. This proposition authorizes the acquisition of educational technology and equipment, including classroom computers to support instruction; and authorizes the following excess levies, in place of an expiring levy, for such purposes on all taxable property within the District:

| <u>Collection years</u> | <u>Approximate Levy</u> | |
|-------------------------|-------------------------|---------------|
| | <u>Rate/\$1,000</u> | <u>Levy</u> |
| | <u>Assessed Value</u> | <u>Amount</u> |
| 2005 | \$ 0.24 | \$ 706,014 |
| 2006 | \$ 0.24 | \$ 741,434 |
| 2007 | \$ 0.24 | \$ 778,625 |

all as provided in District Resolution No. 03-10. Should this proposition be approved?

YES ...

NO ...

No statement for or against submitted

Camas School District No. 117 explanatory statement:

The Camas School District No. 117 seeks voter approval to impose an excess property tax levy in the amount of twenty-four cents (\$0.24) per thousand dollars of assessed value of property in the District to be collected in each of the years 2005, 2006 and 2007. The tax revenue would be used for the acquisition of educational technology and equipment.

RIDGEFIELD SCHOOL DISTRICT NO. 122

PROPOSITION NO. 1

General Obligation Bonds – \$1,000,000

The Board of the Ridgefield School District No. 122 passed Resolution #2003-07 concerning this proposition. This proposition authorizes the District to acquire a site and commence preparatory work for the construction of a new school and upgrade and modernize systems at the four district schools, issue \$1,000,000 of general obligation bonds maturing within a maximum term of 10 years, and levy property taxes annually, in addition to regular tax levies, to repay such bonds, all as provided in Resolution #2003-07. Shall this proposition be:

APPROVED?.....

REJECTED?.....

Statement for:

Approval of this bond enables the Ridgefield School District to purchase 50 acres of property for construction of a new school. A yes vote is needed to continue Ridgefield’s commitment to quality education for every child.

It has been 32 years since Ridgefield has built a new school and the enrollment at each of our four schools is beyond capacity. Enrollment in the district is going to continue to dramatically increase. Construction of 1200 homes is already underway with more in approval process. This rapid residential growth requires us to take action now.

Approval of the bond will only cost property owners on average eleven (.11) cents per \$1,000 of assessed value over the next ten years. This is a small price to pay to maintain Ridgefield’s high standard of education.

The issue is real and the solution is before us. With land prices on the rise, delaying this purchase would ultimately cost taxpayers more money. Passing this bond is the first step to alleviate our overcrowded schools and continue to provide the quality of education that we as a community are proud of.

Please join us in approving this bond.

Prepared by:

Stephanie Thompson, Chair; Joseph Vance, Melanie Abrams

No statement against submitted

Ridgefield School District No. 122 explanatory statement:

Ridgefield School District No. 122 seeks voter approval to issue general obligation bonds. If the voters approve this ballot proposition the District will be able to issue \$1,000,000 of general obligation bonds maturing within ten (10) years, to fund the acquisition of a new school site and do preparatory work for construction of a new school and to upgrade and modernize systems at four existing schools. The general obligation bonds will be repaid through an additional annual property tax levy.

CLARK COUNTY FIRE PROTECTION DISTRICT NO. 3

PROPOSITION NO. 1

Board of Commissioners – Proposition Authorizing Increase of Existing Property Tax Levies

The proposition will authorize the Board of Commissioners of the District to restore its regular property tax levy to an amount not to exceed \$1.35 per \$1,000.00 of assessed valuation. (This shall not be construed to authorize an excess levy and shall be subject to other applicable statutory limits.)

Should this Proposition be enacted into law?

YES...

NO...

No statement for or against submitted

Fire Protection District No. 3 explanatory statement:

Clark County Fire Protection District No. 3 seeks voter approval as provided by the limitations set forth in RCW 84.55 to authorize the Board of Fire District Commissioners to increase its regular property tax levy to an amount not to exceed \$1.35 per thousand dollars of assessed value of property in the District.

CLARK COUNTY FIRE PROTECTION DISTRICT NO. 6

PROPOSITION NO. 1

Emergency Medical Services Property Tax Levy

Shall Clark County Fire Protection District No. 6 be authorized to impose regular emergency medical services property tax levies of \$.45 or less per thousand dollars of assessed valuation for each of six consecutive years?

YES...

NO...

Statement for:

The highly skilled professionals of Fire District 6 provide fire, rescue and emergency medical services at the paramedic level 24 hours a day, seven days a week. They do this for the Hazel Dell, Lakeshore, Felida, Salmon Creek, Mt. Vista, and Fairgrounds communities. The passage of this *replacement* Emergency Medical Services levy will allow Fire District 6 to continue to provide the exceptional level of paramedic service our communities have relied upon for the past 24 years. The extraordinary population growth in our fire district makes the passage of this replacement levy critical. The funding now in place *ends* December 31, 2004. *This levy supports your advanced life support services from Fire District 6.* During the last ten years, your calls for medical assistance to your fire department have averaged an increase of over 8% *per year* – a rate that is rising faster than the population and funding levels under the I-747 budget limits, passed in 2001. A *yes* vote on your ballot will keep Firefighter/Paramedics on duty and will allow Fire District 6 to maintain the current level of service to the communities they protect and serve. Vote *yes* on September 14 because rapid emergency medical paramedic response makes a difference.

Written by: Citizens For Paramedics
Ila Stanek, Chair; Michele Cotner; Bud Van Cleve

Rebuttal of statement against:

There is *no* confusion.

Fact: Without this funding FD6 will be forced to reduce firefighter/paramedic services by up to 22%. While EMS levies and firefighting levies are separate, all paramedics *are* firefighters. Failing to pass this EMS levy directly affects paramedic services to our community.

There was *no* lawsuit. It was a union grievance and arbitrated settlement.

There is an absolute necessity to maintain paramedic services.

Vote *yes* for EMS.

Written by:
Citizens for Paramedics
Ila Stanek, Chair; Michele Cotner,
Bud Van Cleve
Web site: www.paramedicssavelives.com

Fire Protection District No. 6 explanatory statement

Fire protection districts within Washington State have the authority to provide emergency medical services to the citizens of their district. To fund these services, a special six year levy is authorized and may be collected if approved by the voters of the fire district. If the voters of Fire Protection District No. 6 approve this replacement levy at the rate of \$0.45 per \$1000 of assessed valuation at the September 14, 2004 election, the District will be authorized for the next six years to continue to collect the property tax levy necessary to provide emergency medical services.

Statement against:

Taxpayers have been good supporters of Fire District 6 and a reasonable levy proposal for EMS services is justified. This levy proposal, \$.45 per thousand, 50% more than the present one, is excessive. Don't be confused. Fire District 6 will continue to offer responsive medical emergency services without the 50% increase.

Fire District 6 Commissioners have taken a cavalier approach to the management of the District. Twelve months ago, when presented with a long-range budget forecast of rising expenses and flat revenue projections, the commissioners said, "we don't believe this forecast," and voted "business as usual."

They voted not to explore ways to consolidate management and purchasing functions with adjacent fire departments. The settlement of a District 6 wrongful termination lawsuit wasted hundreds of thousands of dollars more. The District has made little effort to cut operating expenses or reduce its excessive number of Chiefs. Clearly, there is plenty of room for improved management before demanding a 50% increase in the EMS levy.

District Commissioners should reduce management overhead expenses – not threaten to reduce emergency medical services.

Voters need to reject this proposed replacement levy and demand Commissioners come back with a more realistic one. The current EMS levy rate of \$.30 per thousand, would be a good place to start!

Vote *no* on Fire District 6 EMS Replacement Levy.

Written by: Supporters of Fire District 6
Mike Greene, Chair

Rebuttal of statement for:

Fire District 6 does not need a 50% increase in EMS funding to continue to provide the current level of medical services. EMS staffing is adequate. Response times exceed the national standard. District 6 will not spend 50% more on EMS services. This 50% hike in the EMS Levy rate is a ploy to solve other financial management problems in the district. Demand a \$.30 levy rate, not \$.45 per thousand. *Vote no.*

Written by:
Supporters of Fire District 6

CLARK COUNTY FIRE PROTECTION DISTRICT NO. 10

PROPOSITION NO. 1

Board of Fire Commissioners – Proposition Authorizing Increase of Existing Property Tax Levies

The Board of Fire Commissioners adopted Resolution No. 07-01-2004 concerning this proposition. The Proposition will authorize the Board of Fire Commissioners of the District to set its regular property tax levy to an amount not to exceed \$1.10 per \$1,000.00 of assessed valuation. (This shall not be construed to authorize an excess levy and shall be subject to otherwise applicable statutory limits.)

Should this proposition be enacted into law?

YES...

NO...

Statement for:

Clark County Fire District 10 would like to ask the voters of the District to approve a Levy Lid Lift to \$1.10 per thousand dollars of assessed valuation. This is the first time since 1961 that we have gone to the voters to ask for an increase in property taxes. The number of emergency responses has tripled since 1993. We need to increase our revenues for several reasons. First, as a result of the approval of Initiative 747 in 2001, our revenues no longer keep pace with the growth in call volume and inflation. Second, several Engines are over 30 years old, and need to be replaced to improve reliability. Third, as our stations age they require more maintenance than our current budget allows, and improvements to provide a safe working environment.

We believe that we have demonstrated a very conservative approach to spending the money that the residents of our District have given us. We strive to make sure that we provide the best service possible for the dollars you invest. We thank you for your continued support.

Written by: Amboy Volunteer Firefighters Association
Sam Arola, President; Gordon Brooks, Rick Johnson

No statement against submitted

Fire Protection District No. 10 explanatory statement:

Clark County Fire Protection District No. 10 seeks voter approval as provided by the limitations set forth in RCW 84.55 to authorize the Board of Fire District Commissioners to increase its regular property tax levy to an amount not to exceed \$1.10 per thousand dollars of assessed value of property in the District.

CLARK COUNTY FIRE PROTECTION DISTRICT NO. 11

PROPOSITION NO. 1

Board of Commissioners – Proposition Authorizing Increase of Existing Property Tax Levies

The proposition will authorize the Board of Commissioners of the District to restore its regular property tax levy to an amount not to exceed \$1.50 per \$1,000.00 of assessed valuation. (This shall not be construed to authorize an excess levy and shall be subject to other applicable statutory limits.)

Should this Proposition be enacted into law?

YES...

NO...

Statement for:

In 1993 the voters approved a measure to raise the Fire District’s taxing authority to the full \$1.50 per \$1,000 assessed valuation. That LID lift allowed the District to accomplish a number of projects including 24-hour firefighters, an addition to the Dollars Corner station, and the purchase of a new fire engine.

Now, more than 10 years later, the Board of Fire Commissioners is asking the voters to restore the District’s levy rate back to the \$1.50. The District’s current rate is \$1.38. The additional 12 cents will generate approximately \$124,000 in additional revenue. Projects to be funded with the additional revenue include: 1) remodel/addition to the Charter Oak fire station, 2) purchase of a new rescue tool (jaws of life), 3) personnel protective equipment for the firefighters and 4) replace outdated cardiac monitors.

Several years ago voters adopted Initiative 747, the 1% limitation. That measure requires agencies, such as the Fire District to get voter approval before increasing their tax revenues. District 11 is asking for your approval. The projects listed above can not be accomplished without your approval.

Written by:
Committee to Support the LID Lift
Landis Epp

No statement against submitted

Fire Protection District No. 11 explanatory statement:

Clark County Fire Protection District No. 11 seeks voter approval as provided by the limitations set forth in RCW 84.55 to authorize the Board of Fire District Commissioners to increase its regular property tax levy to an amount not to exceed \$1.50 per thousand dollars of assessed value of property in the District.

CLARK COUNTY FIRE PROTECTION DISTRICT NO. 12

PROPOSITION NO. 1

Board of Commissioners – Proposition Authorizing Increase of Existing Property Tax Levies

The proposition will authorize the Board of Commissioners of the District to restore its regular property tax levy to an amount not to exceed \$1.41 per \$1,000.00 of assessed valuation. (This shall not be construed to authorize an excess levy and shall be subject to other applicable statutory limits.)

Should this Proposition be enacted into law?

YES...

NO...

Statement for:

Fire District 12 needs your help. The District has outgrown their old main station 1½ miles east of the Ridgefield Junction. There is no room for live-in resident firefighters. Office space is cramped. The kitchen is inadequate. There is no community meeting room. Fire truck bays are at capacity. There is not adequate room for training.

In order to continue your current level of fire and EMS service the District needs to build a new 15,000 square foot main station for approximately 3 million dollars. Anticipating the need for a new station, over the last 10 years the District has saved nearly 1 *million* dollars and acquired 3 acres at the Ridgefield Junction. New commercial, industrial, and residential construction in the District will provide funding for the second *million*.

The District needs your help to fund the final *million* dollars. The District’s proposed 10-cent levy will raise the necessary revenue to fund a 20 year bond. If you own a \$100,000 home, you would pay \$10 per year for 20 years; a \$200,000 homeowner would pay \$20.

We know budgets are tight. We know you are asked often to support many worthy causes. We ask that you prioritize your current available money and support your local fire and EMS services. Please vote yes in September for a new fire station.

Thank you for your continued support.

Written by:

Travis Smith, Gwen Laspa

No statement against submitted

Fire Protection District No. 12 explanatory statement:

Clark County Fire Protection District No. 12 seeks voter approval as provided by the limitations set forth in RCW 84.55 to authorize the Board of Fire District Commissioners to increase its regular property tax levy to an amount not to exceed \$1.41 per thousand dollars of assessed value of property in the District.

Complete text of local measures

CITY OF WASHOUGAL

Ordinance No. 1484

AN ORDINANCE providing for the submission to the voters of the City of Washougal, a proposition authorizing the City to replace the existing Emergency Medical Services Program Levy of \$0.25 per one thousand dollars of assessed valuation with a levy at the rate of \$0.50 per one thousand dollars of assessed valuation.

WHEREAS, the Citizens of Washougal have authorized a property tax levy of \$0.25 per one thousand dollars of assessed value for the purpose of funding an Emergency Medical Services Program for the last sixteen years.

AND WHEREAS, RCW 84.52.069(5) authorizes an EMS Excess Property Tax Levy to be "used only for the provision of emergency medical care or emergency medical resources, including related personnel costs, training for such personnel, and related equipment, supplies, vehicles and structures needed for the provisions of emergency medical care or emergency medical services".

AND WHEREAS, RCW 84.52.069(2) authorizes an EMS Excess Property Tax Levy of up to \$0.50 per one thousand dollars of assessed value, for duration of six years, ten years, or permanently;

AND WHEREAS, the purpose of funding the city EMS tax levy at \$0.50 per thousand is to provide a safer work environment for on-duty personnel, and to provide needed emergency response personnel on-scene for any emergency the City of Washougal may have.

AND WHEREAS, this levy would specifically allow hiring of additional personnel to increase the capacity of the City of Washougal to provide emergency medical services;

AND WHEREAS, the levy increase request would replace the current \$0.25 per thousand assessed valuation, which expires December 31, 2006, with a \$0.50 per thousand levy on assessed valuation in order to hire additional firefighter/EMS personnel. The EMS Excess Property Tax Levy would run continuously for six years beginning January 1, 2005, and expiring December 31, 2010;

AND WHEREAS, this vote would occur at the primary election on the 14th day of September, 2004, if this election is held county wide. If a county wide primary election is not held then the vote shall occur at the November 2nd, 2004 general election.

NOW THEREFORE, BE IT ORDAINED BY THE CITY COUNCIL OF THE CITY OF WASHOUGAL, WASHINGTON as follows:

Section I

The City Council hereby declares that a need exists requiring the calling of an election by the County Auditor of Clark County, Ex-officio Supervisor for Elections for said County, said Auditor is hereby requested to call and conduct an election in the City of Washougal in the manner provided by law for the purpose of submitting to the electors of the City of Washougal, for their approval or

rejection, a question of whether a tax levy should be made upon all the taxable property within the limits of the City of Washougal at the rate of \$0.50 per one thousand dollars of assessed valuation, to replace the current levy of \$0.25 per thousand dollars of assessed valuation. The election should be held on the 14th day of September, 2004 if a primary election is held county wide. If the primary election is not held county wide this election shall be submitted to the voters at the general election on the 2nd day of November, 2004.

The proceeds of said tax levy are to be used for the sole purpose of providing for the operation and maintenance of an Emergency Medical Program in the City of Washougal. If the proposition passes it will take effect on January 1, 2005 and expire December 31, 2010. Further, if the proposition passes the previous levy amount of \$0.25 per thousand dollars of assessed valuation shall expire simultaneously with the beginning of the increased levy amount.

Section II

The ballot title of the aforesaid proposition shall be as follows:

Proposition No. _____ Emergency Medical Program Excess Levy. Shall the City of Washougal replace an existing Emergency Medical Services property tax levy of \$0.25 per one thousand dollars of assessed valuation with a tax levy of \$0.50 per thousand of assessed valuation for six (6) consecutive years commencing on January 1, 2005 and expiring December 31, 2010.

The proceeds of the levy shall be used exclusively to continue to provide emergency medical services in the City of Washougal.

TAX LEVY INCREASE – YES

TAX LEVY INCREASE – NO

Section III

The City Clerk is hereby authorized and directed to certify said proposition to the Supervisor of Elections for Clark County, Washington, forthwith as provided by law.

Section IV

The County Supervisor of Elections and/or the City Clerk is hereby authorized, directed and empowered to cause notices of such election to be given for the time in the manner and form required by the laws of the State of Washington, and the ordinances of the City of Washougal, and to take all steps necessary to bring about and carry out such election.

Section V

This ordinance shall take effect five (5) days after it's passage and posting according to law.

PASSED by the Council for the City of Washougal at a regular meeting the 21st day of June, 2004.

City of Washougal, Washington

George Jeffrey Guard, Mayor

ATTEST:

Rabeca Hasart, Finance Director/City Clerk

APPROVED AS TO FORM:

Donald L. English, City Attorney

CAMAS SCHOOL DISTRICT No. 117

RESOLUTION NO. 03-10

A RESOLUTION of the Board of Directors of Camas School District No. 117, Clark County, Washington, providing for the submission to the qualified electors of the district at a special election to be held therein on September 14, 2004, of the proposition of whether excess taxes should be levied in the amounts of \$706,014 in 2004 for collection in 2005, \$741,434 in 2005 for collection in 2006, \$778,625 in 2006 for collection in 2007, for the District's Capital Projects Fund for technology improvements, equipment and training.

WHEREAS, the educational facilities of Camas School District No. 117, Clark County, Washington (the "District"), including technology facilities are in need of improvements and expansion to meet the current and future educational needs for its students; and

WHEREAS, funds available to the District will be insufficient to enable the District to implement such projects; and

WHEREAS, in order to support the cost of these projects as found necessary by the Board of Directors, it is deemed advisable that the District levy a tax upon all the taxable property within the District in excess of the annual tax the District is permitted by law to levy without a vote of the people, such levy to be made for three years commencing in 2004 for collection in the school years from 2004-2005 through 2006-07 inclusive, as authorized by Article VII, Section 2 of the State Constitution and RCW 84.52.053; and

WHEREAS, the question of whether or not such excess tax may be levied must be submitted to the qualified electors of the District for their ratification or rejection; and

WHEREAS, the conditions here and above set forth create an emergency which requires the holding of a special election in the District;

NOW THEREFORE, BE IT RESOLVED BY THE BOARD OF DIRECTORS OF CAMAS SCHOOL DISTRICT NO. 117, CLARK COUNTY, WASHINGTON as follows:

Section 1. Finding. It is hereby found and declared that the welfare of the students and other residents of the District requires the District to carry out the improvements hereinafter provided.

Section 2. Authorization of Improvements. The District shall modernize its educational facilities through the acquisition and installation of technology systems, including computers, and implementation support, and shall make other Capital Projects Fund expenditures as found necessary by the Board of Directors.

The District may repay any obligations hereafter incurred for the foregoing purposes.

If available funds are sufficient, the District shall acquire, equip and make other capital improvements to the facilities of the District, all as

the Board of Directors finds necessary; provided that such funds may be used only to support the modernization and replacement of technology in school facilities or implementation of the District's technology plan.

If the District shall determine that it has become impracticable to accomplish any of such improvements or portions thereof by reason of changed conditions or needs, incompatible development, costs substantially in excess of those estimated, or acquisition by a superior governmental authority, the District shall not be required to accomplish such improvement and may apply levy proceeds as set forth in this section. If any or all of the improvements have been completed, or their completion duly provided for, or their completion found to be impractical, the District may apply the levy proceeds or any portion thereof to other portions of the improvements or to other capital purposes of the District, as the District in its discretion shall determine. Notwithstanding any provision of this resolution to the contrary, levy proceeds may only be used to support the construction, modernization or remodeling of school facilities or implementation of the District's technology facilities plan.

Section 3. Authorization of Levies. It is hereby found and declared that an emergency exists requiring the submission to the qualified electors of the District of the proposition whether the District shall make the Capital Projects Fund levies for their ratification or rejection at a special election to be held on September 14, 2004. For the purpose of providing funds necessary for the needs described in Section 2 above, the Clark County Auditor, as ex-officio supervisor of elections in Clark County, is hereby requested to find the existence of such an emergency and to call and conduct such special election to be held within the District on such day and to submit to the qualified electors of the District for their approval or rejection, a proposition providing for tax levies for the Capital Projects Fund for six years, commencing in 2004, producing dollar amounts at estimated tax rates per thousand dollars of assessed value to produce such amounts, in excess of the maximum amount tax levy permitted by law to be levied within the District without a vote of the electors, all as follows:

- A. \$706,014, said levy to be made in 2004 for collection in 2005;
- B. \$741,434, said levy to be made in 2005 for collection in 2006;
- C. \$778,625, said levy to be made in 2006 for collection in 2007;

The estimated levy rate depends upon the final dollar amount of assessed value of the property within the District. At this time, based upon information provided by the County Assessor's office, the estimated levy rate for the 2004 levy is \$0.24 per thousand dollars of assessed valuation, the estimated levy rate for the 2005 levy is \$0.24 per thousand dollars of assessed valuation, the estimated levy rate for 2006 is \$0.24 per thousand dollars of assessed valuation. The exact levy rate shall be adjusted based upon the actual assessed value of the property within the District at the time of the levy.

Section 4. Approval of Form of Ballot.

The Secretary of the Board of Directors is hereby

authorized and directed to certify said proposition substantially in the following form:

**PROPOSITION NO. 1
CAMAS SCHOOL DISTRICT NO. 117
REPLACEMENT CAPITAL LEVY FOR
TECHNOLOGY**

The Board of Directors passed Resolution #03-10 concerning this proposition. This proposition authorizes the acquisition of educational technology and equipment, including classroom computers to support instruction; and authorizes the following excess levies, in place of an expiring levy, for such purposes on all taxable property within the District:

| Collection Years | Approximate Levy Rate/\$1,000 | |
|---------------------|-------------------------------------|----------------|
| | Assessed Value | Levy Amount |
| 2005 | \$0.24 | \$706,014 |
| 2006 | \$0.24 | \$741,434 |
| 2007 | \$0.24 | \$778,625 |

all as provided in District Resolution No. 03-10. Should this proposition be approved?

- YES.....()
- NO.....()

The Secretary of the Board of Directors of the District is hereby authorized and directed to deliver certified copies of this resolution to the Clark County Auditor.

ADOPTED by the Board of Directors of Camas School District No. 117, Clark County, Washington, at a regular meeting thereof, held this 20th day of July, 2004.

CAMAS SCHOOL DISTRICT NO. 117
CLARK COUNTY, WASHINGTON
Marcia W. Johnson, President and Director
Casey O'Dell, Director
Mel Cardon, Director
Dave Lattanzi, Director

ATTEST:
Albert Davidian, Secretary, Board of Directors

CERTIFICATE

I, the undersigned, Secretary of the Board of Directors of Camas School District No. 117, Clark County, Washington (the "District"), and keeper of the records of the Board of Directors (the "Board"), DO HEREBY CERTIFY:

1. That the attached resolution is a true and correct copy of Resolution No. 03-10 of the Board (the "Resolution"), duly adopted at a regular meeting thereof held on the 20th day of July, 2004.

2. That said meeting was duly convened and held in all respects in accordance with law, and to the extent required by law, due and proper notice of such meeting was given; that a legal quorum was present throughout the meeting and a legally sufficient number of members of the Board voted in the proper manner for the adoption of the Resolution; that all other requirements and proceedings incident to the proper adoption of the Resolution have been duly fulfilled, carried out and otherwise observed; and that I am authorized to execute this

certificate.

IN WITNESS WHEREOF, I have hereunto set my hand this 20th day of July, 2004.

Albert Davidian, Secretary, Board of Directors

RIDGEFIELD SCHOOL DISTRICT NO. 122

RESOLUTION NO. 2003-07

A RESOLUTION of the Board of Directors of Ridgefield School District No. 122, Clark County, Washington, providing for the form of the ballot proposition and specifying certain other details concerning submission to the qualified electors of the district at a special election to be held therein on September 14, 2004, of a proposition for the issuance of its general obligation bonds in the aggregate principal amount of \$1,000,000, or so much thereof as may be issued under the laws governing the indebtedness of school districts for the purpose of providing funds to acquire property for District use, do preparatory work toward construction of a new school, and any other projects deemed necessary by the Board and authorizing the Superintendent or Business Manager to submit a request for eligibility for the Washington State School District Credit Enhancement Program.

WHEREAS, land, added capacity, modernization and system improvements to school facilities are needed in Ridgefield School District No. 122, Clark County, Washington (the "District"), in order to provide the students of the District with adequate, proper and safe educational facilities; and

WHEREAS, in order to provide part of the funds to enable the District to acquire property, do preparatory work toward construction of a new school, and any other projects deemed necessary by the Board, it is deemed necessary and advisable that the District issue and sell its unlimited tax levy general obligation bonds in the principal amount of \$1,000,000; and

WHEREAS, the Constitution and laws of the State of Washington (including RCW 28A.530.010 and RCW 84.52.056) provide that the question of whether or not such bonds may be issued and sold for such purposes and taxes levied to pay such bonds must be submitted to the qualified electors of the District for their ratification or rejection;

WHEREAS, if the proposition is approved, the District is planning for the issuance and sale of the Bonds; and

WHEREAS, the State Legislature in 1999, approved Senate Joint Resolution 8206, which has been codified as RCW ch. 39.98 (the "Credit Enhancement Act") for the purpose of establishing a credit enhancement program (the "Program") for voter-approved school district general obligation bonds; and

WHEREAS, Section 39.98.040 of the Credit Enhancement Act authorizes the state treasurer to make a determination that a school district is eligible for participation in the Program if the state treasurer determines that the district is eligible under rules adopted by the state finance committee; and

WHEREAS, if the proposition is approved

and to the extent that the Program demonstrates substantial savings to the taxpayers of the District, the District wishes to participate in the Program;

NOW, THEREFORE, BE IT RESOLVED by the Board of Directors of Ridgefield School District No. 122, Clark County, Washington, as follows:

Section 1. Findings. This Board of Directors (the "Board") hereby finds and declares that the best interest of the students and other inhabitants of the District require the District to carry out the plans hereinafter provided at the time or times and in the order deemed most necessary and advisable by the Board.

Section 2. Capital Improvements. The District shall:

- purchase a site for construction of a new school;
- pay for the costs of necessary preparatory work towards the construction of a new school; and
- modernize and upgrade systems at the four district schools.

The cost of all necessary preparatory work towards construction of a new school may include, but shall not be limited to, the cost of all necessary architectural, engineering, and other consulting services, inspection and testing, administrative and relocation expenses, site acquisition, on and off-site utilities, related improvements and other costs incurred in connection with the making of the foregoing capital improvements shall be deemed a part of the costs of such improvements.

If available funds are sufficient from the proceeds of bonds authorized for the above purposes, and state or local circumstances require, the District shall use such funds to pay the principal of or interest on the Bonds or acquire, construct, equip and make other capital improvements to the facilities of the District, all as the Board of Directors may determine, after holding a public hearing thereon pursuant to RCW 28A.530.020.

The District shall determine the application of available moneys as between the various projects set forth above so as to accomplish, as nearly as may be, all improvements described or provided for in this section. The District shall determine the exact extent and specifications for construction of structures or other improvements.

If the Board shall determine that it has become impractical to accomplish any of such improvements or portions thereof by reason of state or local circumstances, including changed conditions, incompatible development or costs substantially in excess of those estimated, the District shall not be required to accomplish such improvements and may apply the bond proceeds or any portion thereof to other portions of the improvements, to other capital improvements or to payment of principal of or interest on the bonds, as the Board may determine after holding a public hearing thereon pursuant to RCW 28A.530.020.

In the event that the proceeds of sale of the bonds, plus any other moneys of the District legally available, are insufficient to accomplish all of the capital improvements provided by this section, the District shall use the available funds for paying the cost of those improvements for which the bonds

were approved deemed by the Board most necessary and in the best interest of the District.

The District does not expect to receive matching funds from the State of Washington pursuant to RCW 28A.530.020.

Section 3. Authorization of Bonds. For the purpose of providing part of the funds necessary to pay the cost of purchasing property described in Section 2 hereof, together with incidental costs and costs related to the sale and issuance of the bonds, the District shall issue and sell its unlimited tax levy general obligation bonds in the principal amount of not to exceed \$1,000,000. The balance of the cost of such improvements shall be paid out of any moneys which the District now has or may later have on hand which are legally available for such purposes and out of possible state or federal grants of money. None of said bond proceeds shall be used for the replacement of equipment or for any other than a capital purpose. Such bonds shall be issued in an amount not exceeding the amount approved by the qualified electors of the District as required by the Constitution and laws of the State of Washington or exceeding the amount permitted by the Constitution and laws of the State of Washington.

Section 4. Details of Bonds. The bonds provided for in Section 3 hereof shall be sold in such amounts and at such time or times as deemed necessary and advisable by this Board and as permitted by law, shall bear interest at a rate or rates not to exceed the maximum rate permitted by law at the time the bonds are sold, and shall mature in such amounts and at such times within a maximum term of ten (10) years from the date of issue, but may mature at an earlier date or dates, as authorized by this Board and as provided by law. Said bonds shall be general obligations of the District and, unless paid from other sources, both principal thereof and interest thereon shall be payable out of annual tax levies to be made upon all the taxable property within the District without limitation as to rate or amount and in excess of any constitutional or statutory tax limitations. The exact date, form, terms and maturities of said bonds shall be as hereafter fixed by resolution of the Board of Directors. After voter approval of the bond proposition and in anticipation of the issuance of such bonds, the District may issue short term obligations as authorized and provided by Chapter 39.50 RCW. The proceeds of such bonds may be used to redeem and retire short term obligations or to reimburse the District for expenditures previously made for such improvements.

Section 5. Election. It is hereby found and declared that an emergency exists requiring the District to submit to the qualified electors of the District the proposition of whether or not the District shall issue the Bonds at a special election to be held on September 14, 2004. The Clark County Auditor as ex officio supervisor of elections is hereby requested also to find the existence of such emergency and to call and conduct the special election to be held within the District and to submit to the qualified electors of the District the proposition set forth below. The Secretary of the Board is hereby authorized and directed to certify the proposition to said officials in the following form:

PROPOSITION NO. 1
RIDGEFIELD SCHOOL DISTRICT NO. 122
GENERAL OBLIGATION BONDS – \$1,000,000

The Board of the Ridgefield School District No. 122 passed Resolution #2003-07 concerning this proposition. This proposition authorizes the District to acquire a site and commence preparatory work for the construction of a new school and upgrade and modernize systems at the four district schools, issue \$1,000,000 of general obligation bonds maturing within a maximum term of 10 years, and levy property taxes annually, in addition to regular tax levies, to repay such bonds, all as provided in Resolution #2003-07. Shall this proposition be:

APPROVED? ... () REJECTED? ... ()

The polls for such special election shall be open from 7:00 o'clock A.M. to 8:00 o'clock P.M.

The Secretary of the Board of Directors is hereby authorized to deliver a certified copy of this resolution to the Clark County Auditor.

Section 6. Request for Eligibility for the Credit Enhancement Program. In preparation for the issuance and sale of the bonds after approval by the voters, the Board of Directors hereby requests that the State Treasurer issue a certificate of eligibility in favor of the District for participation by the District in the Program with respect to the bonds. The Superintendent and/or the Business Manager are hereby authorized and directed (following voter approval) to submit such applications, resolutions and certifications as shall be required by the State Treasurer in reviewing the District's request for participation.

Section 7. Severability. In the event that any provision of this resolution shall be held to be invalid, such invalidity shall not affect or invalidate any other provision of this resolution or the Bonds, but they shall be construed and enforced as if such invalid provision had not been contained herein; provided, however, that any provision which shall for any reason be held by reason of its extent to be invalid shall be deemed to be in effect to the extent permitted by law.

Section 8. Effective Date. This resolution shall become effective immediately upon its adoption.

ADOPTED by the Board of Directors of Ridgefield School District No. 122, Clark County, Washington, at a regular meeting held July 27, 2004.
RIDGEFIELD SCHOOL DISTRICT NO.122,
CLARK COUNTY, WASHINGTON

Wendi Morris, Chair and Director; Chris R. Swindell, Kathy Koller, Joseph B. Leadingham, Raymond J. Warner, Directors.
ATTEST; Mary M. Vagner, Secretary, Board of Directors

CERTIFICATE

I, the undersigned, Secretary of the Board of Directors of Ridgefield School District No. 122, Clark County, Washington (the "District"), and keeper of the records of the Board of Directors (the "Board"), DO HEREBY CERTIFY:

1. That the attached resolution is a true and correct copy of Resolution No. 2003-07 of the Board (herein called the "Resolution"), duly adopted at

a regular meeting thereof held on the 27th day of July, 2004.

2. That said meeting was duly convened and held in all respects in accordance with law, and to the extent required by law, due and proper notice of such meeting was given; that a legal quorum was present throughout the meeting and a legally sufficient number of members of the Board voted in the proper manner for the adoption of said Resolution; that all other requirements and proceedings incident to the proper adoption of said Resolution have been duly fulfilled, carried out and otherwise observed; and that I am authorized to execute this certificate.

IN WITNESS WHEREOF, I have hereunto set my hand this 27th day of July, 2004.

Mary M. Vagner, Secretary, Board of Directors

CLARK COUNTY FIRE PROTECTION
DISTRICT NO. 3

**RESOLUTION 2004-03
RESOLUTION PROVIDING FOR THE SUB-
MISSION OF LEVY
(SPECIAL ELECTION)**

A RESOLUTION OF THE BOARD OF COMMISSIONERS OF CLARK COUNTY FIRE PROTECTION DISTRICT NO. 3, PROVIDING FOR THE SUBMISSION TO THE QUALIFIED ELECTORS OF THE DISTRICT AT A SPECIAL ELECTION TO BE HELD WITHIN THE DISTRICT ON SEPTEMBER 14, 2004, IN CONJUNCTION WITH THE STATE PRIMARY ELECTION TO BE HELD ON THE SAME DATE, OF A PROPOSITION AUTHORIZING A LEVY OF A PROPERTY TAX NOT TO EXCEED \$1.35 PER \$1,000.00 OF TRUE AND ASSESSED VALUATION SUBJECT TO OTHERWISE APPLICABLE STATUTORY LIMITATIONS.

Background: WHEREAS, it is the judgment of the Board of Commissioners of the District that it is essential and necessary for the protection of the health and life of the residents of the District that fire and emergency medical services be provided by the District. The accelerated demands for, and increasing costs of, providing these services will necessitate the expenditure of revenues for maintenance, operations, buildings, and equipment in excess of those which can be provided by the District's regular tax revenue levied at the current rate per \$1,000.00 of assessed valuation of taxable property within the District as limited by the 101% limitation.

Resolution: NOW, THEREFORE BE IT RESOLVED by the Board of Commissioners of Clark County Fire Protection District No. 3, Clark County, Washington as follows:

Section 1. In order to provide fire protection, prevention and emergency medical services in the District, it is necessary for the District to obtain operate and maintain emergency fire and medical aid vehicles and facilities staffed by properly trained personnel equipped with suitable fire fighting and emergency medical equipment.

Section 2. In order to provide the revenue adequate to pay the costs of providing adequate

life protection services and facilities as described in Section 1 and to assure the continuation of such services, the District shall, in accordance with RCW 84.55.050, remove the limitation on regular property taxes imposed by RCW 84.55.010, and levy beginning in 2004 and collect beginning in 2005, pursuant to RCW 52.16.130, RCW 52.16.140 and RCW 52.16.160, a general tax on taxable property within the District at a rate of \$1.35 per \$1,000.00 of assessed valuation subject to otherwise applicable statutory limits.

Section 3. The District currently levies a regular property tax at the rate of approximately \$1.277 per \$1,000 of assessed valuation.

Section 4. There shall be submitted to the qualified electors of the District for their ratification or rejection, at a special election on September 14, 2004, in conjunction with the state primary election to be held on the same date, the question of whether or not the regular property tax levy of the District should be increased to \$1.35 per \$1,000.00 of true and assessed valuation, subject to otherwise applicable statutory limitations. The Board of Commissioners hereby requests the auditor of Clark County, as ex-officio Supervisor of Elections, to declare that an emergency exists and to call such election, and to submit the following proposition at such election, in the form of a ballot title substantially as follows:

PROPOSITION

Clark County Fire Protection District No. 3
Board of Commissioners – Proposition Authorizing
Increase of Existing Property Tax Levies.

The proposition will authorize the Board of Commissioners of the District to restore its regular property tax levy to an amount not to exceed \$1.35 per \$1,000.00 of assessed valuation. (This shall not be construed to authorize an excess levy and shall be subject to other applicable statutory limits.)

Should this Proposition be enacted into law?

Yes No

Adoption: ADOPTED by the Board of Commissioners of Clark County Fire Protection District No. 3, Clark County, Washington, at a special open public meeting of such Board on the 23rd day of June, 2004, the following Commissioners being present and voting:

Richard Deleissegues, Commissioner
Marty James, Commissioner
Buck Heidrick, Commissioner
Steve Wrightson, Secretary

CLARK COUNTY FIRE PROTECTION
DISTRICT NO. 6

RESOLUTION NO. 2004-5

A RESOLUTION OF THE BOARD OF COMMISSIONERS OF CLARK COUNTY FIRE PROTECTION DISTRICT NO. 6, PROVIDING FOR THE SUBMISSION TO THE QUALIFIED ELECTORS OF THE DISTRICT AT A SPECIAL ELECTION TO BE HELD WITHIN THE DISTRICT ON SEPTEMBER 14, 2004, IN CONJUNCTION WITH THE STATE PRIMARY ELECTION TO BE HELD ON THE SAME

DATE, OF A PROPOSITION AUTHORIZING A LEVY OF A PROPERTY TAX NOT TO EXCEED \$.45 PER \$1,000.00 OF TRUE AND ASSESSED VALUATION IN ADDITION TO ITS REGULAR PROPERTY TAX LEVY, EACH YEAR FOR A PERIOD OF SIX CONSECUTIVE YEARS, TO BE LEVIED EACH YEAR BEGINNING IN 2004 AND ENDING IN 2009 AND TO BE COLLECTED IN EACH YEAR SUCCEEDING THE YEAR OF THE LEVY TO PROVIDE FUNDS REQUIRED BY THE DISTRICT TO ENABLE THE DISTRICT TO PROVIDE EMERGENCY MEDICAL SERVICES.

WHEREAS, it is the judgment of the Board of Commissioners of the District that it is essential and necessary for the protection of the health and life of the residents of the District that emergency medical services be provided by the District. Such services will necessitate the expenditure of revenues for maintenance, operations, equipment and personnel in excess of those which can be provided by the District's regular tax levy for collection over the next six years beginning in 2005;

NOW, THEREFORE BE IT RESOLVED by the Board of Commissioners of Clark County Fire Protection District No. 6, Vancouver, Washington as follows:

Section 1. In order to provide emergency medical services, it is necessary that the District perform the following functions:

1.1 Obtain, operate and maintain emergency medical vehicles and facilities staffed by properly trained emergency medical technicians and other medically trained personnel.

1.2 Obtain consumable medical supplies and medical appliances to equip such vehicles and facilities.

Section 2. In order to provide the revenue adequate to pay the costs of providing adequate life protection services and facilities as described in Section 1 and to maintain reserve funds sufficient to assure the continuation of such services, the District shall levy each year for a period of six consecutive years beginning in 2004 and collect each year for a period of six consecutive years, beginning in 2005, as general tax on taxable property within the District, in addition to the regular levy for maintenance and operation costs, in an amount not to exceed \$.45 per \$1,000.00 of assessed valuation of such property. The amount to be levied in 2004 and collected in 2005 is estimated to be approximately \$1,850,000.

Section 3. In accordance with RCW 84.52.069 the funds raised by such levy shall be used only for the provision of emergency medical services, including related personnel costs, training for such personnel, and related equipment, supplies, vehicles and structures needed for the provision of emergency medical services.

Section 4. There shall be submitted to the qualified electors of the District for their ratification or rejection, at a special election on September 14, 2004, in conjunction with the state primary election to be held on the same date, the question of whether or not such levy for emergency medical services, in addition to the regular levy for maintenance and operation, shall be made each year for a period of six consecutive years, the first levy

to be made in 2004 and to be collected in 2005. The Board of Commissioners hereby requests the auditor of Clark County, as ex-officio Supervisor of Elections, to find that an emergency exists, to call such special election and to submit the following proposition at such election, in the form of a ballot title substantially as follows:

PROPOSITION

Clark County Fire Protection District No. 6
Emergency Medical Services Property Tax Levy
Shall Clark County Fire Protection District No. 6 be authorized to impose regular emergency medical services property tax levies of \$.45 or less per thousand dollars of assessed valuation for each of six consecutive years?

YES___ NO___

ADOPTED by the Board of Commissioners of Clark County Fire Protection District No. 6, Vancouver, Washington, at a regular open public meeting of such Board on the 15 day of June, 2004, the following commissioners being present and voting:

James L. Jakubiak, Casey M. Collins, and Dick Spring.

Attest: R. T. Streissguth, Secretary

**CLARK COUNTY FIRE PROTECTION
DISTRICT #10**

RESOLUTION #07-01-2004

A RESOLUTION OF THE BOARD OF FIRE COMMISSIONERS OF CLARK COUNTY FIRE PROTECTION DISTRICT NO. 10, PROVIDING FOR THE SUBMISSION TO THE QUALIFIED ELECTORS OF THE DISTRICT AT A SPECIAL ELECTION TO BE HELD WITHIN THE DISTRICT ON SEPTEMBER 14, 2004, OF A PROPOSITION AUTHORIZING A LEVY OF A PROPERTY TAX NOT TO EXCEED \$1.10 PER \$1,000.00 OF TRUE AND ASSESSED VALUATION SUBJECT TO OTHERWISE APPLICABLE LIMITATIONS.

Background: WHEREAS, it is the judgment of the Board of Fire Commissioners of the District that it is essential and necessary for the protection of the health and life of the residents of the District that fire and emergency medical services be provided by the District. The accelerated demands for and increasing costs of providing these services will necessitate the expenditure of revenues for maintenance, operations, and equipment in excess of those which can be provided by the District's regular tax revenue levied at the current rate per \$1,000.00 of assessed valuation of taxable property within the District as limited by the 101% limitation.

Resolution: NOW THEREFORE, BE IT RESOLVED by the Board of Fire Commissioners of Clark County Fire Protection District No. 10, Clark County, Washington as follows:

Section 1: In order to provide fire protection, prevention, and emergency medical services in the District, it is necessary for the District to obtain, operate and maintain emergency fire and medical vehicles and facilities staffed by properly trained personnel equipped with suitable firefighting and emergency medical equipment.

Section 2: In order to provide the revenue adequate to pay the costs of providing adequate life protection services and facilities as described in Section 1 and to assure the continuation of such services, the District shall, in accordance with RCW 84.55.05, remove the limitation on regular property taxes imposed by RCW 84.55.010, and Initiative 747 and levy beginning in 2004 and collect beginning in 2005, pursuant to RCW 52.16.130 and RCW 52.16.140, a general tax on taxable property within the District at a rate of \$1.10 per \$1,000.00 of assessed valuation subject to otherwise applicable statutory limits.

Section 3: There shall be submitted to the qualified electors of the District for their ratification or rejection, at a special election on September 14, 2004 the question of whether or not the regular property tax levy of the District should be set at \$1.10 per \$1,000.00 of true and assessed valuation, subject to otherwise applicable statutory limitations. The Board of Commissioners hereby requests the Auditor of Clark County, as ex-officio Supervisor of Elections, to declare that an emergency exists and to call such election, and to submit the following proposition at such election, in the form of a ballot title substantially as follows:

PROPOSITION

**CLARK COUNTY FIRE PROTECTION
DISTRICT NO. 10**

Board of Fire Commissioners
Proposition Authorizing Increase of Existing
Property Tax Levies

The proposition will authorize the Board of Fire Commissioners of the District to set its regular property tax levy to an amount not to exceed \$1.10 per \$1,000.00 of assessed valuation. (This shall not be construed to authorize an excess levy and shall be subject to otherwise applicable statutory limits.)
Should this proposition be enacted into law?

YES___ NO___

Adoption: ADOPTED at the regular meeting of the Board of Commissioners of Clark County Fire District No. 10, on this 1st day of July, 2004 the following Commissioners being present and voting: Howard L. Cook, Richard L. Johnson; Cheryl Vincent, Secretary

**CLARK COUNTY FIRE PROTECTION
DISTRICT NO. 11**

**RESOLUTION NO. 2004-07-14
RESOLUTION PROVIDING FOR THE SUB-
MISSION OF LEVY
(SPECIAL ELECTION)**

A RESOLUTION OF THE BOARD OF COMMISSIONERS OF CLARK COUNTY FIRE PROTECTION DISTRICT NO. 11, PROVIDING FOR THE SUBMISSION TO THE QUALIFIED ELECTORS OF THE DISTRICT AT A SPECIAL ELECTION TO BE HELD WITHIN THE DISTRICT ON SEPTEMBER 14, 2004, IN CONJUNCTION WITH THE STATE PRIMARY ELECTION TO BE HELD ON THE SAME DATE, OF A PROPOSITION AUTHORIZING A LEVY OF A PROPERTY TAX NOT TO EXCEED \$1.50 PER \$1,000.00 OF TRUE AND ASSESSED

VALUATION SUBJECT TO OTHERWISE APPLICABLE STATUTORY LIMITATIONS.

Background: WHEREAS, it is the judgment of the Board of Commissioners of the District that it is essential and necessary for the protection of the health and life of the residents of the District that fire and emergency medical services be provided by the District. The accelerated demands for, and increasing costs of, providing these services will necessitate the expenditure of revenues for maintenance, operations and equipment in excess of those which can be provided by the District's regular tax revenue levied at the current rate per \$1,000.00 of assessed valuation of taxable property within the District as limited by the 101% limitation.

Resolution: NOW, THEREFORE BE IT RESOLVED by the Board of Commissioners of Clark County Fire Protection District No. 11, Clark County, Washington as follows:

Section 1. In order to provide fire protection, prevention and emergency medical services in the District, it is necessary for the District to obtain operate and maintain emergency fire and medical aid vehicles and facilities staffed by properly trained personnel equipped with suitable fire fighting and emergency medical equipment.

Section 2. In order to provide the revenue adequate to pay the costs of providing adequate life protection services and facilities as described in Section 1 and to assure the continuation of such services, the District shall, in accordance with RCW 84.55.050, remove the limitation on regular property taxes imposed by RCW 84.55.010, and Initiative 747 and levy beginning in 2004 and collect beginning in 2005, pursuant to RCW 52.16.130, RCW 52.16.140 and RCW 52.16.160, a general tax on taxable property within the District at a rate of \$1.50 per \$1,000.00 of assessed valuation subject to otherwise applicable statutory limits.

Section 3. The District currently levies a regular property tax at the rate of \$1.38 per \$1,000 of assessed valuation.

Section 4. There shall be submitted to the qualified electors of the District for their ratification or rejection, at a special election on September 14, 2004, in conjunction with the state primary election to be held on the same date, the question of whether or not the regular property tax levy of the District should be restored to \$1.50 per \$1,000.00 of true and assessed valuation, subject to otherwise applicable statutory limitations. The Board of Commissioners hereby requests the auditor of Clark County, as ex-officio Supervisor of Elections, to declare that an emergency exists and to call such election, and to submit the following proposition at such election, in the form of a ballot title substantially as follows:

PROPOSITION

Clark County Fire Protection District No. 11
– Board of Commissioners – Proposition Authorizing Increase of Existing Property Tax Levies.
The proposition will authorize the Board of Commissioners of the District to restore its regular property tax levy to an amount not to exceed \$1.50 per \$1,000.00 of assessed valuation. (This shall not be construed to authorize an excess levy and shall be subject to other applicable statutory limits.)
Should this Proposition be enacted into law?

Yes...() No...()

Adoption: ADOPTED by the Board of Commissioners of Clark County Fire Protection District No. 11, Clark County, Washington, at a regular open public meeting of such Board on the 14th day of July, 2004, the following Commissioners being present and voting: Linn S. Dollar, Jr. and James R. Johnson. Dennis E. Mason, Secretary

CLARK COUNTY FIRE PROTECTION
DISTRICT NO. 12

**RESOLUTION NO. 040511-1
RESOLUTION PROVIDING FOR THE SUB-
MISSION OF LEVY
(SPECIAL ELECTION)**

A RESOLUTION OF THE BOARD OF COMMISSIONERS OF CLARK COUNTY FIRE PROTECTION DISTRICT NO. 12, PROVIDING FOR THE SUBMISSION TO THE QUALIFIED ELECTORS OF THE DISTRICT AT A SPECIAL ELECTION TO BE HELD WITHIN THE DISTRICT ON SEPTEMBER 14, 2004, IN CONJUNCTION WITH THE STATE PRIMARY ELECTION TO BE HELD ON THE SAME DATE, OF A PROPOSITION AUTHORIZING A LEVY OF A PROPERTY TAX NOT TO EXCEED \$1.41 PER \$1,000.00 OF TRUE AND ASSESSED VALUATION SUBJECT TO OTHERWISE APPLICABLE STATUTORY LIMITATIONS.

Background: WHEREAS, it is the judgment of the Board of Commissioners of the District that it is essential and necessary for the protection of the health and life of the residents of the District that fire and emergency medical services be provided

by the District. The accelerated demands for, and increasing costs of, providing these services will necessitate the expenditure of revenues for maintenance, operations, buildings, and equipment in excess of those which can be provided by the District's regular tax revenue levied at the current rate per \$1,000.00 of assessed valuation of taxable property within the District as limited by the 101% limitation.

Resolution: NOW, THEREFORE BE IT RESOLVED by the Board of Commissioners of Clark County Fire Protection District No. 12, Clark County, Washington as follows:

Section 1. In order to provide fire protection, prevention and emergency medical services in the District, it is necessary for the District to obtain, operate and maintain emergency fire and medical aid vehicles and facilities staffed by properly trained personnel equipped with suitable fire fighting and emergency medical equipment.

Section 2. In order to provide the revenue adequate to pay the costs of providing adequate life protection services and facilities as described in Section 1 and to assure the continuation of such services, the District shall, in accordance with RCW 84.55.050, remove the limitation on regular property taxes imposed by RCW 84.55.010, and levy beginning in 2004 and collect beginning in 2005, pursuant to RCW 52.16.130, RCW 52.16.140 and RCW 52.16.160, a general tax on taxable property within the District at a rate of \$1.41 per \$1,000.00 of assessed valuation subject to otherwise applicable statutory limits.

Section 3. The District currently levies a regular property tax at the rate of approximately \$1.31 per \$1,000 of assessed valuation.

Section 4. There shall be submitted to the qualified electors of the District for their ratification or rejection, at a special election on September 14, 2004, in conjunction with the state primary election to be held on the same date, the question of whether or not the regular property tax levy of the District should be increased to \$1.41 per \$1,000.00 of true and assessed valuation, subject to otherwise applicable statutory limitations. The Board of Commissioners hereby requests the auditor of Clark County, as ex-officio Supervisor of Elections, to declare that an emergency exists and to call such election, and to submit the following proposition at such election, in the form of a ballot title substantially as follows:

PROPOSITION

Clark County Fire Protection District No. 12 – Board of Commissioners – Proposition Authorizing Increase of Existing Property Tax Levies. The proposition will authorize the Board of Commissioners of the District to restore its regular property tax levy to an amount not to exceed \$1.41 per \$1,000.00 of assessed valuation. (This shall not be construed to authorize an excess levy and shall be subject to other applicable statutory limits.) Should this Proposition be enacted into law?

Yes

No

Adoption: ADOPTED by the Board of Commissioners of Clark County Fire Protection District No. 12, Clark County, Washington, at a special open public meeting of such Board on the 11th day of May, 2004, the following Commissioners being present and voting:

Wm Hargett, Walter F. Mazna, Michael J. Lambrecht, and Dennis Groat, Commissioners; Larry Bartel, Secretary

Published by: Clark County Auditor's Office ~ Elections Department, 1408 Franklin Street, Vancouver
(360) 397-2345 ~ www.clark.wa.gov/elections



proud past, promising future

Auditor's Office
Elections Department
PO Box 8815
Vancouver WA 98666-8815

PRE-SORTED
STANDARD
U.S. POSTAGE
PAID
VANCOUVER
WASHINGTON
PERMIT NO. 130

ECRWSS

POSTAL CUSTOMER