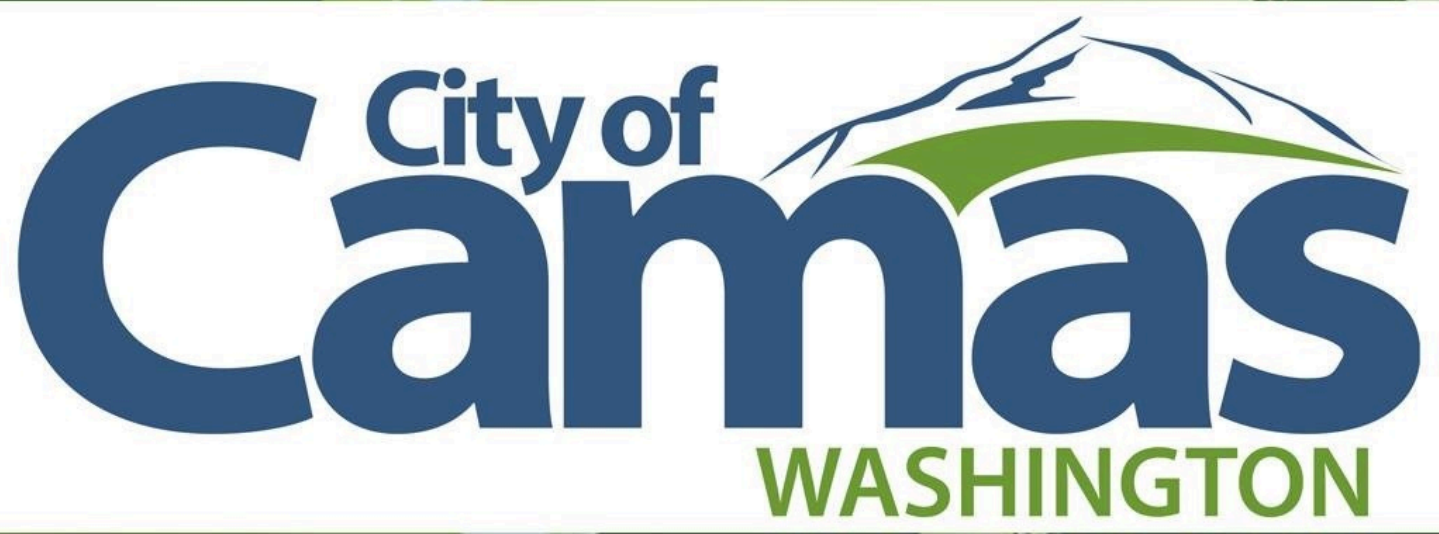
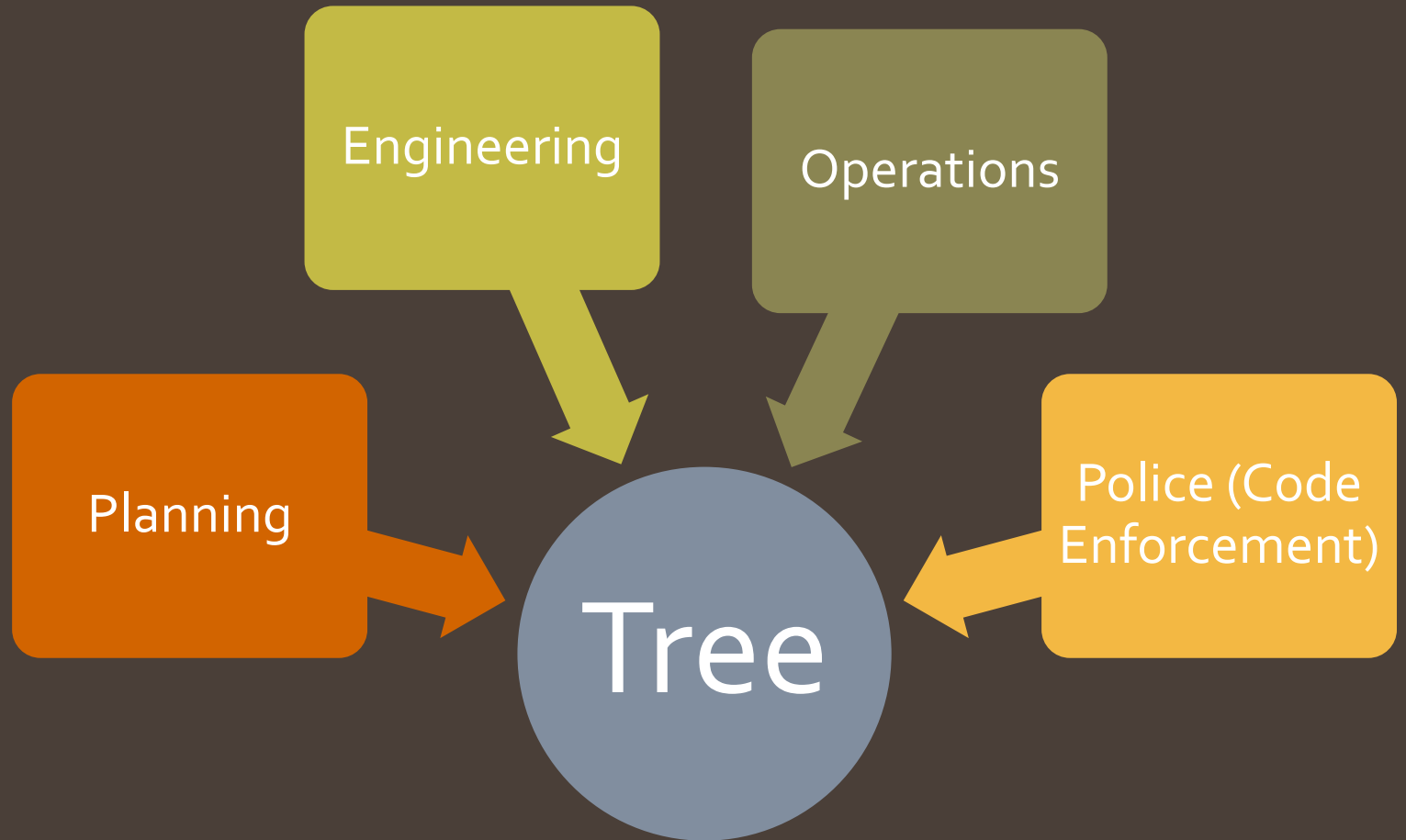




Trees in the City of Camas



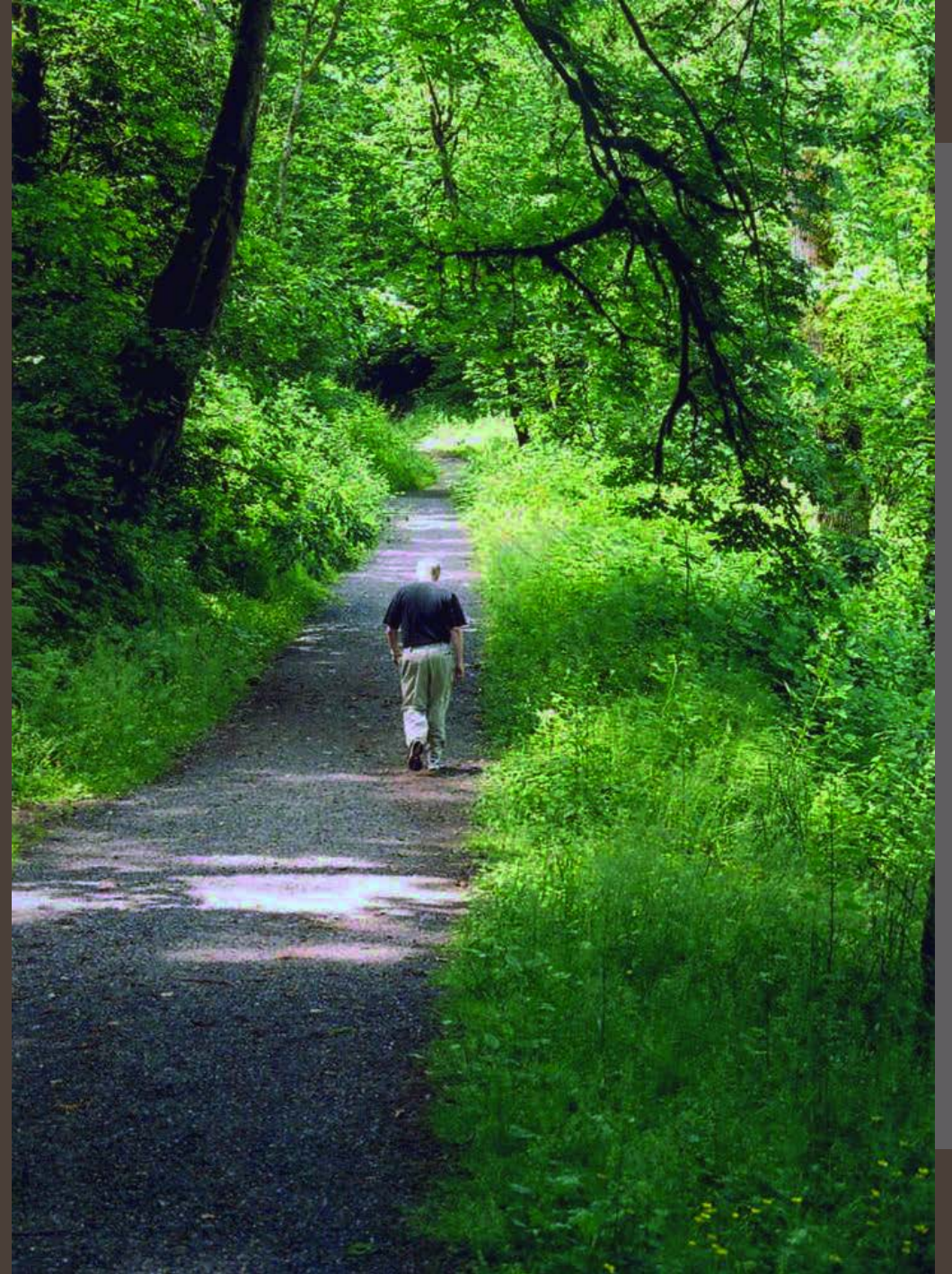
Who Manages Trees in Camas?



Operations Department

Parks & Open Space Management

- 15 Parks
- 22 Miles of Trails
- 600 Acres of Open Space
- Management of Trees in Parks



“Significant
Trees” are
protected
almost
everywhere



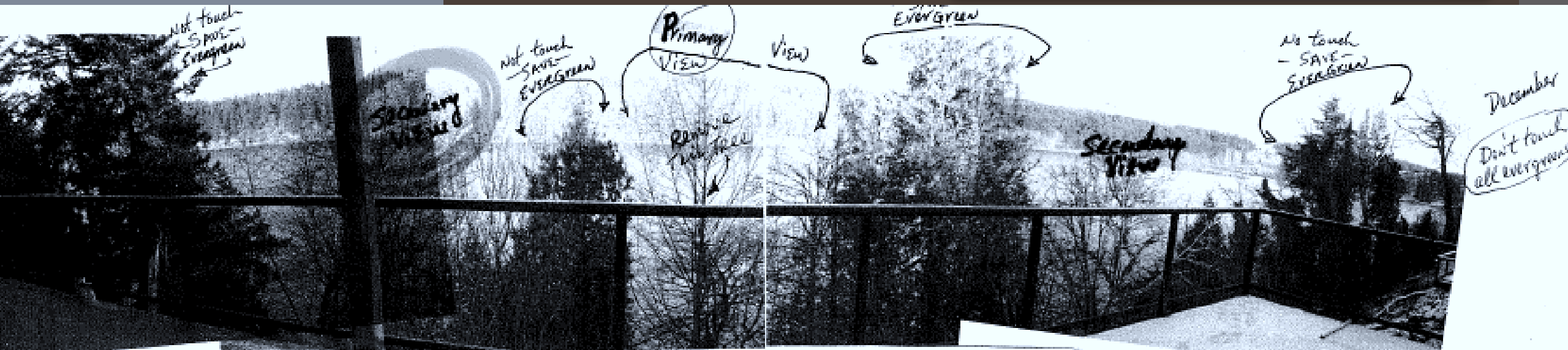
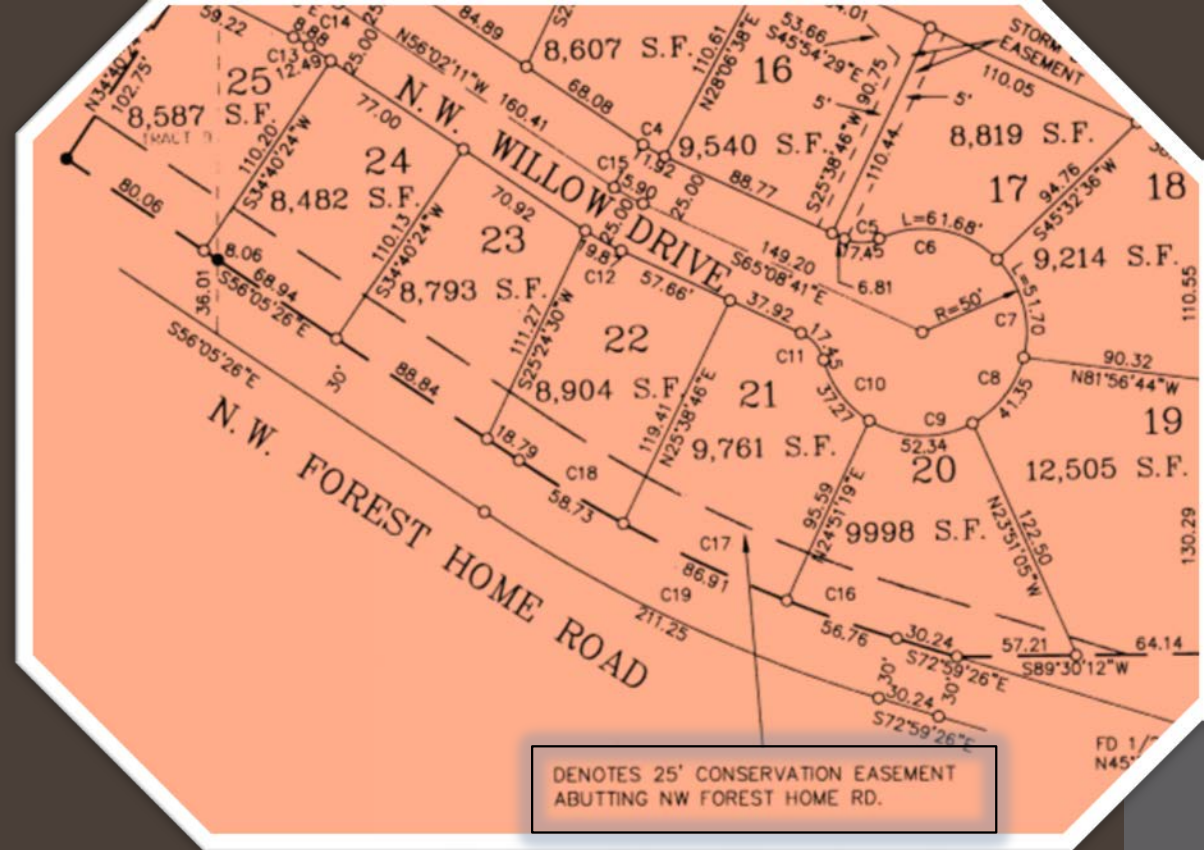
Residential Lots

Plat notes

Critical areas

Shorelines

Management plans



View Easements & Conflict Parks

❖ Lake Hills Subdivision

❖ Lacamas Shores Subdivision



Lacamas Shores Subdivision View Easements Granted

As of 01/20/2015

● = Permits issued

— = Lots eligible for view
easement permits

Phase 3:

Lot 14 (no decision, only
application found)

Lot 4 (illegal cutting investigated,
and no permits were issued.)

Phase 4:

Lot 6 (1529 NW Lacamas Dr.)

Lot 4 (1443 NW Lacamas Dr.)

Lot 13 (application, no permit)

Phase 5:

Lot 10 (2101 NW Lacamas Dr.)

Lot 11 (2121 NW Lacamas Dr.)

Lot 12 (letter in file, no permit)

Phase 6A:

Lot 7 (5826 NW El Rey Dr.)

Lot 8 (5904 NW El Rey Dr.)

Land Development & Trees



Camas adopts an Urban Tree Ordinance

September 2019



Public Trees & Critical Areas

Park Trees

- Chapter 12.32
- Increased penalties

Critical Areas

- Chapter 16.51
 - Fine is based on fee schedule
 - Replacement trees must be monitored for survival



Development Permits

Proposed Activity	Minimum Tree Density per Net Acre	Tree Replacement
New Development	20 Tree Units	20 Tree Units per acre
Residential	20 Tree Units	20 Tree Units per acre
Developed commercial and industrial properties	20 Tree Units	3 Tree Units for every 1 tree unit removed up to minimum tree density



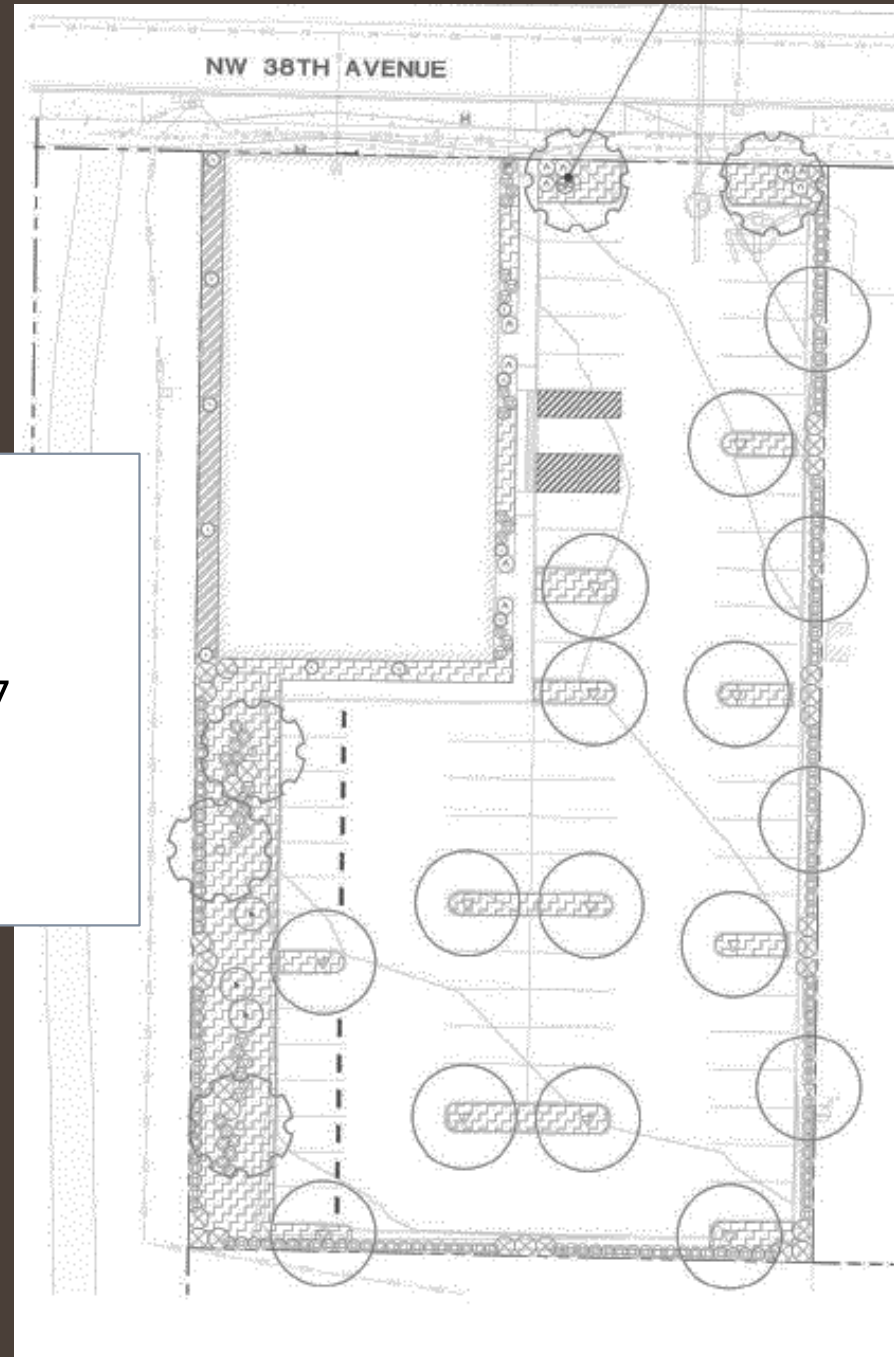
Commercial Office

Net Site Area: **0.87**

Tree Units Provided: 21

Tree Units Min. (20 T.U./Acre): 17

Actual tree units/ac.: **24**



Street Tree Removal Permit



"A tree which has lost its head will never recover it again, and will survive only as a monument of the ignorance and folly of its Tormentor."

George William Curtis