

construction will begin, project specifications including parking lot repairs and crossing improvements, and that the sewer line will be relocated. David also discussed slides 3 through 7 of the PowerPoint presentation regarding the current conditions and the project's design, and reviewed the planting plans indicating that about 3,400 plants will be added, primarily of the wetland and riparian species pursuant to the Department of Ecology's wetland manual. Ross, David, and Sandra discussed the location of the plantings and the guidance and restrictions on the types of plants to add.

David also discussed an example of a previous planting project at Douglas Carter Fisher West or East Park from 2015 and when seeding is estimated to occur at the farm. David discussed the construction access and staging at the farm as well.

Lisa and David discussed that the sewer adjustments were part of the master plan from the beginning but are part of the reason this project's costs have increased. Lisa and David also discussed the project's budget and that this is a Clean Water project.

David also indicated that the Capital Improvement Plan was adopted on November 12, 2024 and money was added to do site design work at the farm for the children's pavilion.

4:36 PM Farm Operations Guidelines updates - Matthew Baum

Matthew discussed that we are still waiting on the leases to be updated before issuing these guidelines, and that once we have them, we will share them accordingly.

4:37 PM Public Comments

There is none.

4:37 PM Open Forum - Questions and Answers

Sandra and David discussed funding that was added to the Capital Improvement Plan to bring utilities across Cougar Creek to the children's garden at the farm, as well as the purchase of a building with a restroom and that building's specifications and location.

Blair, David, and Kirk discussed the extension of the sewer's location in the Wetland Restoration project, the crossing, and the budget for the site design work.

Lisa, Matthew, David, and Ross discussed the possibility of a parks levy and how that affects levy's that various school districts are anticipating. Ross and Lisa also discussed whether surveys will be conducted regarding the funding for parks.

Sandra and Matthew discussed the process for requesting Zane's assistance on various tasks at the farm, and Bill and Matthew discussed updates regarding the new tractor at the farm.

Sandra and Matthew discussed the process for the year-end data for the farm, what type of information to send, what form(s) to use, where to send it, and how it's useful for the farm.

Ross, Kirk, and Sandra discussed whether the Advisory Team has met with the Parks Advisory Board regarding the significance of the farm.

Sandra, Bill, and Matthew discussed inviting some of the farm partners to these Advisory Team meetings to introduce themselves and explain what they do so others can learn more about them and/or their groups.

Sandra discussed having these meetings occur at the farm in the future.

4:58 PM Adjournment

Submitted by Amy Arnold, Secretary

All meetings are scheduled from 4:00 PM to 6:00 PM

DRAFT

Heritage Farm Wetland Restoration

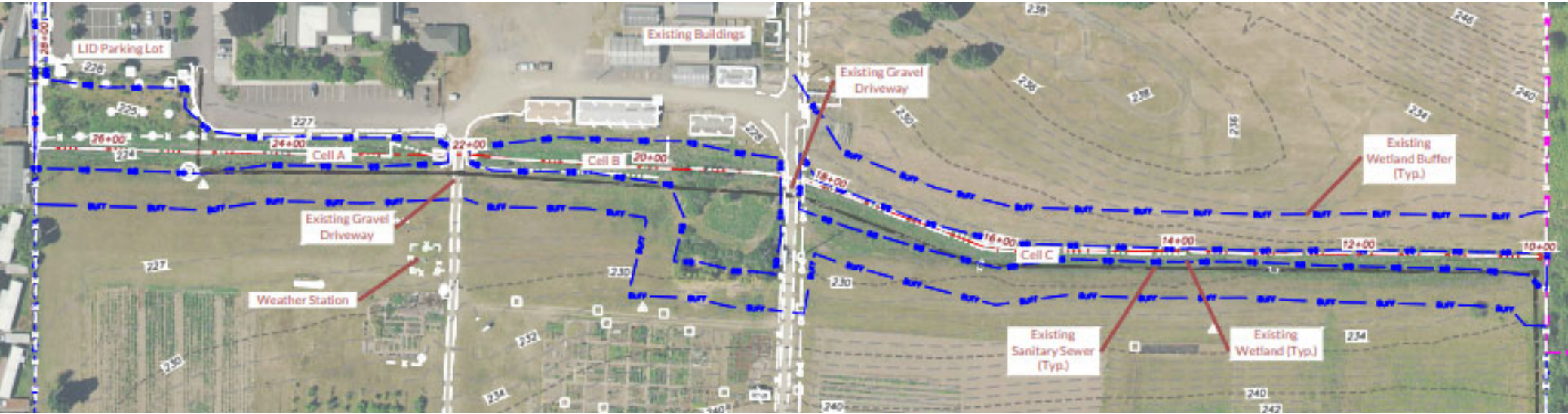


Anticipated project schedule

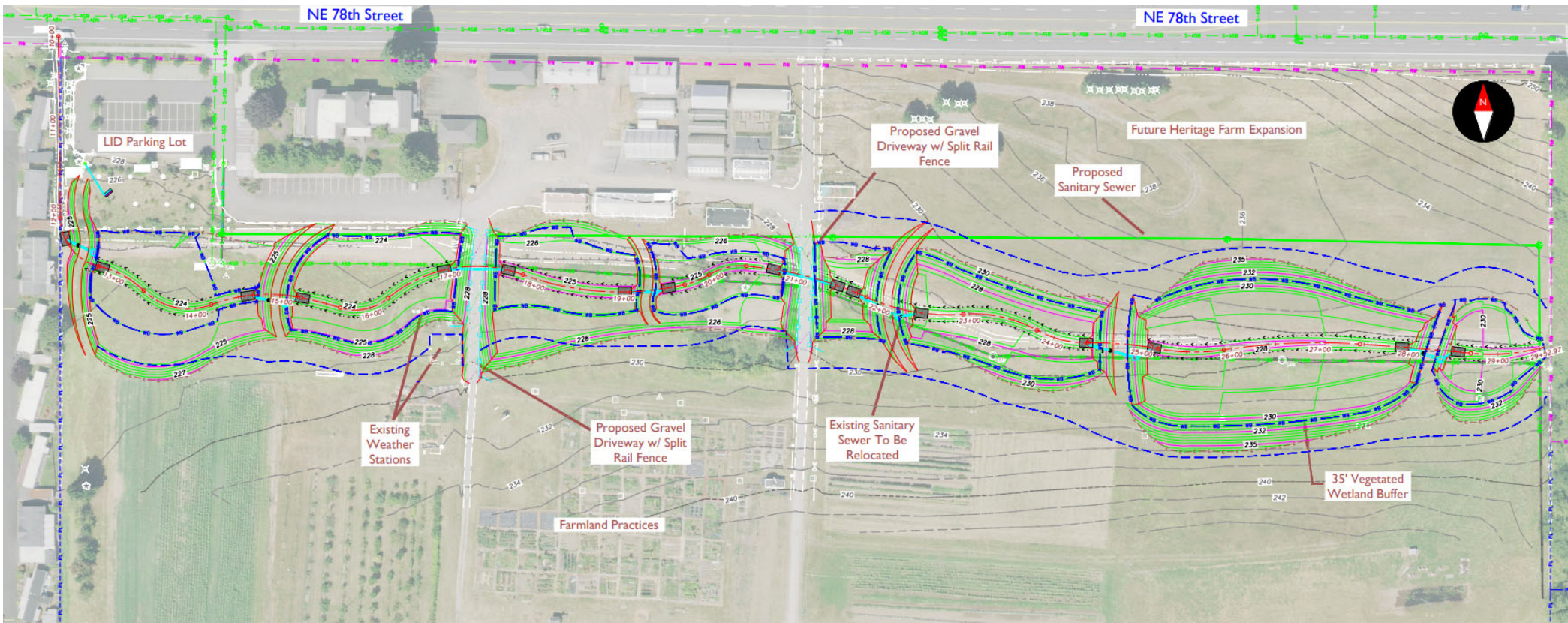
- Permit Approvals June 2024- February 2025,
- 90% Plans July 2024,
- • 99% Plans December 2024
- Final Plans March 2025
- On Advertisement March 2025
- **Begin Construction June 2025**
- **Native Plant Installation November- December 2025**
- **Substantial Completion Once initial planting is completed**
- Physical Completion 2-year plant establishment period
- Long Term Management Plan 8-year site maintenance period



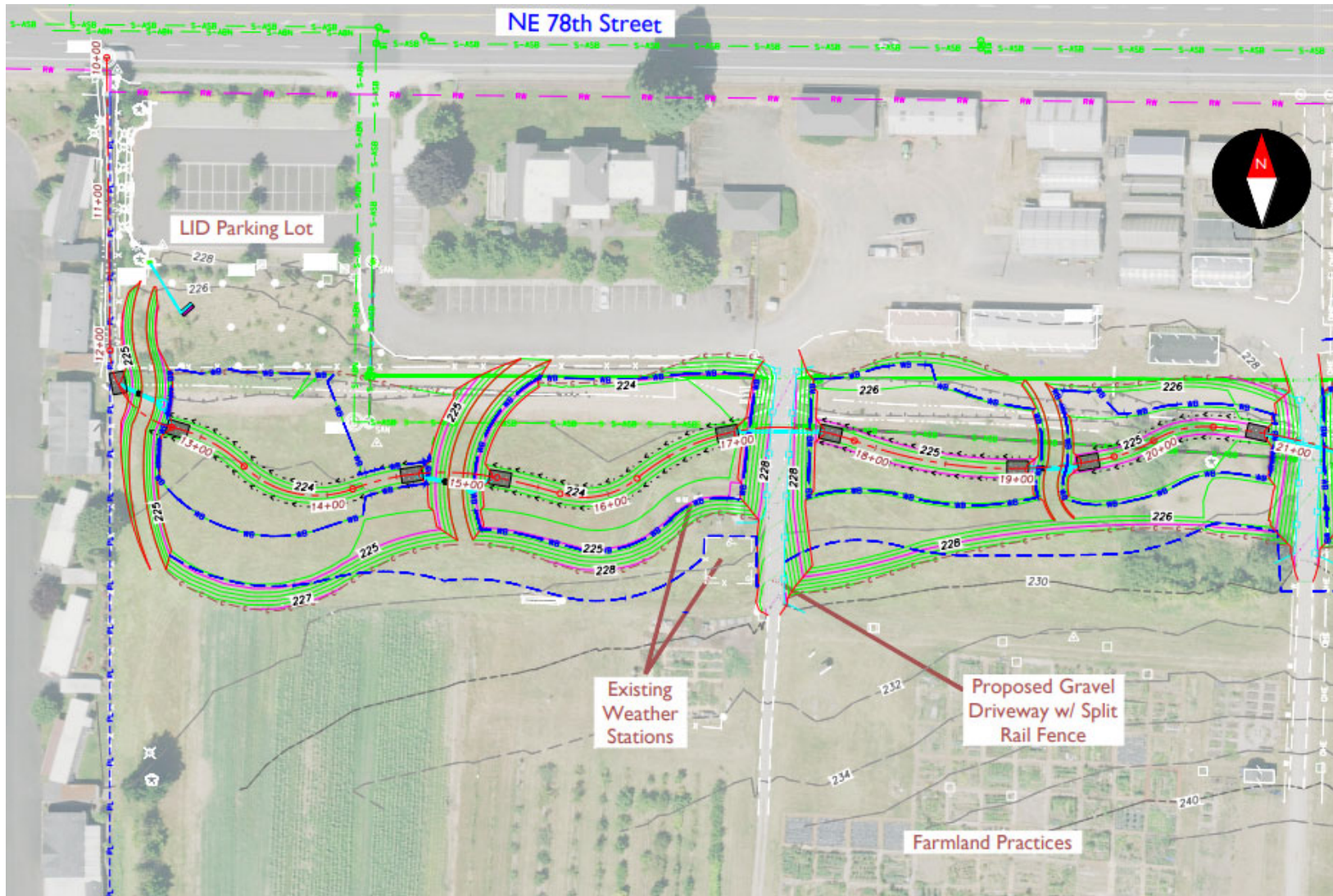
Current conditions / existing ditch



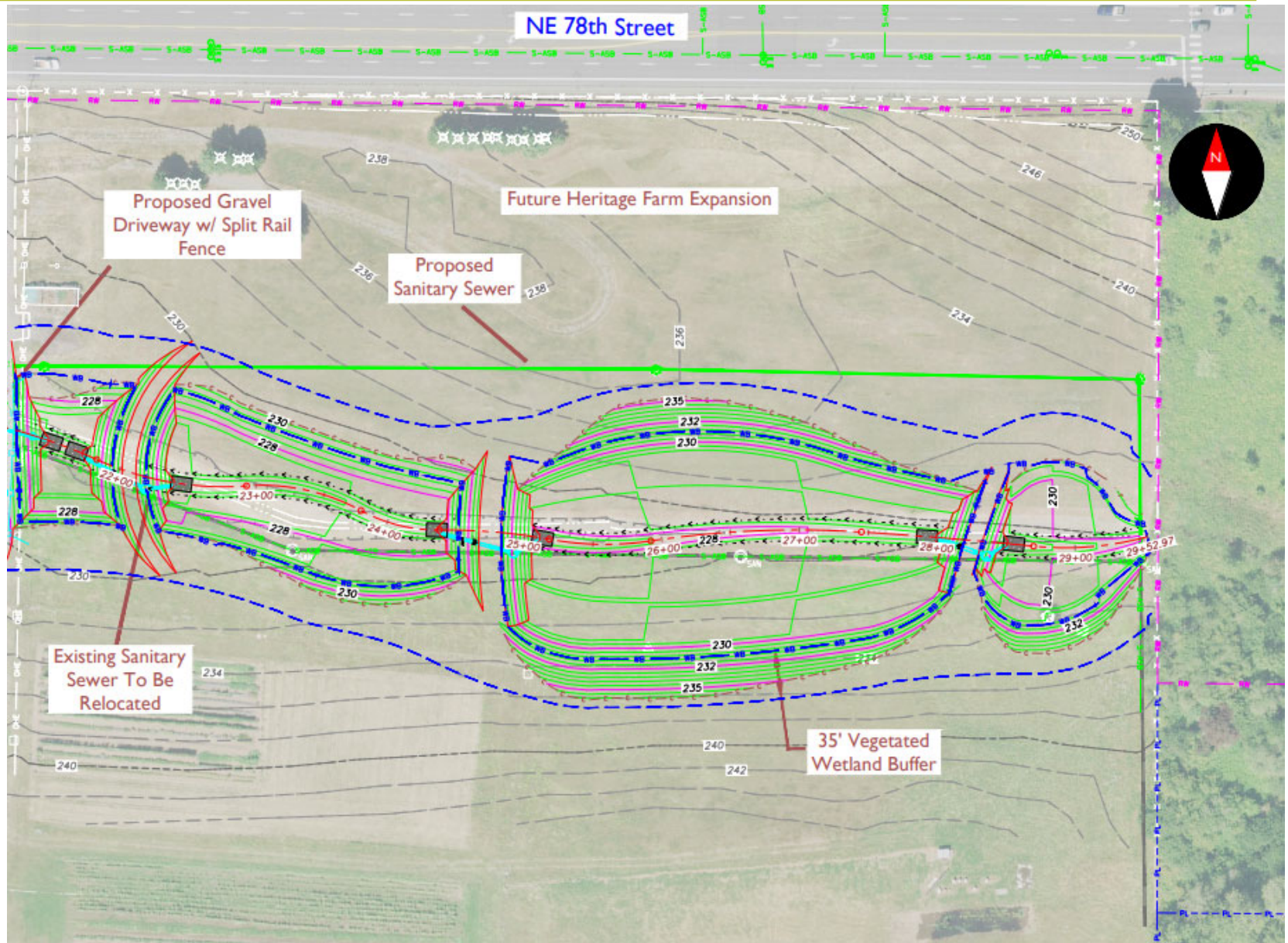
Project design



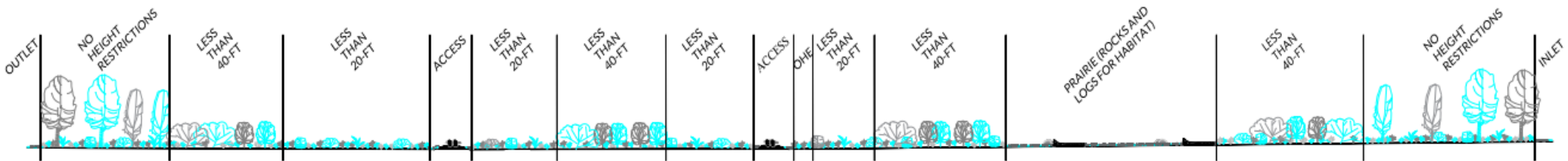
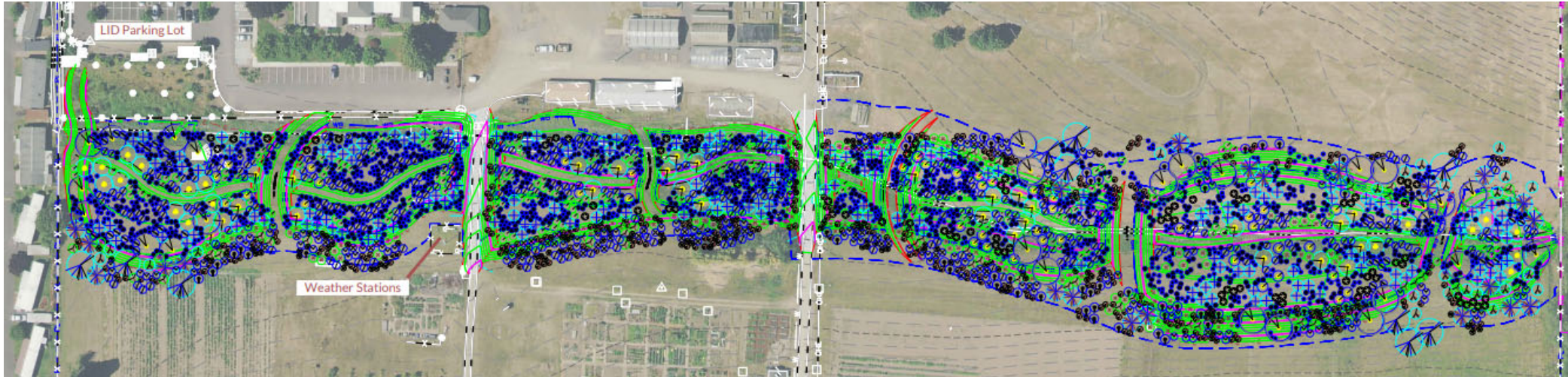
Project design – west half



Project design – east half



Planting plan



Proposed Planting Profile



Plant information

Proposed Buffer Species

Common Name	Supports Pollinators
Red Alder	
Serviceberry	Yes
Douglas Fir	
Western Red Cedar	
Beaked Hazelnut	Yes
Oceanspray	Yes
Tall Oregon Grape	Yes
Osoberry	Yes
Red Flowering Currant	Yes
Thimbleberry	Yes
Common Snowberry	Yes
Western Yarrow	Yes
California Brome	
Blue Wildrye	
Idaho Fescue	
Dwarf Checkerbloom	Yes

Proposed Wetland Species

Common Name	Supports Pollinators
Cascara	Yes
Black Cottonwood	
Pacific Willow	
Red Osier Dogwood	Yes
Black Twinberry	Yes
Pacific Ninebark	Yes
Nootka Rose	Yes
Salmonberry	Yes
Scouler Willow	Yes
Sitka Willow	
Douglas Spirea	Yes
Spike Bentgrass	
Western Columbine	Yes
Slough Grass	
Small Camas	Yes
Slough Sedge	
Giant Red Paintbrush	
Tufted Hairgrass	
Northwestern Mannagrass	
Pacific Rush	

Buffer Area Plants



Red Flowering Currant



Serviceberry



Dwarf Checkerbloom



Thimbleberry

Wetland Area Plants



Salmonberry



Nootka Rose



Small Camas



Red Osier Dogwood



Giant Red Paintbrush



Pacific Willow



Douglas Spirea



Slough Sedge



Example of a similar wetland planting project

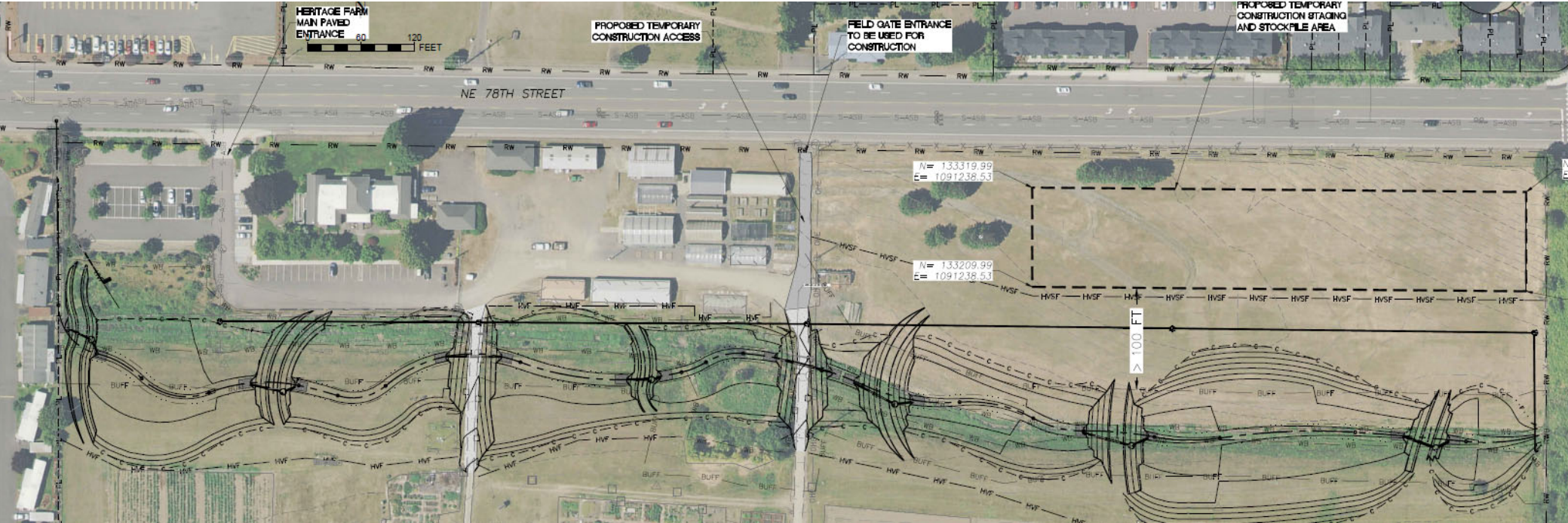


Photo taken right after planting in 2015

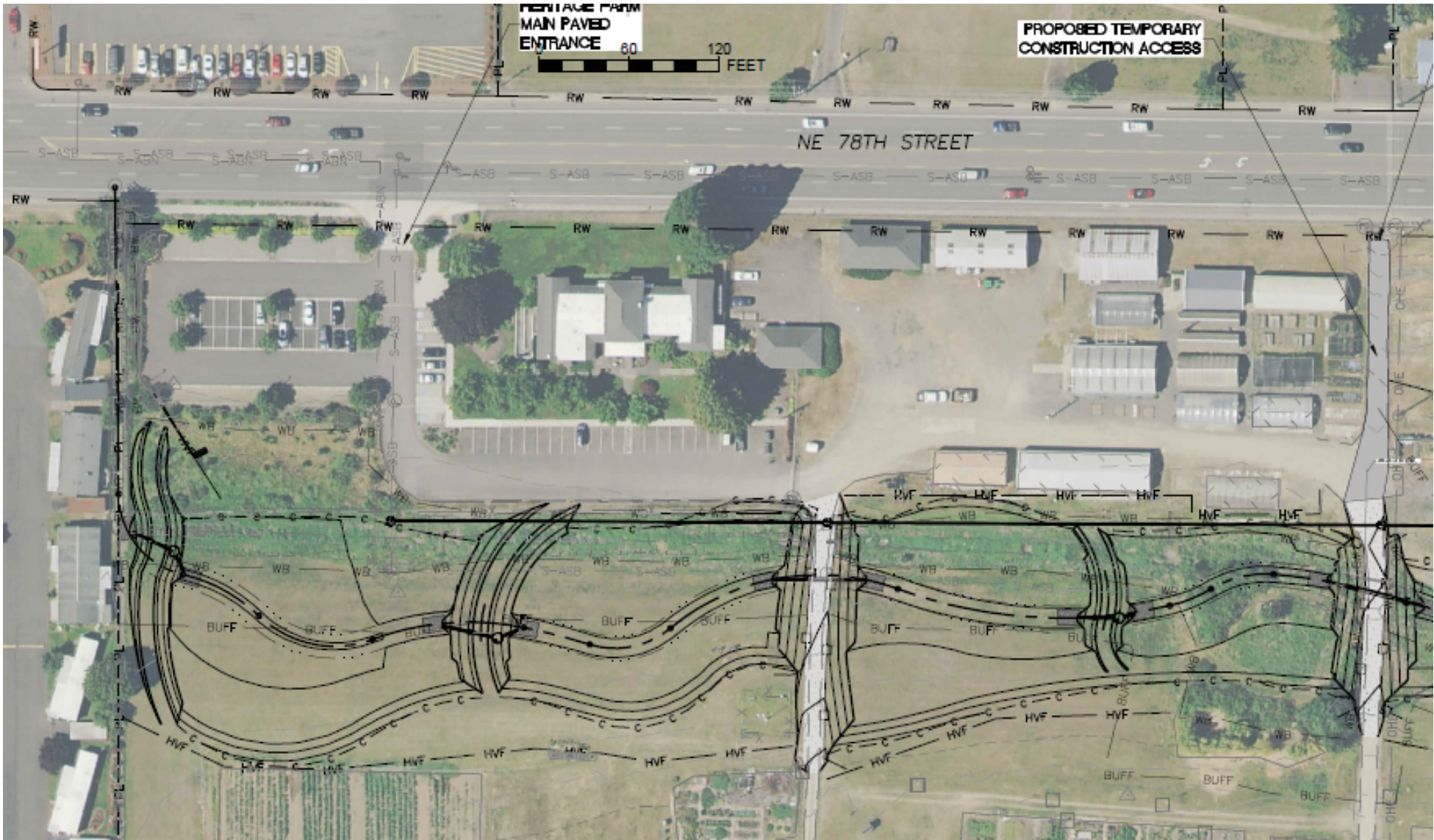


Same facility in 2019

Construction access & staging



Construction access & staging – west half



Construction access & staging – east half

