

MATCH LINE - SEE BELOW

**GRADING NOTES:**

1. SIDEWALK CROSS-SLOPES SHALL NORMALLY BE 2% MAX TOWARD ADJACENT PAVEMENT (AWAY FROM THE BUILDING) UNLESS OTHERWISE INDICATED ON THIS PLAN BY SPOT GRADES.
2. SEE SHEETS 09,10,11,12 FOR ADA RAMP & MISC. GRADING DETAILS.
3. SEE SHEETS 31 & 32 FOR LOT GRADING SCHEMATICS & CROSS SECTION.
4. CONTRACTOR IS RESPONSIBLE FOR MEETING SOIL QUALITY AND DEPTH (BMP T5.13) PER CLARK COUNTY STORMWATER MANUAL (CCSM) 2021 FOR ALL DISTURBED AREAS.
5. NO GRADING SHALL TAKE PLACE WITHIN 2 FEET OF ANY PROPERTY LINES.
6. CONTRACTOR SHALL FOLLOW ALL RECOMMENDATIONS PROVIDED IN THE GEOTECHNICAL ENGINEERING REPORT.
7. PAD GRADES SHOWN ARE TO STRUCTURAL FILL. CONTOURS SHOWN ARE TO FINISHED GRADE. SEE LOT GRADING CROSS SECTION - SHT 31 & 32.
8. WRITTEN APPROVAL FROM 5806 NE 51ST STREET TO GRADE ONTO PRIVATE PROPERTY ACQUIRED

**UNADJUSTED VOLUMES:**

APPROXIMATE \*UNADJUSTED CUT VOLUME = 69,996 CUBIC YARDS  
 APPROXIMATE \*UNADJUSTED FILL VOLUME = 57,043 CUBIC YARDS

\*CUT AND FILL VOLUMES DO NOT TAKE INTO ACCOUNT TRENCH SPOILS, OR SITE STRIPPINGS. THE ABOVE NUMBERS REPRESENT A VOLUME CALCULATION BETWEEN THE SITE'S EXISTING TOPOGRAPHY AND THE SITE'S DESIGN DATUM SURFACE.

**EROSION CONTROL SEQUENCING NOTES:**

1. PRE-CONSTRUCTION MEETING.
2. FLAG OR FENCE CLEARING LIMITS.
3. POST NOTICE OF CONSTRUCTION ACTIVITY SIGN WITH NAME AND PHONE NUMBER OF EROSION SEDIMENT CONTROL SUPERVISOR.
4. INSTALL CATCH BASIN PROTECTION IF REQUIRED.
5. GRADE AND INSTALL CONSTRUCTION ENTRANCE.
6. INSTALL PERIMETER PROTECTION (SILT FENCE, BRUSH BARRIER, ETC.)
7. CONSTRUCT SEDIMENT PONDS AND TRAPS.
8. GRADE AND STABILIZE CONSTRUCTION ROADS.
9. CONSTRUCT SURFACE WATER CONTROLS (INTERCEPTOR DIKES, PIPE SLOPE DRAINS, ETC.) SIMULTANEOUSLY WITH CLEARING AND GRADING FOR PROJECT DEVELOPMENT.
10. MAINTAIN EROSION CONTROL MEASURES IN ACCORDANCE WITH CLARK COUNTY STANDARDS AND MANUFACTURER'S RECOMMENDATIONS.
11. RELOCATED SURFACE WATER CONTROLS AND EROSION CONTROL MEASURES OR INSTALL NEW MEASURES SO THAT AS SITE CONDITIONS CHANGE THE EROSION AND SEDIMENT CONTROL IS ALWAYS IN ACCORDANCE WITH THE CLARK COUNTY EROSION AND SEDIMENT CONTROL STANDARDS.
12. COVER ALL AREAS THAT WILL BE UNWORKED FOR MORE THAN SEVEN DAYS DURING THE DRY SEASON OR TWO DAYS DURING THE WET SEASON WITH STRAW, WOOD FIBER MULCH, COMPOST, PLASTIC SHEETS, OR EQUIVALENT.
13. STABILIZE ALL AREAS THAT REACH FINAL GRADE WITHIN SEVEN DAYS.
14. SEED OR SOD ANY AREAS TO REMAIN UNWORKED FOR MORE THAN 30 DAYS.
15. UPON COMPLETION OF PROJECT, ALL DISTURBED AREAS MUST BE STABILIZED AND BEST MANAGEMENT PRACTICES REMOVED IF APPROPRIATE.

**NOTE:**

BMP'S ARE NOT LIMITED TO THOSE CALLED OUT IN THE PLAN. CONTRACTOR SHALL USE THE FOLLOWING BMP'S WHEN APPROPRIATE TO ENSURE THAT NO SEDIMENT LATENT WATER LEAVES THE SITE. CONSULT THE SWPPP FOR MORE INFORMATION.

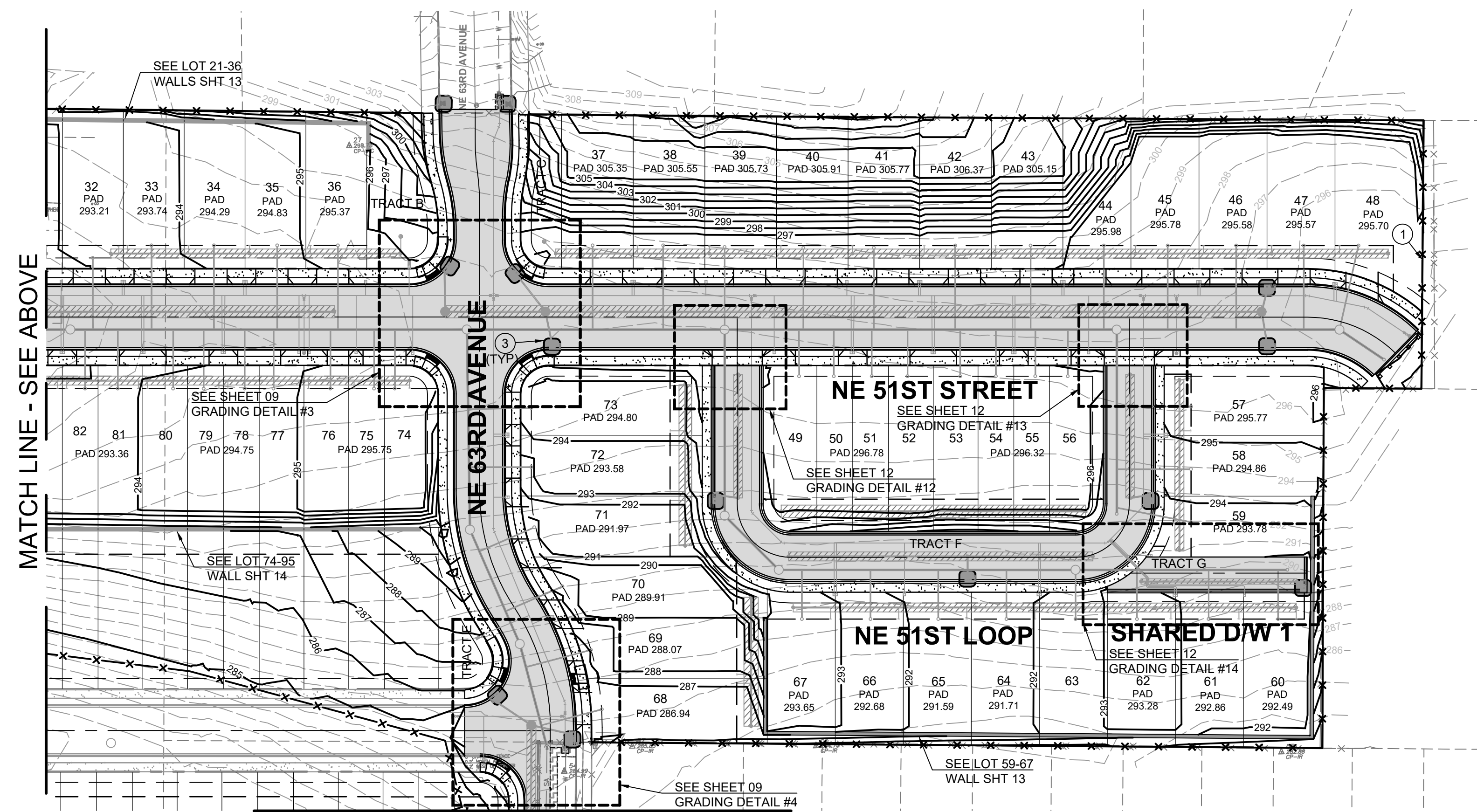
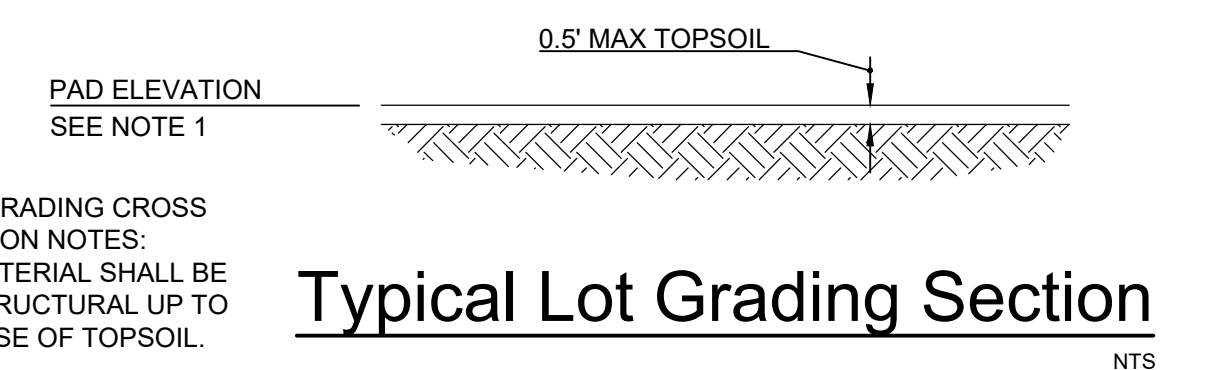
- STABILIZED CONSTRUCTION ENTRANCE (BMP C105)
- SILT FENCE (BMP C233)
- STORM DRAIN INLET PROTECTION (BMP C220)
- TEMPORARY AND PERMANENT SEEDING (BMP C120)
- MULCHING (BMP C121)
- NETS AND BLANKETS (BMP C122)
- PLASTIC COVERING (BMP C123)
- TOPSOILING (BMP C125)
- TEMPORARY SEDIMENT TRAP (BMP C240)
- SURFACE ROUGHENING (BMP C130)
- DUST CONTROL (BMP C140)
- EARLY APPLICATION OF GRAVEL BASE ON AREAS TO BE PAVED
- TEMPORARY AND PERMANENT SEEDING (BMP C120)
- SURFACE ROUGHENING (BMP C130))
- OUTLET PROTECTION (BMP C209)
- INTERCEPTOR DIKE AND SWALE (BMP C200)
- STRAW WATTLES (BMP C235)
- CHECK DAMS (BMP C207)

**SITE KEY NOTES:**

- ① SILT FENCE - (PER CC STD DTL E-4 - SHT 33)
- ② STABILIZED CONSTRUCTION ENTRANCE - (PER CC STD DTL E-1 - SHT 33)
- ③ INLET PROTECTION - (PER CC STD DTL E-3C OR E-3D - SHT 33)

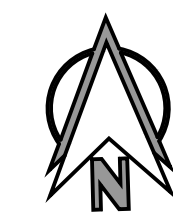
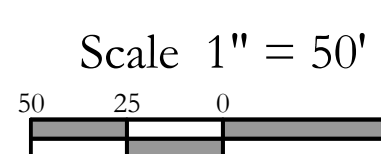
LOT GRADING CROSS SECTION NOTES:  
 1) MATERIAL SHALL BE STRUCTURAL UP TO BASE OF TOPSOIL.

**Typical Lot Grading Section**



MATCH LINE - SEE ABOVE

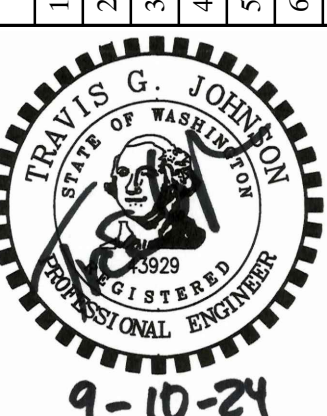
MATCH LINE - SEE SHEET 8



Legend	
Proposed Asphalt	
Proposed Concrete	
Future Concrete	
Proposed Infiltration Trench	
Asphalt Grind & Overlay	
Proposed ADA Ramps	



Revisions	
No.	Description
1	
2	
3	
4	
5	
6	



Project No. 3537  
 SCALE: H: 1"=50'  
 V: N/A  
 DESIGNED BY: MAG  
 DRAFTED BY: MAG  
 REVIEWED BY: TGJ

07  
 38

Grading and Erosion Control Plan For:

**Kunze Farms PUD -Phase 1**

A Subdivision Located In Clark County

Engineering - Surveying - Planning 604 W. Evergreen Blvd., Vancouver, WA 98660 PH (360) 944-6519

PLS ENGINEERING

Fax (360) 944-6539