

2025 Comprehensive Plan Update

Background and Project Overview

Harrison Husting, Planner II

2/27/2024



Presentation Overview

- **2024 Work Plan**

- *Stay informed and receive updates about the Comprehensive Growth Management Plan update, specifically the approaches for Greenhouse Gas (GHG) and Vehicle Miles Travelled (VMT) reduction as part of the new Climate Change element.*
- *Review recommended policies in the Comprehensive Growth Management Plan and provided feedback where applicable.*

- **Purpose**

- Provide a project background and ensure that all committee members are equipped with enough foundational knowledge to provide informed recommendations and feedback throughout the planning process.

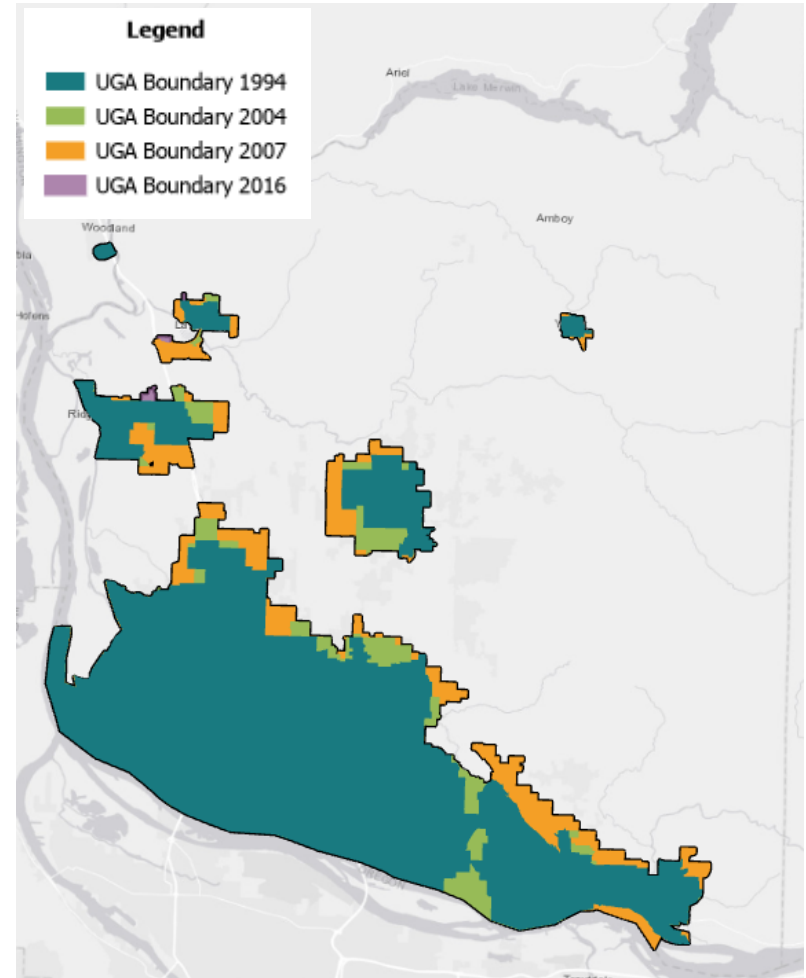


Clark County and GMA



History of Planning in Clark County

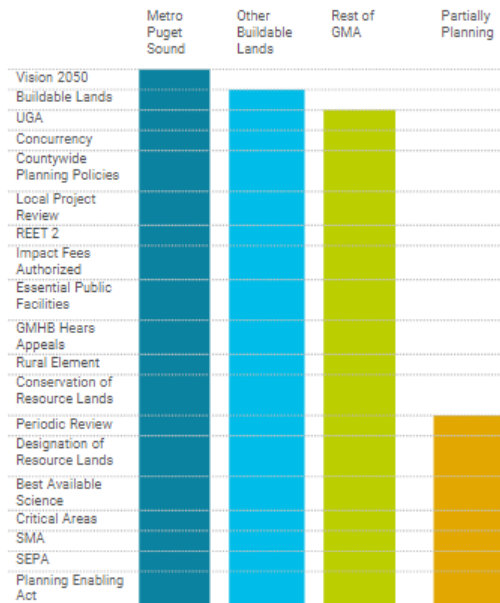
- **1979 Clark County's first Comprehensive Plan**
- **1994 First Comprehensive Growth Management Plan**
- **2004, 2007, and 2016 Update**
 - Annual population growth rates of 1.6%, 2.0 – 2.2%, and 1.26% were used, respectively.
- **Next Update is due by June 30, 2025**



Growth Management Act

- **Growth Management Act (GMA) of 1990 (RCW 36.70A)**

- “The legislature finds that uncoordinated and unplanned growth, together with a lack of common goals expressing the public’s interest in the conservation and wise use of our lands, pose a threat to the environment, sustainable economic development, and the health, safety, and high quality of life enjoyed by the residents of this state.” (RCW 36.70A.010)



Goals of the Growth Management Act

- 1. Urban Growth**
- 2. Reduce Sprawl**
- 3. Transportation**
- 4. Housing**
- 5. Economic Development**
- 6. Property Rights**
- 7. Permits**
- 8. Natural Resource Industries**
- 9. Open Space and Recreation**
- 10. Environment**
- 11. Citizen Participation and Coordination**
- 12. Public Facilities and Services**
- 13. Historic Preservation**
- 14. Climate Change and Resiliency**
- 15. Shoreline Management**



Comp Plan Requirements



Comprehensive Plan Requirements

Comprehensive Plan

- Goals and Policies
- Inventories
- Analysis and Conclusions
- Strategies and Commitments

Mandatory Elements

- Land Use
- Housing
- Capital Facilities
- Utilities
- Rural
- **Transportation**
- **NEW** Climate Change and Resiliency



20 Comprehensive Growth
YEAR Management Plan
2015-2035



Changes to Transportation Element

	Previous Requirements (2022)	New Requirements (2024)
A	The transportation element must identify the transportation facilities, and public facilities and services needed to serve the UGA and the funding to provide the transportation facilities and public facilities and services. RCW 36.70A.130 amended in 2022 (see SB 5593)	No changes
B	An inventory of air, water, and ground transportation facilities and services, including transit alignments, state-owned transportation facilities, and general aviation airports.	An inventory of air, water, and ground transportation facilities and services, including transit alignments, state-owned transportation facilities, and general aviation airports. RCW 36.70A.070(6)(a)(iii)(A) amended in 2023 and WAC 365-196-430(2)(c).
C	Adopted levels of service (LOS) standards for all arterials, transit routes and highways.	Adopted multimodal levels of service (LOS) standards for all locally-owned arterials, transit routes and state highways. RCW 36.70A.070(6)(a)(iii)(B) and (C), WAC 365-196-430
D	Identification of specific actions to bring locally-owned transportation facilities and services to established LOS.	Identification of specific actions to bring transportation facilities and services to established multimodal LOS. RCW 36.70A.070(6)(a)(iii)(D) amended in 2023, WAC 365-196-430
E	A forecast of traffic for at least 10 years including land use assumptions used in estimating travel.	A forecast of multimodal transportation for a minimum of 10 years including land use assumptions used in estimating travel. RCW 36.70A.070(6)(a)(i), RCW 36.70A.070 (6)(a)(iii)(E) amended in 2023, WAC 365-196-430(2)(f)



Changes to Transportation Element

	Previous Requirements (2022)	New Requirements (2024)
F	A projection of state and local system needs to meet current and future demand	A projection of state and local system needs to equitably meet current and future demand and equitably implement the multimodal network. RCW 36.70A.070(6)(a)(iii)(F) amended in 2023, WAC 365-196-430(1)(c)(vi) and RCW 47.06
G	N/A	A transition plan for transportation as required in <u>Title II of ADA</u> . Perform self-evaluations of current facilities and develop a program access plan to address deficiencies and achieve the identification of physical obstacles, establish methods, perform modifications and identify leadership roles. RCW 36.70A.070(6)(a)(iii)(G) new in 2023.
H	A pedestrian and bicycle component to include collaborative efforts to identify and designate planned improvements for pedestrian and bicycle facilities and corridors that address and encourage enhanced community access and promote healthy lifestyles.	An active transportation component to include collaborative efforts to identify and designate planned improvements for active transportation facilities and corridors that address and encourage enhanced community access and promote healthy lifestyles. RCW 36.70A.070(6)(a)(vii) amended in 2023, WAC 365-196-430(2)(j)
I	A description of any existing and planned transportation demand management (TDM) strategies, such as HOV lanes or subsidy programs, parking policies, etc. RCW 36.70A.070(6)(a)(vi) and WAC 365-196-430(2)(i)(i)	No changes



Changes to Transportation Element

	Previous Requirements (2022)	New Requirements (2024)
J	An analysis of future funding capability to judge needs against probable funding resources. RCW 36.70A.070(6)(a)(iv)(A), WAC 365.196-430(2)(k)(iv)	No changes
K	A multi-year financing plan based on needs identified in the comprehensive plan, the appropriate parts of which serve as the basis for the 6-year street, road or transit program.	No changes
L	If probable funding falls short of meeting identified needs: a discussion of how additional funds will be raised, or how land use assumptions will be reassessed to ensure that LOS standards will be met.	If probable funding falls short of meeting identified needs of the transportation system, including state transportation facilities , a discussion of how additional funds will be raised, or how land use assumptions will be reassessed to ensure that LOS standards will be met. RCW 36.70A.070(6)(a)(iv)(C) amended in 2023, WAC 365-196-430(2)(l)(iii)
M	A description of intergovernmental coordination efforts, including an assessment of the impacts of the transportation plan and land use assumptions on the transportation systems of adjacent jurisdictions and how it is consistent with the regional transportation plan. RCW 36.70A.070(6) (a)(v); WAC 365-196-430(1)(e) and 430(2)(a)(iii)	No changes



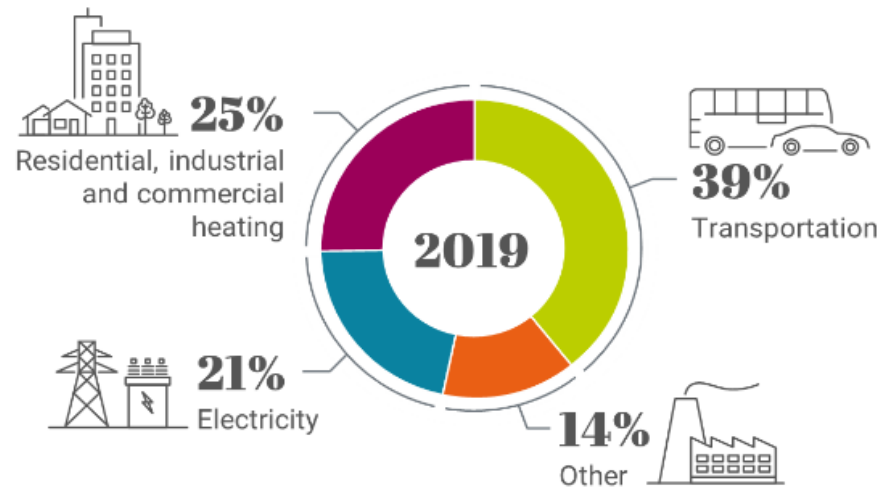
Climate Element and Transportation

- **Climate Element (HB1181)**

- Resiliency Sub-element
- Greenhouse Gas (GHG) Reduction Sub-element
 - Inventory of GHG emission sources
 - Vehicle Miles Travel (VMT) baseline and reduction strategies

- **Climate Community Advisory Group (CAG)**

- Develop goal and policy recommendations to meet the requirements of new state climate legislation



Washington greenhouse gases
Department of Ecology-Statewide Emission Inventory 2019



Transportation System Plan

- **Transportation System Plan (TSP) will serve as the Transportation Element**

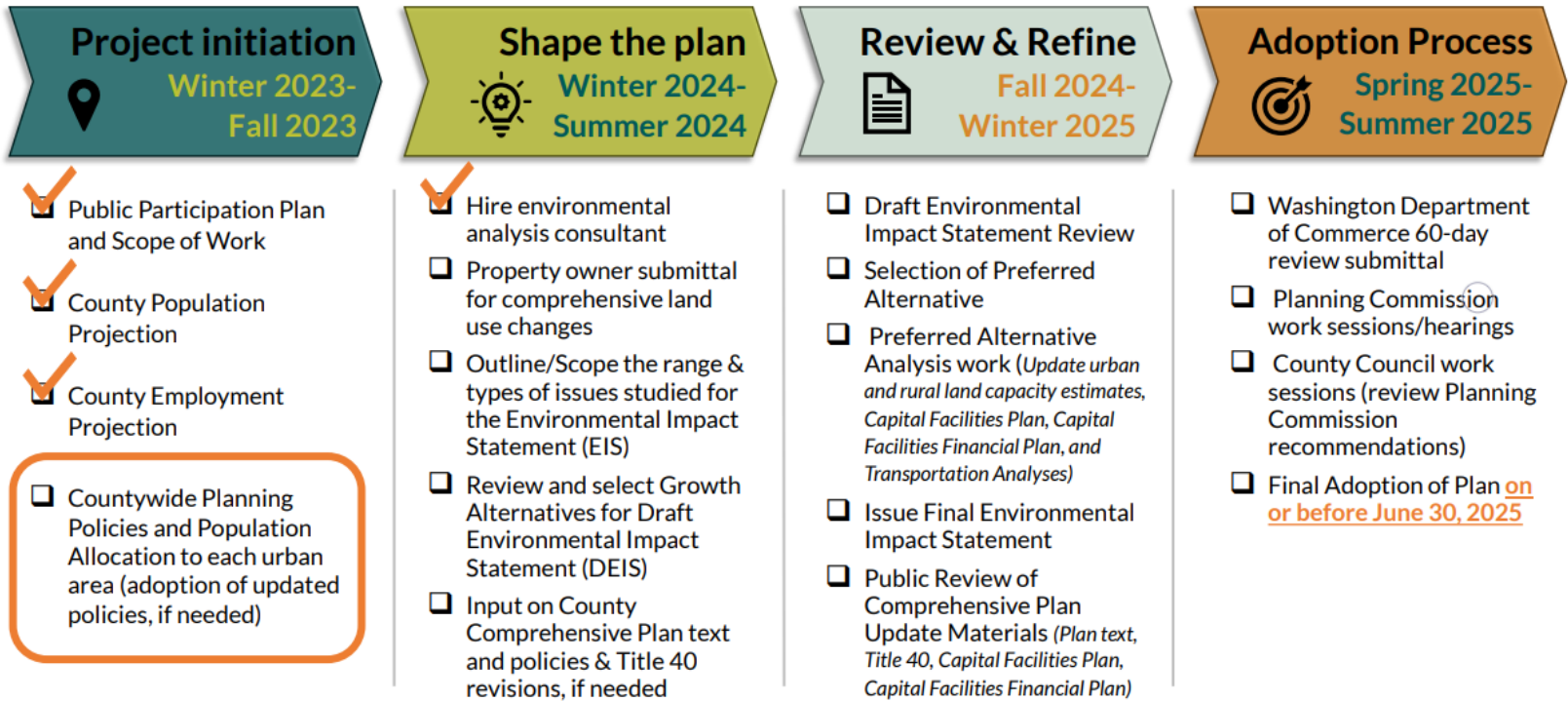
- Began work in 2020
- Council Work Session to continue work as part of Comp Plan Update in August 2023
- Draft for public review in late Spring/early Summer
- Will be updated with additional Comp Plan requirements by adoption in 2025



Project Timeline and Upcoming Decisions



Comp Plan Update Timeline



Upcoming Dates

- Population, Housing, and Employment Allocation
 - **Planning Commission – Feb 29, 2024**
 - **Council Hearing – March 5, 2024**
- Community Advisory Group – Climate Element
 - **First meeting on Feb 21, 2024**
 - **Reoccurring monthly meetings TBD**
- Public Review of Growth Alternatives to be studied in DEIS
 - **July/August 2024**



Thank you!

Comments and questions

Clark County Public Service Center

1300 Franklin Street • PO Box 5000

Vancouver, WA 98666-5000

