

Revenue forecast delays construction

Clark County recently received updated financial projections for the Greater Clark Parks District and has determined that construction will not start on Sorenson Neighborhood Park in 2012, as originally planned.

The ongoing economic downturn is projected to cause a significant reduction in the amount of property taxes collected by the Greater Clark Parks District for maintenance and operations of its parks. As a result, the county will slow down its park development program. It is not financially prudent to build all the remaining parks when projections indicate the county will have difficulties maintaining its existing parks.

This park project will be put on hold after the concept planning process is completed this spring. Design, permitting and construction will move ahead when funding is available.

Neighbors will be notified when work resumes, but it may not be for a year or possibly longer. The county will carefully monitor revenues and expenditures, both projections and actual numbers, and make adjustments as needed.

Please visit www.clarkparks.org to learn more, or call (360) 397-6118 ext. 4949.

Help name your park

Earlier this year, neighbors were asked to suggest an official name for the park, which has been known by a placeholder name since it was purchased. Now it's time to choose your favorite! The options are:

- Basin Hill Neighborhood Park
- The Hill Neighborhood Park
- Plum Tree Neighborhood Park
- Rocky Hill Neighborhood Park
- Rocky Meadows Neighborhood Park
- Sorenson Neighborhood Park, after the family who owned the farm that used to be on this site

A few name suggestions were not accepted after consulting Vancouver-Clark Parks and Recreation's park naming policy. Parks can only be named for an individual who is deceased, so a suggestion to name the park after former state legislator and county commissioner Betty Sue Morris was rejected. In addition, the names "Water Tower Hill Park" and "Water Tower Park" were rejected because they were too similar to Waterworks Park in Vancouver and could cause confusion.

Tell us which name you prefer by either filling out the "Help Name Your Park" survey on the project Web page (www.clarkparks.org/projects/sorenson.htm), or by calling (360) 397-6118 ext. 4949. The deadline to make your selection is May 6, 2011.

Sorenson Neighborhood Park Update

April 2011



Public input requested on updated park concept plan

Clark County Public Works and Vancouver-Clark Parks and Recreation have drafted an updated draft concept plan for Sorenson Neighborhood Park. This plan was developed based on the project budget, site conditions and public input received at a public meeting and on the Web in March 2011.

This 4.9-acre park is located on NW 26th Avenue at NW 109th Street in Felida. The updated draft concept plan for this park (see inside page) includes the following features:

- Paved, ADA accessible main loop trail and switchback trail up the hill
- Irrigated, level open lawn area
- Playground with equipment for multiple ages
- Sports court with a basketball hoop
- Three interactive "basins" illustrating the progression of a boulder as breaks down and is transformed into sand over time
- Sledding hill
- Picnic tables
- Benches
- New eastern entrance from NW 109th Street
- Sidewalk on the east side of NW 26th Avenue in front of the park
- Bike rack, garbage cans and signage
- Additional landscaping and interpretive rain gardens for stormwater

Please see the back page for an update about the construction schedule for this park.

What's next?

Please provide your comments about the updated draft concept plan to Project Manager Troy Pierce by mail, e-mail or telephone **no later than May 6, 2011** (see project contact information below).

Project staff will present the preferred draft concept plan for the park to the **Parks and Recreation Advisory Commission** for action at its next monthly meeting:

Friday, May 20, 2011 at noon
Clark County Public Service Center
6th floor training room (# 679)
1300 Franklin St.
Vancouver, WA

Neighbors are welcome to attend this meeting and provide comments to the Commission about this project.

Project contact information

Send input about the proposed concept plan to:

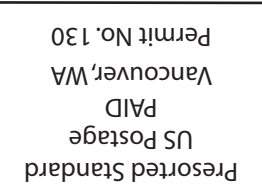
Troy Pierce, Project Manager
Clark County Public Works
PO Box 9810
Vancouver, WA 98666-9810
Phone: (360) 397-6118 ext. 4403
E-mail: Troy.Pierce@clark.wa.gov

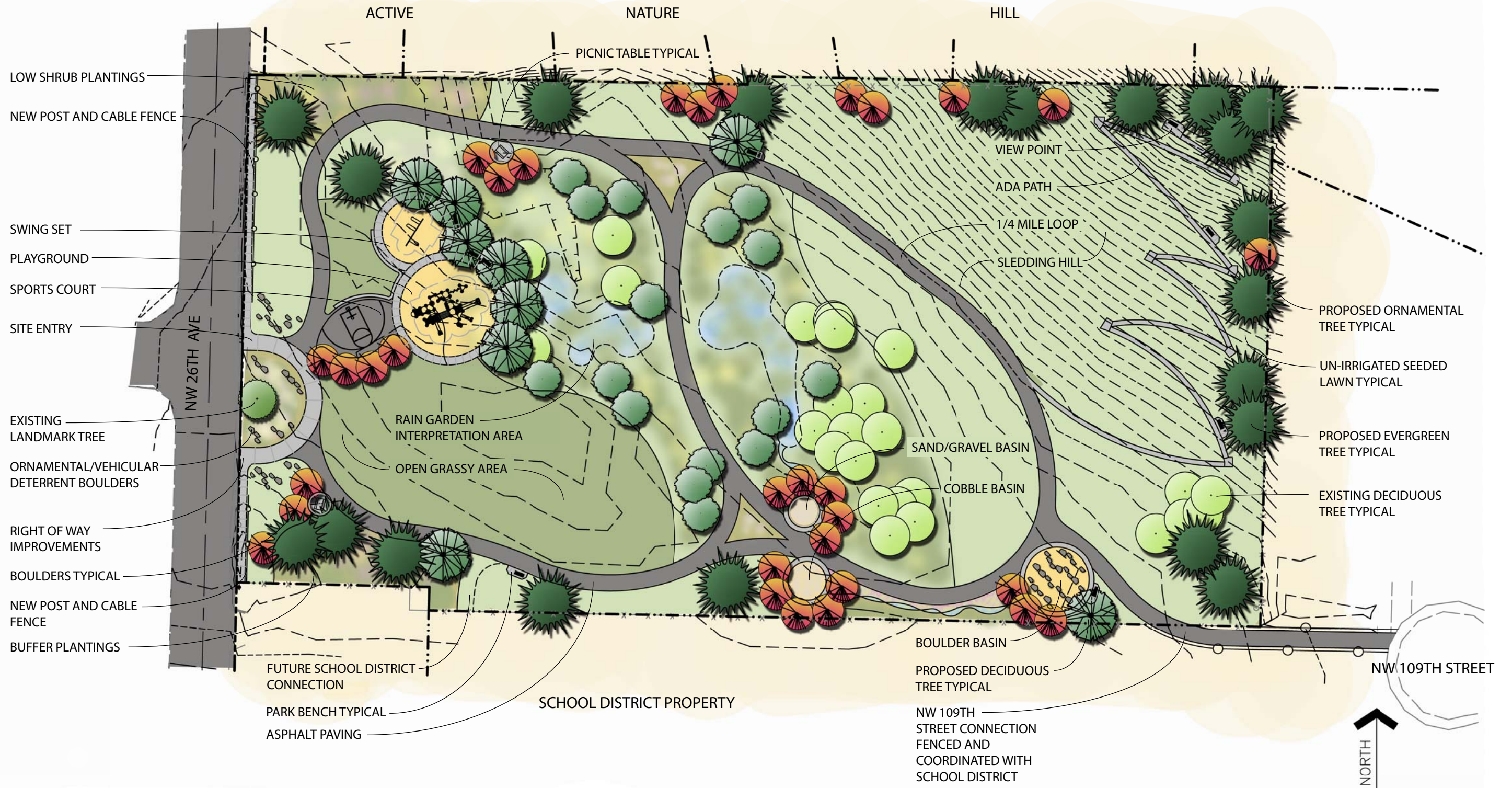
Visit us on the Web:
www.clarkparks.org/projects/sorenson.htm

Public Works Department
PO Box 9810
Vancouver, WA 98666



VANCOUVER-CLARK
PARKS & Recreation





Sorenson Neighborhood Park



VANCOUVER-CLARK
PARKS & Recreation

APRIL 2011



CONCEPTUAL
DEVELOPMENT PLAN